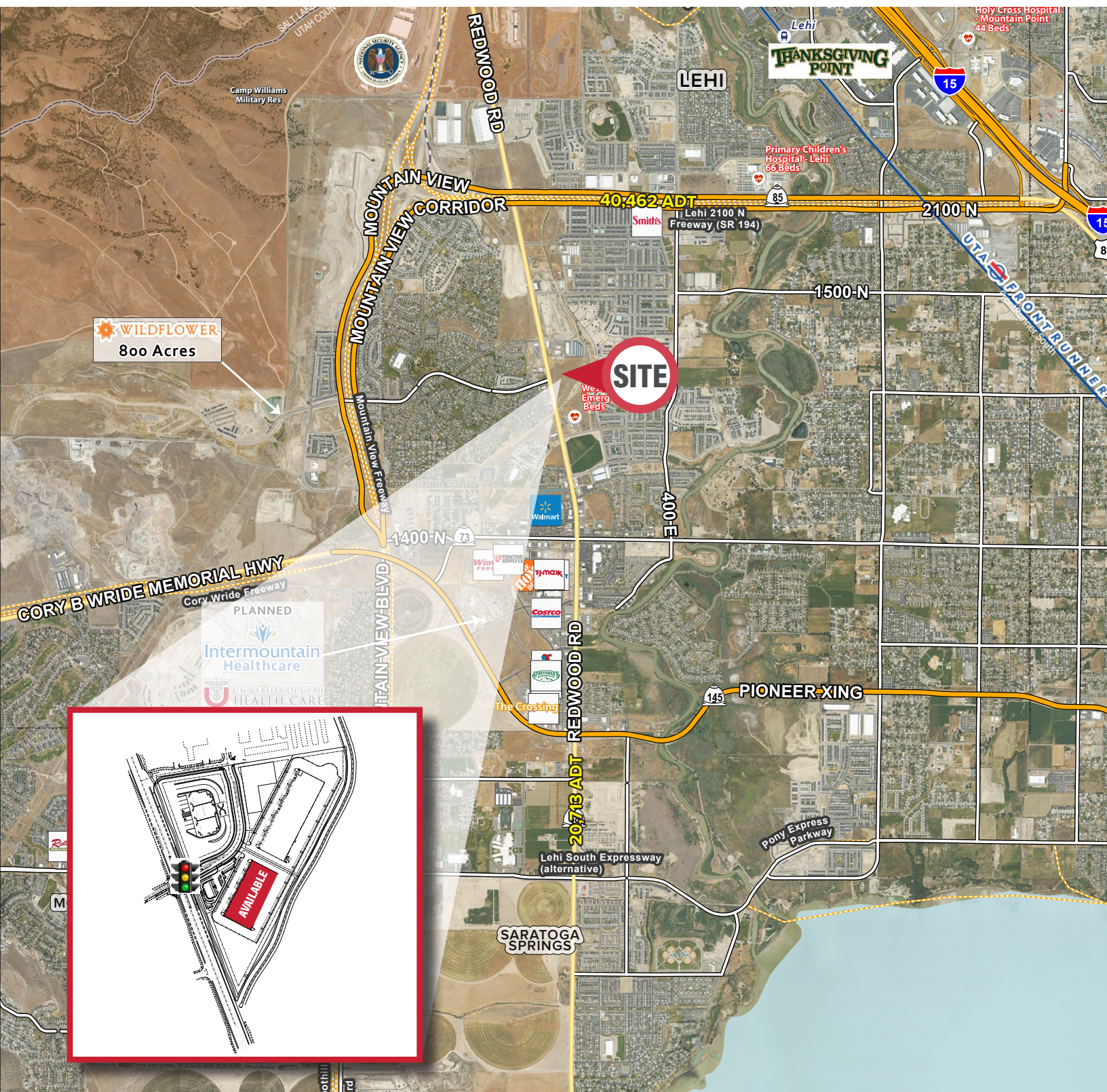


WESTPORT INDUSTRIAL DEVELOPMENT

2148 North Redwood Road | Saratoga Springs, UT 84045



WESTPORT INDUSTRIAL DEVELOPMENT

2148 North Redwood Road | Saratoga Springs, UT 84045



FOR ILLUSTRATIVE PURPOSES
ONLY - DESIGN NOT FINAL

UNDER CONSTRUCTION

FOR LEASE

Contact Agent for Pricing

Property Highlights

- Total Building SF: 50,316 SF
- Unit Sizes: 2,325 SF, 3,850 SF, 7,700 SF
- Fourteen (14) Total Units
- Clear Height: 24'
- Loading: One (1) 12'x14' Grade Level Door
- One (1) Shared Dock Well
- Heating: Gas Forced Air
- Building Depth: 152'6"
- Zoning: OW - Office Warehouse
- Access: Direct Access off of Redwood Road
- Location: Located in Saratoga Springs, One of Utah's fastest growing cities
- Deliverable: Summer 2026

Contact

SKYLER PETERSON, SIOR
Executive Vice President
m 801.656.7354
speterson@legendcommercial.com

TRE BOURDEAUX, SIOR
Vice President
m 801.824.0397
tbourdeaux@legendcommercial.com

PARKER TAGGART
Senior Associate
m 801.928.1815
ptaggart@legendcommercial.com



801.930.6750 | www.legendcommercial.com
2180 S 1300 E, Suite 240 | Salt Lake City, UT 84106

Contact

SKYLER PETERSON, SIOR
Executive Vice President
m 801.656.7354
speterson@legendcommercial.com

TRE BOURDEAUX, SIOR
Vice President
m 801.824.0397
tbourdeaux@legendcommercial.com

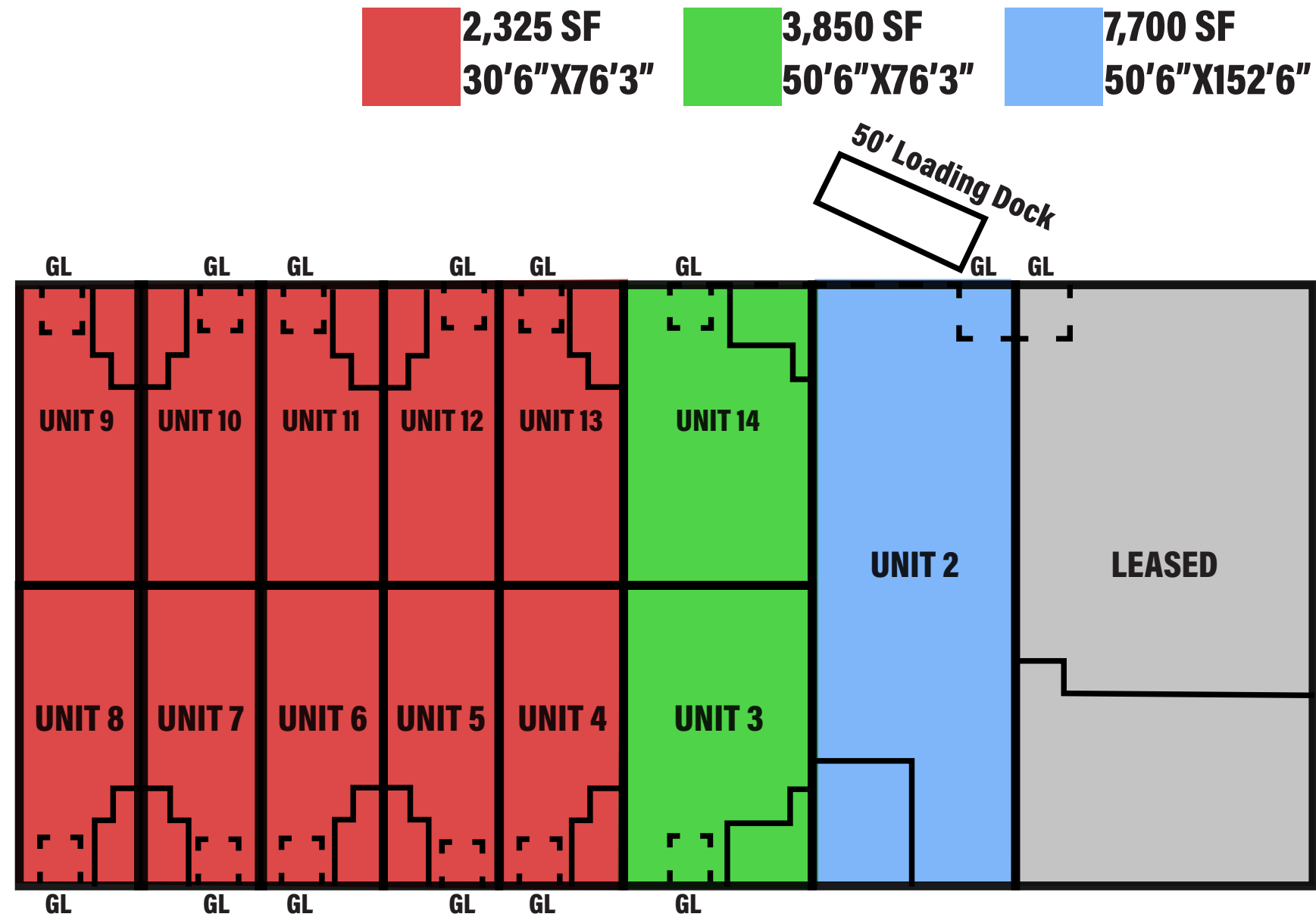
PARKER TAGGART
Senior Associate
m 801.928.1815
ptaggart@legendcommercial.com



801.930.6750 | www.legendcommercial.com
2180 S 1300 E, Suite 240 | Salt Lake City, UT 84106

2148 North Redwood Road | Saratoga Springs, UT 84045

BUILDING 1 SITE PLAN



Unit #	Total SF	Office SF
1	11,666 SF	3,562 SF
2	7,700 SF	745 SF
3	3,850 SF	395 SF
4	2,325 SF	225 SF
5	2,325 SF	225 SF
6	2,325 SF	225 SF
7	2,325 SF	225 SF
8	2,325 SF	225 SF
9	2,325 SF	225 SF
10	2,325 SF	225 SF
11	2,325 SF	225 SF
12	2,325 SF	225 SF
13	2,325 SF	225 SF
14	3,850 SF	395 SF

Contact

SKYLER PETERSON, SIOR

Executive Vice President

m 801.656.7354

speterson@legendcommercial.com

TRE BOURDEAUX, SIOR

Vice President

m 801.824.0397

tbourdeaux@legendcommercial.com

PARKER TAGGART

Senior Associate

m 801.928.1815

ptaggart@legendcommercial.com



Contact

SKYLER PETERSON, SIOR

Executive Vice President

m 801.656.7354

speterson@legendcommercial.com

TRE BOURDEAUX, SIOR

Vice President

m 801.824.0397

tbourdeaux@legendcommercial.com

PARKER TAGGART

Senior Associate

m 801.928.1815

ptaggart@legendcommercial.com

