



231 W Lake Lansing Rd

East Lansing, Michigan 48823

Property Highlights

- Suite 500C - 1,900 SF available
- Located in the well known Asher Court Office Park
- Great location on Lake Lansing Road, close to MSU
- Easy access to I-127
- Minutes to Eastwood Towne Center

Offering Summary

Lease Rate:	\$15.50 SF/yr (MG)
Building Size:	10,533 SF
Available SF:	1,900 SF

For More Information

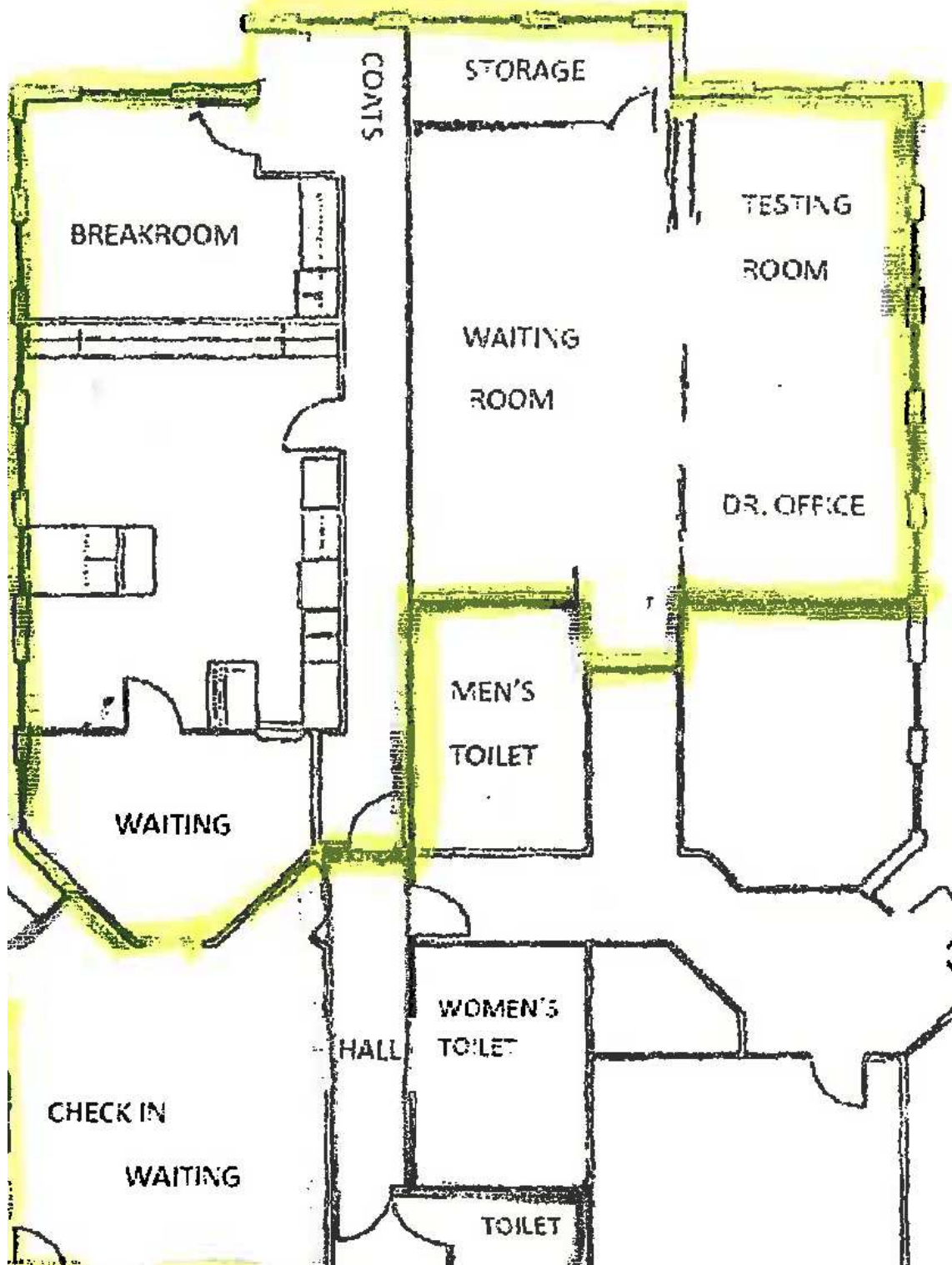


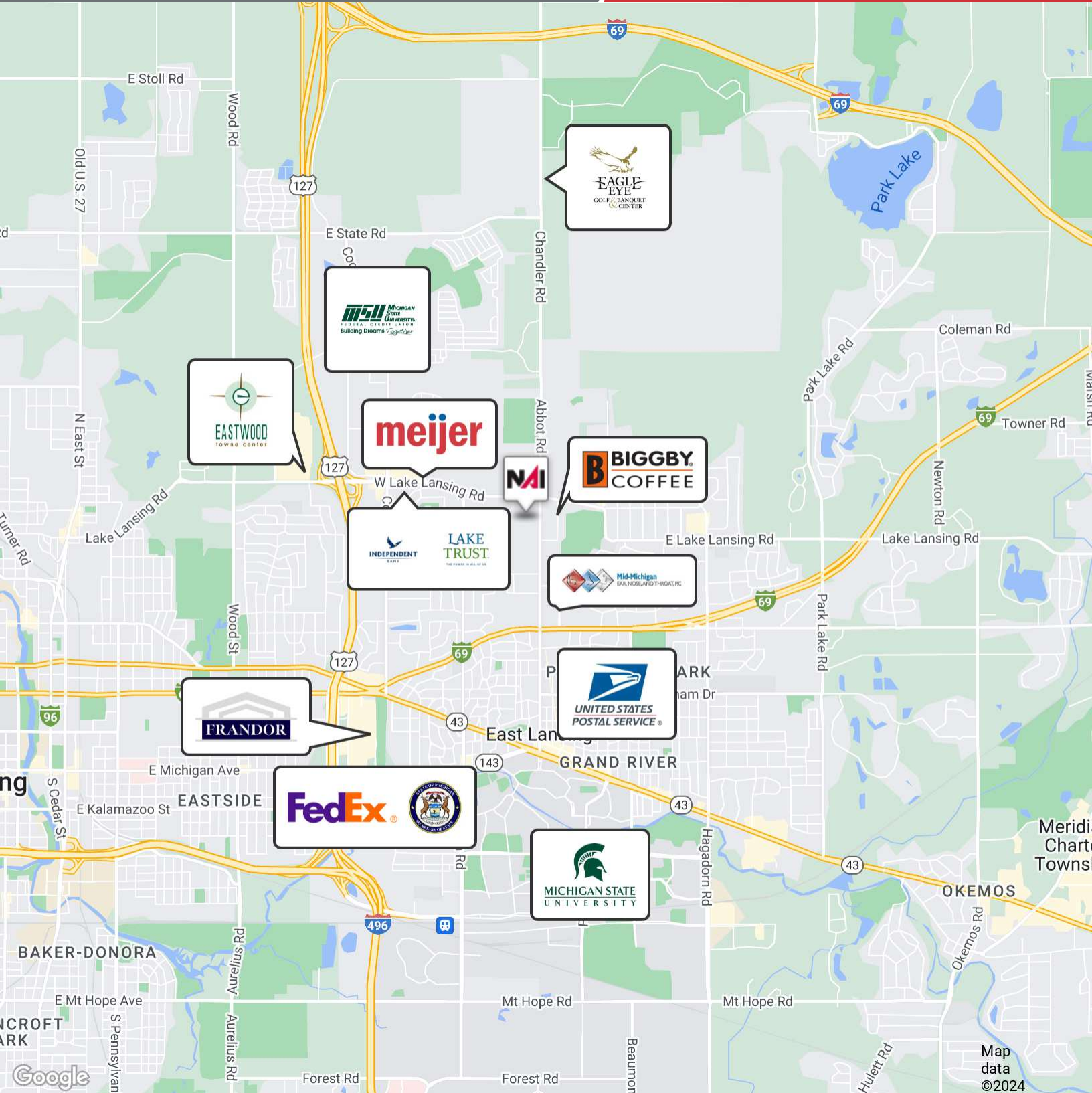
Steve Slater

Associate Broker

O: 517 487 9222 | C: 517 749 7914

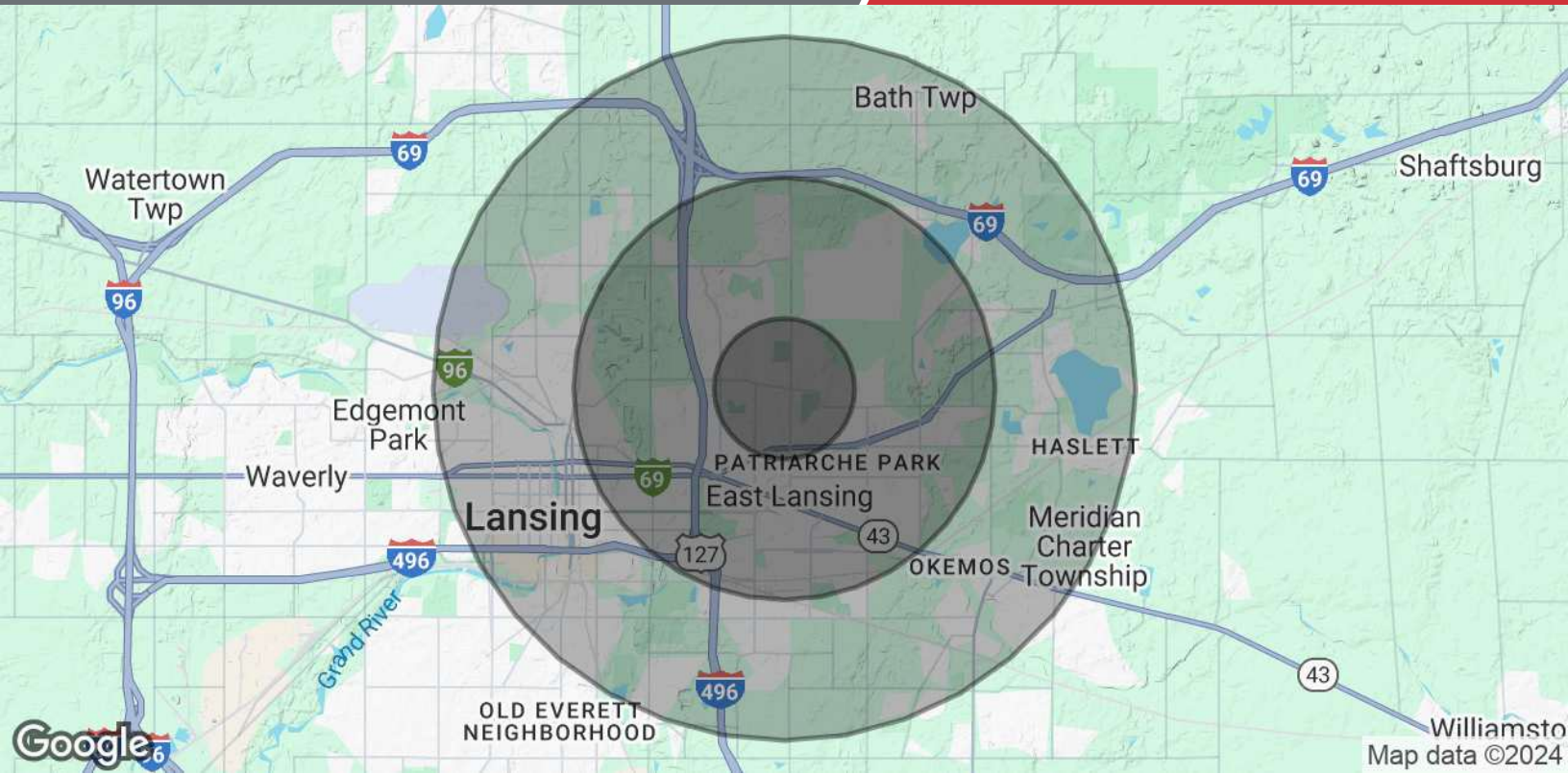
steveslater@naimidmichigan.com





NO WARRANTY OR REPRESENTATION, EXPRESS OR IMPLIED, IS MADE AS TO THE ACCURACY OF THE INFORMATION CONTAINED HEREIN, AND THE SAME IS SUBMITTED SUBJECT TO ERRORS, OMISSIONS, CHANGE OF PRICE, RENTAL OR OTHER CONDITIONS, PRIOR SALE, LEASE OR FINANCING, OR WITHDRAWAL WITHOUT NOTICE, AND OF ANY SPECIAL LISTING CONDITIONS IMPOSED BY OUR PRINCIPALS NO WARRANTIES OR REPRESENTATIONS ARE MADE AS TO THE CONDITION OF THE PROPERTY OR ANY HAZARDS CONTAINED THEREIN ARE INTENDED TO BE IMPLIED

2149 Jolly Road, Suite 200
Okemos, MI 48864
517 487 9222 tel
naimidmichigan.com



Population	1 Mile	3 Miles	5 Miles
Total Population	8,914	84,481	145,686
Average Age	31.8	27.1	29.7
Average Age (Male)	33.7	27.5	29.6
Average Age (Female)	30.2	27.1	30.2
Households & Income	1 Mile	3 Miles	5 Miles
Total Households	4,116	27,051	54,211
# of Persons per HH	2.2	3.1	2.7
Average HH Income	\$63,752	\$57,864	\$56,197
Average House Value	\$191,189	\$181,341	\$157,370

* Demographic data derived from 2020 ACS - US Census