

FLEX OFFICE/WAREHOUSE FOR LEASE

2314 NW Savier Street

PORTLAND, OR 97210



Slabtown office/warehouse with off-street parking available for lease

CONTACT

Justin Darling
Sara Daley

c 503 457 2990 / o 503 224 6791 / jdarling@naielliott.com
c 503 457 2990 / o 503 224 6791 / sdaley@naielliott.com

NAI Elliott

The information herein has been obtained from sources we deem reliable. We do not, however, guarantee its accuracy. All information should be verified prior to purchase/leasing. View the Real Estate Agency Pamphlet by visiting our website, www.naielliott.com/agencydisclosures



Class A office space with adjacent warehouse located on NW 23rd

AVAILABLE

- 4,837 SF (warehouse - 1,791 SF / office - 3,046 SF)

HIGHLIGHTS

- Flexible floor plan
- Multiple privates, open work spaces
- Conference rooms, kitchenette and copy room
- Tons of natural light throughout
- Easy walking distance to amenities
- Two off-street parking spaces
- Garage door roll up, warehouse space
- Quality finishes



Slabtown: A blend of history and modern urban living

Historically known for its industrial roots and lumber mills, Slabtown has undergone a significant transformation in recent years, evolving into a trendy hub characterized by a mix of old warehouses, modern condos, eclectic shops, and trendy eateries. The area boasts a unique blend of old and new and continues to thrive as a dynamic and sought-after neighborhood in the city.



RESTAURANTS

- Pine State Biscuits
- St. Honoré Boulangerie
- Champagne Poetry
- Good Coffee
- Mama Bird
- Pistils Nursery
- Grassa
- Besaws

RETAILERS

- New Seasons Marketplace
- Orange Theory Fitness
- Troublemaker Barber and Ale Social Club
- Yogasix Slabtown



97
BIKE SCORE



98
WALK SCORE

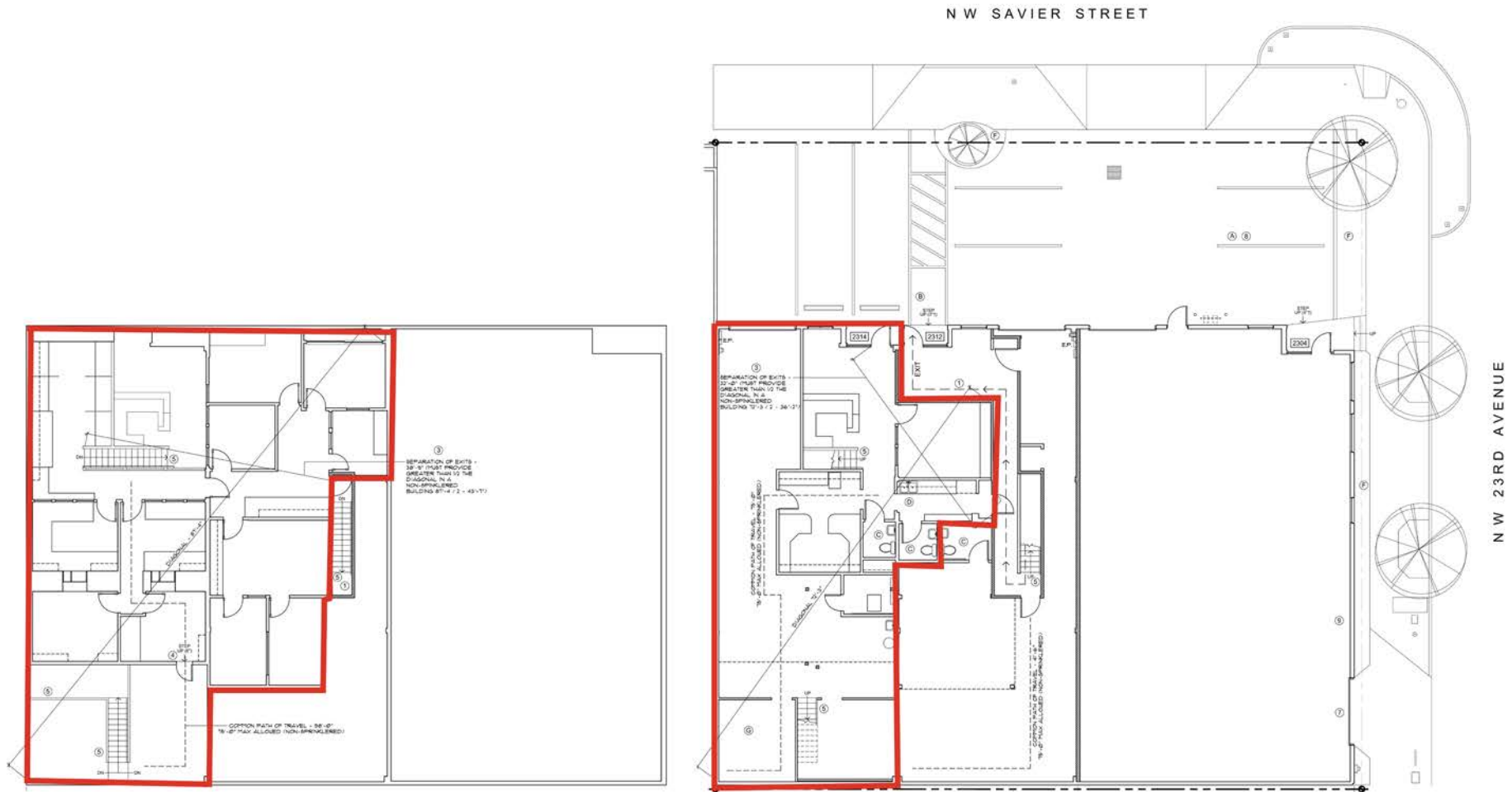
CONTACT

Justin Darling
Sara Daley

c 503 457 2990 / o 503 224 6791 / jdarling@naielliott.com
c 503 457 2990 / o 503 224 6791 / sdaley@naielliott.com

NAI Elliott

Site Plan



CONTACT

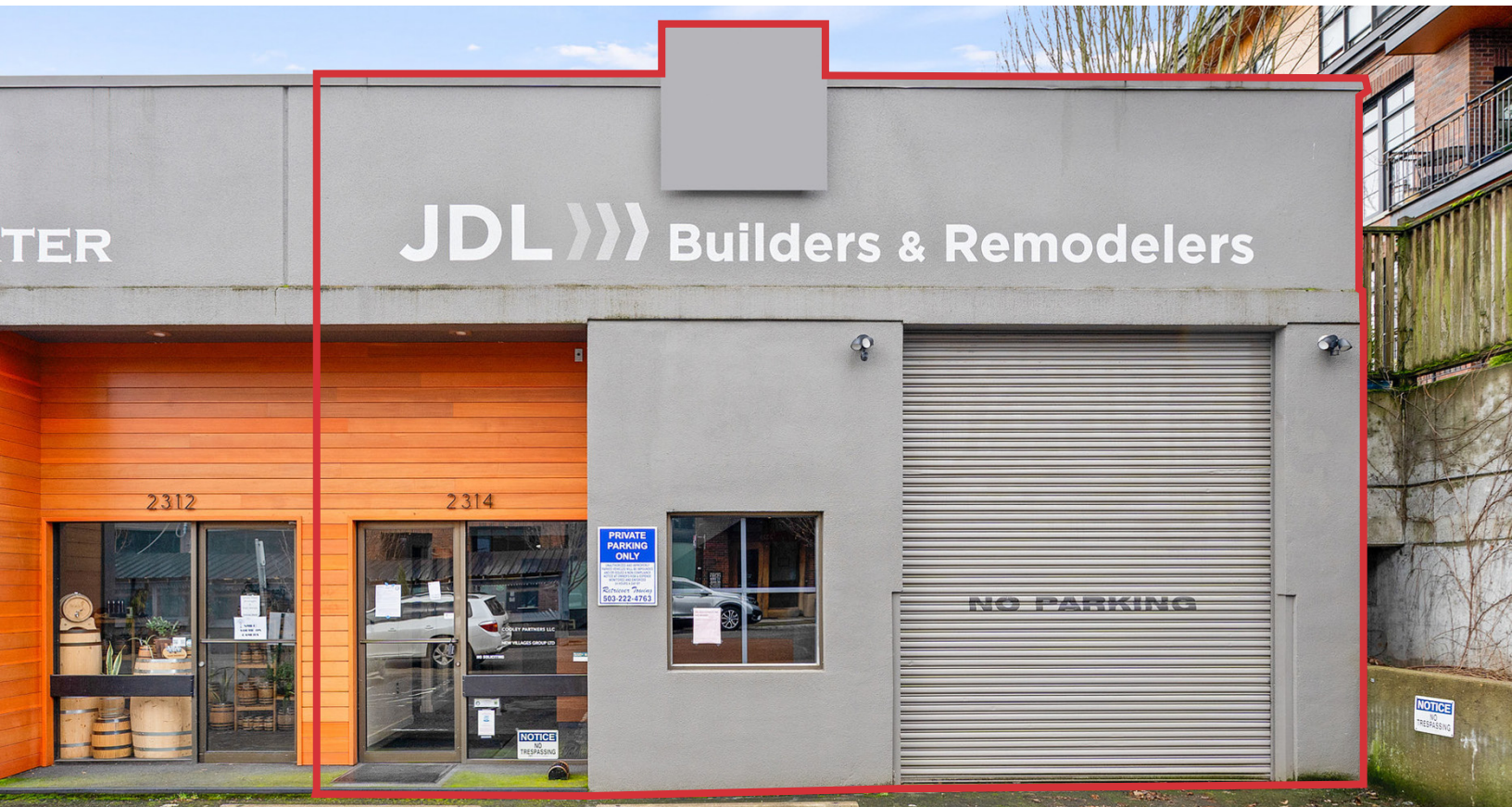
Justin Darling
Sara Daley

c 503 457 2990 / o 503 224 6791 / jdarling@naielliott.com
c 503 457 2990 / o 503 224 6791 / sdaley@naielliott.com

NAI Elliott



Photos



CONTACT

Justin Darling
Sara Daley

c 503 457 2990 / o 503 224 6791 / jdarling@naielliott.com
c 503 457 2990 / o 503 224 6791 / sdaley@naielliott.com

NAI Elliott

The information herein has been obtained from sources we deem reliable. We do not, however, guarantee its accuracy. All information should be verified prior to purchase/leasing. View the Real Estate Agency Pamphlet by visiting our website, www.naielliott.com/agencydisclosures