

# 7200 S 1ST ST

Oak Creek, WI 53154

**Anderson**  
Commercial Group

FOR SALE/LEASE | +/- 143,000 SF INDUSTRIAL PROPERTY AVAILABLE



## OFFERING SUMMARY

Building Size:	+/- 143,000 SF
Office Size:	+/- 16,000 SF
Warehouse Size:	+/- 127,000 SF
Available SF:	+/-
Number of Parking Spaces:	+/- 108
Zoning:	M-1
Lot Size:	+/- 12.5 Acres
Tax / APN #:	7659052000
Current Taxes:	\$108,213.57
Lease Rate:	\$8.95/SF/yr (NNN)
Sale Price:	\$16,000,000

### PATRICK MCGLINN

Senior Vice President  
414.858.5218  
pmcglinn@acgwi.com

### STEVE ANDERSON

President/CEO  
414.858.5200  
sanderson@acgwi.com

## PROPERTY HIGHLIGHTS

- Located one mile from I-94 and two miles from Mitchell International Airport
- Highly desirable property type for either owner user or investor
- Large site with land available for expansion. Vacant land (acreage TBV) to the South with access to Howell Ave, is also available
- Full length skylight in warehouse
- Two level lobby with perimeter office space
- Seller may consider sale/lease back for a portion of the space
- Lease options also available

# 7200 S 1ST ST

Oak Creek, WI 53154



## PROPERTY DETAILS | +/- 143,000 SF INDUSTRIAL PROPERTY FOR SALE/LEASE

### BUILDING INFORMATION

Clear Height	+/- 21 FT
Year Built	1992
Year Last Addition	2006
Drive in's	(1) 14' x 12'
Bay Size	+/- 1,600
Reinforced Slab	+/- 6 inches
Column Space	+/- 40 FT
Dock Doors	12 (8' x 10')

### UTILITIES & AMENITIES

Freight Elevator	Yes
Sprinkler	ESFR
HVAC	RTU's A/C throughout
Electrical	Two Feeds
	4,000 amp; 480/277; 3 phase
	3,000 amp; 480/277; 3 phase
	1,600 amp; 480/277; 3 phase
Water Main Size	12 inch



**PATRICK MCGLINN**  
Senior Vice President  
414.858.5218  
pmcglinn@acgwi.com

**STEVE ANDERSON**  
President/CEO  
414.858.5200  
sanderson@acgwi.com

# 7200 S 1ST ST

Oak Creek, WI 53154

**Anderson**  
Commercial Group

ADDITIONAL PHOTOS | +/- 143,000 SF INDUSTRIAL PROPERTY FOR SALE/LEASE



**PATRICK MCGLINN**  
Senior Vice President  
414.858.5218  
pmcglinn@acgwi.com

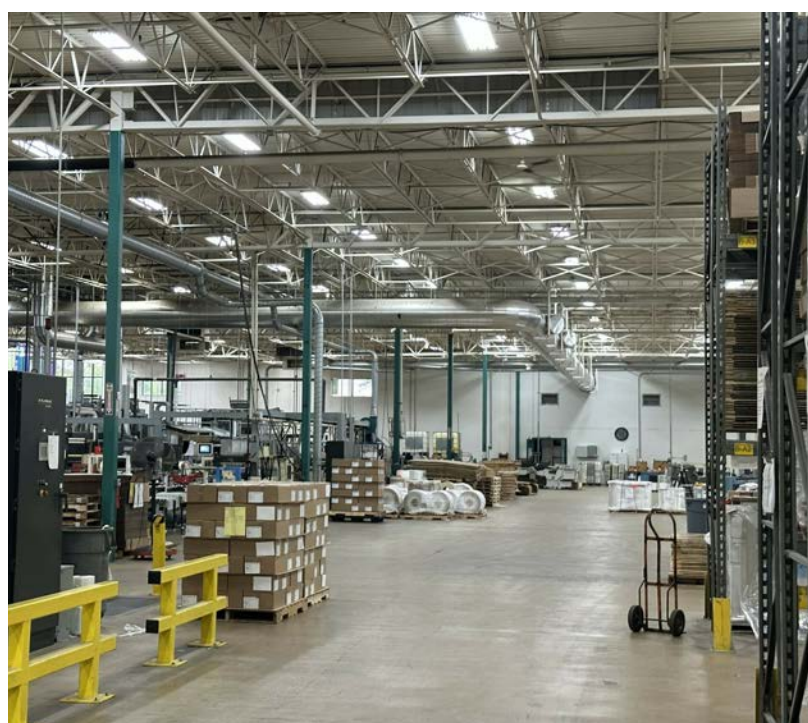
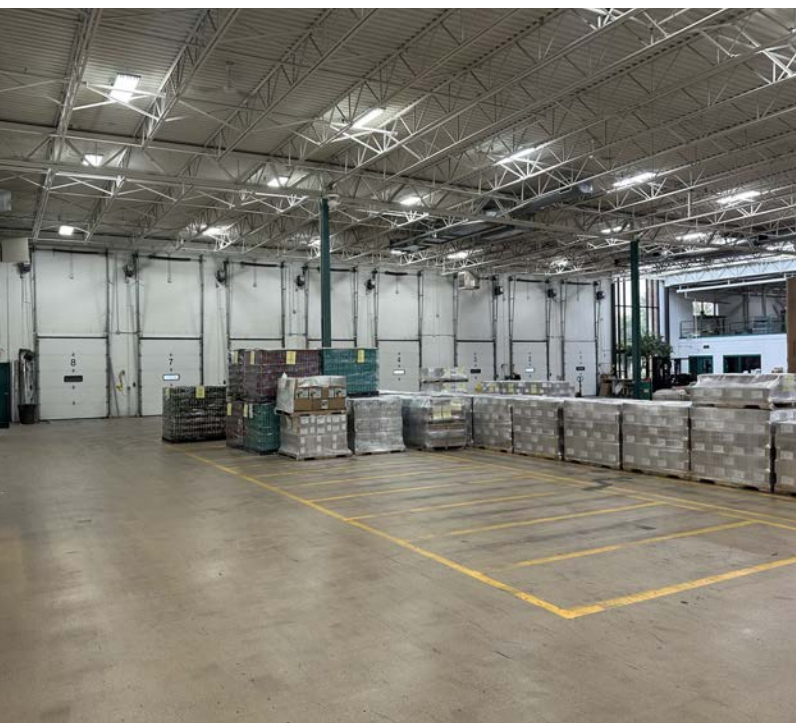
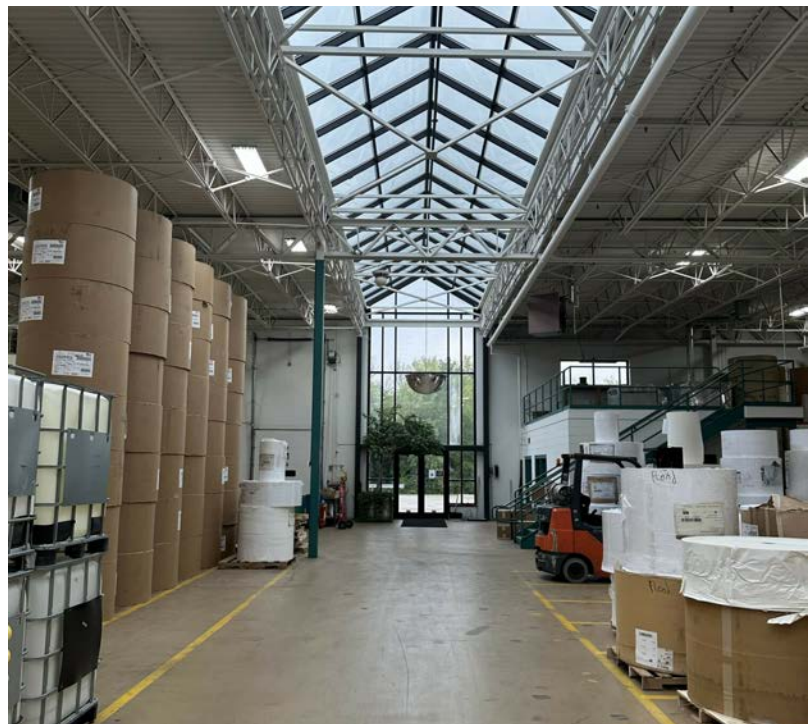
**STEVE ANDERSON**  
President/CEO  
414.858.5200  
sanderson@acgwi.com

# 7200 S 1ST ST

Oak Creek, WI 53154

**Anderson**  
Commercial Group

ADDITIONAL PHOTOS | +/- 143,000 SF INDUSTRIAL PROPERTY FOR SALE/LEASE



**PATRICK MCGLINN**  
Senior Vice President  
414.858.5218  
pmcglinn@acgwi.com

**STEVE ANDERSON**  
President/CEO  
414.858.5200  
sanderson@acgwi.com

# 7200 S 1ST ST

Oak Creek, WI 53154

**Anderson**  
Commercial Group

AERIAL VIEW | +/- 143,000 SF INDUSTRIAL PROPERTY FOR SALE/LEASE



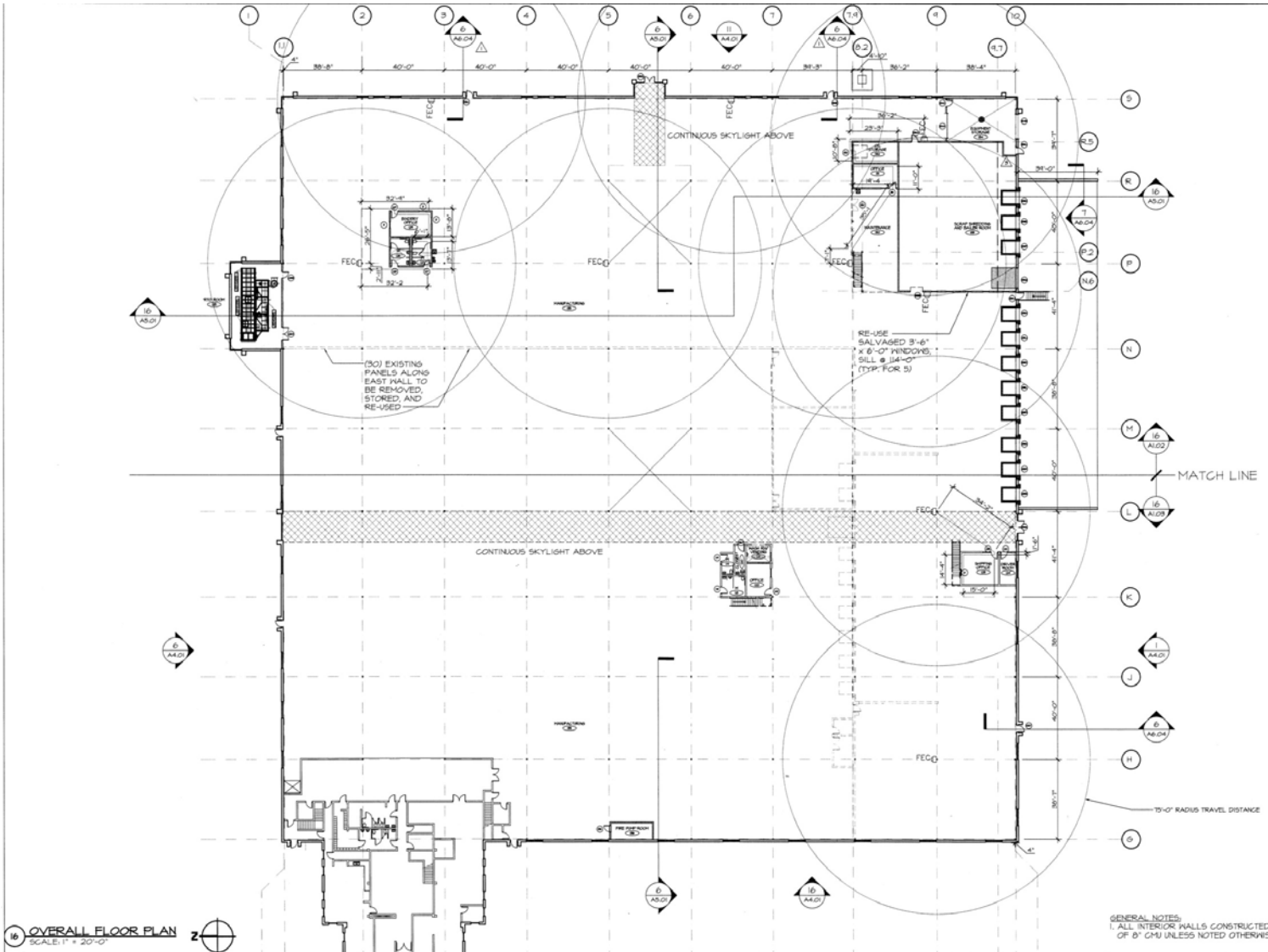
**PATRICK MCGLINN**  
Senior Vice President  
414.858.5218  
pmcglinn@acgwi.com

**STEVE ANDERSON**  
President/CEO  
414.858.5200  
sanderson@acgwi.com

# 7200 S 1ST ST

Oak Creek, WI 53154

FLOOR PLAN | +/- 143,000 SF INDUSTRIAL PROPERTY FOR SALE/LEASE



French and Associates, Inc.  
Architects  
428 North Oakland Avenue  
Wauwatosa, WI 53111  
Tel: 414-962-4158

New Plant Addition For  
**Mc Adams Graphics, Inc.**  
7200 South First Street  
Oak Creek, Wisconsin 53154

**GENERAL NOTE:**  
ALL INTERIOR WALLS CONSTRUCTED OF 8" CMU UNLESS NOTED OTHERWISE.

**SHEET TITLE**  
Overall Floor Plan

**REVISIONS**  
INCLUDES ALL REVISIONS THROUGH 03.21.08  
ADDED - (A, B)

**PROJECT DATA**  
Date: November 10, 2005  
Job No.: 0904  
Drawn By: French  
SHEET NO.

**A1.01**

**PATRICK MCGLINN**  
Senior Vice President  
414.858.5218  
pmcglinn@acgwi.com

**STEVE ANDERSON**  
President/CEO  
414.858.5200  
sanderson@acgwi.com

# 7200 S 1ST ST

Oak Creek, WI 53154



LOCATION MAP | +/- 143,000 SF INDUSTRIAL PROPERTY FOR SALE/LEASE



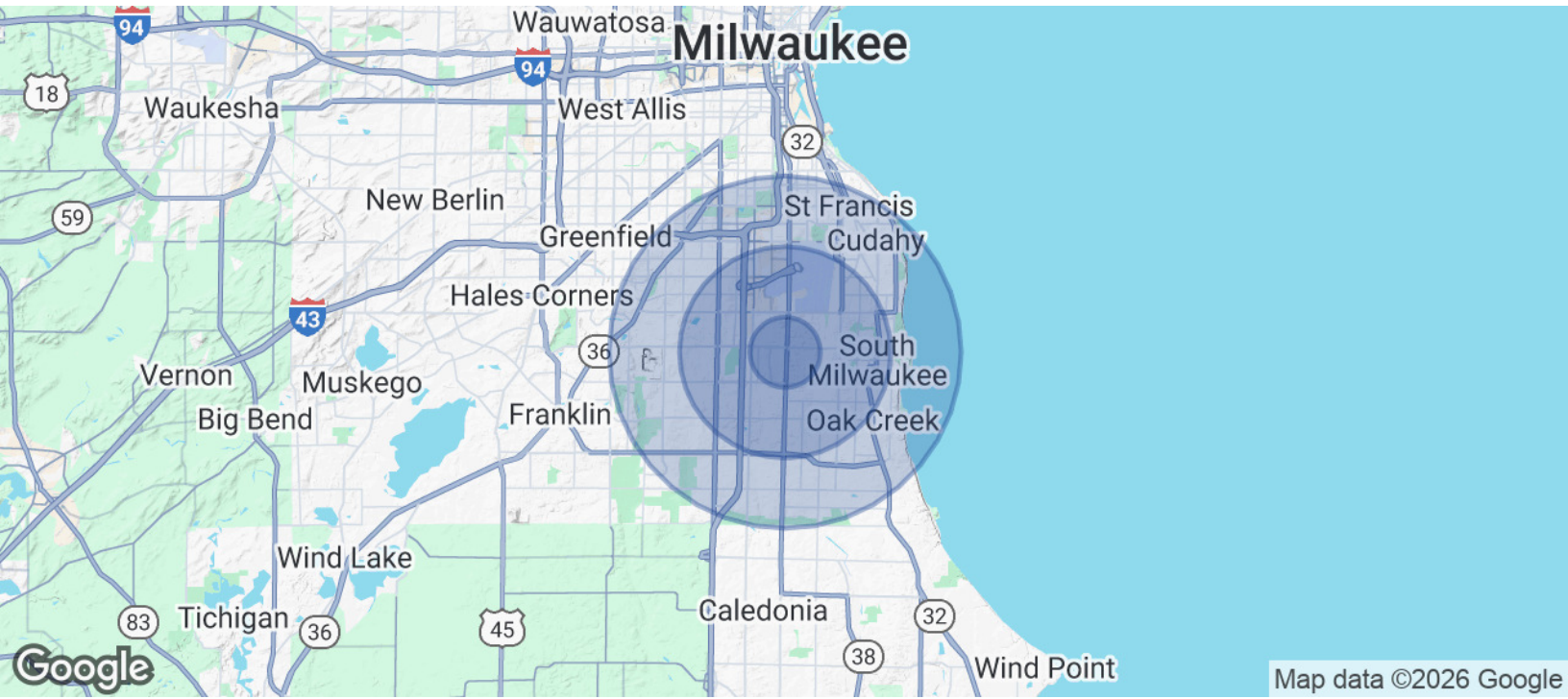
**PATRICK MCGLINN**  
Senior Vice President  
414.858.5218  
pmcglinn@acgwi.com

**STEVE ANDERSON**  
President/CEO  
414.858.5200  
sanderson@acgwi.com

# 7200 S 1ST ST

Oak Creek, WI 53154

DEMOGRAPHICS MAP & REPORT | +/- 143,000 SF INDUSTRIAL PROPERTY FOR SALE/LEASE



POPULATION	1 MILE	3 MILES	5 MILES
Total Population	2,478	66,321	162,065
Average Age	40	42	42
Average Age (Male)	40	40	41
Average Age (Female)	41	43	43

HOUSEHOLDS & INCOME	1 MILE	3 MILES	5 MILES
Total Households	1,052	28,246	68,468
# of Persons per HH	2.4	2.3	2.4
Average HH Income	\$110,255	\$93,550	\$98,560
Average House Value	\$325,646	\$280,614	\$288,447

Demographics data derived from AlphaMap

**PATRICK MCGLINN**  
Senior Vice President  
414.858.5218  
pmcglinn@acgwi.com

**STEVE ANDERSON**  
President/CEO  
414.858.5200  
sanderson@acgwi.com

**DISCLOSURE TO NON-RESIDENTIAL CUSTOMERS**

1 Prior to negotiating on your behalf the brokerage firm, or an agent associated with the firm, must provide you the  
2 following disclosure statement:

3 **DISCLOSURE TO CUSTOMERS** You are a customer of the brokerage firm (hereinafter Firm). The Firm is either an agent  
4 of another party in the transaction or a subagent of another firm that is the agent of another party in the transaction. A  
5 broker or a salesperson acting on behalf of the Firm may provide brokerage services to you. Whenever the Firm is  
6 providing brokerage services to you, the Firm and its brokers and salespersons (hereinafter Agents) owe you, the  
7 customer, the following duties:

- 8 (a) The duty to provide brokerage services to you fairly and honestly.
  - 9 (b) The duty to exercise reasonable skill and care in providing brokerage services to you.
  - 10 (c) The duty to provide you with accurate information about market conditions within a reasonable time if you request  
11 it, unless disclosure of the information is prohibited by law.
  - 12 (d) The duty to disclose to you in writing certain Material Adverse Facts about a property, unless disclosure of the  
13 information is prohibited by law (see lines 42-51).
  - 14 (e) The duty to protect your confidentiality. Unless the law requires it, the Firm and its Agents will not disclose your  
15 confidential information or the confidential information of other parties (see lines 23-41).
  - 16 (f) The duty to safeguard trust funds and other property held by the Firm or its Agents.
  - 17 (g) The duty, when negotiating, to present contract proposals in an objective and unbiased manner and disclose the  
18 advantages and disadvantages of the proposals.
- 19 Please review this information carefully. An Agent of the Firm can answer your questions about brokerage services,  
20 but if you need legal advice, tax advice, or a professional home inspection, contact an attorney, tax advisor, or home  
21 inspector. This disclosure is required by section 452.135 of the Wisconsin statutes and is for information only. It is a  
22 plain-language summary of the duties owed to a customer under section 452.133(1) of the Wisconsin statutes.

23 **CONFIDENTIALITY NOTICE TO CUSTOMERS** The Firm and its Agents will keep confidential any information given to the  
24 Firm or its Agents in confidence, or any information obtained by the Firm and its Agents that a reasonable person  
25 would want to be kept confidential, unless the information must be disclosed by law or you authorize the Firm to  
26 disclose particular information. The Firm and its Agents shall continue to keep the information confidential after the  
27 Firm is no longer providing brokerage services to you.

- 28 The following information is required to be disclosed by law:
- 29 1. Material Adverse Facts, as defined in Wis. Stat. § 452.01(5g) (see lines 42-51).
  - 30 2. Any facts known by the Firm or its Agents that contradict any information included in a written inspection  
31 report on the property or real estate that is the subject of the transaction.

32 To ensure that the Firm and its Agents are aware of what specific information you consider confidential, you may  
33 list that information below (see lines 35-41) or provide that information to the Firm or its Agents by other means. At a  
34 later time, you may also provide the Firm or its Agents with other Information you consider to be confidential.

35 **CONFIDENTIAL INFORMATION:** \_\_\_\_\_  
36 \_\_\_\_\_  
37 \_\_\_\_\_

38 **NON-CONFIDENTIAL INFORMATION** (the following information may be disclosed by the Firm and its Agents): \_\_\_\_\_  
39 \_\_\_\_\_  
40 \_\_\_\_\_  
41 \_\_\_\_\_ (Insert information you authorize to be disclosed, such as financial qualification information.)

42 **DEFINITION OF MATERIAL ADVERSE FACTS**  
43 A "Material Adverse Fact" is defined in Wis. Stat. § 452.01(5g) as an Adverse Fact that a party indicates is of such  
44 significance, or that is generally recognized by a competent licensee as being of such significance to a reasonable  
45 party, that it affects or would affect the party's decision to enter into a contract or agreement concerning a transaction  
46 or affects or would affect the party's decision about the terms of such a contract or agreement.

47 An "Adverse Fact" is defined in Wis. Stat. § 452.01(1e) as a condition or occurrence that a competent licensee  
48 generally recognizes will significantly and adversely affect the value of the property, significantly reduce the structural  
49 integrity of improvements to real estate, or present a significant health risk to occupants of the property; or information  
50 that indicates that a party to a transaction is not able to or does not intend to meet his or her obligations under a  
51 contract or agreement made concerning the transaction.

52 **NOTICE ABOUT SEX OFFENDER REGISTRY** You may obtain information about the sex offender registry and persons  
53 registered with the registry by contacting the Wisconsin Department of Corrections on the Internet at  
54 <http://www.doc.wi.gov> or by telephone at 608-240-5830.