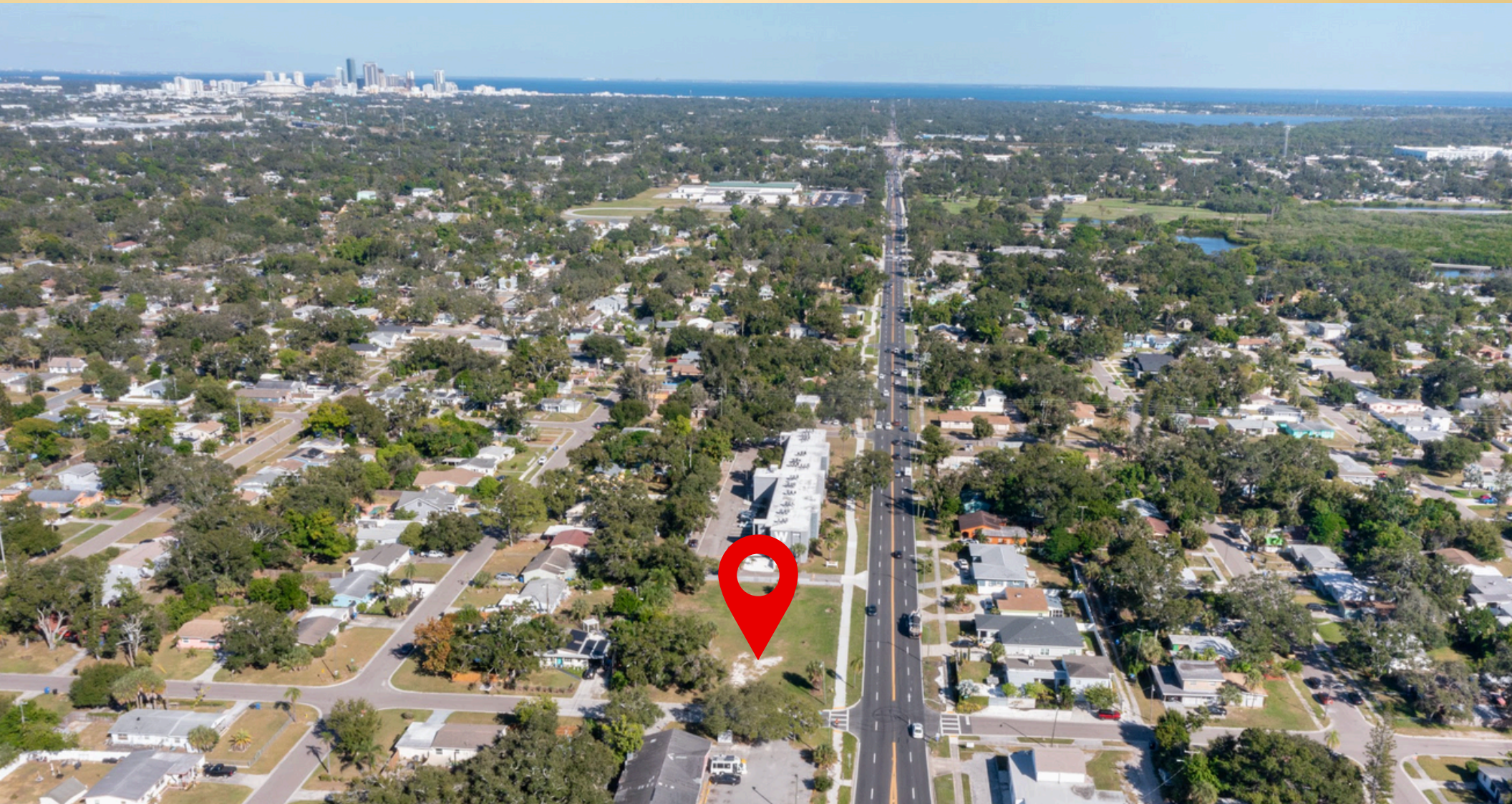


FOR SALE

4689 22nd AVE S. ST PETERSBURG, FL 33711



WITTNER WOLLMAN GROUP



KW ST PETE
KELLERWILLIAMS®

JUSTINE FITE

214-232-9595

JUSTINE@KWCOMMERCIAL.COM



FOR SALE

4689 22nd AVE S. ST PETERSBURG, FL 33711



WITTNER WOLLMAN GROUP



- **\$750,000**
- **THREE PARCELS**
- **142.5' X 185'**
- **0.60 AC**
- **26,363 SF**
- **ZONE: NSM-1**
- **CONVENIENT ACCESS TO PUBLIC TRANSIT**
- **PREVIOUSLY APPROVED IN 2018 FOR 12 WORKFORCE HOUSING UNITS. [PLANS AND CITY APPROVAL LETTER AVAILABLE UPON REQUEST]**
- **SURVEY AVAILABLE**

PRIME LOCATION JUST MINUETS TO DOWNTOWN ST. PETERSBURG AND AWARD-WINNING GULF BEACHES. WITHIN WALKING DISTANCE TO THE HISTORIC GULFPORT WATERFRONT ARTS DISTRICT AND CLAM BAYOU NATURE PRESERVE.

KW ST PETE
KELLERWILLIAMS®

JUSTINE FITE

214-232-9595

JUSTINE@KWCOMMERCIAL.COM





WITTNER WOLLMAN GROUP

Award-Winning
Gulf Beaches



Gulfport Historic
Waterfront
Arts District



Fusion 49th Street
South Business District



Downtown
St. Pete

