



# RESTAURANT SPACE IN BROADBENT BUSINESS PARK

3607 - 3667 WEST 2100 SOUTH SALT LAKE CITY, UTAH

**\$18.00 PSF NNN**



## PROPERTY DETAILS

- ☑ 2,229 SF
- ☑ Two (2) Unisex Restrooms
- ☑ FF&E Included
- ☑ Walk-In Freezer & Fridge
- ☑ Under The Sink Grease Trap In Unit
- ☑ Currently No Hood Vent; Option To Be Installed
- ☑ 74 Buildings Making Up 4,000,000 SF Within Walking Distance
- ☑ 8 Buildings & 120,784 SF In The Business Park

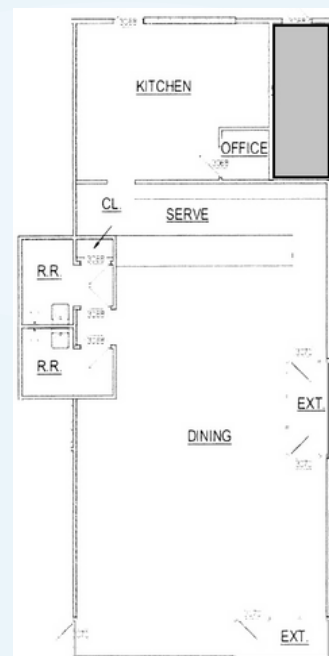
## CONTACT US

**DEREK KLOPPER**

✉ derek@cresutah.com ☎ 801.897.9264

**COLTER SMITH**

✉ colter@cresutah.com ☎ 801.755.8794 🌐 [www.cresutah.com](http://www.cresutah.com)



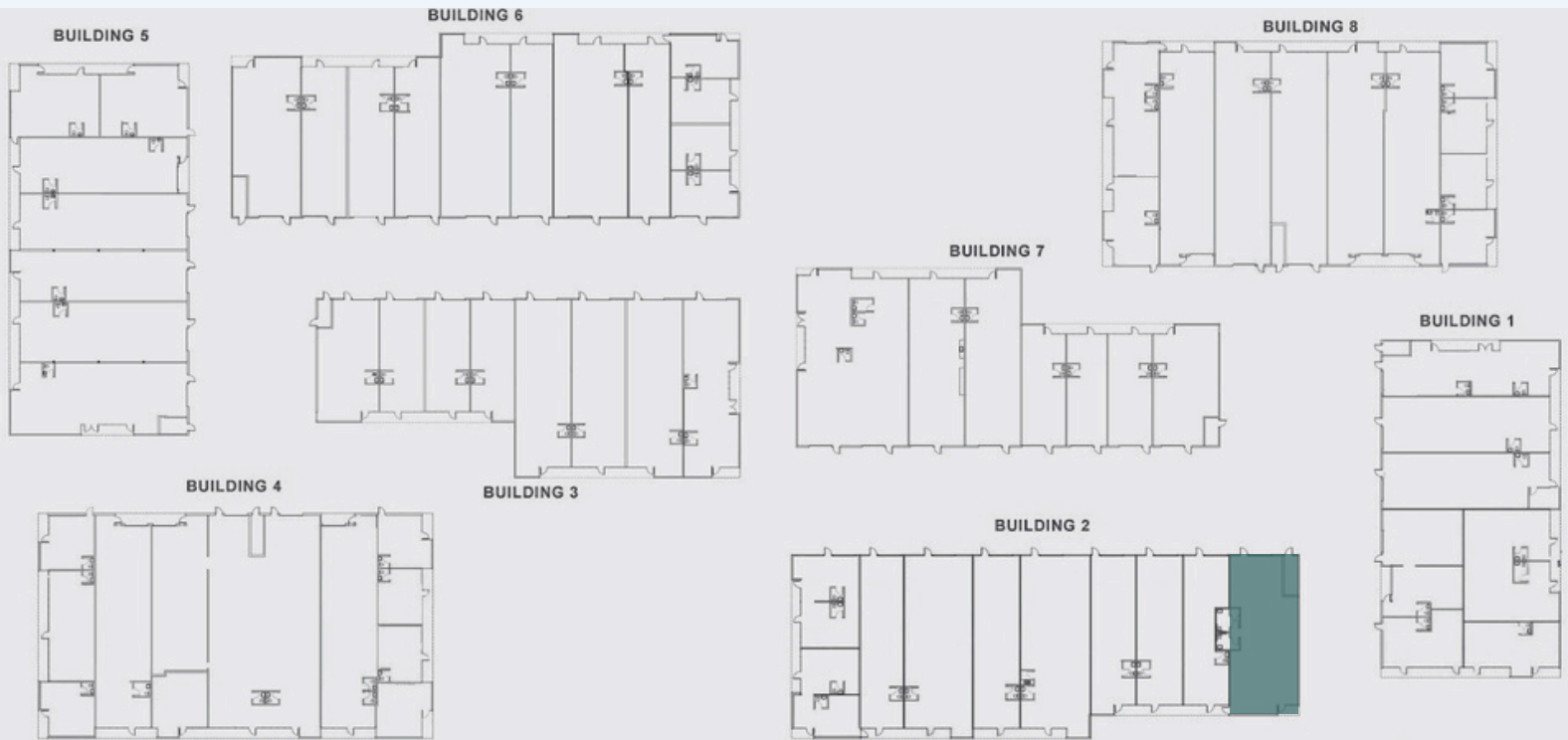
Call Us

**801.876.6070** 📞



# RESTAURANT SPACE IN BROADBENT BUSINESS PARK

3607 - 3667 WEST 2100 SOUTH SALT LAKE CITY, UTAH



## RESTAURANT SPACE

- ✓ Building 2
- Unit 3636: 2,229 SF



This information is given with the understanding that all negotiations and/or real estate activity related to the property described above shall be conducted through this CRES office. The above information while not guaranteed, was obtained from sources we believe to be reliable.

### CONTACT US

**DEREK KLOPFER**

✉ [derek@cresutah.com](mailto:derek@cresutah.com)

☎ 801.897.9264

**COLTER SMITH**

✉ [colter@cresutah.com](mailto:colter@cresutah.com)

☎ 801.755.8794

🌐 [www.cresutah.com](http://www.cresutah.com)

Call Us  
**801.876.6070** ☎