

For Lease

GEORGETOWN MEDICAL OFFICE BUILDING

8800 W 75TH STREET MERRIAM, KS 66204



**Well
tower**



Prime medical office suites.

AVAILABILITIES

Suite 2 - 2,302 SF

Suite 6 - 1,619 SF

Suite 10 - 3,940 SF

Suite 145 - 2,915 SF

Suite 149 - 2,850 SF

Suite 150 - 1,357 SF

Suite 228 - 1,149 SF

Suite 269 - 10,340 SF

Suite 281 - 2,769 SF

Suite 285 - 6,577 SF

Suite 300 - 1,306 SF

Suite 312 - 1,304 SF

Suite 320 - 1,293 SF

Suite 330 - 1,721 SF

Suite 333 - 1,797 SF

Suite 340 - 1,646 SF

Suite 348 - 3,135 SF

Suite 356 - 2,594 SF

Suite 360 - 3,608 SF

Suite 390 - 8,424 SF

LEASE RATE: \$26.00 PSF NNN

**Well
tower**

93,142 SF

Professional medical office building on the campus of AdventHealth Shawnee Mission



Highly desired on-campus location



Hospital security services located on site



Designated physician parking



Visibility and access off I-35 at 75th Street



Variety of nearby retail and restaurants



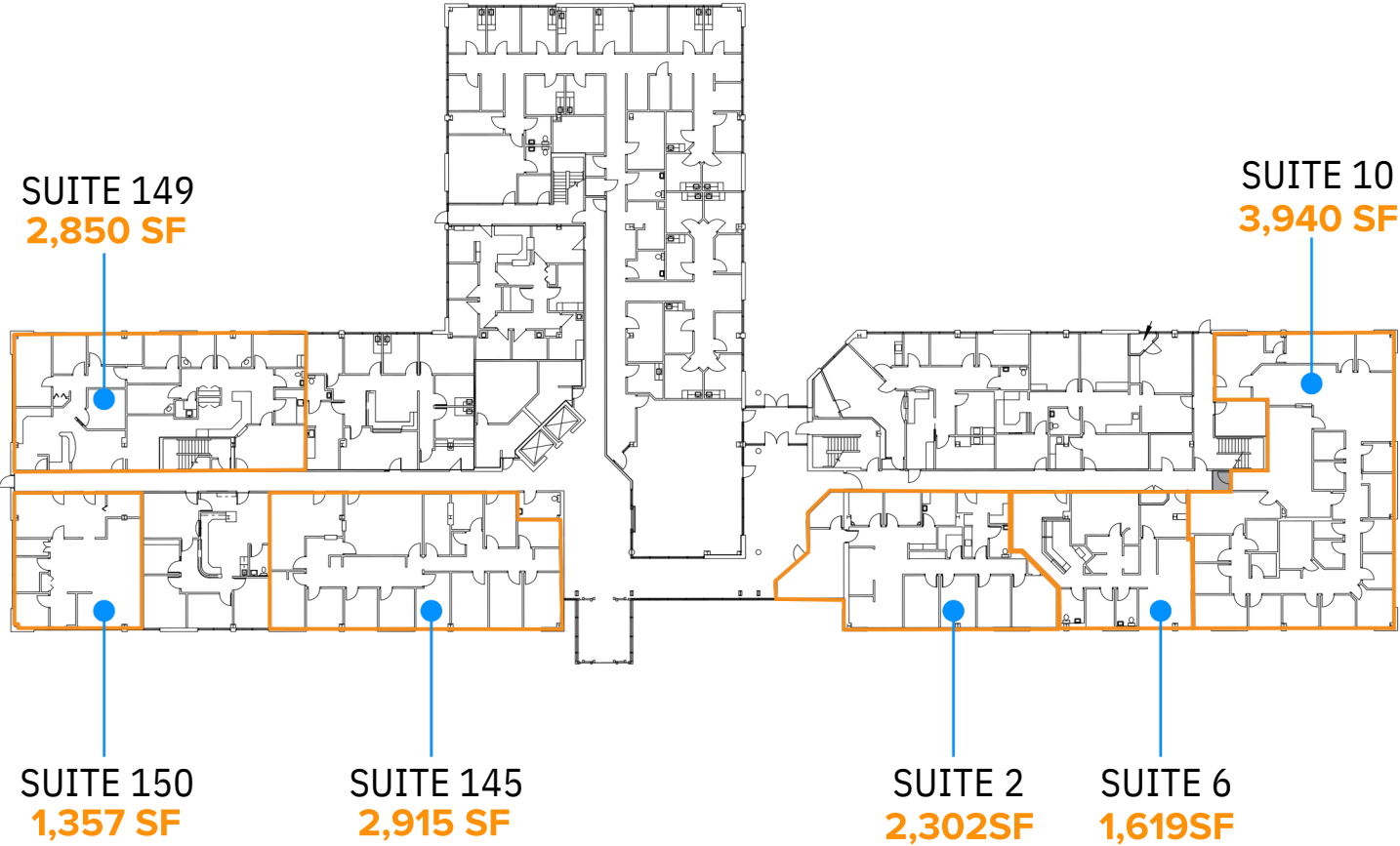
Adaptable medical space.

Discover the ideal medical space with our adaptable floor plans, tailored for healthcare providers of all sizes. From solo practitioners to multi-specialty clinics, our innovative designs offer the flexibility to accommodate your evolving practice.



Well
tower

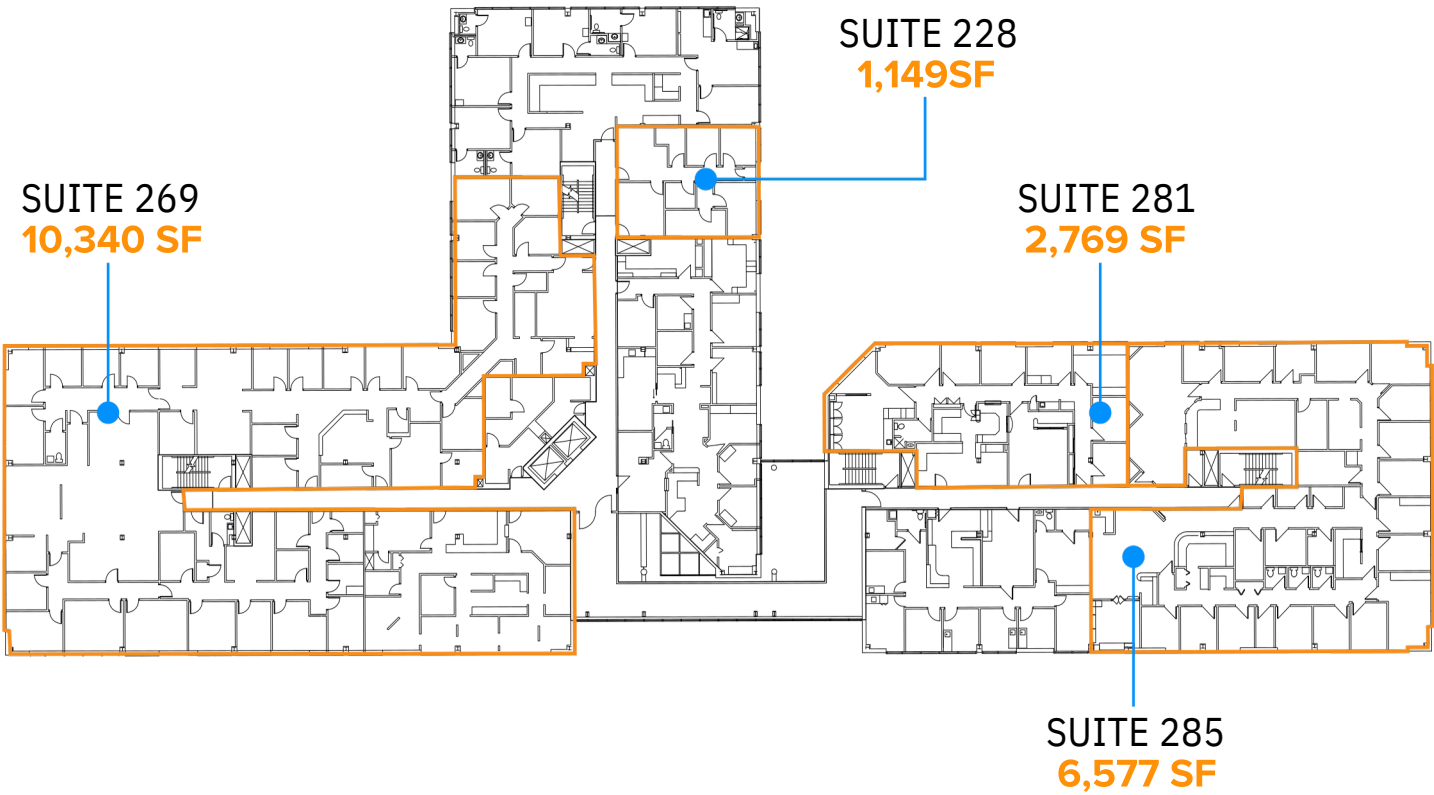
FIRST FLOOR



Scan for virtual
tours of availability



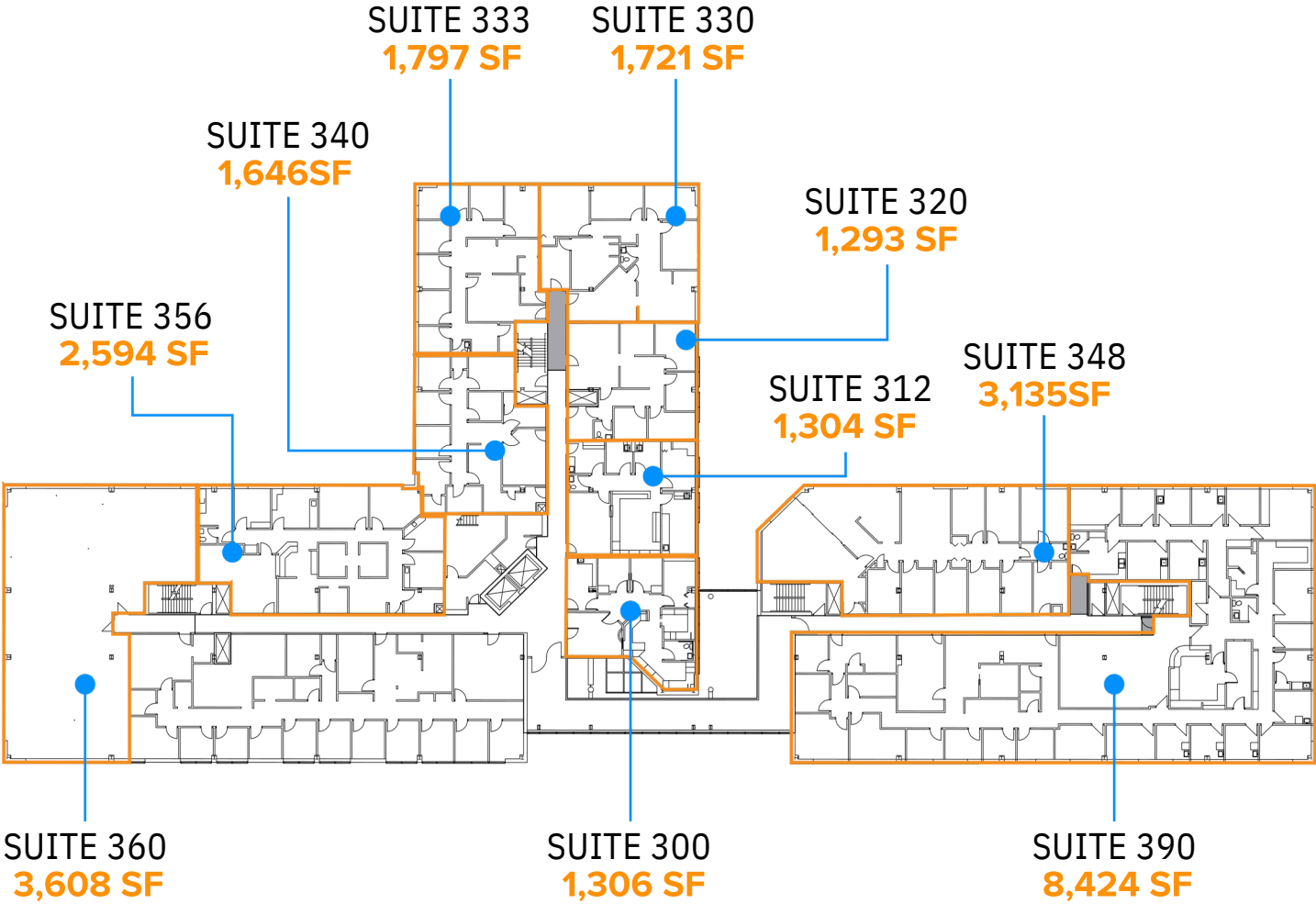
SECOND FLOOR



Scan for virtual
tours of availability



THIRD FLOOR



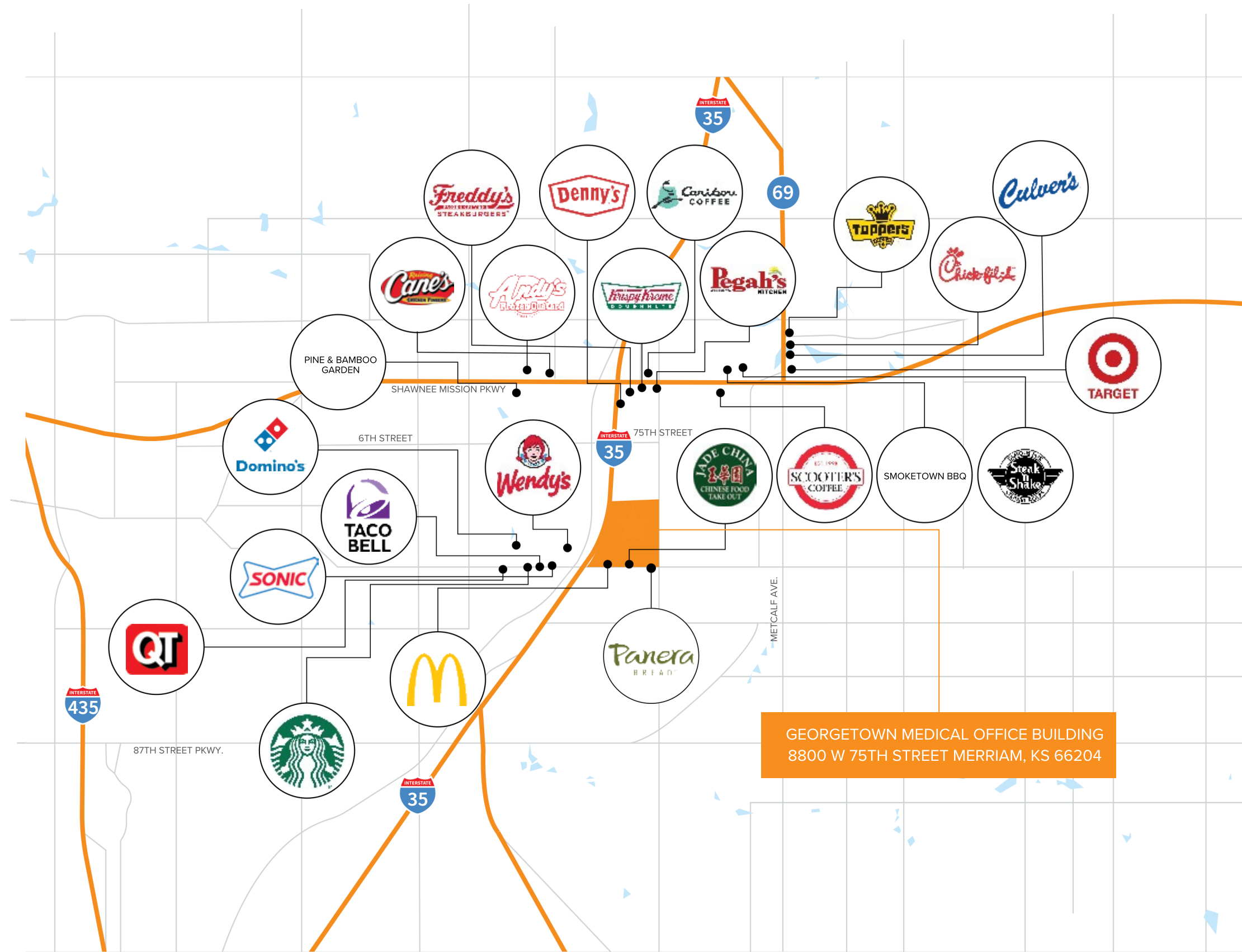
Scan for virtual
tours of availability



Merriam Kansas.

Where the suburbs meet
metropolitan convenience.

Nestled in the heart of Johnson County, Merriam, Kansas offers the perfect blend of suburban charm and urban convenience. Ideally situated just 10 miles southwest of downtown Kansas City and bordered by popular suburbs like Overland Park and Shawnee, Merriam benefits from its strategic position along Interstate 35, ensuring seamless connectivity to the wider Kansas City metropolitan area.





BROKER CONTACTS

Patrick Meraz

+1 913 469 4622

patrick.meraz@jll.com

Anné Erickson

+1 913 469 4657

anne.erickson@am.jll.com

