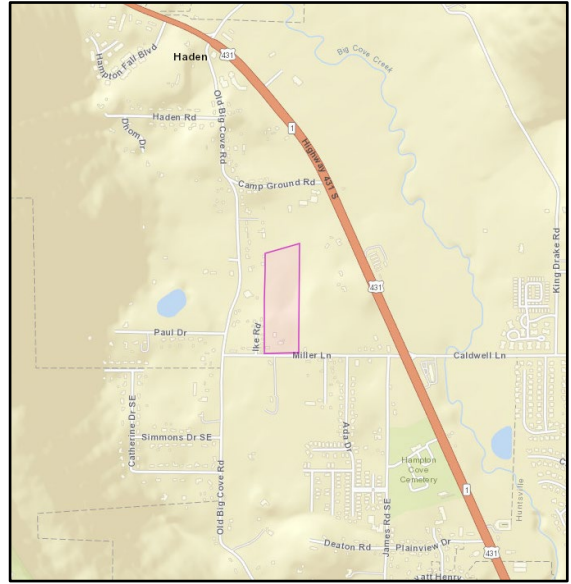


SRS

STEPHENS REAL ESTATE SERVICES

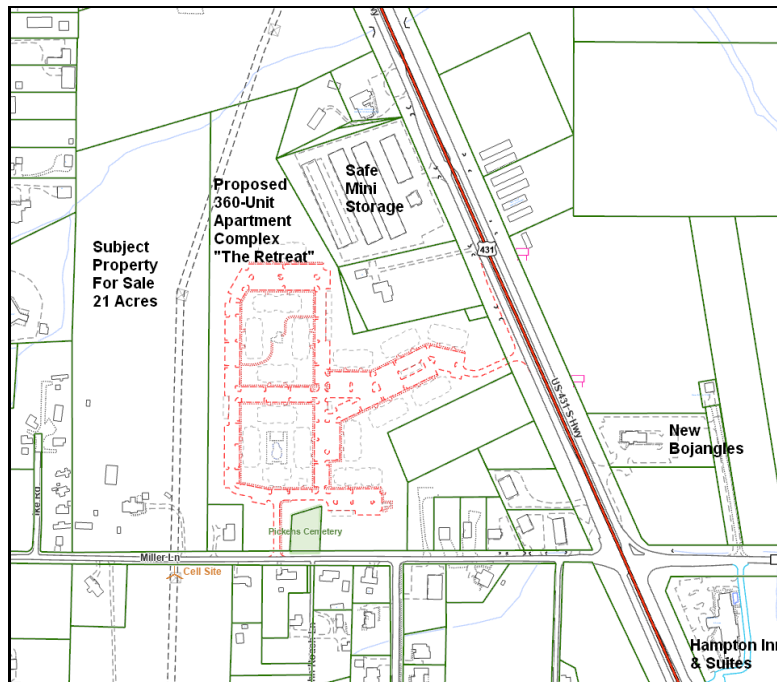
FOR SALE – 21 +/- ACRES: 169 Miller Lane, Brownsboro, AL 35741



Excellent opportunity for development in the Hampton Cove area.

Approximately 1/4 mile west of U.S. Hwy. 431. *Potential Multi-Family Development*

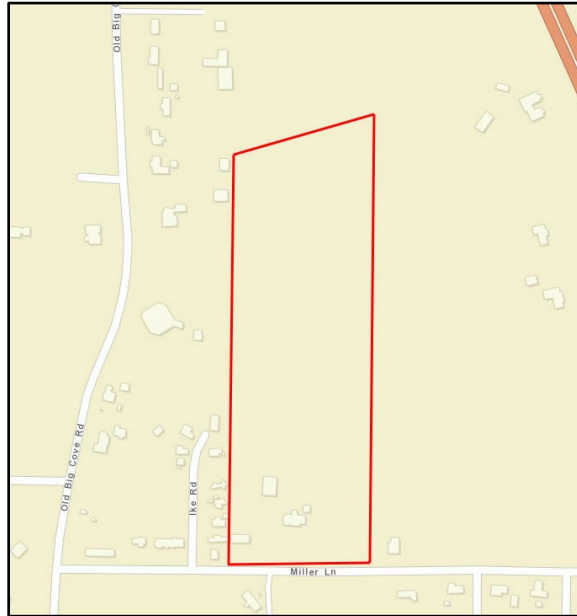
- No Current Zoning; can be annexed into Huntsville city limits
- Owner Financing Available
- 543' Frontage on Miller Ln.
- Public Sewer at north boundary
- \$1.97 PSF / \$1,800,000



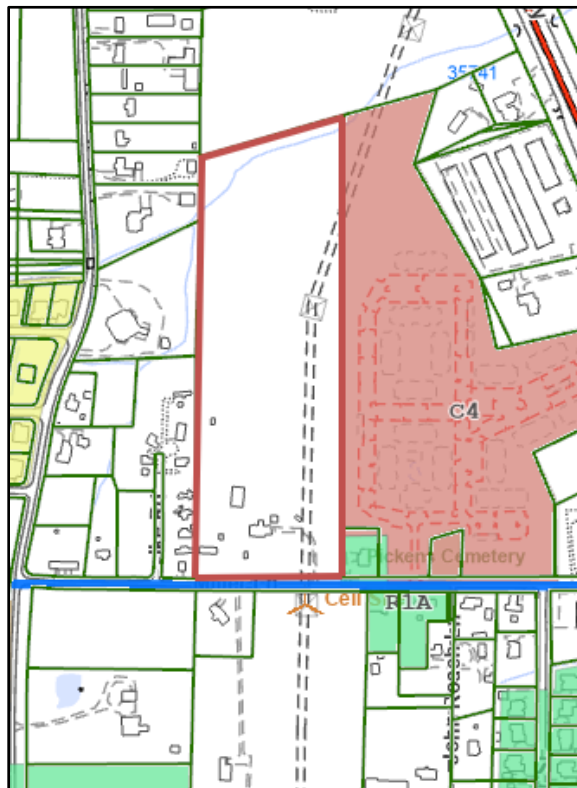
Leigh Stephens, Broker 203 East Side Square, Ste. 2-C, Huntsville, AL 35801 (256) 533-7878

SRS

STEPHENS REAL ESTATE SERVICES



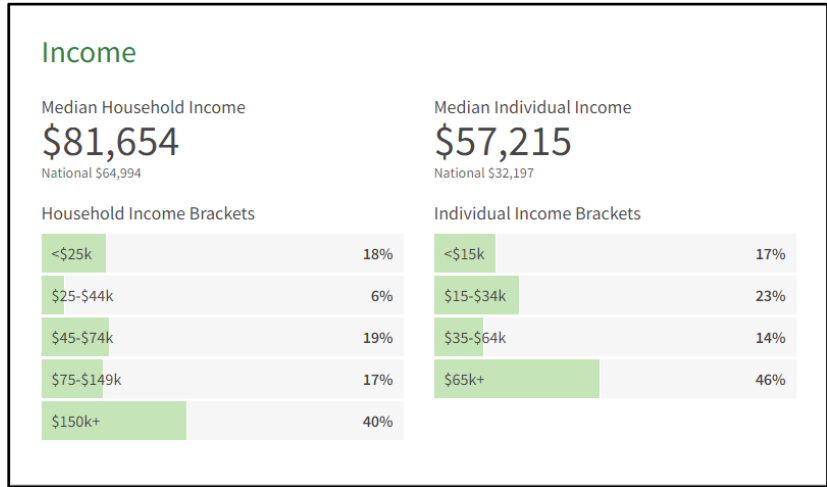
Source: Madison County Tax Assessor's Website
Parcel Map



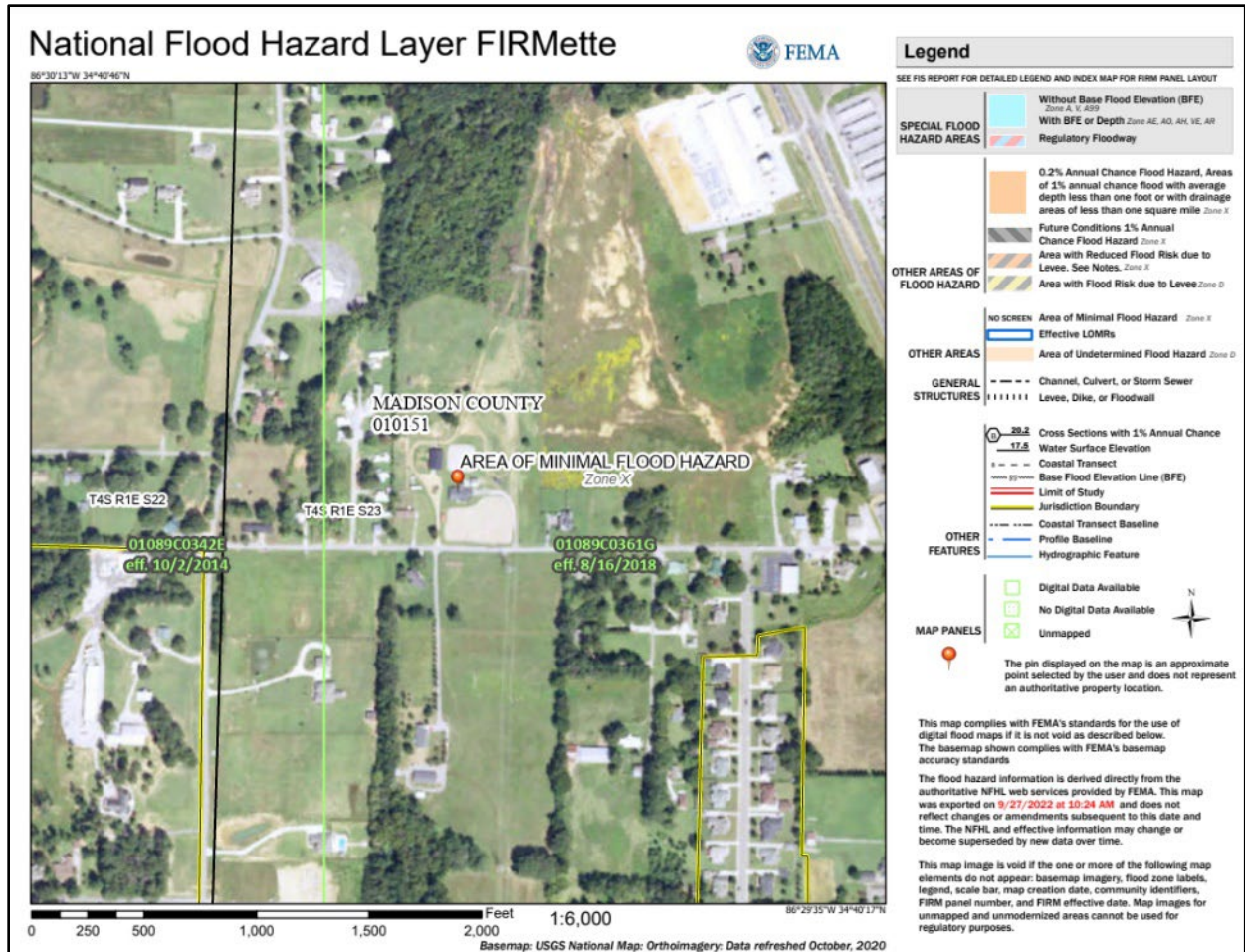
Source: Huntsville GIS: Zoning Map:
Currently not zoned; however, it can be annexed
into Huntsville's city limits.

SRS

STEPHENS REAL ESTATE SERVICES



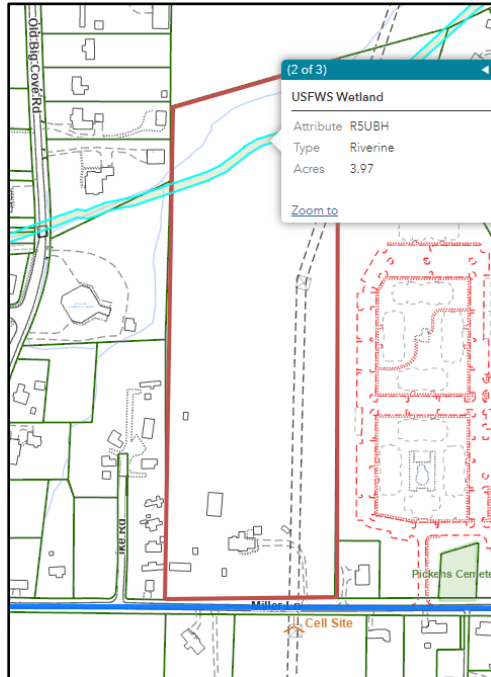
Source: Niche.com - Income



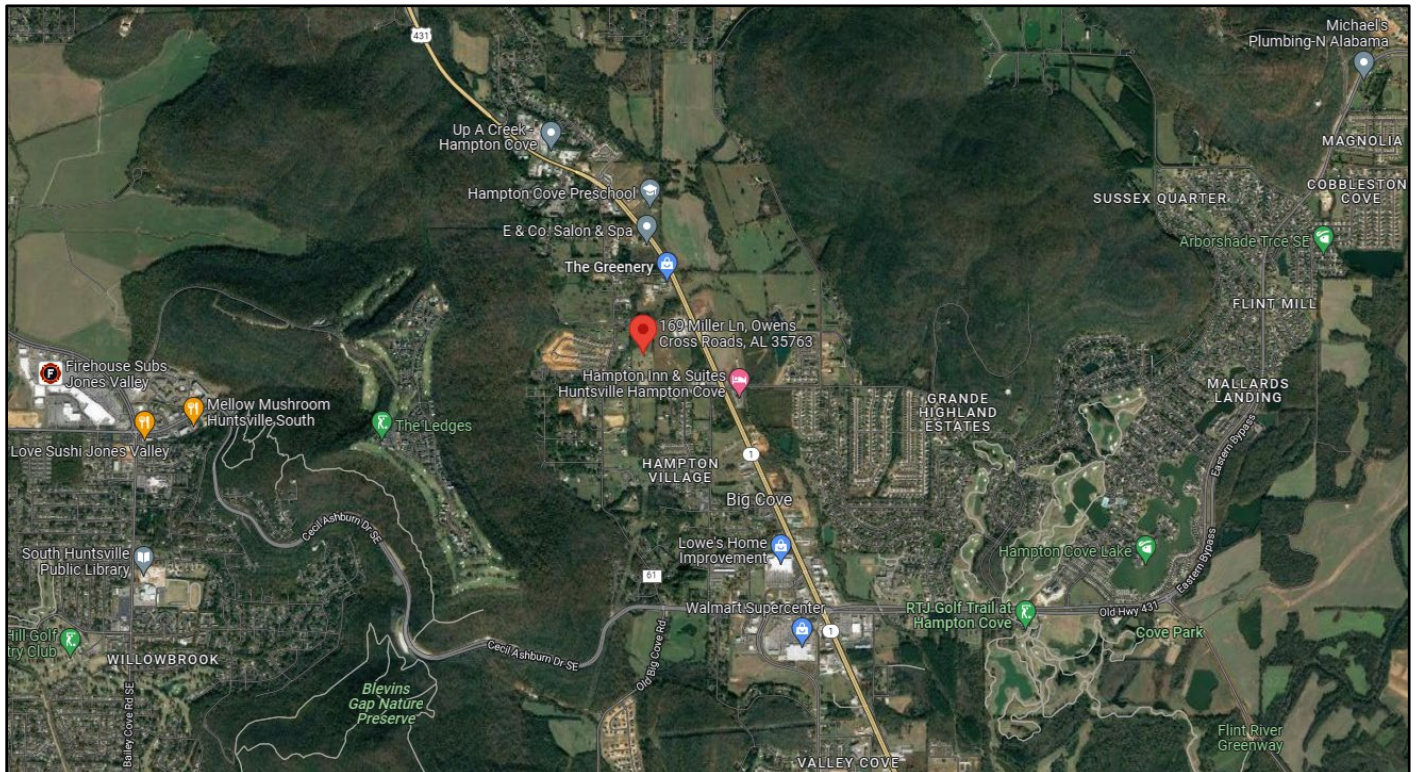
Source: FEMA.gov - No Flood Hazard

SRS

STEPHENS REAL ESTATE SERVICES



Source: Huntsville GIS: USFWS Wetlands Overlay
Small Area of Riverine which bisects the property
from east to west near its north boundary.



Source: Google Maps - Neighborhood

Leigh Stephens, Broker 203 East Side Square, Ste. 2-C, Huntsville, AL 35801 (256) 533-7878