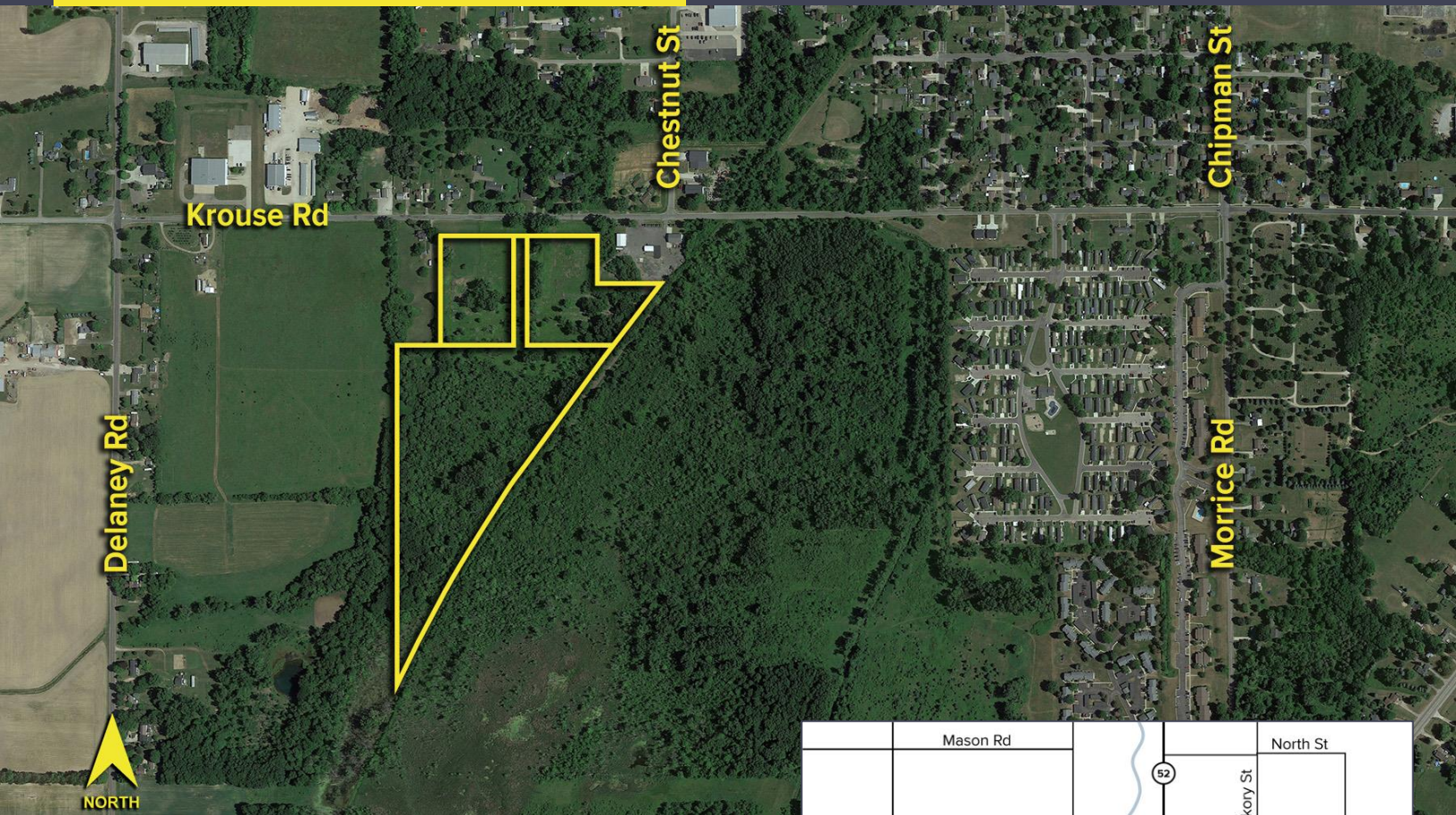


KROUSE ROAD  
OWOSSO, MICHIGAN

LAND FOR SALE  
30.31 Acres Available



**SIGNATURE  
ASSOCIATES**  
KNOW SIGNATURE | KNOW RESULTS



## PROPERTY FEATURES

- 30.31 acres available
- All utilities available near site
- Zoned for marijuana grow and light industrial uses
- Seller has plans completed for (2) 5-acre lots that can be purchased separately
- Sale Price: \$606,200.00 (\$20,000/acre)



For more information, please contact:

**JUSTIN GAFFREY**  
(248) 799 3143  
[jgaffrey@signatureassociates.com](mailto:jgaffrey@signatureassociates.com)

**SIGNATURE ASSOCIATES**  
One Towne Square, Suite 1200  
Southfield, MI 48076  
[www.signatureassociates.com](http://www.signatureassociates.com)

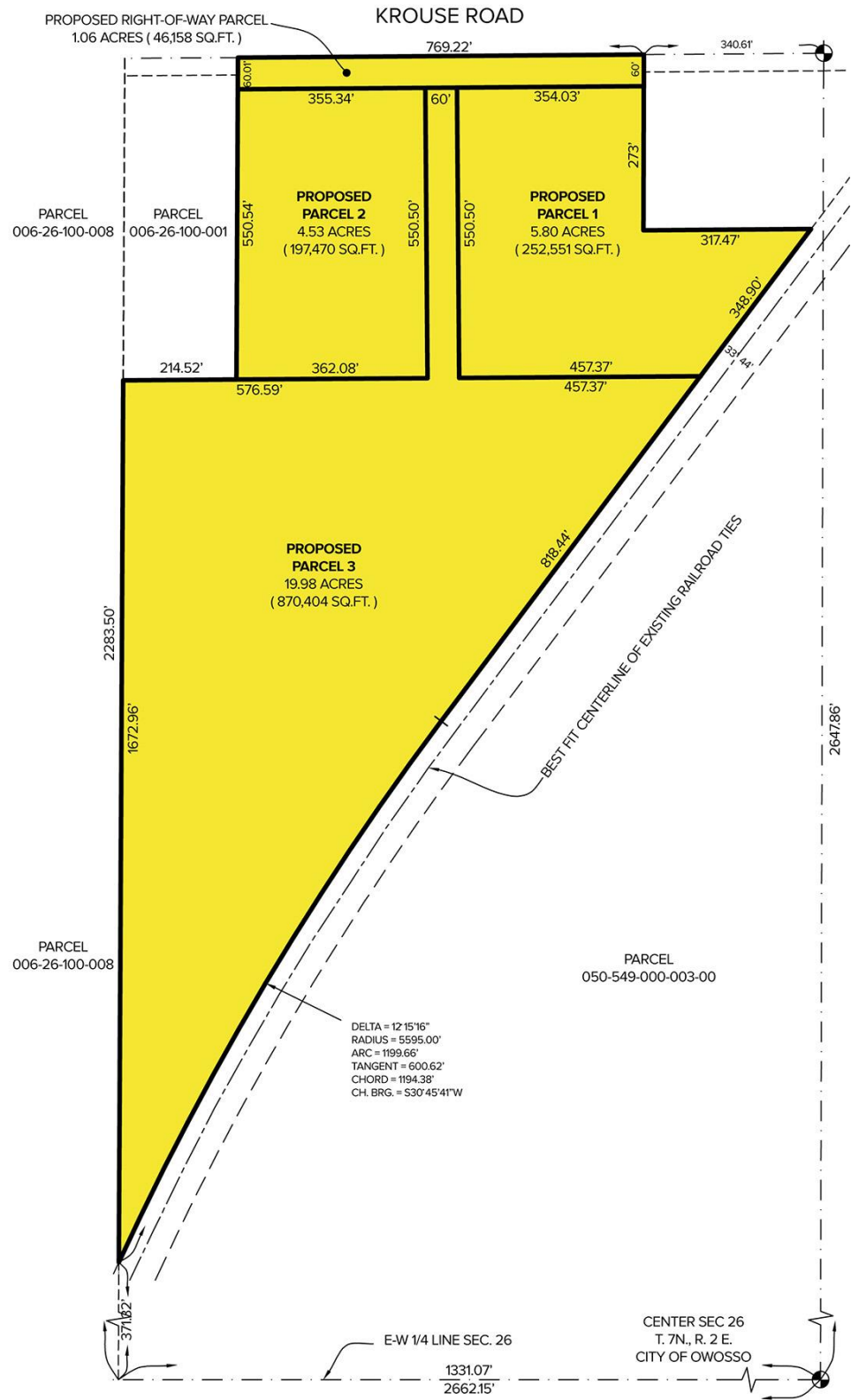
Information is subject to verification and no liability for errors or omissions is assumed. Price is subject to change and listing withdrawal.

# Krouse Road – Owosso, Michigan

## Land For Sale

30.31  
Acres  
AVAILABLE

### Site Plan



For more information, please contact:  
**JUSTIN GAFFREY**  
(248) 799 3143  
jgaffrey@signatureassociates.com

**SIGNATURE ASSOCIATES**  
One Towne Square, Suite 1200  
Southfield, MI 48076  
www.signatureassociates.com

Information is subject to verification and no liability for errors or omissions is assumed. Price is subject to change and listing withdrawal.