

Downtown Olympia

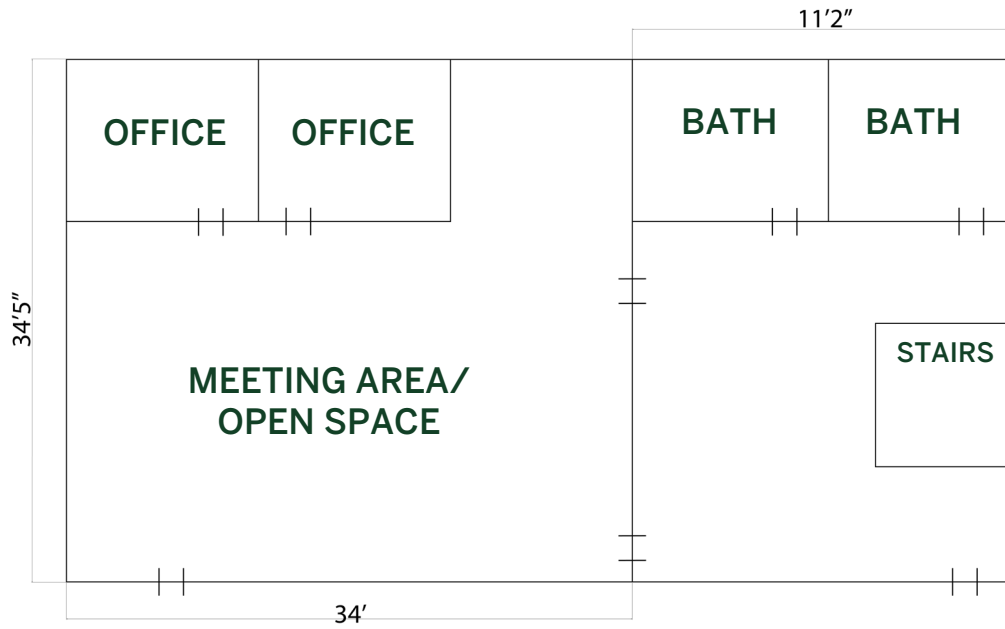
OFFICE BUILDING FOR SALE



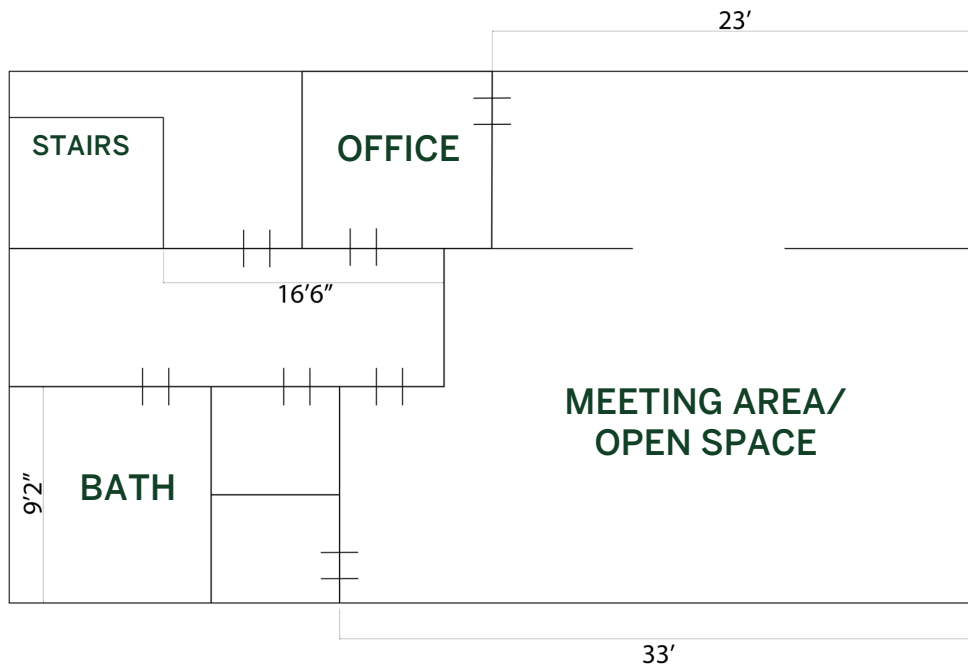
FOR SALE: \$800,000

1015 10TH AVE SE
OLYMPIA, WA

MAIN FLOOR



BOTTOM FLOOR







ABOUT THE PROPERTY

Versatile professional office building in downtown Olympia. The property could be an investment property allowing for 1 or 2 tenants, or an ideal owner-user opportunity, strategically positioned in downtown Olympia. Offering 3,312 sq ft of adaptable space and nine convenient parking stalls. The location has intercity transit lines near by, and very close to I-5. The first floor has 2-3 Private offices with an open space meeting room and 2 bathrooms. The basement floor has 1 private office with 2 open space meeting rooms and 1 bathroom. Rooms could be demised if there was a need for more private offices.

BUILDING SF: 3312

ZONING: PO/RM

PROPERTY: 0.16 ACRES

PARCEL: 78204400400

**CONTACT BROKER
FOR SHOWINGS**



Tyler Kanda

COMMERCIAL BROKER

360.789.9846

tylerkanda@greenecommercial.com



**GREENE
COMMERCIAL**