

SOUTHWEST MEDICAL PLAZA II

5801 Oakbend Trail
Fort Worth, TX 76132

Outpatient Medical For Lease



Medical Leasing:
214.461.2383

Lincoln

Peter Shaw
214.461.2302
PShaw@lpc.com

Douglas Maclay
214.461.2371
dmaclay@lpc.com

Elizabeth Madden
214.461.2366
emadden@lpc.com

Banks Newton
214.461.2388
bnewton@lpc.com

Lincoln Property Company
8140 Walnut Hill Lane Suite 700
Dallas, TX 75231

www.lpc.com

SOUTHWEST MEDICAL
PLAZA II

5801 Oakbend Trail | Fort Worth, TX 76132

Outpatient Medical For Lease

6,080 - 12,250 SF



Property Overview

This off-campus Outpatient Medical Building is ideally positioned along the Chisholm Trail growth corridor. Residing minutes away from Texas Health Harris Methodist Southwest Hospital, TCU, and the Fort Worth Medical District, Southwest Medical Plaza II offers convenience for patients and staff.

Property Highlights

- Immediate access to the Chisholm Trail tollway and southwest Fort Worth growth corridor
- Convenient access to Texas Health Harris Methodist Southwest Hospital, Fort Worth Medical District, and TCU
- No Use Restrictions
- Free Parking for Patients & Staff
- Adjacent to Baylor Scott & White Surgicare

Availabilities	Size
Suite 140	6,170 SF
Suite 150	6,080 SF
Suite 140 & 150	12,250 SF

Peter Shaw

214.461.2302

PShaw@lpc.com

Douglas Maclay

214.461.2371

dmaclay@lpc.com

Elizabeth Madden

214.461.2366

emadden@lpc.com

Banks Newton

214.461.2388

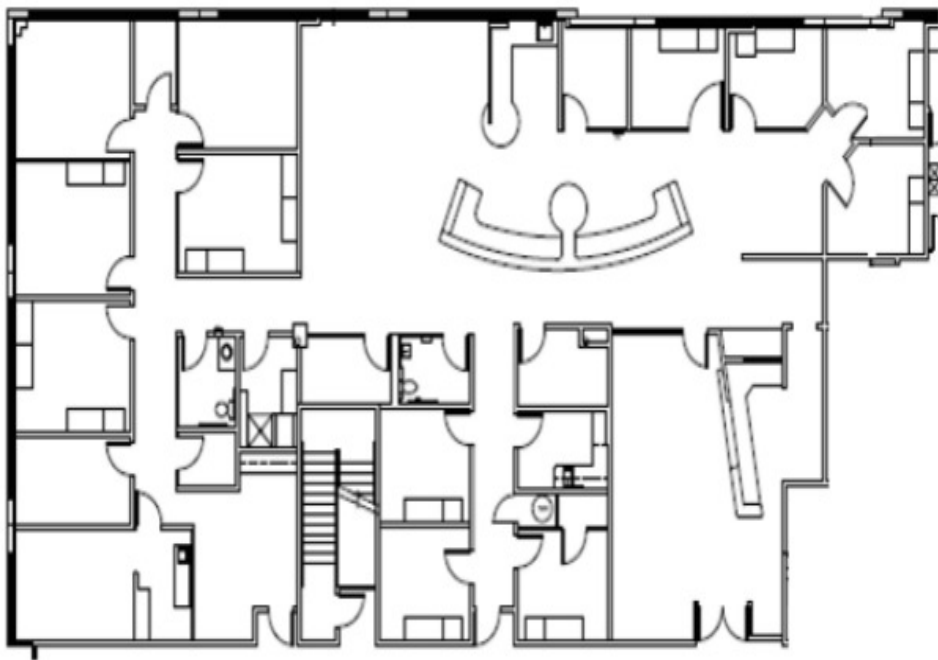
bnewton@lpc.com

Lincoln

SOUTHWEST MEDICAL PLAZA II

5801 Oakbend Trail | Fort Worth, TX 76132

Suite 140
6,170 SF



Suite	Size
Suite 140	6,170 SF

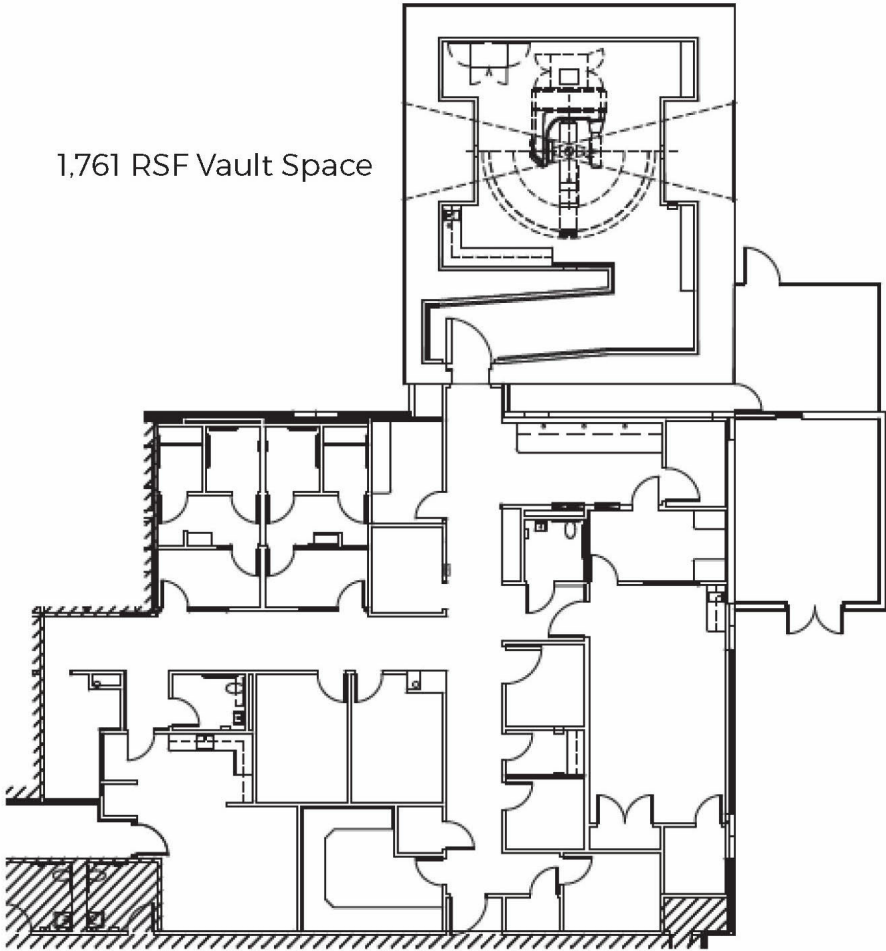
Peter Shaw 214.461.2302 PShaw@lpc.com	Douglas Maclay 214.461.2371 dmaclay@lpc.com	Elizabeth Madden 214.461.2366 emadden@lpc.com	Banks Newton 214.461.2388 bnewton@lpc.com
----------------------------------------------------	----------------------------------------------------------	------------------------------------------------------------	--------------------------------------------------------

Lincoln

SOUTHWEST MEDICAL
PLAZA II

5801 Oakbend Trail | Fort Worth, TX 76132

Suite 150
6,080 SF



Suite	Size
Suite 150	6,080 SF

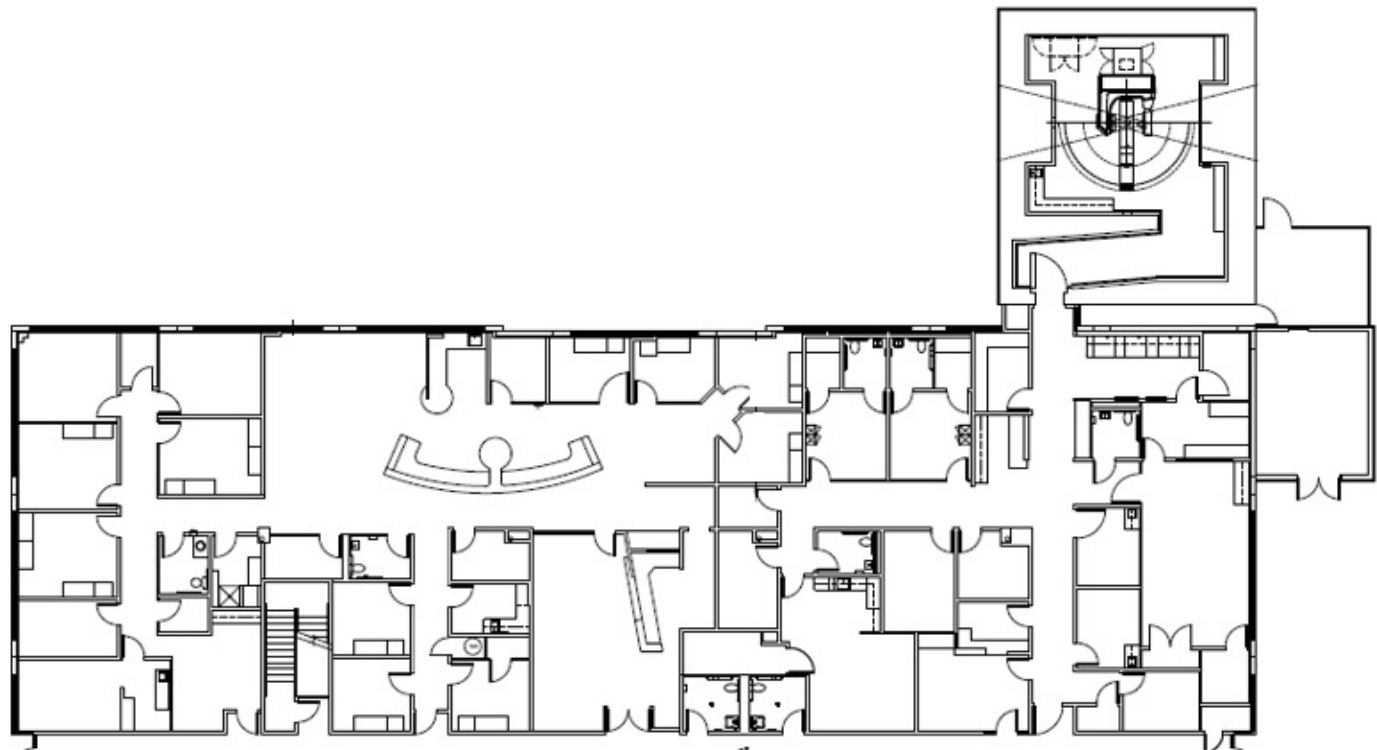
Peter Shaw 214.461.2302 PShaw@lpc.com	Douglas Maclay 214.461.2371 dmaclay@lpc.com	Elizabeth Madden 214.461.2366 emadden@lpc.com	Banks Newton 214.461.2388 bnewton@lpc.com
----------------------------------------------------	----------------------------------------------------------	------------------------------------------------------------	--------------------------------------------------------

Lincoln

SOUTHWEST MEDICAL PLAZA II

5801 Oakbend Trail | Fort Worth, TX 76132

Suite 140 & 150
12,250 SF



Suite	Size
Suite 140 & 150	12,250 SF

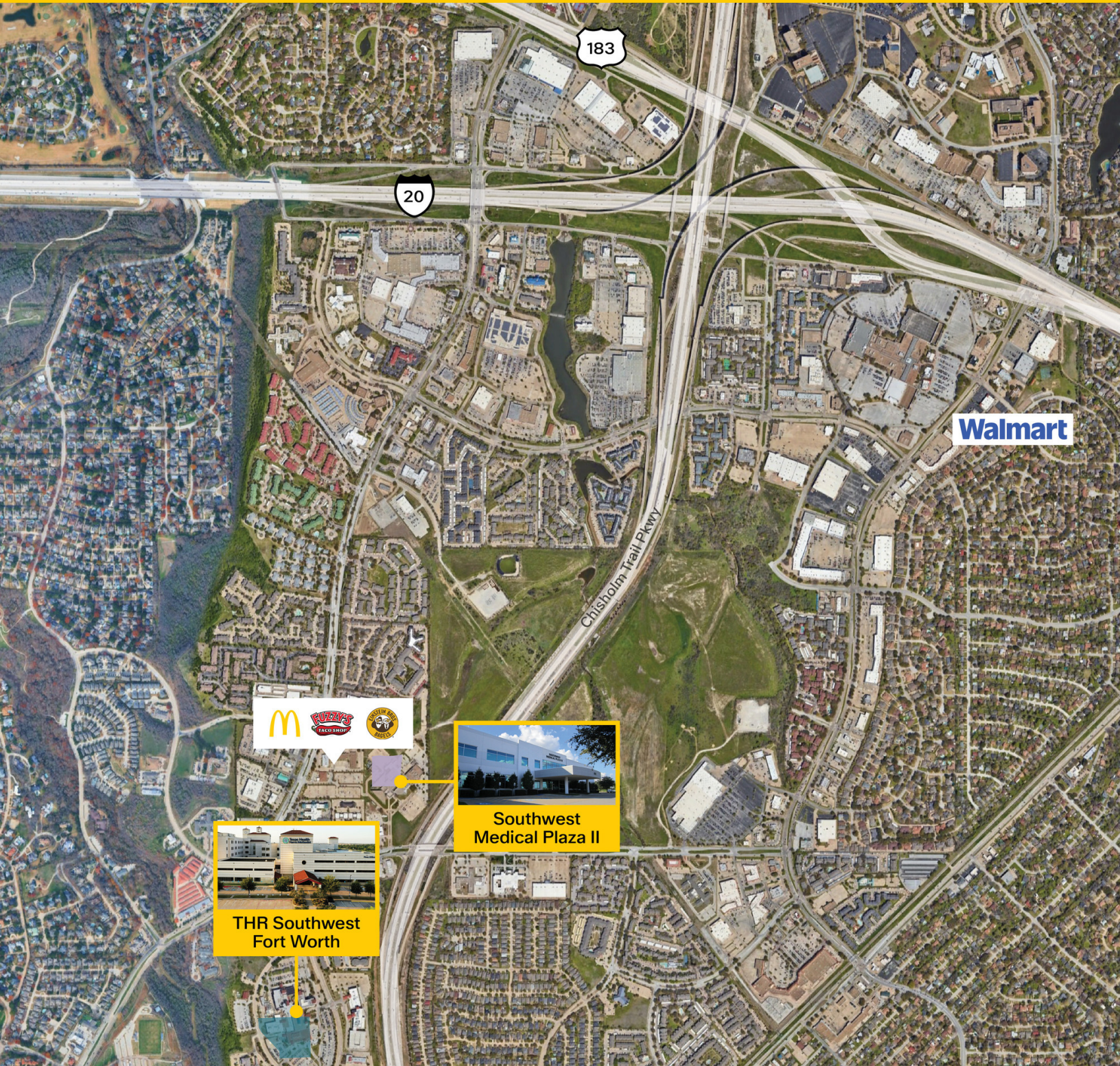
Peter Shaw 214.461.2302 PShaw@lpc.com	Douglas Maclay 214.461.2371 dmaclay@lpc.com	Elizabeth Madden 214.461.2366 emadden@lpc.com	Banks Newton 214.461.2388 bnewton@lpc.com
----------------------------------------------------	----------------------------------------------------------	------------------------------------------------------------	--------------------------------------------------------

Lincoln

SOUTHWEST MEDICAL PLAZA II

5801 Oakbend Trail | Fort Worth, TX 76132

Nearby Amenities



Peter Shaw

214.461.2302
PShaw@lpc.com

Douglas Maclay

214.461.2371
dmaclay@lpc.com

Elizabeth Madden

214.461.2366
emadden@lpc.com

Banks Newton

214.461.2388
bnewton@lpc.com

Lincoln



SOUTHWEST MEDICAL PLAZA II

Healthpeak® | **DOC
LISTED
NYSE**

5801 Oakbend Trail
Fort Worth, TX 76132

Leasing Information:
214.461.2383

Peter Shaw
214.461.2302
PShaw@lpc.com

Douglas Maclay
214.461.2371
dmaclay@lpc.com

Elizabeth Madden
214.461.2366
emadden@lpc.com

Banks Newton
214.461.2388
bnewton@lpc.com

Lincoln

Lincoln Property Company
8140 Walnut Hill Lane Suite 700
Dallas, TX 75231

www.lpc.com