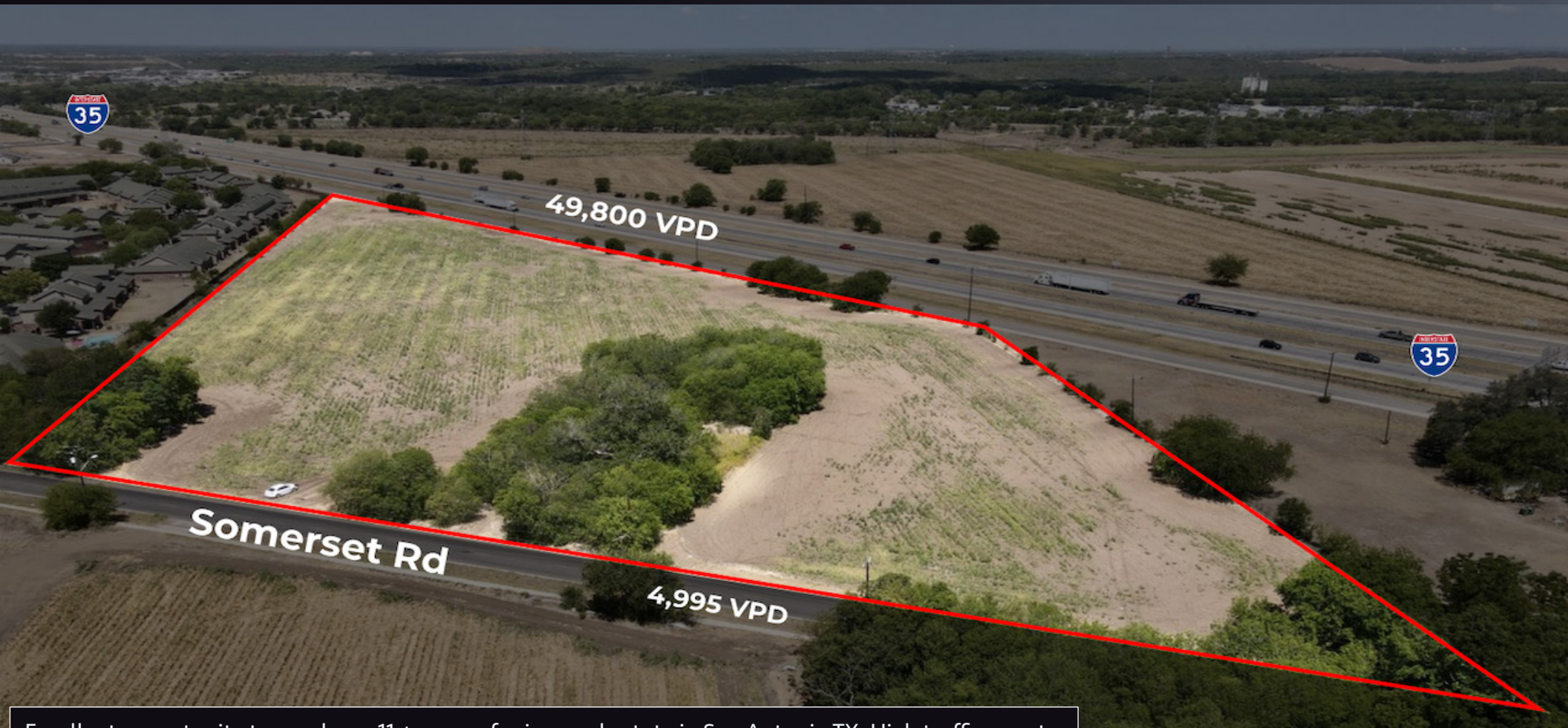


11± Acres on IH-35 S, San Antonio TX



Excellent opportunity to purchase 11 ± acres of prime real estate in San Antonio TX. High traffic counts, high visibility and down the street from Walmart, Southpark Mall and adjacent to a Multi-Family development. 1,100 ± Linear ft on Interstate Highway 35 S and 696 ± ft on Somerst Rd. Perfect site for a single or multi-family development. Electricity, water and sewer available.

EXCLUSIVELY MARKETING BY

Uri Uriah | [210.315.8885](tel:210.315.8885) | uri@uriahrealestate.com

URIAHREALESTATE.COM

URIAH
REAL ESTATE ORGANIZATION LLC

EXCLUSIVELY MARKETED BY

Uri Uriah

210.315.8885

uri@uriahrealestate.com

Uriah Real Estate Organization

San Antonio

830-600-LAND(5263)

1008 Hoefgen Ave

San Antonio, TX 78210

Uriah Real Estate Organization

Austin

737-773-LAND(5263)

360 Nueces #3801

Austin, TX 78701

URIAHREALSTATE.COM

URIAH
REAL ESTATE ORGANIZATION LLC

1

EXECUTIVE
SUMMARY

Property Overview

Property Highlights

Property Site Outline

Nearby Amenities

Inside Pictures

2

MARKET
OVERVIEW

San Antonio, Texas

Location Attractions

Demographics



1

EXECUTIVE
SUMMARY

Property Overview

ASKING PRICE:

CALL BROKER FOR DETAILS

LOT SIZE:

11 ± AC

ZONING:

R-4

FRONTAGE:

1,100+/- LINEAR FT ON
696 ± LINEAR FT ON SOMERSET RD

UTILITIES:

ALL ON SITE

The information contained herein was obtained from sources believed reliable: However, Uriah Real Estate Organization LLC makes no guarantees, warranties, or representations as to the completeness or accuracy thereof. The presentation of this property is submitted subject to errors, change or price, or conditions, prior to sale or lease, or withdrawal without notice.

CONTACT US



Property Highlights

- NEAR SOUTH PARK MALL, WALLMART, JEEP CRYSLAR DODGE RAM

- Situated on Somerset Rd and Interstate Highway 35

- Single Family Development

- Lot Size: 11 ± Acres

The information contained herein was obtained from sources believed reliable: However, Uriah Real Estate Organization LLC makes no guarantees, warranties, or representations as to the completeness or accuracy thereof. The presentation of this property is submitted subject to errors, change or price, or conditions, prior to sale or lease, or withdrawal without notice.

Nearby Amenities



Property Site Outline



Additional Land
For Sale

49,016 VPD

4,153 VPD

URIAH
REAL ESTATE ORGANIZATION LLC

UNDER CONTRACT

CHRYSLER
Jeep
DODGE
RAM

V
VALERO

SOMERSET RD

INTERSTATE
35

Property Site



Additional Land For Sale



49,016 VPD



11 ± ACRES

4,753 VPD

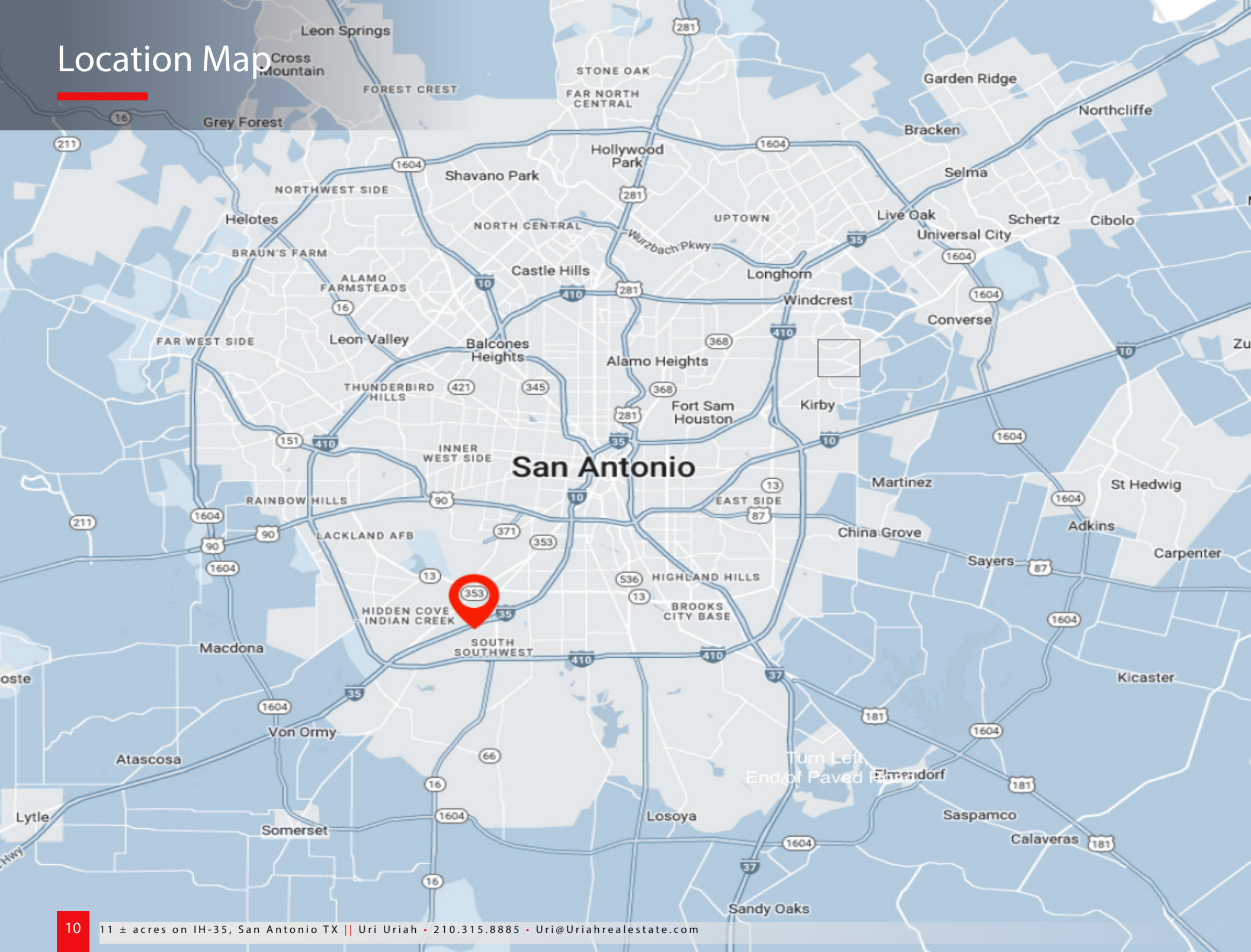
SOMERSET RD

An aerial photograph showing a multi-lane highway running vertically through the center. To the left of the highway are large, flat, brownish fields. To the right, there is a residential development with many houses, followed by more fields. A red rectangular overlay is positioned on the left side of the image, containing a white number '2'.

2

MARKET
OVERVIEW

Location Map



EXCLUSIVELY MARKETED BY

Uri Uriah

210.315.8885

Uri@uriahrealestate.com

Uriah Real Estate Organization

San Antonio

830-600-LAND(5263)

1008 Hoefgen Ave

San Antonio, TX 78210

Uriah Real Estate Organization

Austin

737-773-LAND(5263)

360 Nueces #3801

Austin, TX 78701

URIAHREALSTATE.COM



CONFIDENTIALITY AND DISCLAIMER

The information contained in the following Marketing Brochure is proprietary and strictly confidential. It is intended to be reviewed only by the party receiving it from Uriah Real Estate and should not be made available to any other person or entity without the written consent of Uriah Real Estate. This Marketing Brochure has been prepared to provide summary, unverified information to prospective purchasers, and to establish only a preliminary level of interest in the subject property. The information contained herein is not a substitute for a thorough due diligence investigation. Uriah Real Estate has not made any investigation, and makes no warranty or representation, with respect to the income or expenses for the subject property, the future projected financial performance of the property, the size and square footage of the property and improvements, the presence or absence of contaminating substances, PCB's or asbestos, the compliance with State and Federal regulations, the physical condition of the improvements thereon, or the financial condition or business prospects of any tenant, or any tenant's plans or intentions to continue its occupancy of the subject property. The information contained in this Marketing Brochure has been obtained from sources we believe to be reliable; however, Uriah Real Estate has not verified, and will not verify, any of the information contained herein, nor has Uriah Real Estate conducted any investigation regarding these matters and makes no warranty or representation whatsoever regarding the accuracy or completeness of the information provided. All potential buyers must take appropriate measures to verify all of the information set forth herein. © 2022 Uriah Real Estate. All rights reserved.

SPECIAL COVID-19 NOTICE

All potential buyers are strongly advised to take advantage of their opportunities and obligations to conduct thorough due diligence and seek expert opinions as they may deem necessary, especially given the unpredictable changes resulting from the continuing COVID-19 pandemic. Uriah Real Estate has not been retained to perform, and cannot conduct, due diligence on behalf of any prospective purchaser. Uriah Real Estate's principal expertise is in marketing investment properties and acting as intermediaries between buyers and sellers. Uriah Real Estate and its investment professionals cannot and will not act as lawyers, accountants, contractors, or engineers. All potential buyers are admonished and advised to engage other professionals on legal issues, tax, regulatory, financial, and accounting matters, and for questions involving the property's physical condition or financial outlook. Projections and pro forma financial statements are not guarantees and, given the potential volatility created by COVID-19, all potential buyers should be comfortable with and rely solely on their own projections, analyses, and decision-making.

NON-ENDORSEMENT NOTICE

Uriah Real Estate is not affiliated with, sponsored by, or endorsed by any commercial tenant or lessee identified in this marketing package. The presence of any corporation's logo or name is not intended to indicate or imply affiliation with, or sponsorship or endorsement by, said corporation of Uriah Real Estate, its affiliates or subsidiaries, or any agent, product, service, or commercial listing of Uriah Real Estate, and is solely included for the purpose of providing tenant lessee information about this listing to prospective customers.