

**LEAWOOD CORPORATE MANOR II 4707 College Blvd  
OFFICE SPACE AVAILABILITY  
SW CORNER COLLEGE & ROE**

**FOR LEASE --\$550 per month**

**24/7 access**

**Suite 207**

**Single Office with Exterior Window**

**Approximately 215 rsf**

Establish your office in one of these two fine, superb office buildings with courtyards, interior atriums with lots of greenery, interior skylights and very efficient layouts. Heated & cooled 24 hours a day by separate roof top units. Adequate parking available. Fiber Optics by local carriers plus antenna rooftop access is available. Join our quality, professional tenants who have leased space for years with us in the buildings. 5.5 cars per 1,000 sf leased parking ratio. Professionally managed by Colliers International and Leased by Max Wuellner, LLC

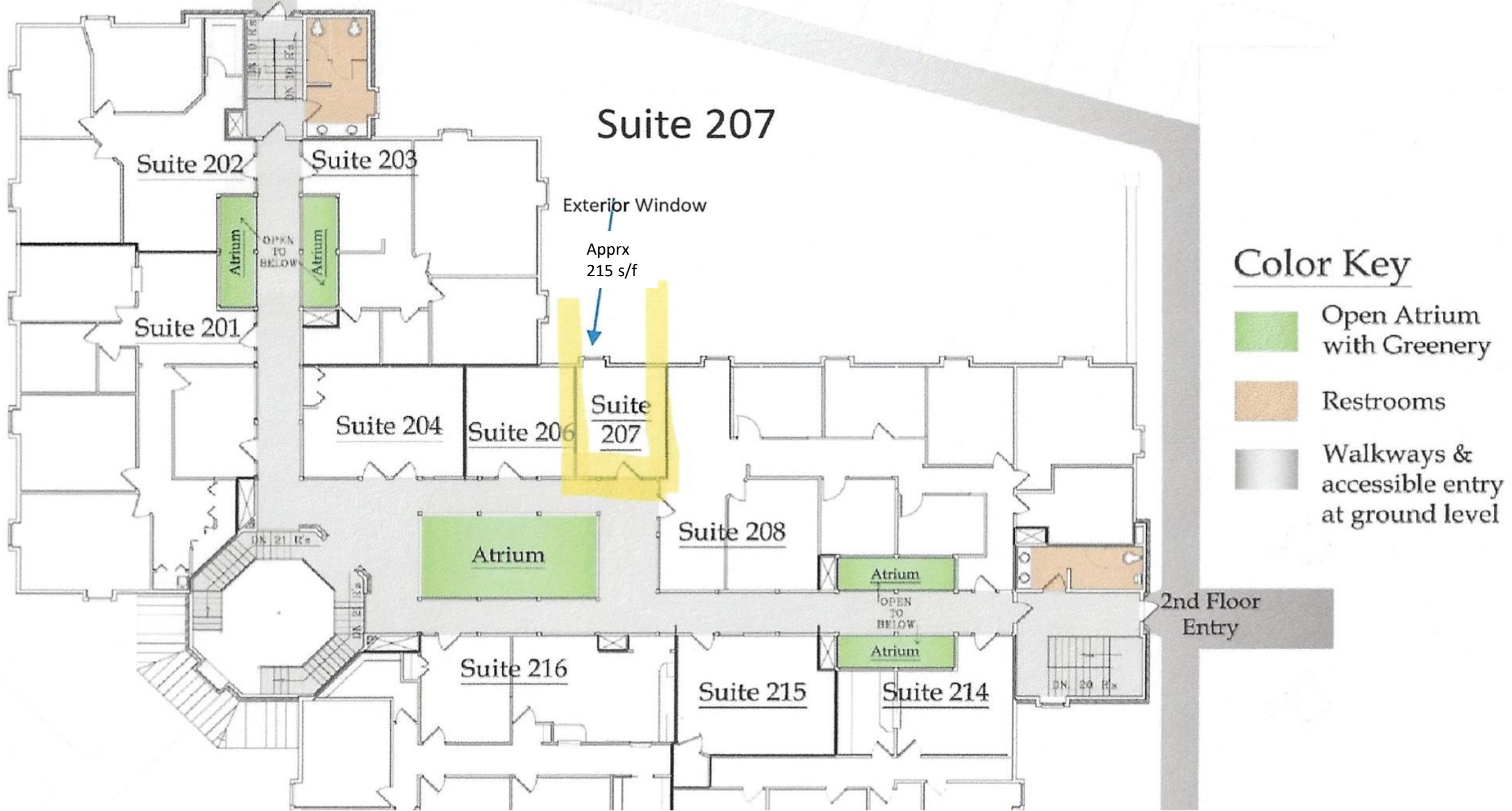


The Gateway to  
Leawood

**Contact Max Wuellner, LLC**  
Commercial Real Estate Services  
13309 w 172<sup>nd</sup> St  
Overland Park, KS 66221  
913-226-5240  
[maxwuellner@gmail.com](mailto:maxwuellner@gmail.com)



4707 College Blvd. Leawood, Ks 66211






Suite 207

Exterior Window

Apprx  
215 s/f

**Color Key**

-  Open Atrium with Greenery
-  Restrooms
-  Walkways & accessible entry at ground level

2nd Floor Entry