

# TURNPIKE MALL

10-42 Whitten Road, Augusta, Maine

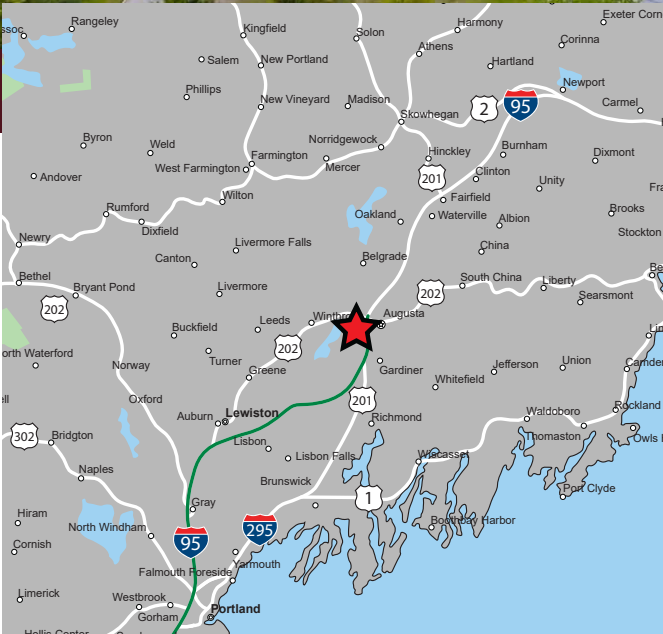
NEW DEALS WITH BURLINGTON & BOOT BARN



AVAILABLE FOR LEASE

## PROPERTY HIGHLIGHTS

- » 2,515 SF up to 32,965 SF Available For Lease
- » Join Recently Signed Burlington & Boot Barn
- » Conveniently Located at Exit 109 off I-95
- » Excellent Visibility & Access
- » Dominant Regional Trade Area
- » Strong Co-Tenancy with Burlington, Ocean State Job Lot, Petco, Texas Roadhouse, Boot Barn, ConvenientMD, Hobby Lobby and Harbor Freight Tools



P 781.849.9010 + F 781.849.9050 + [www.easternretail.com](http://www.easternretail.com)



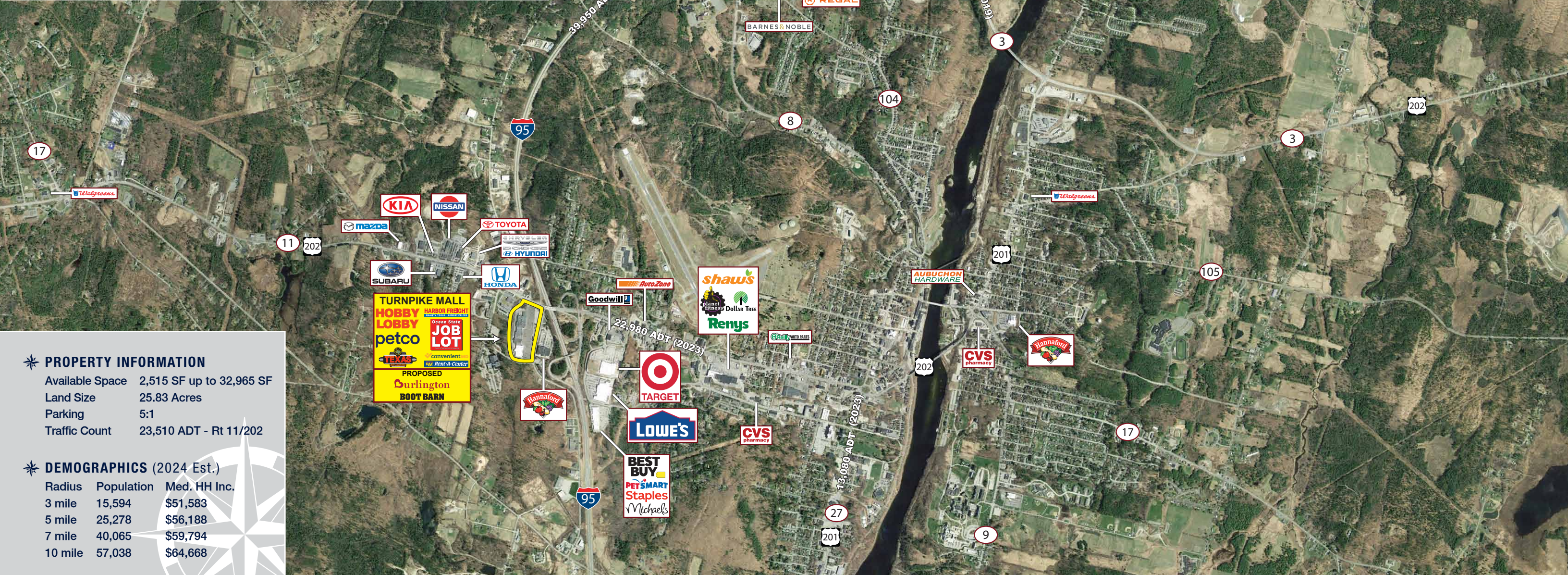
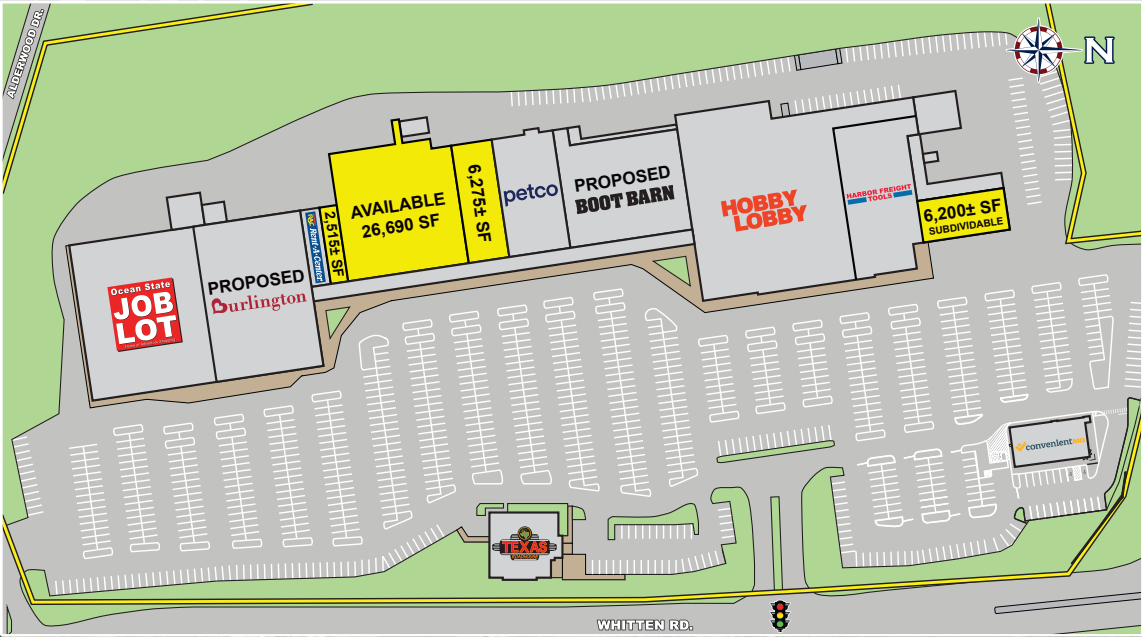
**EASTERN**  
RETAIL PROPERTIES

**SUNEQUITY**  
PARTNERS



# TURNPIKE MALL

10-42 Whitten Road, Augusta, Maine



✦ **PROPERTY INFORMATION**

|                 |                          |
|-----------------|--------------------------|
| Available Space | 2,515 SF up to 32,965 SF |
| Land Size       | 25.83 Acres              |
| Parking         | 5:1                      |
| Traffic Count   | 23,510 ADT - Rt 11/202   |

✦ **DEMOGRAPHICS (2024 Est.)**

| Radius  | Population | Med. HH Inc. |
|---------|------------|--------------|
| 3 mile  | 15,594     | \$51,583     |
| 5 mile  | 25,278     | \$56,188     |
| 7 mile  | 40,065     | \$59,794     |
| 10 mile | 57,038     | \$64,668     |





## Turnpike Mall - 10-42 Whitten Road, Augusta, Maine



FOR MORE INFORMATION CONTACT:

**Mike Hotarek**

781.849.9017

mhotarek@easternretail.com

**Andrew Bonica**

781.849.9011

abonica@easternretail.com

**Joe Morrison**

781.264.6225

jmorrisson@easternretail.com

P 781.849.9010 + F 781.849.9050 + [www.easternretail.com](http://www.easternretail.com) + 25 Braintree Hill Office Park, Suite 404 + Braintree, MA 02184

The information above has been obtained from sources believed reliable. While we do not doubt its accuracy, we have not verified it and make no guarantee, warranty or representation about it. It is your responsibility to independently confirm its accuracy and completeness. Any projections, opinions, assumptions or estimates used are for example only and do not represent the current or future performance of the property. The value of this transaction to you depends on tax and other factors, which should be evaluated by your tax and financial advisors. You and your advisors should conduct a careful, independent investigation of the property to determine to your satisfaction, the suitability of the property for your needs.