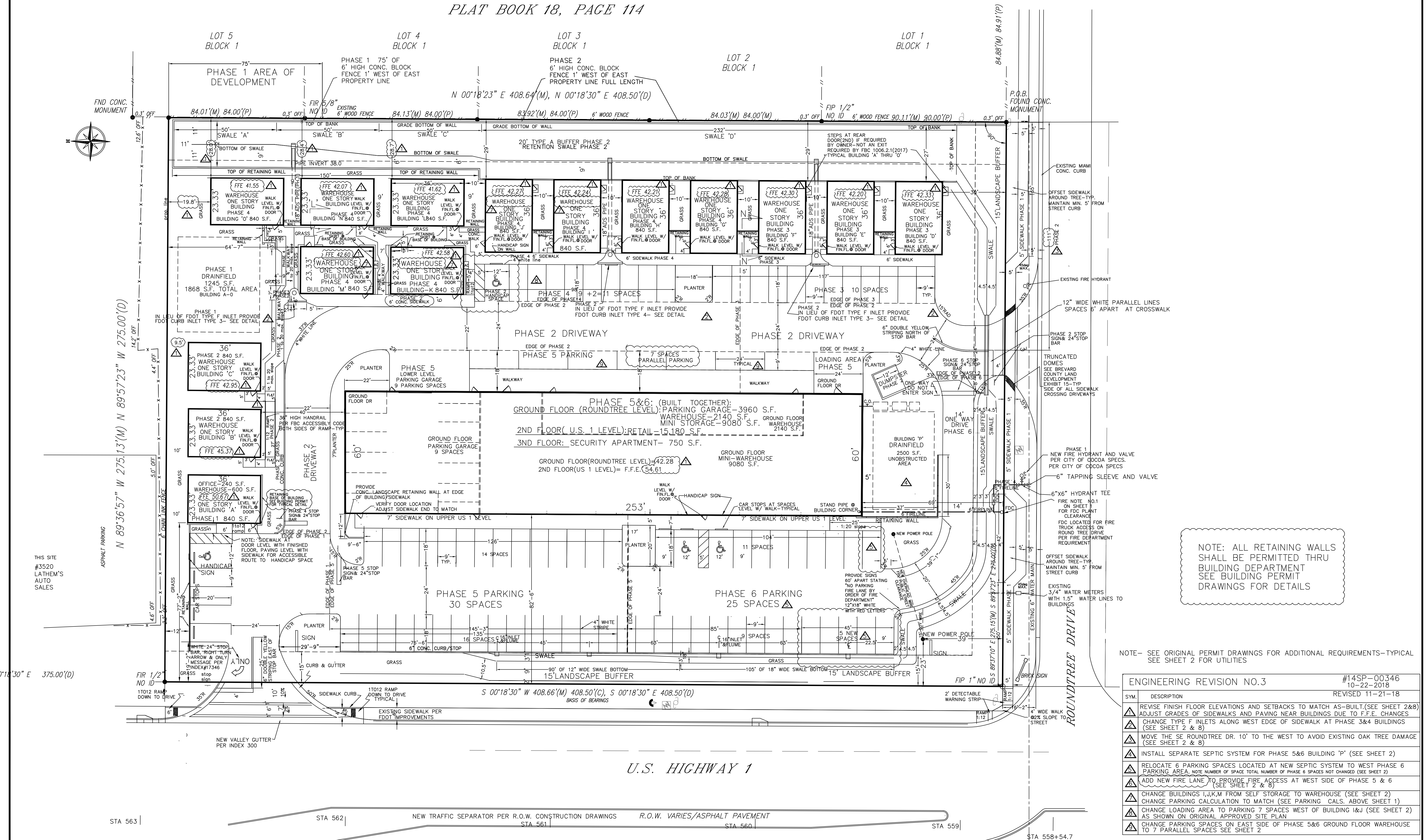


PARKCHESTER UNIT No. 1
PLAT BOOK 18, PAGE 114



NOTE: ALL RETAINING WALLS SHALL BE PERMITTED THRU BUILDING DEPARTMENT SEE BUILDING PERMIT DRAWINGS FOR DETAILS

NOTE- SEE ORIGINAL PERMIT DRAWINGS FOR ADDITIONAL REQUIREMENTS-TYPICAL SEE SHEET 2 FOR UTILITIES

ENGINEERING REVISION NO.3		#14SP-00346
		REVISED 11-21-18
△	REVISE FINISH FLOOR ELEVATIONS AND SETBACKS TO MATCH AS-BUILT.(SEE SHEET 2&8)	
△	ADJUST GRADES OF SIDEWALKS AND PAVING NEAR BUILDINGS DUE TO F.F.E. CHANGES	
△	CHANGE TYPE F INLETS ALONG WEST EDGE OF SIDEWALK AT PHASE 3&4 BUILDINGS (SEE SHEET 2 & 8)	
△	MOVE THE SE ROUNDTREE DR. 10' TO THE WEST TO AVOID EXISTING OAK TREE DAMAGE (SEE SHEET 2 & 8)	
△	INSTALL SEPARATE SEPTIC SYSTEM FOR PHASE 5&6 BUILDING 'P' (SEE SHEET 2)	
△	RELOCATE 6 PARKING SPACES LOCATED AT NEW SEPTIC SYSTEM TO WEST PHASE 6 PARKING AREA. NOTE NUMBER OF SPACE TOTAL NUMBER OF PHASE 6 SPACES NOT CHANGED (SEE SHEET 2)	
△	ADD NEW FIRE LANE TO PROVIDE FIRE ACCESS AT WEST SIDE OF PHASE 5 & 6 (SEE SHEET 2 & 8)	
△	CHANGE BUILDINGS I,J,K,M FROM SELF STORAGE TO WAREHOUSE (SEE SHEET 2)	
△	CHANGE PARKING CALCULATION TO MATCH (SEE PARKING CALS. ABOVE SHEET 1)	
△	CHANGE LOADING AREA TO PARKING 7 SPACES WEST OF BUILDING I&J (SEE SHEET 2) AS SHOWN ON ORIGINAL APPROVED SITE PLAN	
△	CHANGE PARKING SPACES ON EAST SIDE OF PHASE 5&6 GROUND FLOOR WAREHOUSE TO 7 PARALLEL SPACES SEE SHEET 2	

U.S. HIGHWAY 1

REVISIONS		
10-20-14 COMMENTS	6-24-15 ENGINEERING REVISION NO.1.	10-22-18 ENGINEERING REVISION NO.3
12-26-14	7-20-15 FDOT	12-28-16 ENGINEERING REVISION 2 COMMENTS
1-22-15	9-15-15 FDOT	11-23-16 ENGINEERING REVISION 2
2-16-15	10-8-15 FDOT	12-5-18 ENGINEERING REVISION 3 COMMENTS
	10-13-15 FDOT	12-28-18 ENGINEERING REVISION 3 COMMENTS BLD 'A' RETAINING SKIRT WALL NOTE

SCALE 1"=20'	JOB NUMBER:1406	DATE:4-14-14	PHASE 1-6 SITE PLAN FOR US 1 BUSINESS CENTER COCOA, FLORIDA	WILLIAM H. STEPHENSON P.E. 1207 WINDING HEAD ROAD, ROCKLEDGE, FL 32955 (321) 961-8182 P.E. NO. 21639
--------------	-----------------	--------------	---	--

STA 563	STA 562	STA 561	STA 560	STA 559	STA 558+54.7
---------	---------	---------	---------	---------	--------------