

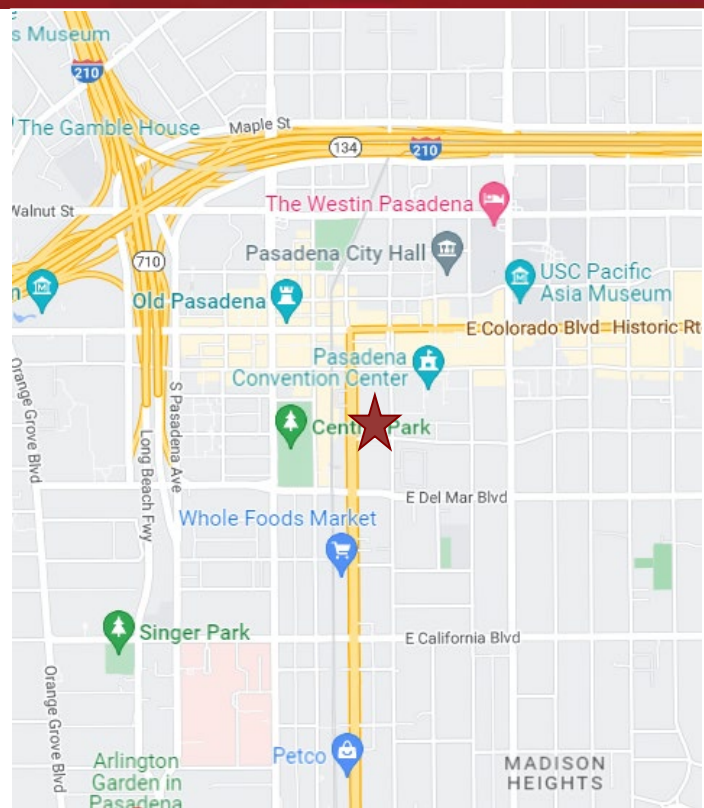
OFFICE FOR SUBLEASE



150 S. ARROYO PARKWAY, PASADENA, CA

FOR SUBLEASE

- AVAILABLE SPACE:** First Floor - Approximately 900 sq. ft. (Open area with one (1) private office.)
- LEASE RATE:** \$2.67 per sq. ft., Full Service Gross.
- AVAILABLE:** Immediately.
- SUBLEASE EXPIRATION:** April 30, 2025. (Longer term possible)
- PARKING:** Two (2) reserved parking spaces at no cost.
- AMENITIES:**
- * Lobby and elegant tenant improvements.
 - * Lots of light with numerous windows.
 - * State of the art security cameras and alarm system for lobby area.
 - * Walking distance to Houston's, Parkway Grill, Whole Foods, and Old Town Pasadena.
 - * Across the street from Gold Line Station.
 - * Easy access to 210 and 110 freeways.



For more Information, Contact:

Dan Alle

dalle@redstonecre.com

Lic. # No. 01017941

(626) 483-6358

Julie Alle

jalle@redstonecre.com

Lic. # No. 01889085

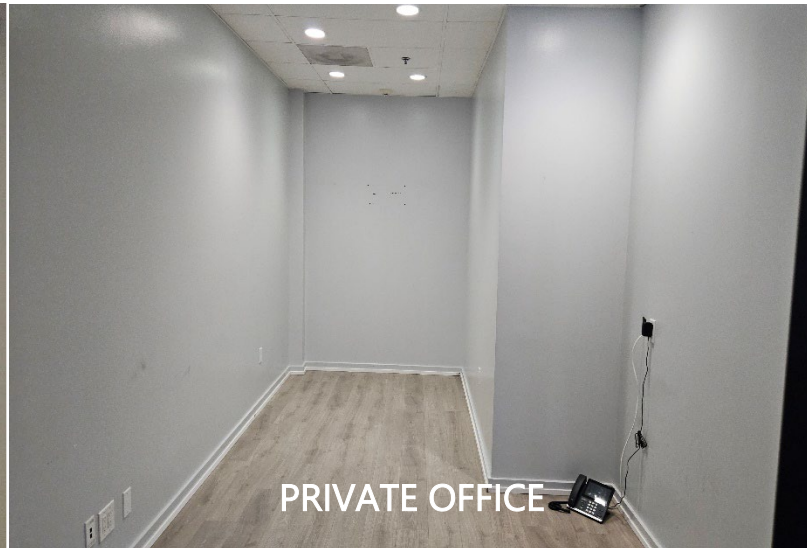
(626) 864-3927



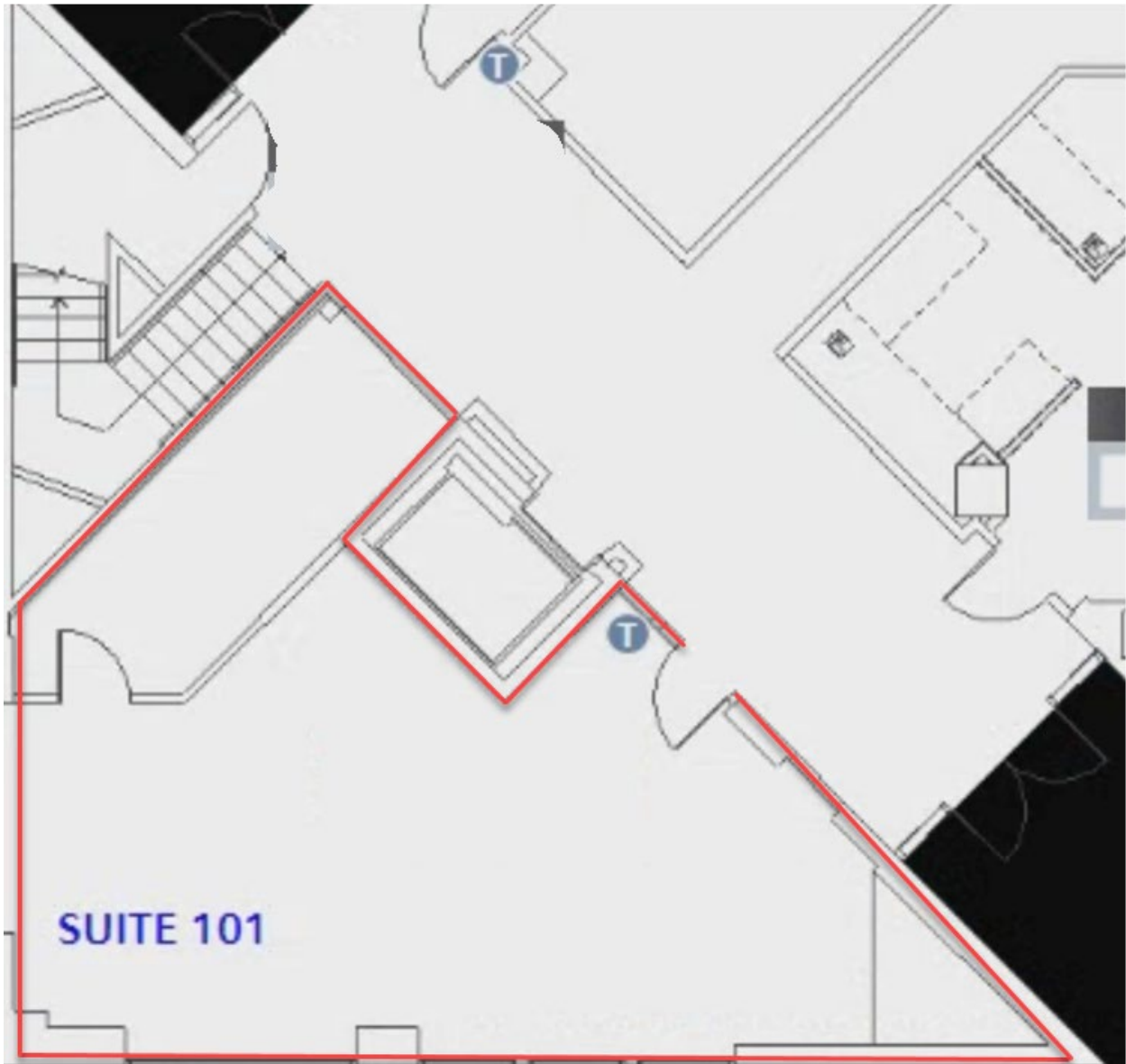
All information contained herein is from sources deemed reliable but has not been verified and is submitted without any warranty or representation, expressed or implied, as to its accuracy, and Redstone Commercial Real Estate, License #01525534, assumes no liability for errors or omissions of any kind, change of price, rental or other conditions, including, without limitation, prior sale, lease or financing or withdrawal without notice. This presentation is for information only and under no circumstances whatsoever is to be deemed a contract, note, memorandum or any other form of binding commitment.

150 S. ARROYO PARKWAY

SUITE 101 - INTERIOR PICTURES



150 S. ARROYO PARKWAY
SUITE 101



Amenity Map

