

Notes:

PARTITION LEGEND	
[Symbol]	EXISTING WALL, VERIFY CONSTRUCTION IN FIELD
[Symbol]	BRICK VENEER EXTERIOR WALL W/ MTL STUD BACK-UP
[Symbol]	CMU WALL
[Symbol]	INTERIOR PARTITION

FIRE EXTINGUISHER	
FE-1	SURFACE MOUNT FIRE EXTINGUISHER, J.L. INDUSTRIES COSMIX SX
FE-2	RECESSED FIRE EXTINGUISHER, 1-1/2" TRIM, J.L. INDUSTRIES COSMIX SX, CABINET #1826G17, MILL FINISH

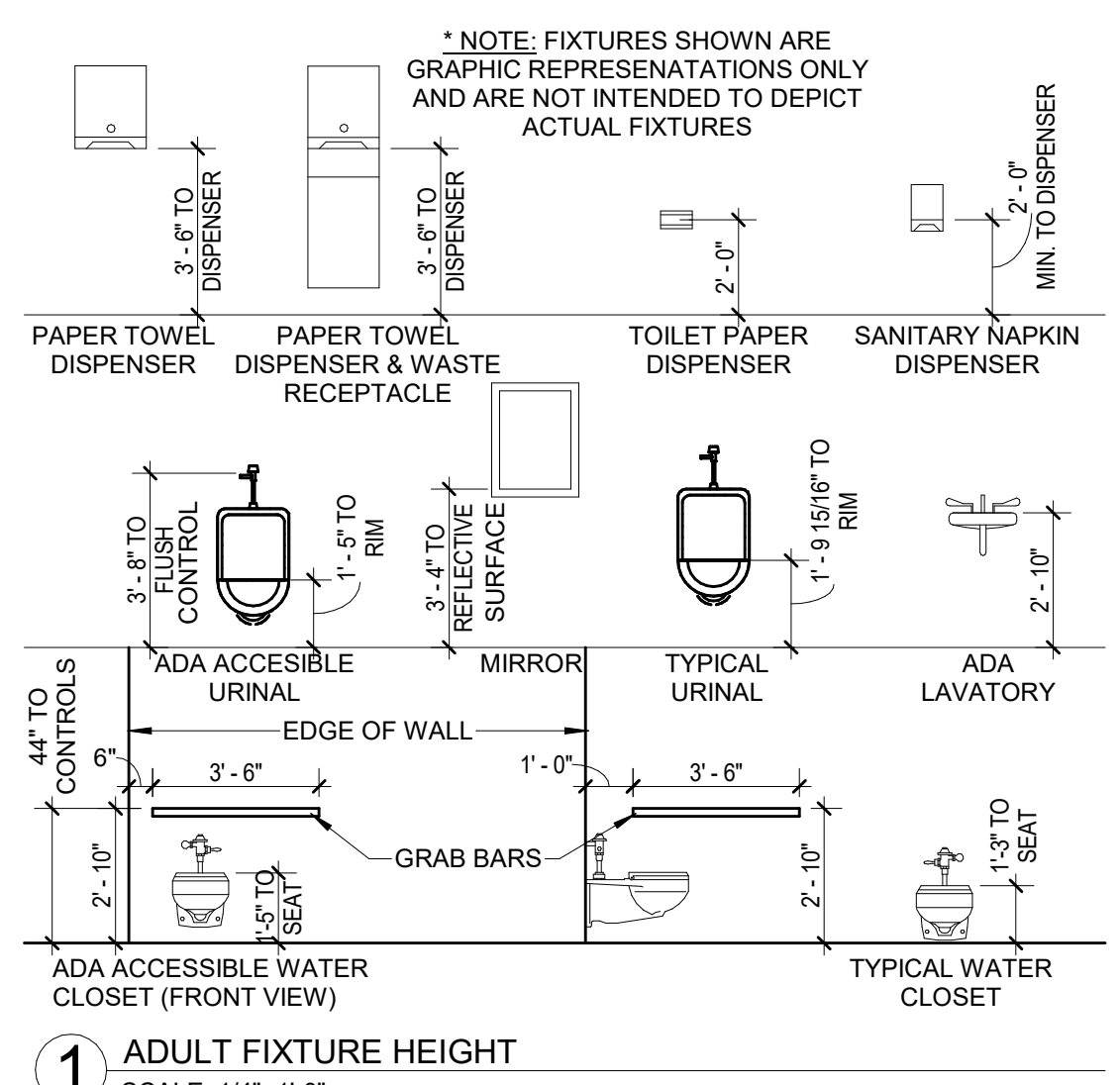
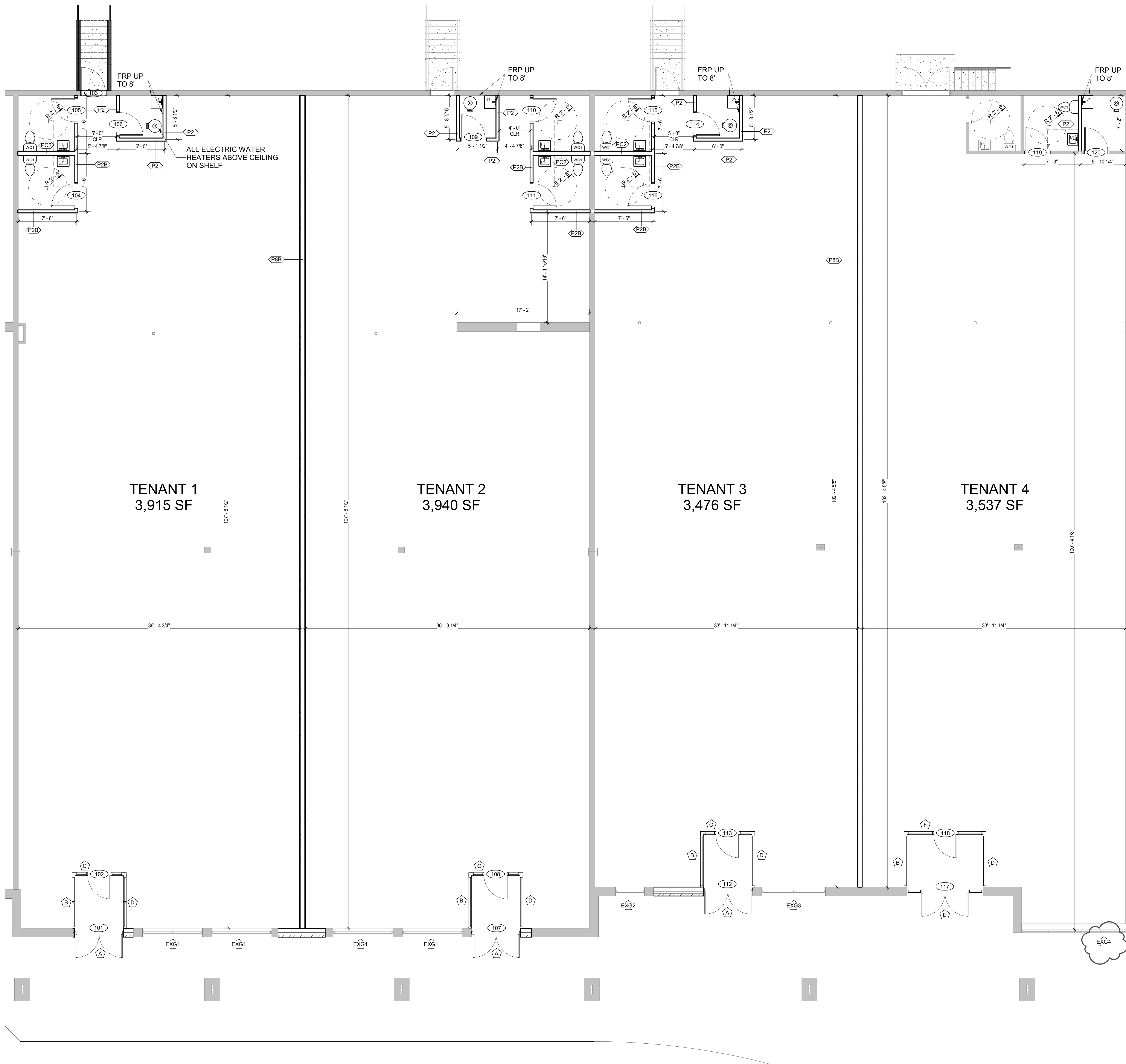
- PARTITION NOTES**
- ALL WALLS NOT KEYPED IN BY WALL TYPE DESIGNATION TO BE PARTITION "P2", TYP.
- DIMENSIONING NOTES**
- EXTERIOR MASONRY WALLS ARE DIMENSIONED TO THE FACE OF MASONRY
 - INTERIOR MASONRY WALLS ARE DIMENSIONED TO THE FACE OF MASONRY
 - WOOD FRAMED EXTERIOR WALLS ARE DIMENSIONED TO THE EXTERIOR FACE OF STUD.
 - INTERIOR PARTITIONS ARE DIMENSIONED TO THE CENTERLINE, UNLESS NOTED OTHERWISE.

PLUMBING FIXTURE LIST

L1: LAVATORY	ZURN "Z-5360" SINGLE HOLE WALL HUNG LAVATORY, 30X18", COLOR: WHITE, ADA
WC1: WATER MOUNTED TANK TYPE CLOSET	ZURN "Z5551K" FLOOR MOUNTED TANK TYPE TOILET, ADA
J1: JANITORS SINK	MUSTEE "63M" 24"x24"x12" FLOOR MOUNTED MOP SINK

BATHROOM ACCESSORIES

PTD: PAPER TOWEL DISPENSER / WASTE RECEPT. MODEL NO. "235"	BRADLEY RECESSED TOWEL DISPENSER / WASTE RECEPT. MODEL NO. "235"
TPD: TOILET PAPER DISPENSER	BRADLEY SURFACE MOUNTED TOILET PAPER DISPENSER MODEL NO. "5402"
ND: NAPKIN DISPOSAL	BRADLEY NAPKIN DISPOSAL MODEL NO. "4781-15" AND VENDOR MODEL NO. "428"
GB: GRAB BARS	1-1/2" DIA. 36" & 42" FRANKLIN BRASS "CENTURION" WITH PEENED AND BRIGHT SURFACE & CONCEALED MOUNTING



2 A.611- FIXTURE HEIGHT ELEVATIONS
SCALE: 1/4" = 1'-0"

1 ENLARGED FLOOR PLAN - TENANT 1 & 2
SCALE: 3/16" = 1'-0"

Architect's Stamp:

Project:
Goulds Plaza
 248-270 Great Rd
 Acton, MA 01720
Client:
Colonial Automotive Group
 171 Great Road, Acton, MA

Project #: 23017
Scale: As indicated
Issue: _____ **Date:** _____
 Permit Set _____ 07/14/2023

Revisions:	Date:
1 Revision 1	09/08/2023

Drawing Title:
PARTIAL FLOOR PLANS

Sheet Number:

A.111

MAUGEL DESTEFANO ARCHITECTS
 200 AVENUE ROAD, SUITE 200
 WILMINGTON, MA 01897
 978-456-2803
 MAUGEL.COM

THIS DOCUMENT IS THE PROPERTY OF MAUGEL DESTEFANO ARCHITECTS. IT IS TO BE USED ONLY FOR THE PROJECT AND SITE SPECIFICALLY IDENTIFIED HEREIN. ANY REUSE OR MODIFICATION OF THIS DOCUMENT WITHOUT THE WRITTEN PERMISSION OF MAUGEL DESTEFANO ARCHITECTS IS STRICTLY PROHIBITED.