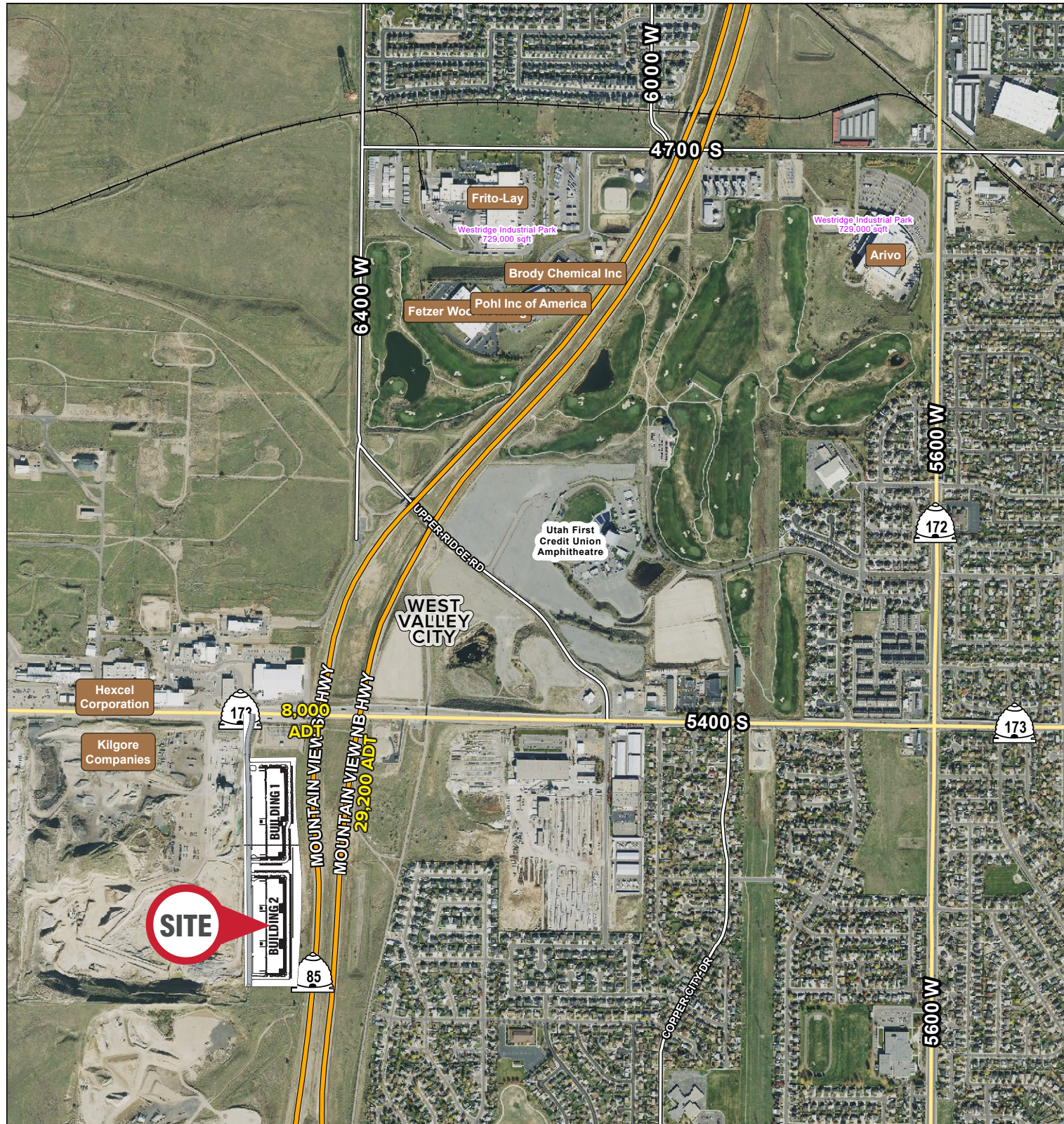


# MOCA MOUNTAIN VIEW BUSINESS PARK

6507 West 5400 South | West Valley City, UT 84118



# MOCA MOUNTAIN VIEW BUSINESS PARK

6507 West 5400 South | West Valley City, UT 84118



## Scan For 3D Walkthrough



## Property Highlights

- Total Available: 147,791 SF
- Divisible: 18,480-147,791 SF
- Office: BTS Class A Creative Office Space
- Eight (8) 14'x16' Grade Level Doors
- Forty-Six (46) 9'x10' Dock Doors
- Twenty-Six (26) - 45K LB Rated Air Bag Dock Levelers With 20" Steele Faced Bumper
- Dock Curtains Have MAX 100 Vinyl
- TS150 Dock Doors With R-14 Insulation Value. 3" Tracks With Heavy Duty Rollers, Track Guards On Every Overhead Door
- Clear Height: 32'
- 7" Concrete Slab Thickness
- Power: 3000 Amp 480/277 V | 3-Phase | 4-Wire (Expandable To 6000 Amp)
- Sixteen (16) Gas Forced Heaters
- Column Spacing: 56'x52'6"
- Speed Bay: 60'
- Building Depth: 165'
- Truck Court: 125'
- Truck Apron: 60'
- ESFR Sprinkled
- Roof: 60 Mil TPO Roof With R-30 Insulation & Solar Provision Installed In The Gear
- Galvanized Ceilings And Painted Walls For Ambient Lighting
- 279 Parking Stalls
- Construction Type: Precast Concrete Tilt 2" Insulated Panels
- Belt FM Global Compliant
- Project Acreage: 26.81 Acres
- Zoning: M - Manufacturing
- High-Image Corporate Business Park Environment
- Completion Date: August 2025
- Access: Easy Access To Mountain View Corridor (5400 South)

## Contact

**SKYLER PETERSON, SIOR**  
Executive Vice President  
m 801.656.7354  
speterson@legendcommercial.com

**TRE BOURDEAUX, SIOR**  
Vice President  
m 801.824.0397  
tbourdeaux@legendcommercial.com

**PARKER TAGGART**  
Senior Associate  
m 801.928.1815  
ptaggart@legendcommercial.com



## Contact

**SKYLER PETERSON, SIOR**  
Executive Vice President  
m 801.656.7354  
speterson@legendcommercial.com

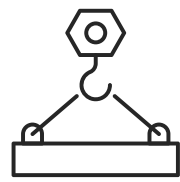
**TRE BOURDEAUX, SIOR**  
Vice President  
m 801.824.0397  
tbourdeaux@legendcommercial.com

**PARKER TAGGART**  
Senior Associate  
m 801.928.1815  
ptaggart@legendcommercial.com



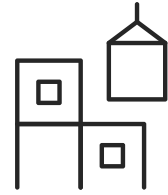
# MOCA MOUNTAIN VIEW BUSINESS PARK

6507 West 5400 South | West Valley City, UT 84118



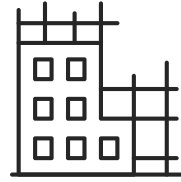
## Concrete Slab

7" Thick



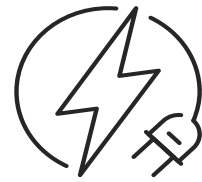
## Roof

60 Mil TPO Roof  
With R-30 Insulation  
& Solar Provision  
Installed In The Gear



## Construction Type

Precast Concrete  
Tilt 2" Insulated  
Panels



## Power

3000 Amp Expandable  
to 6000 Amp 480/277 V  
| 3-Phase | 4-Wire



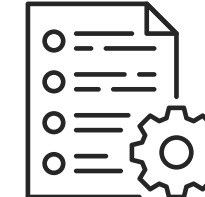
## Sprinkled

ESFR



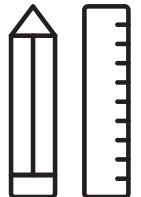
## Belt FM

Global compliant



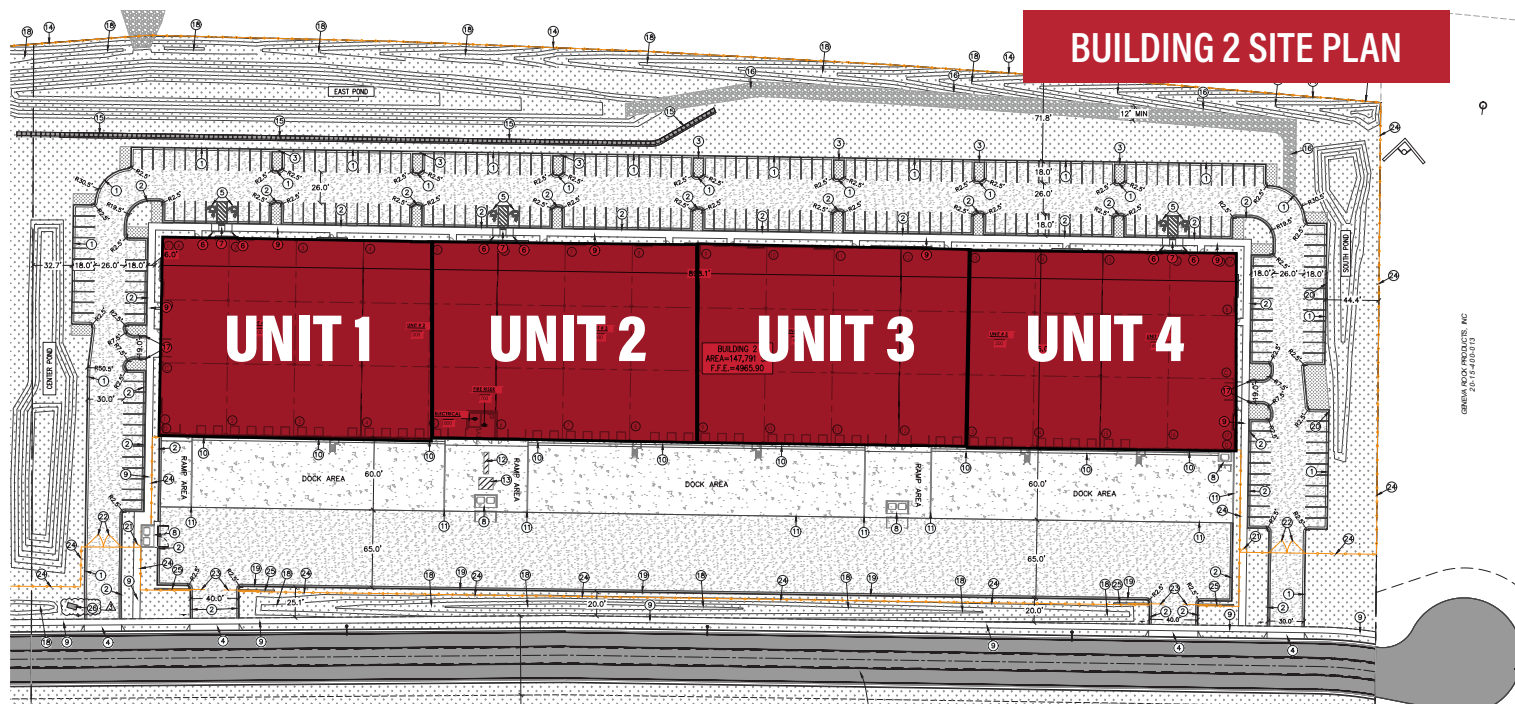
## Zoning

M-Manufacturing

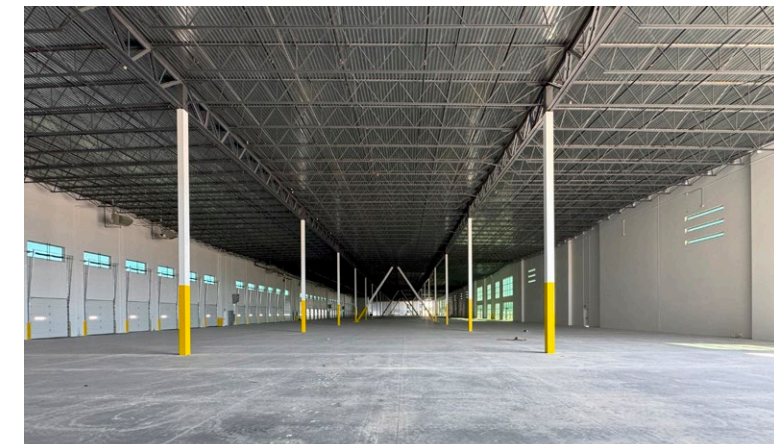


## Clear Height

32'



Unit #	SF
100	36,947
200	36,947
300	36,947
400	36,947



### Contact

**SKYLER PETERSON, SIOR**  
Executive Vice President  
m 801.656.7354  
speterson@legendcommercial.com

**TRE BOURDEAUX, SIOR**  
Vice President  
m 801.824.0397  
tbourdeaux@legendcommercial.com

**PARKER TAGGART**  
Senior Associate  
m 801.928.1815  
ptaggart@legendcommercial.com



### Contact

**SKYLER PETERSON, SIOR**  
Executive Vice President  
m 801.656.7354  
speterson@legendcommercial.com

**TRE BOURDEAUX, SIOR**  
Vice President  
m 801.824.0397  
tbourdeaux@legendcommercial.com

**PARKER TAGGART**  
Senior Associate  
m 801.928.1815  
ptaggart@legendcommercial.com

