

# 10680 S AUTO MALL DRIVE

SANDY, UTAH 84070

88-KEY BRANDED  
HOSPITALITY ASSET ALONG  
I-15 IN THE SALT LAKE CITY  
SOUTH CORRIDOR



## PROPERTY SUMMARY

The Holiday Inn Express & Suites Sandy is an 88-key, upper-midscale hospitality asset strategically positioned within the Salt Lake City South submarket. Built in 1997 and renovated in 2006, the property operates under a nationally recognized IHG franchise, offering consistent brand performance and operational stability.

Situated on approximately 1.52 acres, the asset benefits from strong regional connectivity, proximity to major transportation corridors, and a high-traffic commercial node. The property caters to both business and leisure travelers, supported by a robust amenity package including a fitness center, business center, pool, and high-speed internet access.

This offering presents an opportunity to acquire a stabilized hospitality asset in a high-growth corridor within the Salt Lake metro, with continued upside through operational efficiencies and market growth.



**1.52 AC (±66,211 SF)**  
LAND AREA



**0.66 FAR**  
BUILDING FAR



**88**  
ROOMS



**3**  
STORIES



**93 SPACES (1.06/RM)**  
PARKING



**1997 / 2006**  
BUILT / RENOVATED

**Trent Bright**  
Lead Agent

(435) 820-6801  
trent@apex-cre.com  
UT License: 7961776

**Tyler Carlisle**  
Listing Specialist

(801) 833-2817  
tyler@apex-cre.com  
UT License: 13435653-SA00

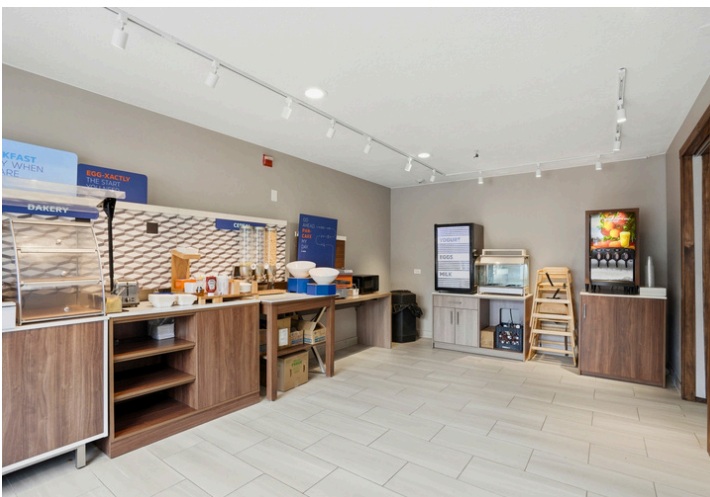
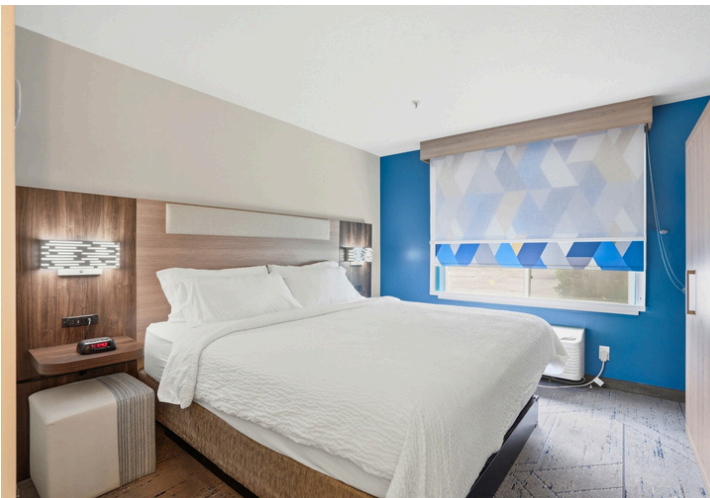
**Sheri Osborne**  
Buyer Specialist

(801) 884-8816  
sheri@apex-cre.com  
UT License: 223875-SA00

**APEX**

**10680** S Auto Mall Drive

**88-KEY BRANDED HOSPITALITY ASSET ALONG I-15 IN THE SALT LAKE CITY SOUTH CORRIDOR**



**Trent Bright**  
Lead Agent

(435) 820-6801  
trent@apex-cre.com  
UT License: 7961776

**Tyler Carlisle**  
Listing Specialist

(801) 833-2817  
tyler@apex-cre.com  
UT License: 13435653-SA00

**Sheri Osborne**  
Buyer Specialist

(801) 884-8816  
sheri@apex-cre.com  
UT License: 223875-SA00

**APEX**