



2401-2449 East Plaza Blvd. NATIONAL CITY, CA

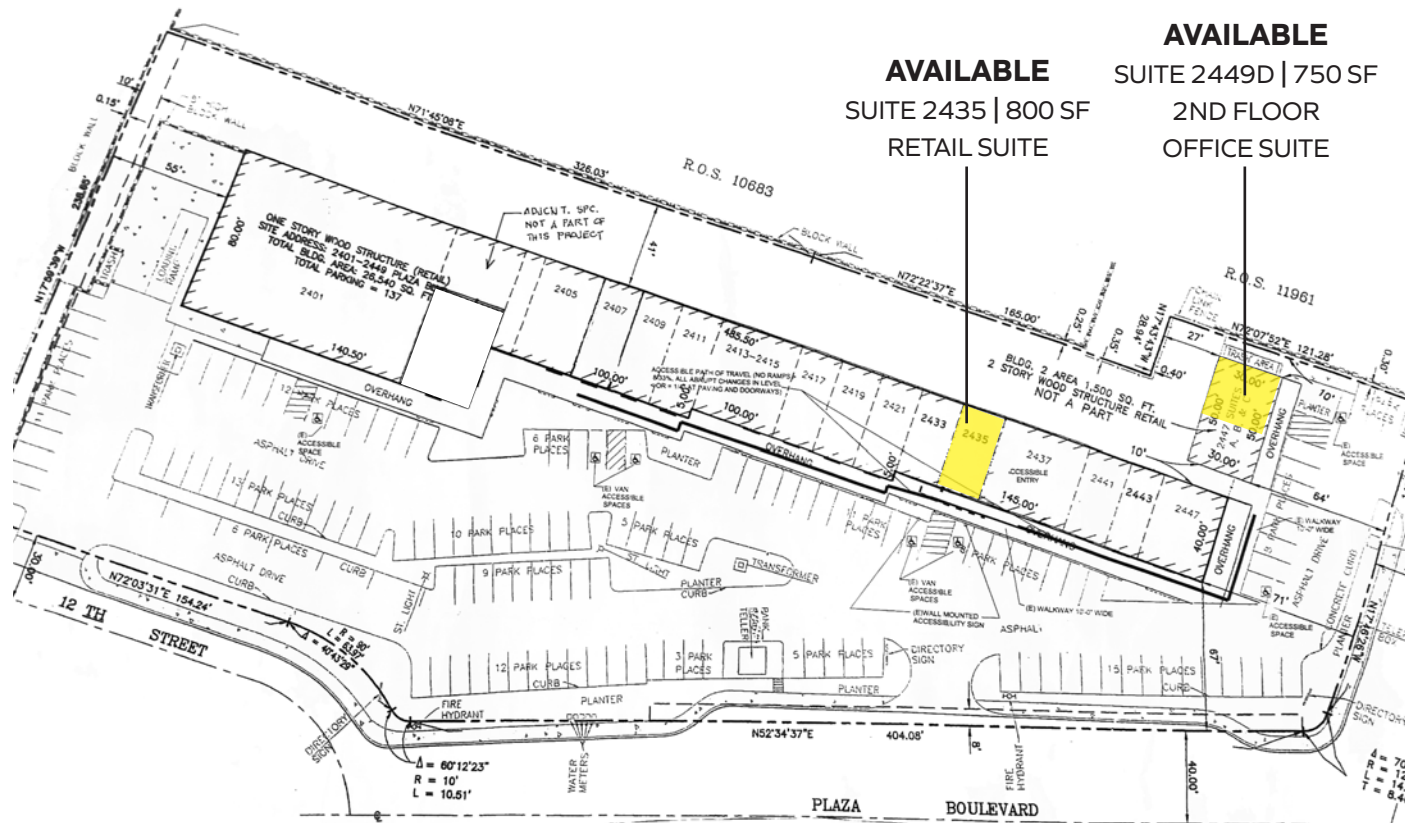
**TWO (2) SPACES FOR LEASE.
2435 E. PLAZA BLVD. - 800 SF
2449D E. PLAZA BLVD. - 750 SF (2ND FLOOR)**

HIGH VISIBILITY RETAIL CENTER AVAILABLE IN THE HEART OF NATIONAL CITY



Jeff Drew
858.523.2091
jdrew@retailinsite.net

Retail Insite | *Commercial Real Estate*
3565 7th Ave, San Diego, CA 92103
LIC# 01206760 · 858 523 2091 · retailinsite.net



AVAILABLE
SUITE 2435 | 800 SF
RETAIL SUITE

AVAILABLE
SUITE 2449D | 750 SF
2ND FLOOR
OFFICE SUITE

Property Features.

- + NWC of Plaza Blvd and Euclid Ave
- + Fully built-out retail/office suites
- + High traffic intersection (45,000 ADT)
- + Easy ingress/egress on Plaza Blvd, Euclid Ave, & 12th St.

The information above has been obtained from sources believed to be reliable. While we do not doubt its accuracy, we have not verified it and make no guarantee, warranty or representation about it. It is your responsibility to independently confirm its accuracy and completeness. Any projections, opinions, assumptions or estimates used are for example only and do not represent the current or future performance of the property.

NWC E. Plaza Blvd. & Euclid Ave.





SITE

**WELLS
FARGO
ATM**



Winchell's
Diner & Deli



AutoZone

E 12th St

E Plaza Blvd 29,900 ADT

Euclid Ave 15,100 ADT





2401-2449 E. Plaza Blvd., National City, CA 91950

POPULATION

	1 mile	3 miles	5 miles
Total Population	33,585	222,827	509,188
Projected Population (2028)	33,789	221,833	506,870

HOUSING

	1 mile	3 miles	5 miles
Total Households	9,859	64,232	161,272
Projected Total Households (2028)	9,997	64,275	161,832

INCOME

	1 mile	3 miles	5 miles
Median Household Income	\$62,627	\$64,849	\$69,821
Average Household Income	\$88,072	\$89,239	\$96,095
Per Capita Income	\$25,931	\$26,632	\$30,959
Median Disposable Income	\$52,790	\$54,504	\$57,593
Average Disposable Income	\$67,344	\$68,773	\$72,975

DAYTIME DEMOS

	1 mile	3 miles	5 miles
Total Daytime Population	25,680	223,946	471,156
Daytime Population Workers	6,967	106,462	206,652
Daytime Population Residents	18,713	117,484	264,504

RACE & ETHNICITY

	1 mile	3 miles	5 miles
White	6,259 18.64%	43,242 19.41%	128,450 25.23%
Black or African American	1,463 4.36%	21,904 9.83%	47,871 9.40%
American Indian & Alaska Native Population	560 1.67%	3,588 1.61%	8,361 1.64%
Asian Population	8,705 25.92%	38,798 17.41%	72,233 14.19%
Pacific Islander Population	232 0.69%	1,596 0.72%	3,195 0.63%
Other Race Population	9,577 28.52%	71,853 32.25%	151,514 29.76%
Population of Two or More Races	6,789 20.21%	41,846 18.78%	97,543 19.16%
Hispanic Population	20,030 59.64%	133,904 60.09%	288,882 56.74%
Non-Hispanic Population	13,555 40.36%	88,923 39.91%	220,286 43.26%

EDUCATION

	1 mile	3 miles	5 miles
Bachelor's Degree	2,808 12.59%	20,267 14.53%	55,987 16.97%
Graduate/Professional Degree	958 4.30%	6,512 4.67%	26,100 7.91%

AGE

	1 mile	3 miles	5 miles
Median Age	35.9	32.5	33.7