



Quality Office Space For Lease

156 DIABLO ROAD, DANVILLE

Suite 110

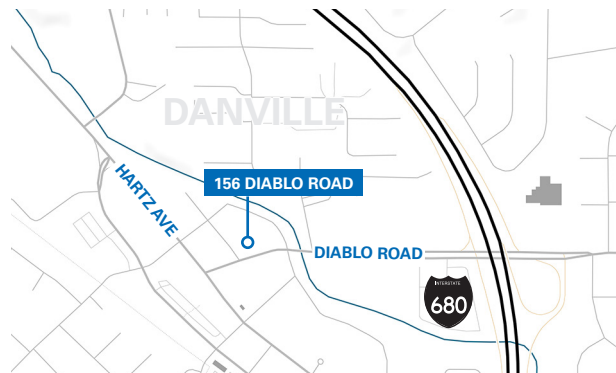
- ±2,254 RSF with very high end new improvements
- 5 Private offices, Conference room, Kitchen

Suite 203

- ±2,716 RSF with nice improvements
- 7 Private offices, reception, conference room, storage room and kitchenette
- Abundant surface and below grade secure parking

Suite 300

- ±3,475 RSF
- 8 private offices
- Conference room
- Copy/Storage Room
- Kitchen



For information, please contact:

Rick Steffens

Senior Managing Director

t 925-974-0110

rick.steffens@nrmk.com

CA RE Lic. #00466002

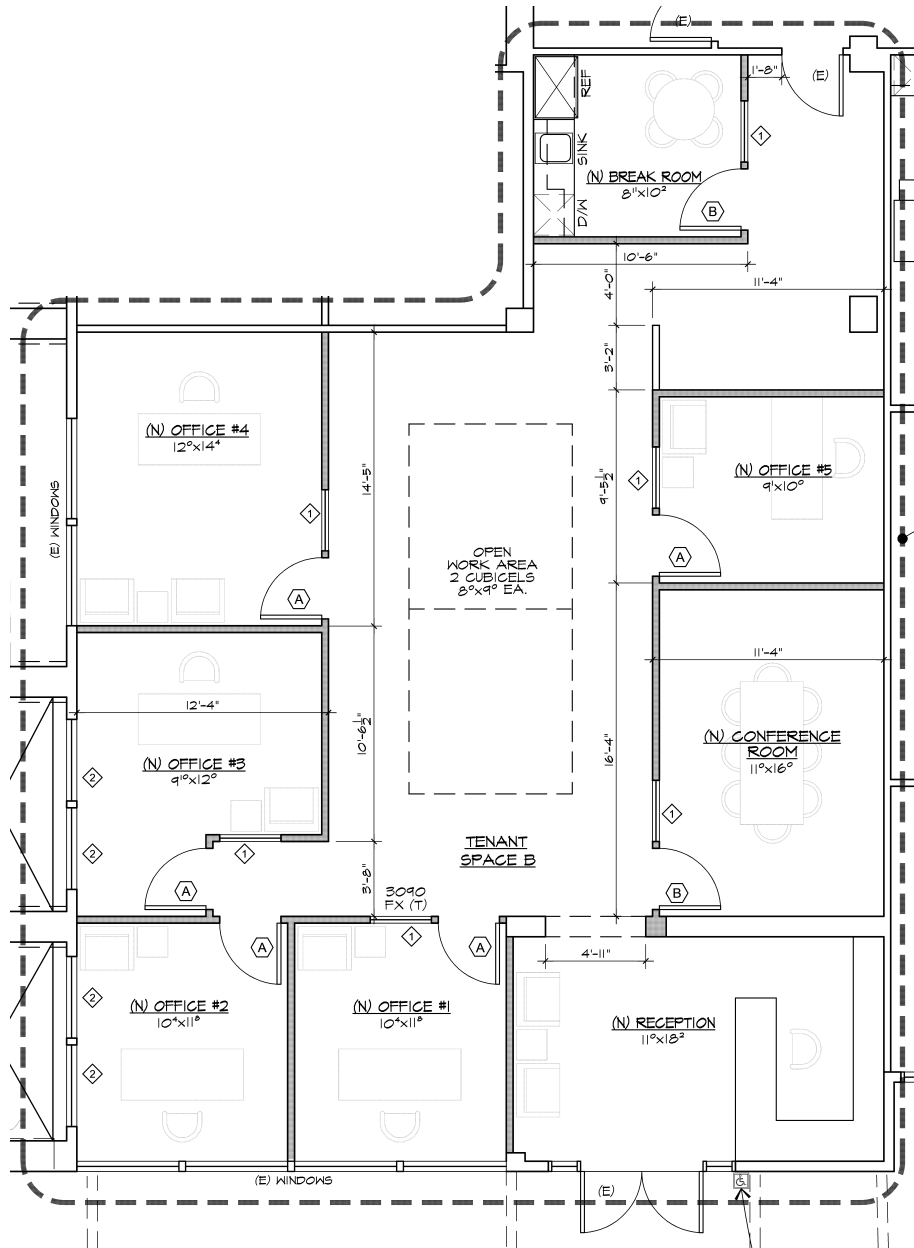
nrmk.com

NEWMARK

The distributor of this communication is performing acts for which a real estate license is required. The information contained herein has been obtained from sources deemed reliable but has not been verified and no guarantee, warranty or representation, either express or implied, is made with respect to such information. Terms of sale or lease and availability are subject to change or withdrawal without notice.

FLOOR PLAN - SUITE 110

±2,254 RSF



For information, please contact:

Rick Steffens

Senior Managing Director

t 925-974-0110

rick.steffens@nrmk.com

CA RE Lic. #00466002

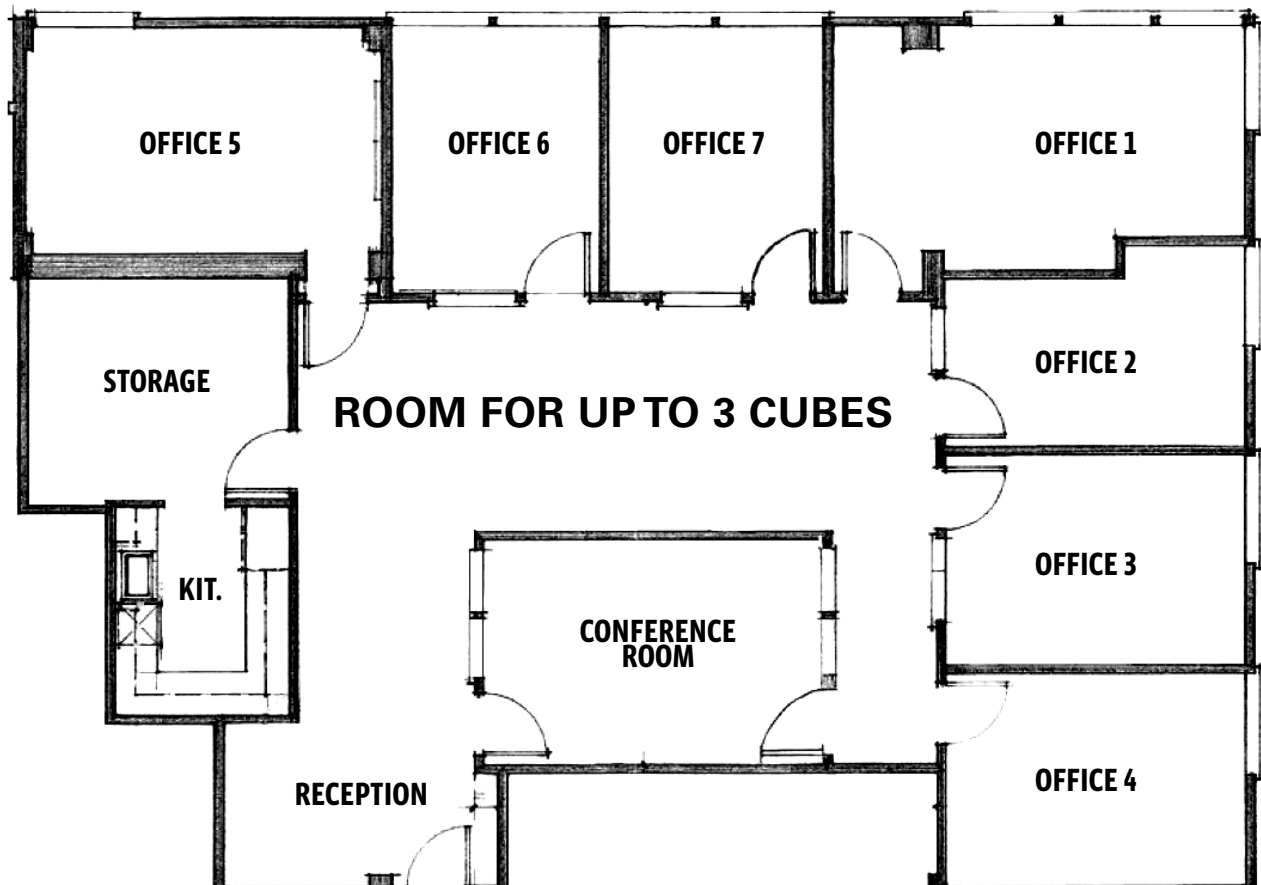
nrmk.com

NEWMARK

The distributor of this communication is performing acts for which a real estate license is required. The information contained herein has been obtained from sources deemed reliable but has not been verified and no guarantee, warranty or representation, either express or implied, is made with respect to such information. Terms of sale or lease and availability are subject to change or withdrawal without notice.

FLOOR PLAN

SUITE 203: ±2,716 RSF



For information, please contact:

Rick Steffens

Senior Managing Director

t 925-974-0110

rick.steffens@nrmk.com

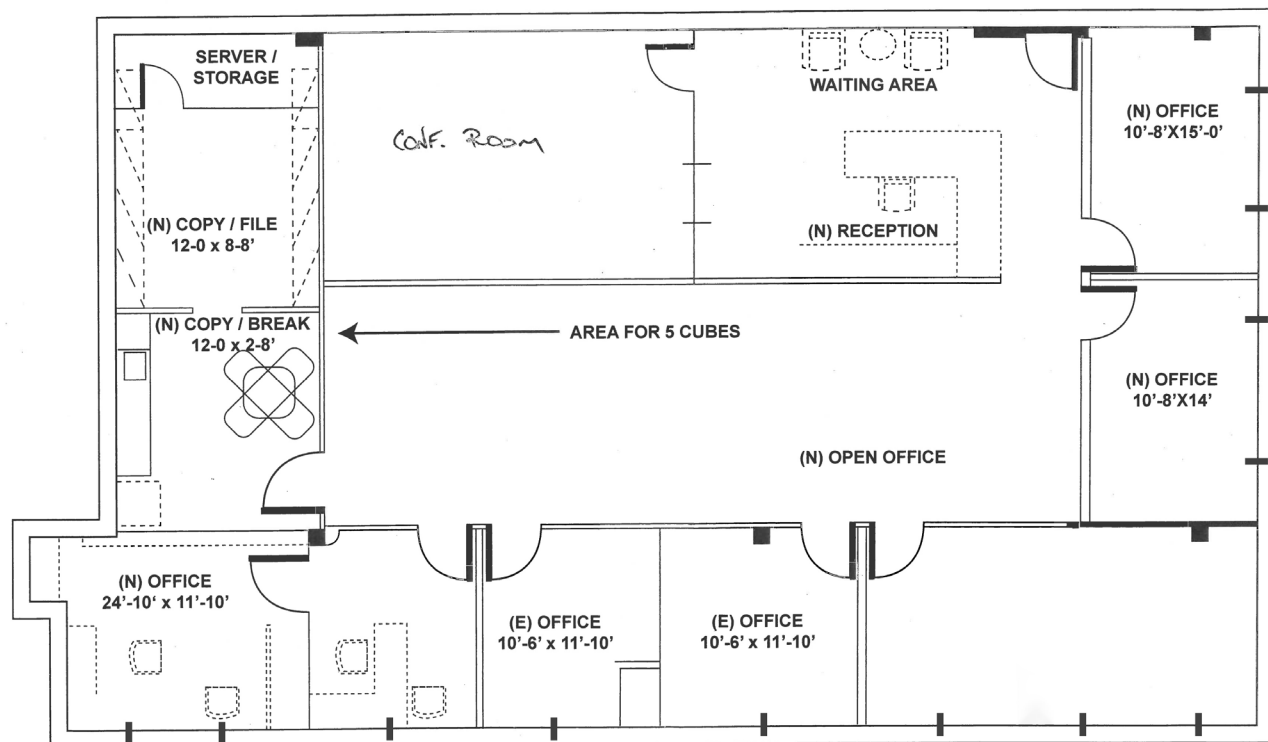
CA RE Lic. #00466002

nrmk.com

NEWMARK

The distributor of this communication is performing acts for which a real estate license is required. The information contained herein has been obtained from sources deemed reliable but has not been verified and no guarantee, warranty or representation, either express or implied, is made with respect to such information. Terms of sale or lease and availability are subject to change or withdrawal without notice.

SUITE 300 - ± 3,475 RSF



For information, please contact:

Rick Steffens

Senior Managing Director

t 925-974-0110

rick.steffens@nrmk.com

CA RE Lic. #00466002

nrmk.com

NEWMARK

The distributor of this communication is performing acts for which a real estate license is required. The information contained herein has been obtained from sources deemed reliable but has not been verified and no guarantee, warranty or representation, either express or implied, is made with respect to such information. Terms of sale or lease and availability are subject to change or withdrawal without notice.