

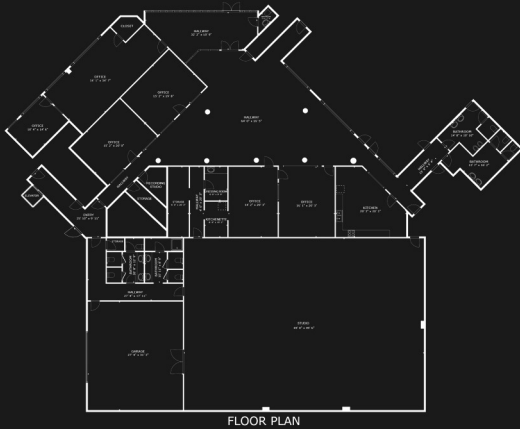
KINDRED CAPITAL BUILDING

ABOUT THIS PROPERTY

The Kindred Capital Building at 555 5th Avenue sits in a prime downtown Huntington location, within walking distance of Pullman Square, local restaurants, banks, and government offices. Easy access to major roadways makes commuting simple for clients and staff alike.

LOCATION HIGHLIGHTS

- 01 Walking distance to Pullman Square
- 02 Access to major roadways
- 03 Near local restaurants & banks
- 04 Close to government offices
- 05 Contemporary design & historic charm



NOW LEASING

Office Suites Available | Negotiable Terms



For Leasing
Call or Text
Brody Nash
304-208-6190



555

5TH AVENUE | HUNTINGTON, WV

PREMIER OFFICE SPACE IN THE HEART OF HUNTINGTON

NOW LEASING