



15591 Container Lane

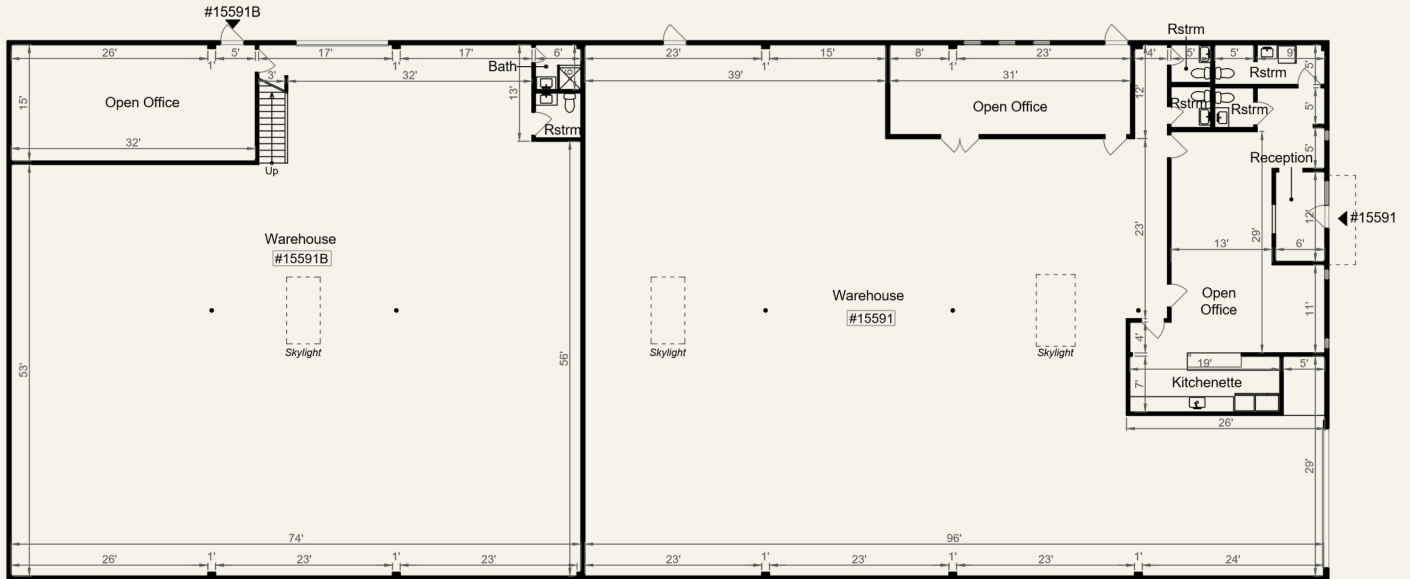
Freestanding Industrial Warehouse

\$4,907,700 | ±11,970 SQ. FT. | ±23,958 SQ. FT. LOT | HUNTINGTON BEACH

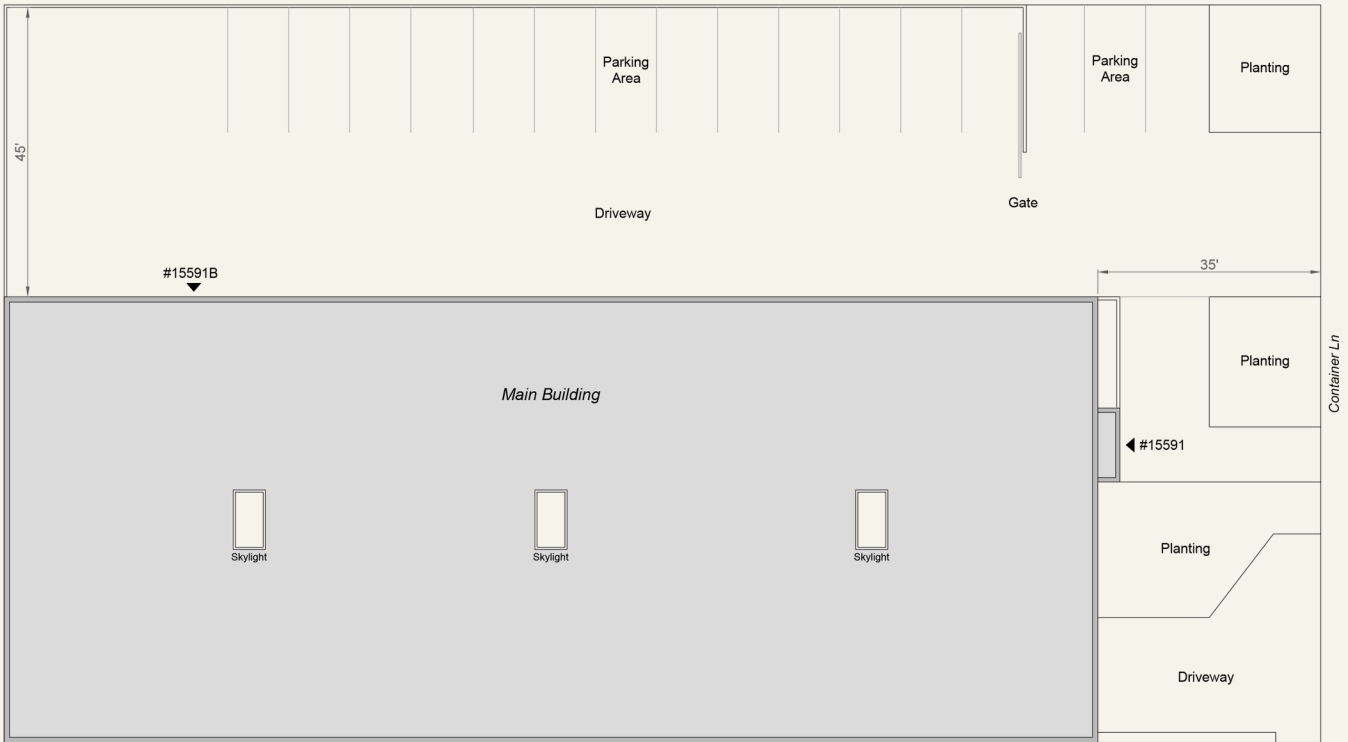
Offered for the first time in years, 15591 Container Lane is a freestanding industrial building delivering nearly 12,000 square feet of flexible space in one of Orange County's most desirable coastal business hubs. This property is ideal for an owner-user, investor, or visionary developer seeking to capitalize on the low industrial vacancy rate in Huntington Beach. Currently configured as two separate warehouse spaces (6,765 SF and 5,205 SF), the layout supports a range of use cases—including dual occupancy or full-building operations. With 18' ceilings, two 12' roll-up doors, a secure gated yard, 400 amps of 208V 3-phase power, and a recently poured concrete lot, the building is move-in ready and primed for customization. Situated on over half an acre with 17 on-site parking spaces (13 gated), this location also presents a rare opportunity to reimagine the space into a creative industrial office or showroom. Surrounded by lifestyle and logistics advantages—including close proximity to the Ports of LA and Long Beach, John Wayne and Long Beach Airports, major freeways, and Huntington Harbour Marina—this property blends operational functionality with coastal appeal. Whether you're looking to occupy, lease, or redevelop, this is a strategic asset in a high-demand industrial submarket.

3426 E. COAST HIGHWAY, CORONA DEL MAR, CA 92625

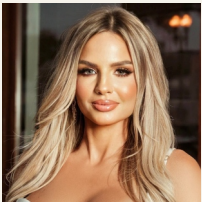
THEAGENCYRE.COM



FLOOR PLAN

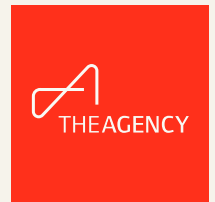


SITE PLAN



Ashley Marie

ASHLEY.MARIE@THEAGENCYRE.COM
 973.570.2372 | LIC. #01997371
 AGENT



3426 E. COAST HIGHWAY, CORONA DEL MAR, CA 92625

THEAGENCYRE.COM