

For Sublease

Uptown Atlanta

565 Main St NE
Atlanta, GA 30324

24,972 RSF

- LED: June 30, 2031
- Full Floor
- Creative Space
- Furniture Available
- Blade Signage



GET IN TOUCH

Joey Kline

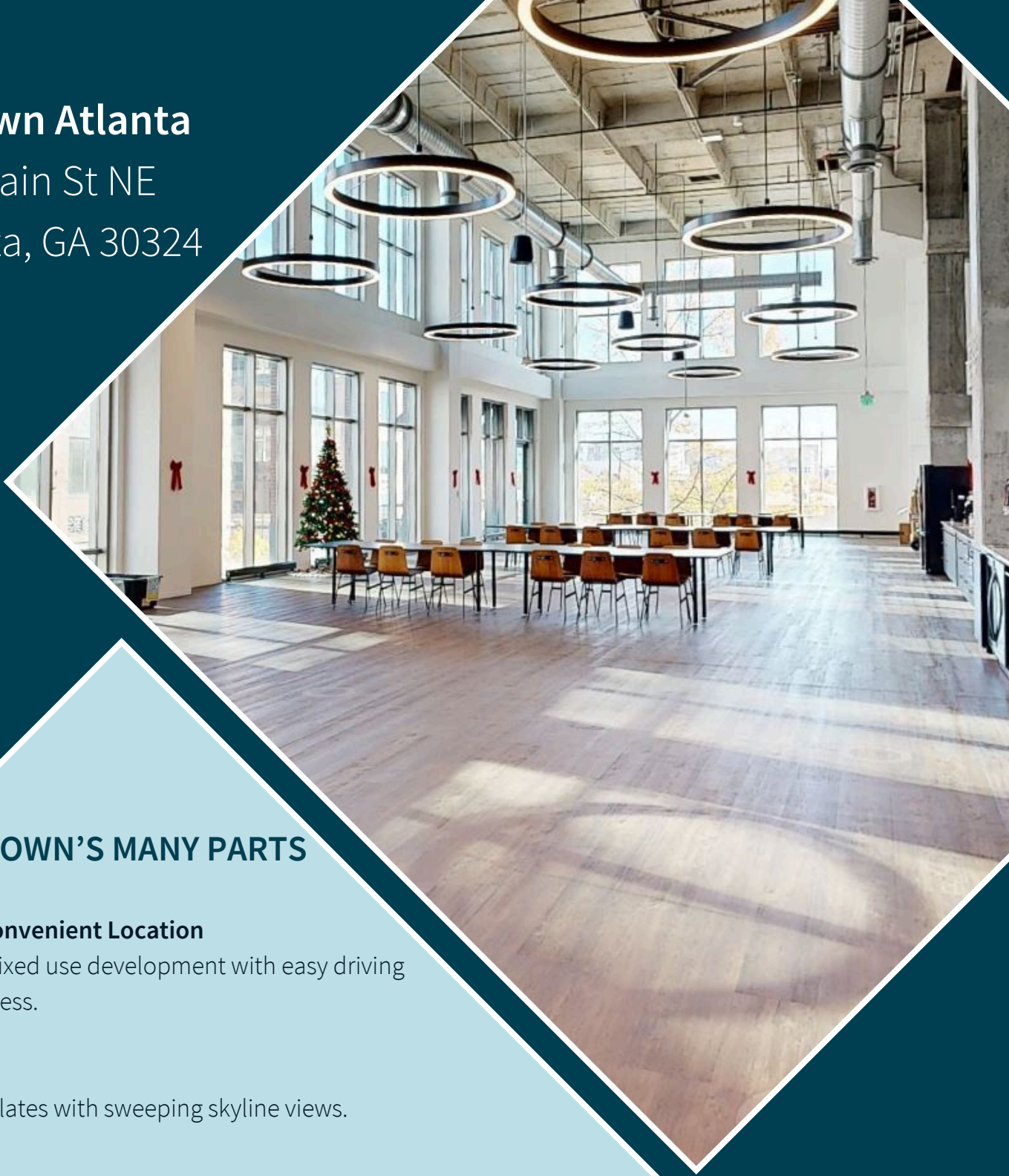
C: +1 (404) 579 5723

E: Joey.Kline@jll.com

Uptown Atlanta

565 Main St NE

Atlanta, GA 30324



UPTOWN'S MANY PARTS

Walkable & Convenient Location

High quality mixed use development with easy driving and transit access.

1M SF Office

Flexible floor plates with sweeping skyline views.

35K SF Retail

Discover authentic globally inspired dining alongside local favorites.

The Lawn

A hub of year-round programming connecting the neighborhood and community.

Atrium

With an extensive amenity roster and massive LED entertainment wall.

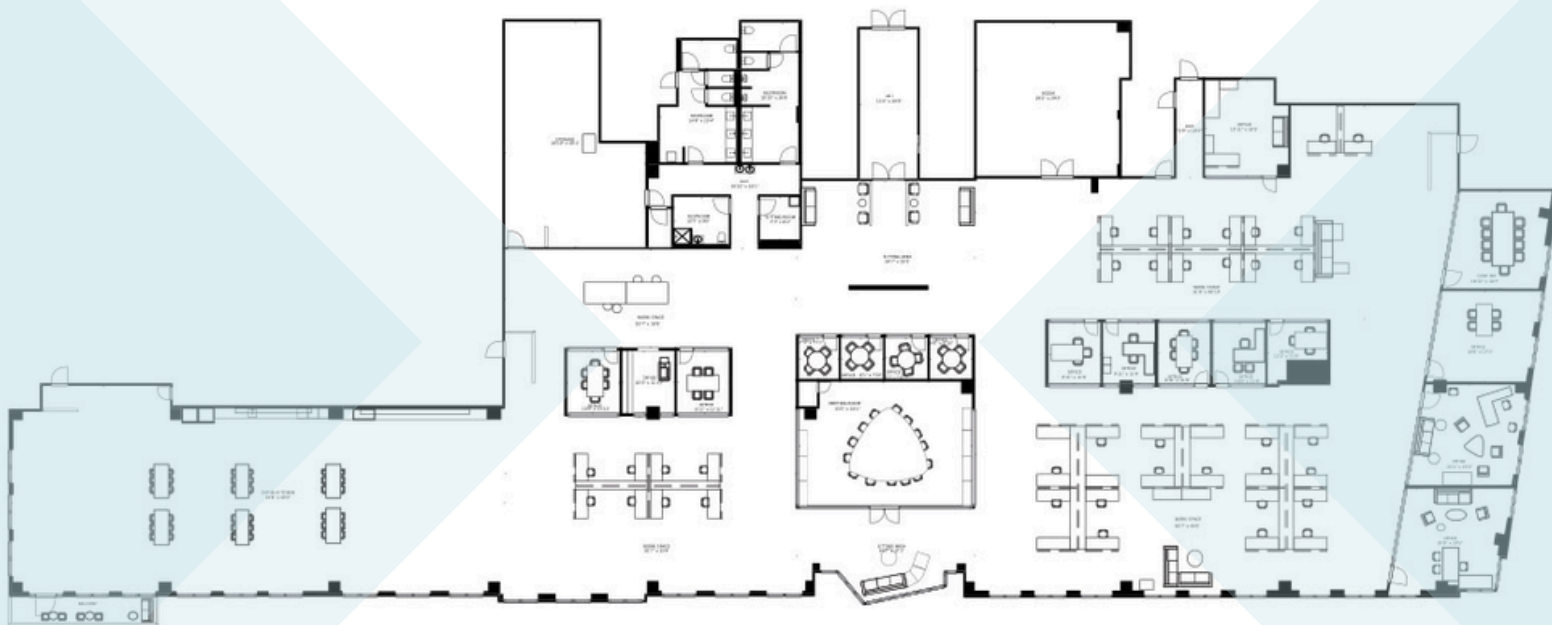
For Virtual Tour: [CLICK HERE](#)



Uptown Atlanta

565 Main St NE

Atlanta, GA 30324



Floor 3

24,972 Sq. Ft.

GET IN TOUCH

Joey Kline

C: +1 (404) 579 5723

E: Joey.Kline@jll.com



Introducing Main Street

A hub of connectivity and community, Uptown's Main Street will be home to 35,000 SF of retail, including bold culinary concepts and experiences that delight from workday to weekend.

Discover authentic global flavors alongside local favorites



In the middle of everything

Connecting Atlanta's best neighborhoods and literally steps to MARTA

Access a drive-free commute home, Atlanta United games, shows at Fox Theatre and travel via Atlanta Hartsfield-Jackson International airport with ease.

 On-Site at Uptown

< .5 mile

- to GA-400 North
- to I-85 North/I-85South
- Piedmont Road, Sidney Marcus and Miami Circle amenities

 Sidney Marcus Amenities

< 1 mile

- to Peachtree Hills, Peachtree Heights, Peachtree Battle and Garden Hills

 Peachtree Battle Amenities

 Armour Amenities

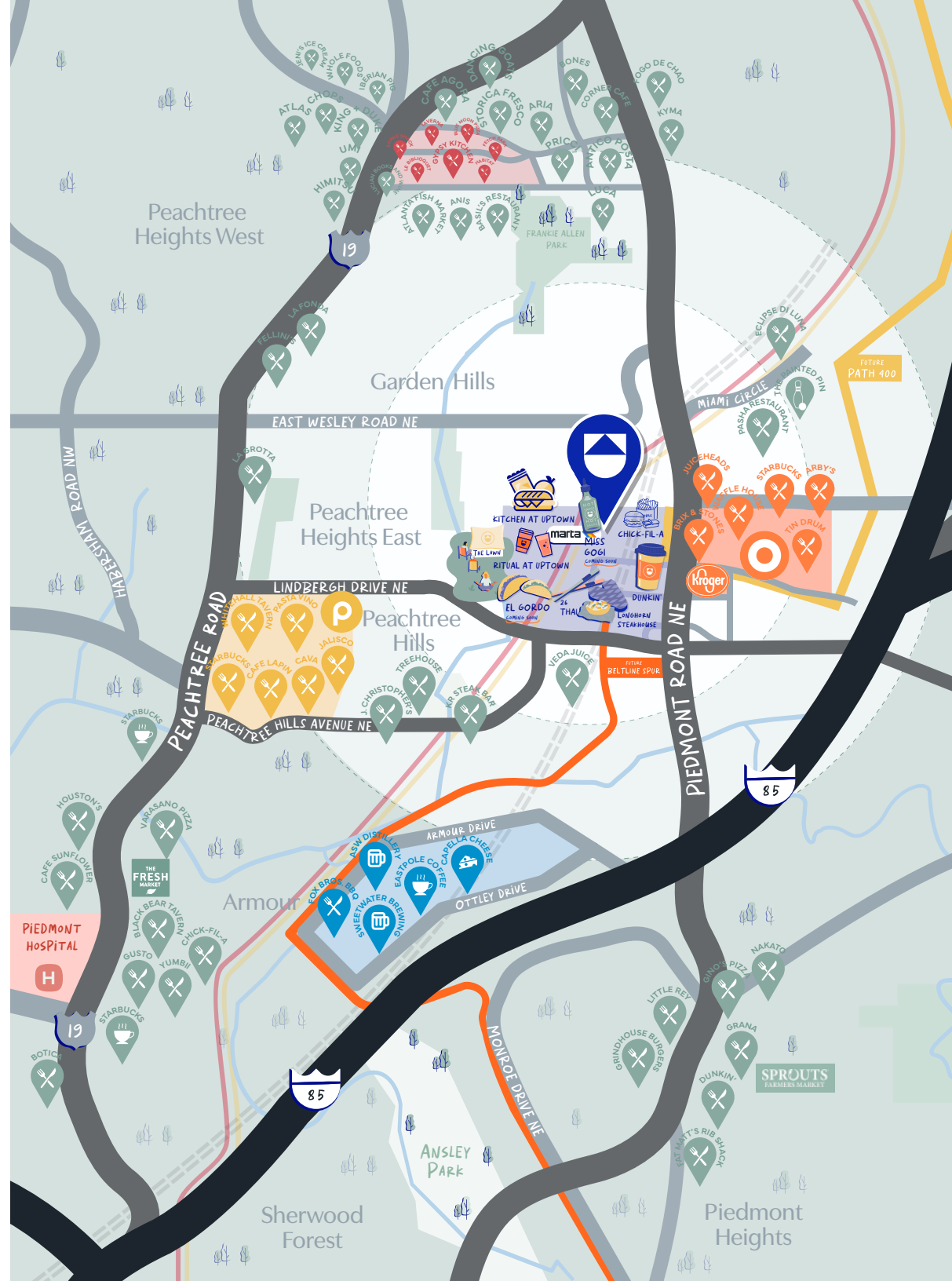
< 2 miles

- to Armour, Lenox, Buckhead Village and West Paces

 Buckhead Village Amenities

< 3 miles

- to Piedmont Hospital, Morningside, Brookwood, Ansley Park, Piedmont Park, Piedmont Heights



Accessibility Amplified

Uptown is a multi-modal destination that boasts direct connection to MARTA and is quickly accessible to GA-400 and I-85. With convenient on-site parking available, whether you're coming or going from North, South, East or West Atlanta, it's easy to find your way to Uptown.

