

2019 Allen St. Ext.

Jamestown, New York 14701

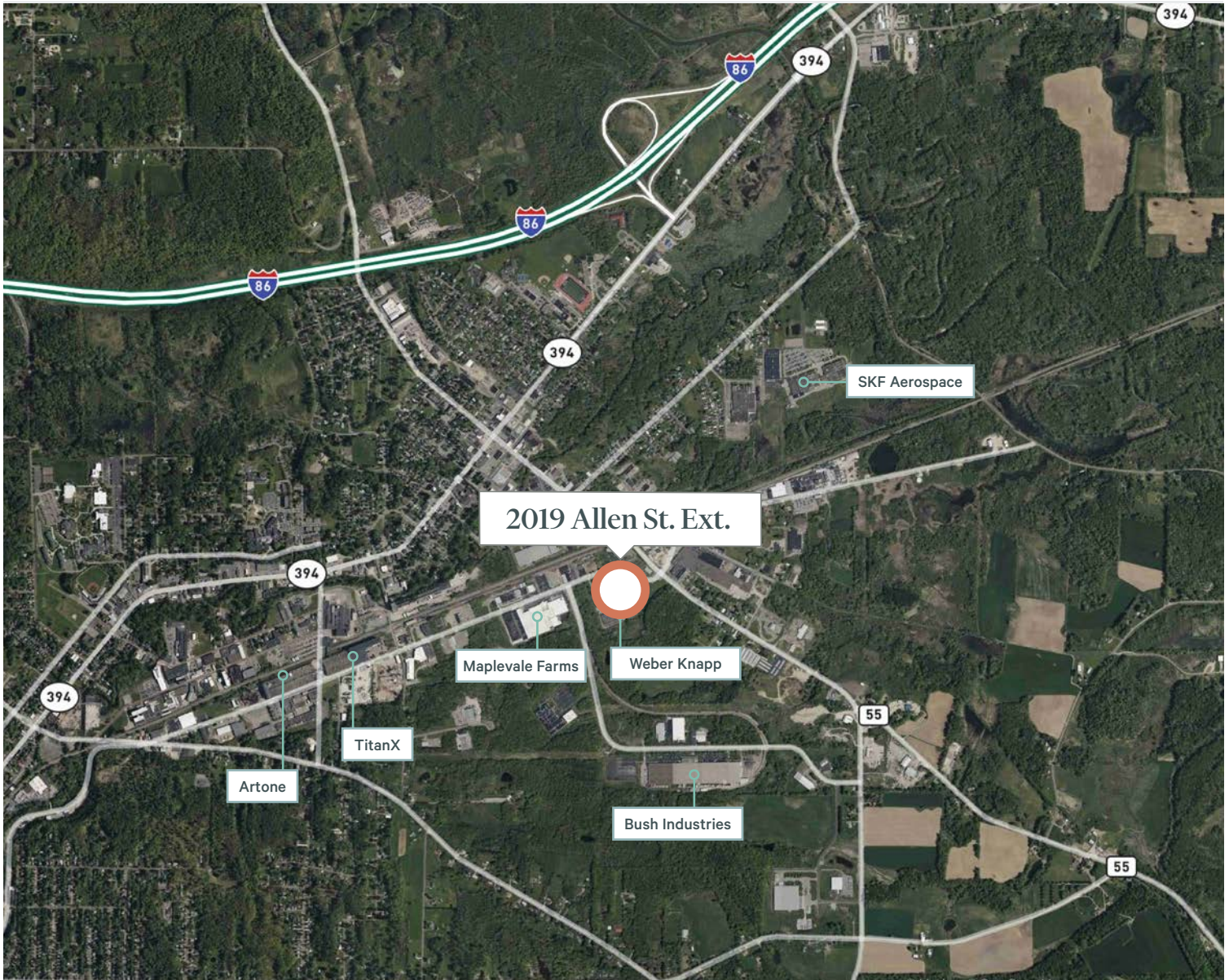


±20,000 sq. ft. of industrial space available for sublease just outside of Mason Industrial Park in Jamestown, New York. The offering features 18' clear height, 37'x29' column spacing, and one (1) loading dock. The space has abundant natural light with rows of 6' high windows along the upper portion of two exterior walls.

The sublease space is limited to warehouse/distribution/light manufacturing uses and offers no adjoining office component.

Property Highlights

- + ±20,000 sq. ft. of warehouse space for sublease
- + Clear Height: 18'
- + Column Spacing: 37'x29'
- + Dock Doors: 1
- + Parking for 10–15 cars
- + Approximately 1.5 mi. to I-86 (Exit 13)



Contact Us

Lida Eberz

Lic. Real Estate Salesperson
+1 716 855 3700 x 8708
lida.eberz@cbre-buffalo.com

Tom Roberts

Lic. Real Estate Salesperson
+1 716 855 3700 x 8707
tom.roberts@cbre-buffalo.com

CBRE Upstate NY

500 Seneca Street, Ste. 507
Buffalo, New York 14204
+1 716 855 3700

© 2026 CBRE Upstate NY, part of the CBRE Affiliate Network. All rights reserved. This information has been obtained from sources believed reliable, but has not been verified for accuracy or completeness. You should conduct a careful, independent investigation of the property and verify all information. Any reliance on this information is solely at your own risk. CBRE Upstate NY and the CBRE Upstate NY logo are service marks of CBRE Upstate NY. All other marks displayed on this document are the property of their respective owners, and the use of such logos does not imply any affiliation with or endorsement of CBRE Upstate NY. Photos herein are the property of their respective owners. Use of these images without the express written consent of the owner is prohibited.