

# Research Park at Florida Atlantic University

Innovation Centre 2 - 3848 FAU Boulevard | Boca Raton, FL 33431



AVISON  
YOUNG

## Property Highlights

- Adjacent to Florida Atlantic University and the Boca Raton Executive Airport
- Access to Tri-Rail by Palm Tram or El Rio walking/bike trail
- University collaboration among park tenants
- On-site management

## Availability

- Suite 100/207: 10,613 sf
- Suite 310: 6,372 sf

## Rental Rate

- \$18.50 NNN

## Operating Expenses

- \$8.36  
*Net of electric & janitorial*

## Benefits for Research Park Companies

[CLICK TO VIEW](#)

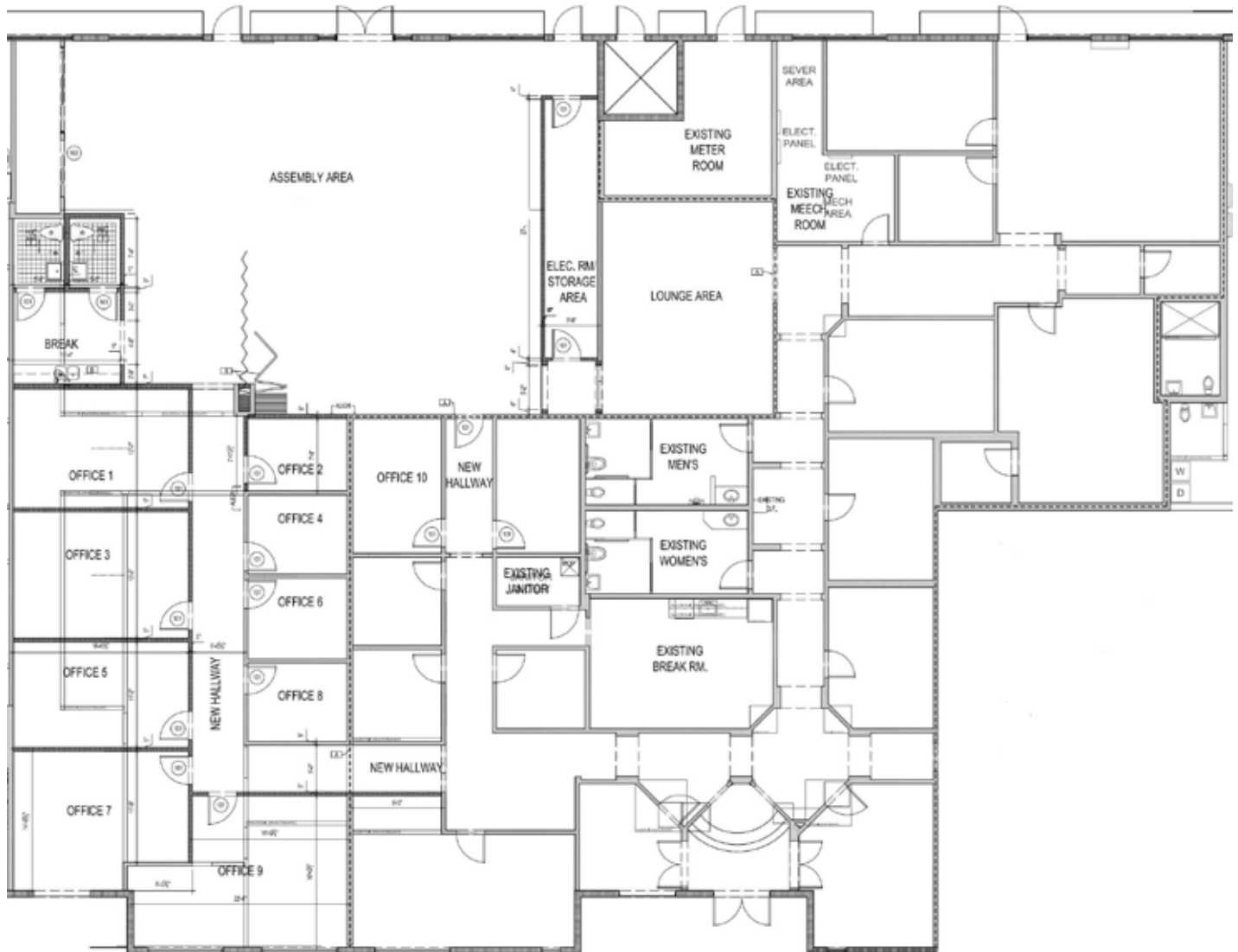
**Greg Martin**, Principal  
D 954 903 3900  
greg.martin@avisonyoung.com

**Justin Cope**, Principal  
D 954 903 3701  
justin.cope@avisonyoung.com

**Lisa Blumer**, Senior Associate  
D 954 903 3703  
lisa.blumer@avisonyoung.com

500 W Cypress Creek Road  
Suite 550  
Fort Lauderdale, FL 33309

## Suite 100/207 - 10,613 sf



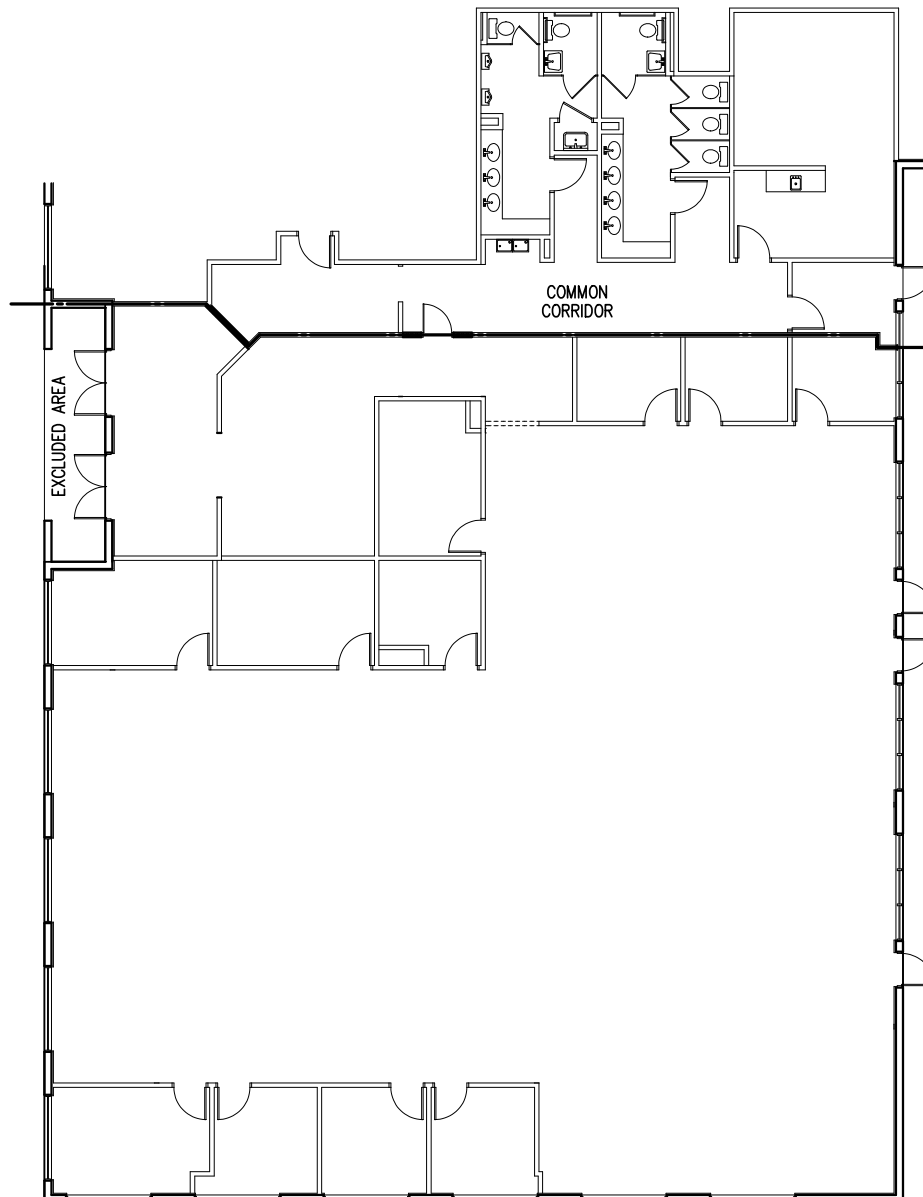
**Greg Martin**, Principal  
D 954 903 3900  
greg.martin@avisonyoung.com

**Justin Cope**, Principal  
D 954 903 3701  
justin.cope@avisonyoung.com

**Lisa Blumer**, Senior Associate  
D 954 903 3703  
lisa.blumer@avisonyoung.com

500 W Cypress Creek Road  
Suite 550  
Fort Lauderdale, FL 33309

## Suite 310 - 6,372 sf



**Greg Martin**, Principal  
D 954 903 3900  
greg.martin@avisonyoung.com

**Justin Cope**, Principal  
D 954 903 3701  
justin.cope@avisonyoung.com

**Lisa Blumer**, Senior Associate  
D 954 903 3703  
lisa.blumer@avisonyoung.com

500 W Cypress Creek Road  
Suite 550  
Fort Lauderdale, FL 33309

## Property Location



**Greg Martin**, Principal  
D 954 903 3900  
greg.martin@avisonyoung.com

**Justin Cope**, Principal  
D 954 903 3701  
justin.cope@avisonyoung.com

**Lisa Blumer**, Senior Associate  
D 954 903 3703  
lisa.blumer@avisonyoung.com

500 W Cypress Creek Road  
Suite 550  
Fort Lauderdale, FL 33309