

# ±16,000 SF Warehouse Building with Two Storage Yards

7325 Roseville Road, Sacramento, CA 95842

**REDUCED PRICE: \$2,800,000**



## Contact Us

**Todd Sanfilippo**

Executive Vice President  
+1 916 781 4859  
todd.sanfilippo@cbre.com  
Lic. 01045162

**Walter Smyth**

Senior Vice President  
+1 916 781 4843  
walter.smyth@cbre.com  
Lic. 00956946

**Matt Susac**

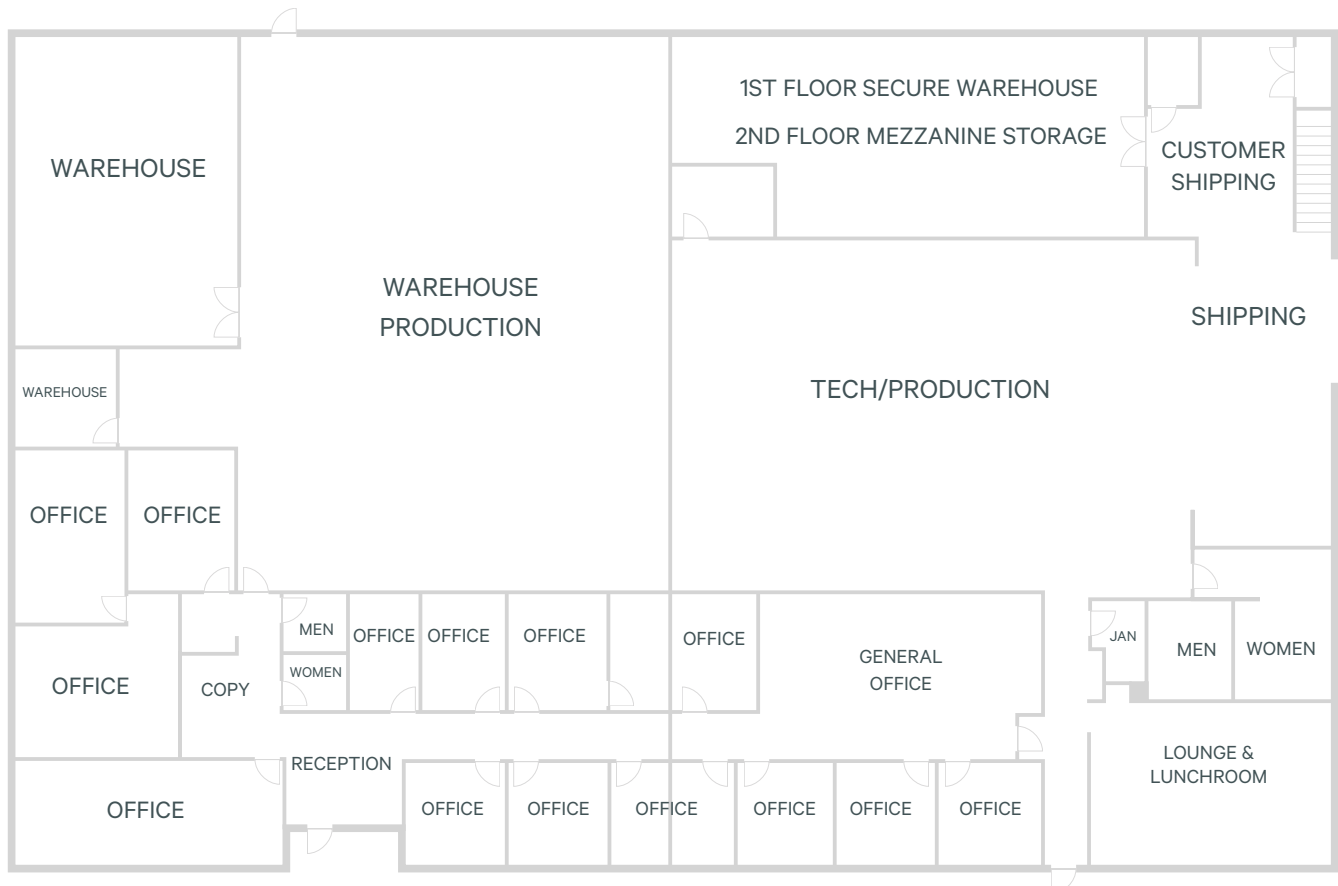
First Vice President  
+1 916 781 4832  
matt.susac@cbre.com  
Lic. 01979110

# Building Features

- Total: ±16,000 SF
- Office: ±6,160 SF
- Land Area: ±0.92 Acres
- Yards: Two (2) ±4,000 SF each
- Clear Height: ±21'
- GL Door: One (1) ±12'x14', plus Three (3) Framed In Door Openings
- Power: 600 Amps, 240 Volt 3 Phase\*
- Natural Gas Available
- Fire Sprinklers
- Year Built: 1990
- Roof Replaced
- Zoning: M-1 (Light Industrial)
- APN# 222-0360-012
- Semi-Truck Accessible
- Professionally Maintained Industrial Park

\*buyer to independently verify prior to entering binding agreement

## Floor Plan



NOT TO SCALE. ALL DIMENSIONS ARE APPROXIMATE



## Warehouse Building

7325 Roseville Road | Sacramento, CA 95842

For Sale

# Building Photos

---





## Warehouse Building

7325 Roseville Road | Sacramento, CA 95842

For Sale

# Interior Photos

---

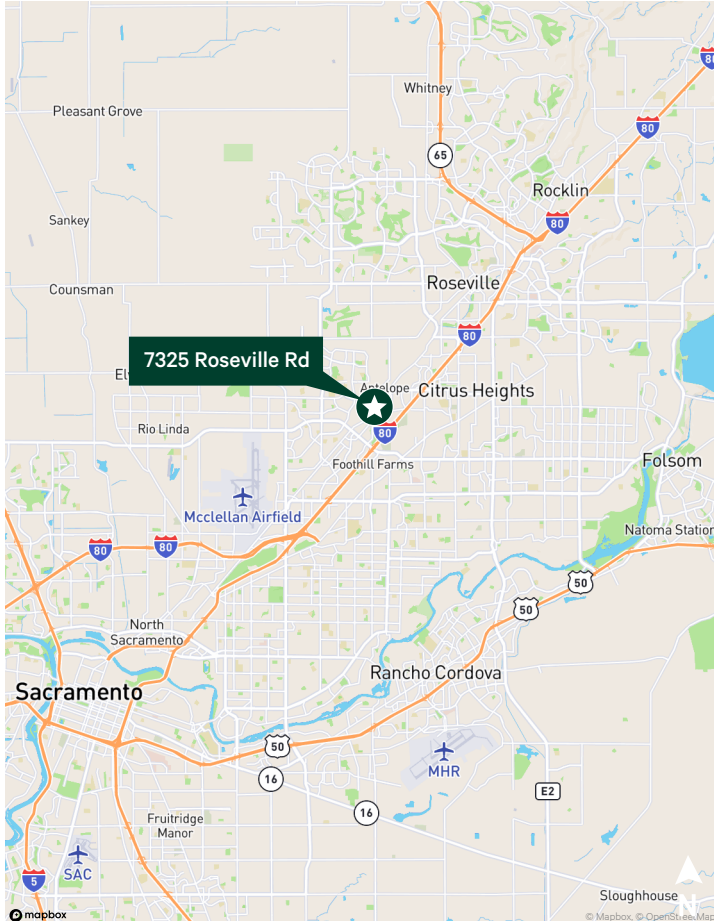


## Warehouse Building

7325 Roseville Road | Sacramento, CA 95842

For Sale

# Area Map & Aerial



## Contact Us

### Todd Sanfilippo

Executive Vice President  
+1 916 781 4859  
todd.sanfilippo@cbre.com  
Lic. 01045162

### Walter Smyth

Senior Vice President  
+1 916 781 4843  
walter.smyth@cbre.com  
Lic. 00956946

### Matt Susac

First Vice President  
+1 916 781 4832  
matt.susac@cbre.com  
Lic. 01979110

© 2025 CBRE, Inc. All rights reserved. This information has been obtained from sources believed reliable but has not been verified for accuracy or completeness. CBRE, Inc. makes no guarantee, representation or warranty and accepts no responsibility or liability as to the accuracy, completeness, or reliability of the information contained herein. You should conduct a careful, independent investigation of the property and verify all information. Any reliance on this information is solely at your own risk.

**CBRE**