

✦ ✦ ✦
FOR SALE
Religious Facility
With Real Property
✦ ✦ ✦



**1415 E. Ramsey St.
Banning, CA 92220**

Executive Summary

We are pleased to present to you a unique opportunity in the heart of Banning, CA.

Offered at \$1,980,580, this religious facility features 9,212 SF of well-maintained building space situated on a 1.25-acre lot.

Located directly on E Ramsey Street, one of Banning's most prominent and well-trafficked corridors, the property offers exceptional visibility and accessibility.

Turnkey building, allowing for immediate use or custom reconfiguration. Ideal for religious services, educational programs, community outreach, mission-driven organizations and forward-thinking investors.



**1415 E. Ramsey St.
Banning, CA 92220**

Property Overview

- Property Type: Religious Facility
- Building Size: Total of 9,212 SF
- Land Size: 1.25 Acres
- Condition: Well-maintained; turnkey
- Zoning: Religious
- Prime visibility on main street
- Large lot suitable for expansion or redevelopment
- Ideal for religious organizations, schools, or community centers



**1415 E. Ramsey St.
Banning, CA 92220**

Location & Market Overview

Strategic Positioning in Banning, CA Located along the I-10 freeway, Banning offers direct access to regional traffic and growing Inland Empire communities. The property at 1415 E Ramsey St sits on a prominent commercial street, surrounded by schools, churches, and civic amenities — making it ideal for community-focused use.



City Snapshot: Banning, CA (2024)

Population 31,929

Median Household Income \$57,699

Poverty Rate 19.0%

Hispanic or Latino 49.5%

Age 65+ 28.5%

Owner-Occupied Housing 71.5%



1415 E. Ramsey St.

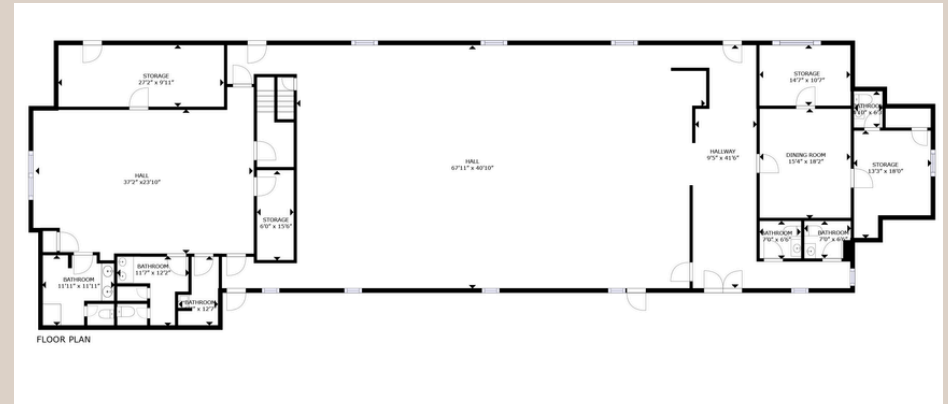
Banning, CA 92220

Site Composition

The property at 1415 E Ramsey St includes two distinct commercial buildings and a vacant lot, offering flexibility for use, expansion, or redevelopment.

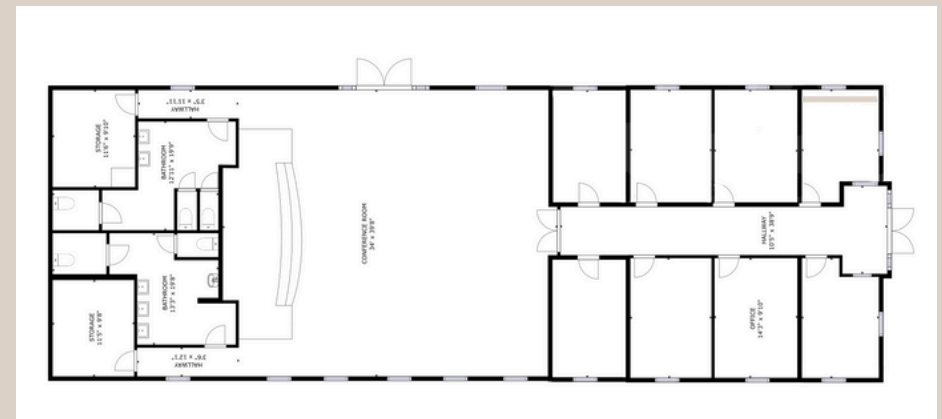
Main Building – 1415 E Ramsey

- Size: ~5,530 SF
- Year Built: 1986
- Current Use: Formerly Calvary Church of God in Christ
- Features: Large sanctuary, offices, restrooms, meeting areas



Second Building – 1387 E Ramsey St

- Size: ~3,607 SF
- Year Built: 2009
- Current Use: Month-to-month lease to Victory Outreach Church
- Features: 8 offices/classrooms, sanctuary/meeting room, storage room, restrooms.



1415 E. Ramsey St.
Banning, CA 92220

Photo Gallery



1415 E. Ramsey St.

Banning, CA 92220

Photo Gallery



1415 E. Ramsey St.

Banning, CA 92220

Photo Gallery



1415 E. Ramsey St.


Banning, CA 92220

Contact Information

Richard Reyes

Reyes Realty Group DRE# 01847689

 **Email: Richard@RichardReyesTeam.com**


 **Phone: (714) 600-3334**

Carolina Wills

West Coast Property Experts DRE# 01275776

Keller Williams Empire Estates DRE # 01527033

 **Email: Carolina@WestCoastPropertyExperts.com**

 **Phone: (626) 862-5654**

Manal Hamad

West Coast Property Experts DRE# 02228282

Keller Williams Empire Estates DRE # 01527033

 **Email: Manal@WestCoastPropertyExperts.com**

 **Phone: (909) 499-6640**