

# KNIGHTDALE STATION



F O R   S A L E   •   L E A S E   •   O R   B U I L D   T O   S U I T

R e t a i l • M e d i c a l • O f f i c e





# PROJECT OVERVIEW

Welcome to Knightdale Station, a dynamic mixed-use development located in the vibrant commercial and medical district along Knightdale Boulevard. The project is situated on two parcels of land spanning approximately 11.26 acres and will total 54,500 square feet.

The parcel along Carolinian Ave (Site 1), will feature three (3) buildings totaling 21,500 square feet, and the parcel along Morning Flyer Way (Site 2) will feature four (4) buildings totaling 33,000 square feet.

## Carolinian Avenue:

- Building 200: 7,500 SF (Leased - Medical Use)
- Building 201: 5,500 SF
- Building 202: 8,500 SF

## Morning Flyer Way:

- Building 100: 10,000 SF (Under Contract- Medical Use)
- Building 101: 10,000 SF (Under Contract- Medical Use)
- Building 102: 10,000 SF
- Building 103: 1,500 SF

**PRICING:** \$39.75 NNN

**DELIVERY CONDITION:** Cold Dark Shell

**TIMELINE:** Site work to begin Q1 2025





# SITE 1

CAROLINIAN AVE

1,500 - 8,500 SF Medical Space For Lease





# CAROLINIAN AVE

## BUILDING 201



## BUILDING 202





# SITE 2

## MORNING FLYER WAY

1,500 - 30,000 SF Retail & Medical Space For Lease





# MORNING FLYER WAY

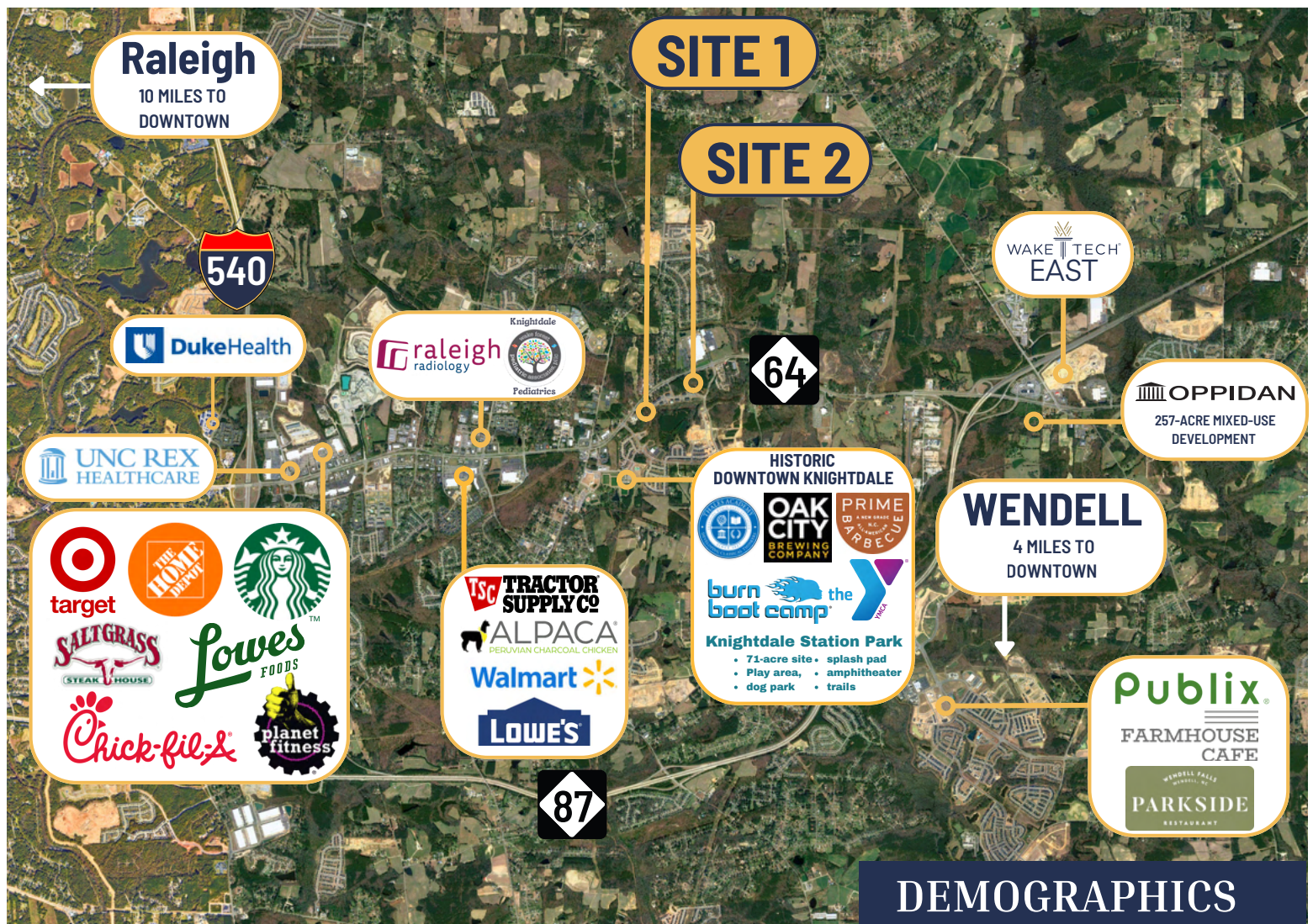
## BUILDINGS 100 & 101



## BUILDING 103







AVG AGE: 36.6



2023 TOTAL  
POPULATION: 68,075



5 YEAR GROWTH RATE:  
4.83%



MEDIAN HOME VALUE:  
\$308,365

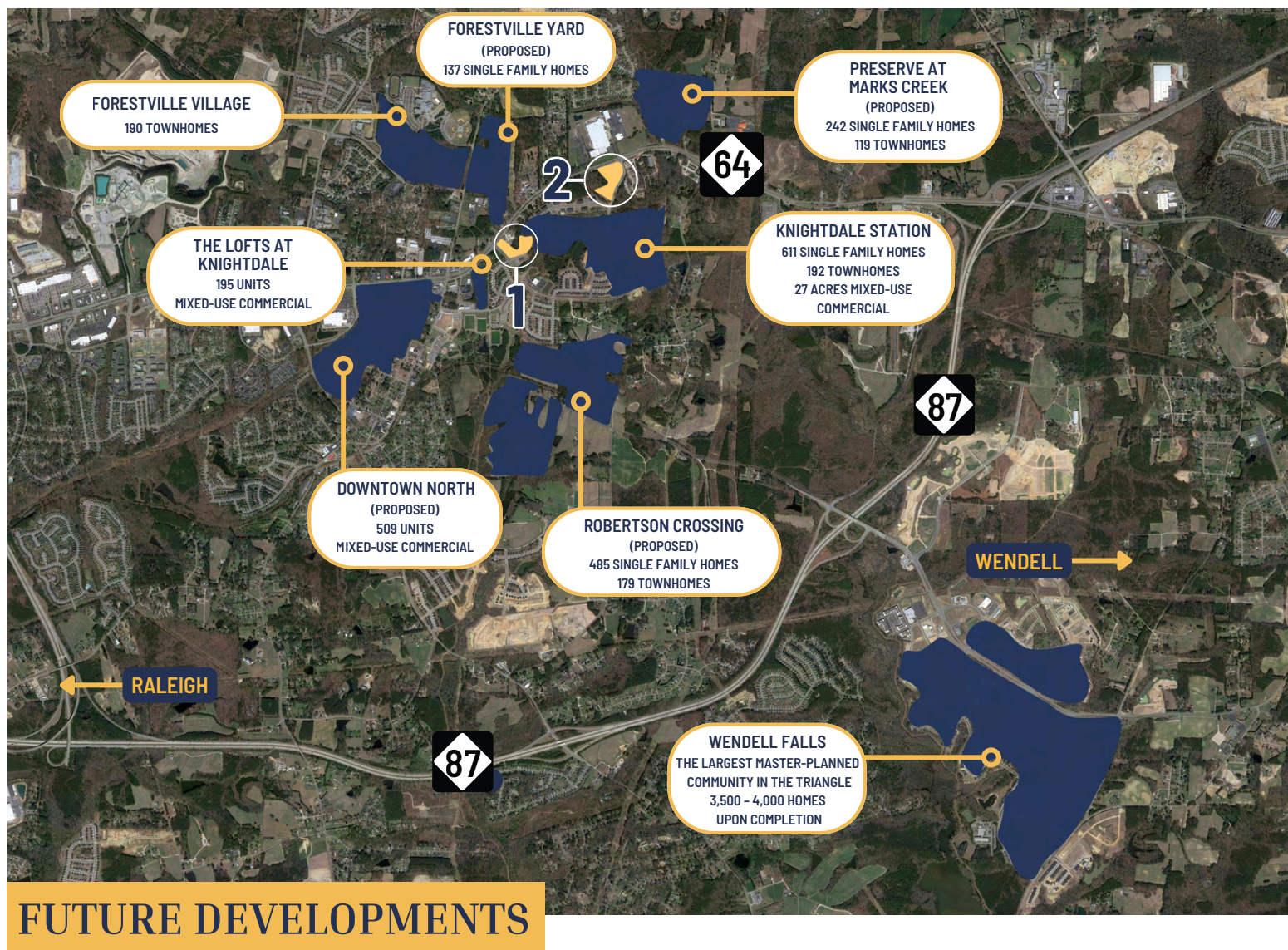


AVG HOUSEHOLD  
INCOME: \$80,924



AVG HOUSEHOLD SIZE: 2.6





---

Knightdale Station Commercial is surrounded by numerous residential developments featuring single family homes and apartment units. The commercial space is conveniently located just minutes away from downtown Knightdale and provides easy access to all major highways.

---



# CONTACT



ATLAS STARK

**Ruffin Jones, Broker**  
(C) 919.602.6571  
(O) 919.289.1338  
ruffjones@atlasstark.com

**Trent Ragland, Broker**  
(C) 919.815.8414  
(O) 919.289.1338  
tragland@atlasstark.com

**Trey Adams, Principal**  
tadams@atlasstark.com



[www.atlasstark.com](http://www.atlasstark.com)

The information contained herein was obtained from sources believed reliable; however, Atlas Stark Holdings, LLC makes no guarantees, warranties, or representations as to the completeness or accuracy thereof. All information should be verified through an independent investigation by the recipient prior to execution of legal documents or purchase to determine the suitability of the property for their needs. The presentation of this property is submitted subject to errors, omissions, changes of price or conditions prior to sale or lease, or withdrawal without notice.