



KLABIN
A member of the CORFAC International network

19440 S DOMINGUEZ HILLS DR
RANCHO DOMINGUEZ, CA 90220



Industrial for Lease

Property Features

- 71,868 Sq. Ft. Building
- 163,350 Sq. Ft. Land
- **3000 Amps (Expandable)**
- 6 Dock High Positions
- 2 Ground Level Doors
- 24' Clear Height
- High Image Corporate Office
- 8,838 Sq. Ft. Office
- 108 Auto Parking Spaces

71,868
SQUARE FEET

FRANK SCHULZ, SIOR
franks@klabin.com
DRE #01455172

TODD TAUGNER, SIOR
toddt@klabin.com
DRE #00870018

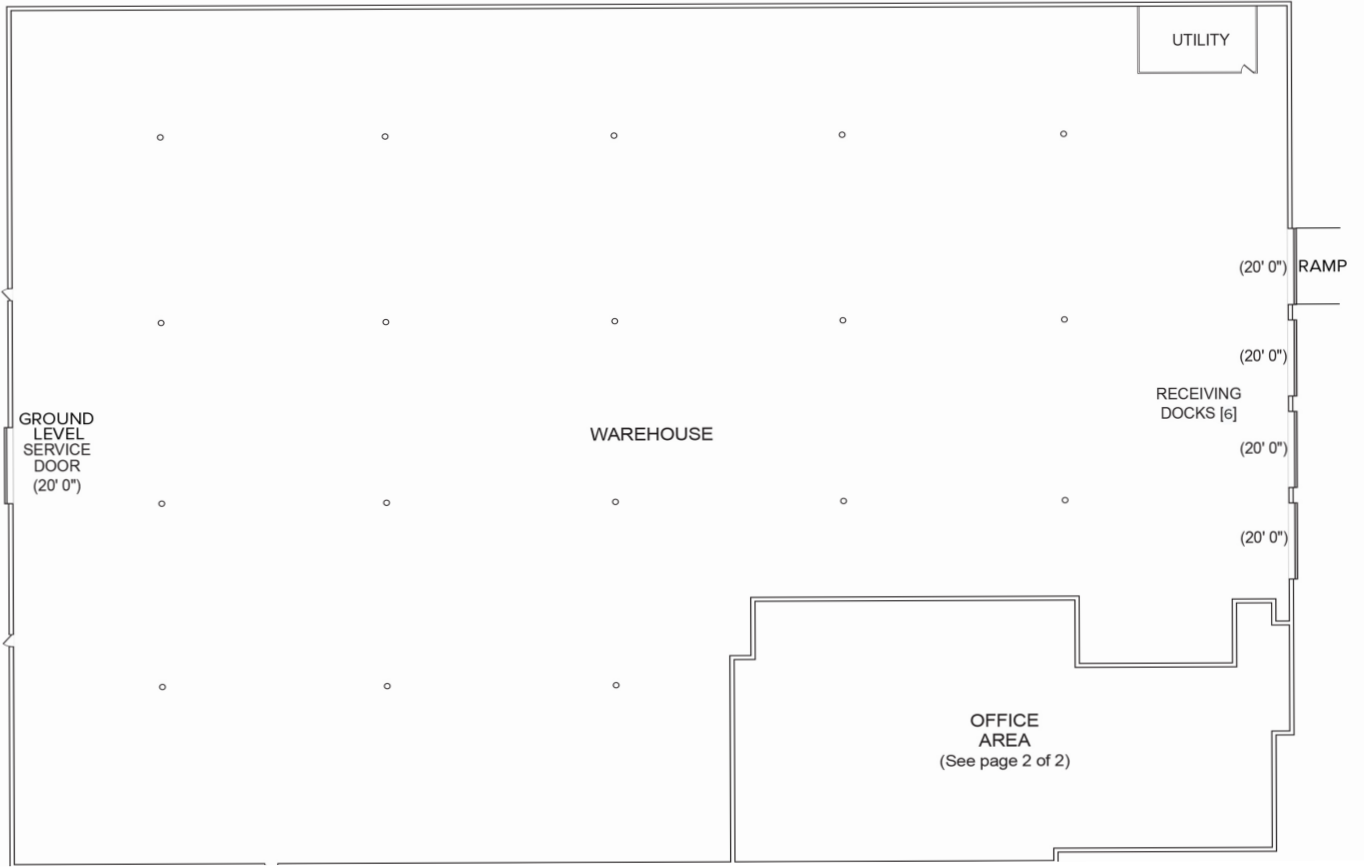
NICK BUSS, SIOR
nickb@klabin.com
DRE #02086889



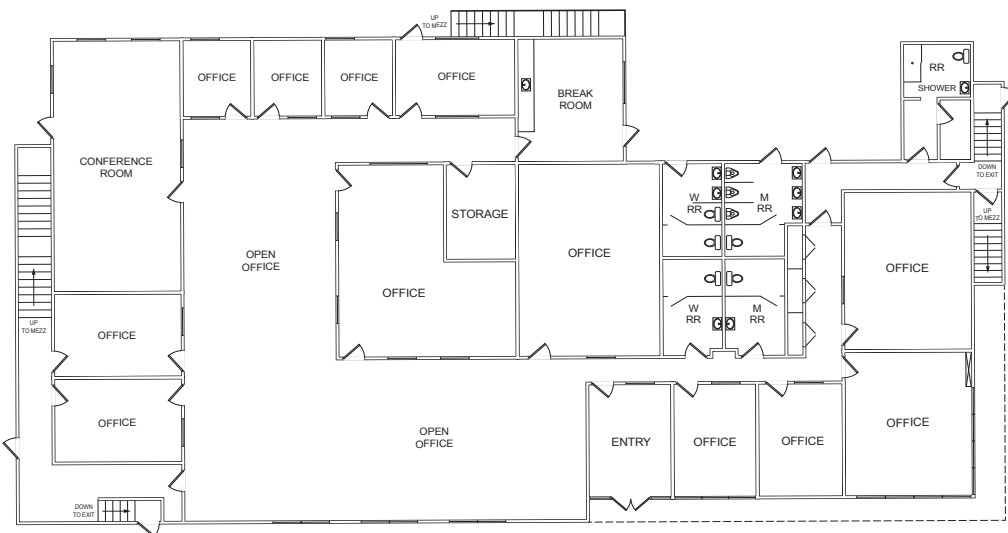
19440 S DOMINGUEZ HILLS DR

RANCHO DOMINGUEZ, CA 90220

Site Plan



Office Layout



19700 S. Vermont Avenue, Suite 100, Torrance, CA 90502
310.329.9000 | 310.329.9088 fax
Corporate DRE 00824993



KLABIN.COM