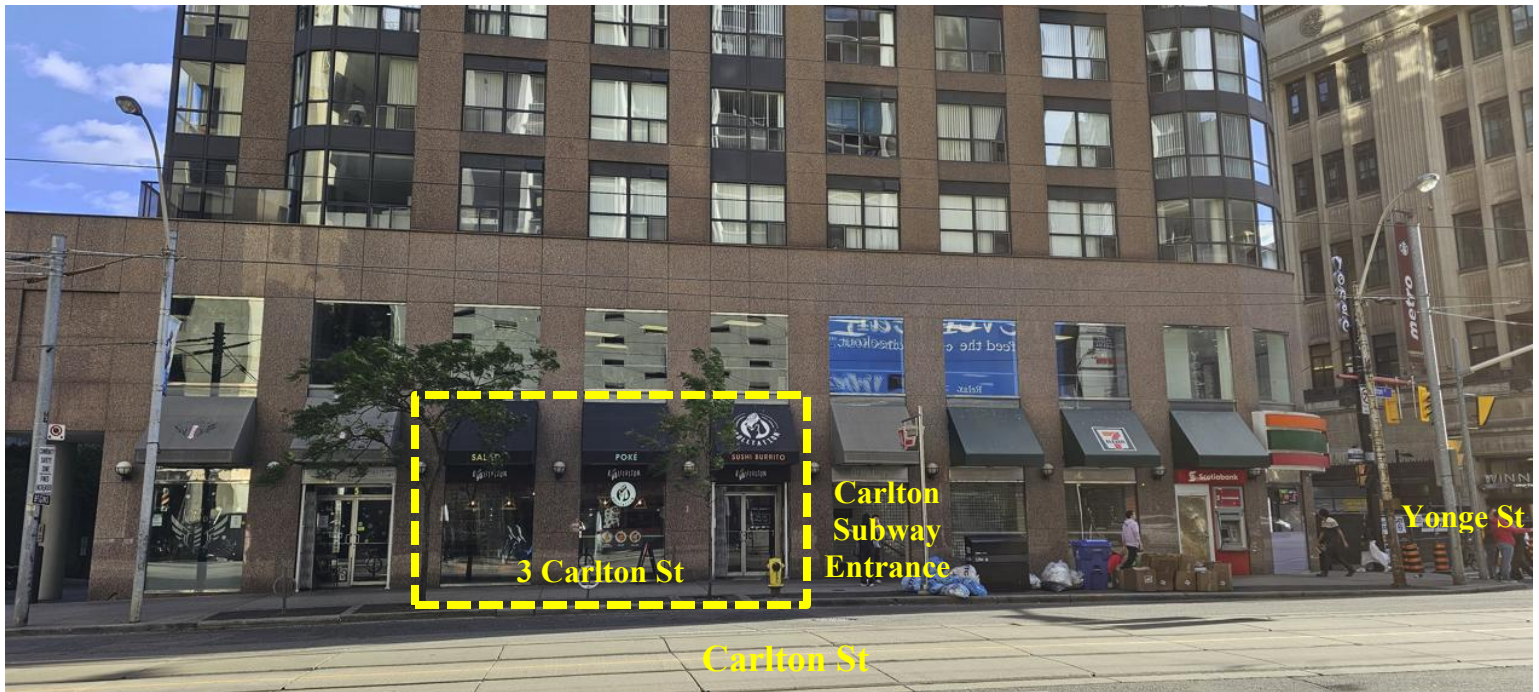


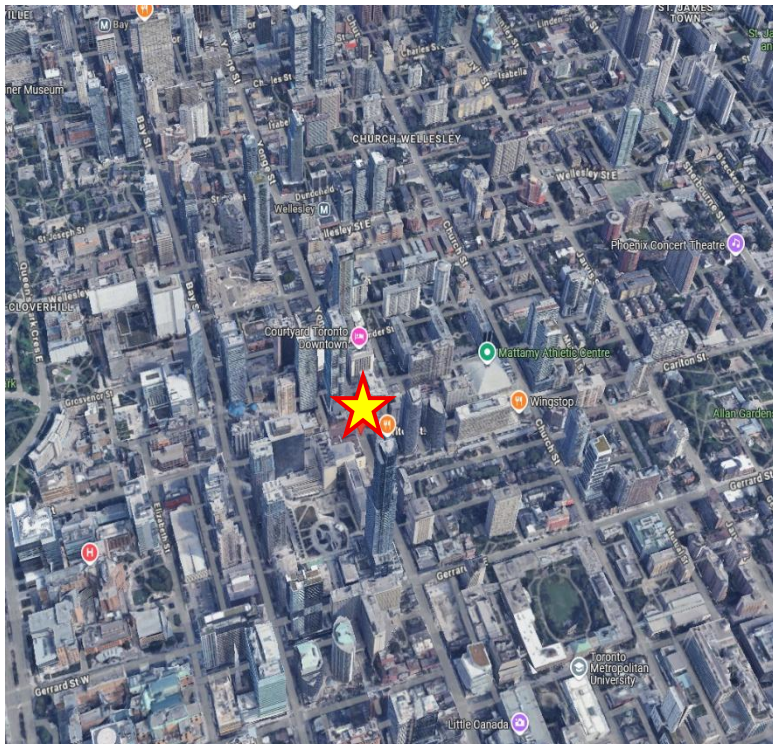
NOW LEASING

1209sf Prime Retail @ Yonge & Carlton

3 Carlton Street



Excellent 30ft Storefront & Signage Exposure @ Carlton Subway Entrance



Premises: 1209sf

Rent: NET: \$80.00/sf - TMI: \$55.27/sf (Hydro & Water incl.)

Available: 30-60 days

Highlights:

Ideal for QSR, Retail, Medical, Mini Mart or Service. Situated Immediately at the Carlton Subway Entrance & TTC. Steps to MTU (formerly Ryerson U). Neighboring World Class Real Estate & Retailers: Eaton Centre, Dundas Square, Atrium, Aura, RCB, CIBC, BMO, SCOTIA, Winners, College Park, Metro, Loblaws, Bulk Barn, Shoppers Drug Mart, Carlton Cinema, Holiday Inn express, Maple Leaf Gardens, Tokyo Smoke, McDonald, minutes to Congee Queen, Salad King, new Concord 85 storey Skyscraper, and surrounded by many Condo Buildings & Projects. High Density Commercial & Residential Area, High Level Pedestrian Traffic & Tourism.

For more information, please contact:

EMILE AMAR, Broker of Record

Email: emileamar@gmail.com

Direct: 416-841-4193

MLM Realty, Brokerage - 70 Yorkville Ave. Unit UR1 Toronto, M5R 1B9 - 416-841-4193

The information provided herein has been given to MLM Realty by others and reliable sources. We do not warrant its accuracy. You are advised to independently verify the information prior to submitting an offer and to provide for sufficient due diligence in an offer. The information contained herein may change from time to time and the Property may be withdrawn from the market at anytime without notice.