

R.S.=ROD SET
P.P.=POWER POLE
R.R.=RAILROAD
E=OVERHEAD ELECTRIC

CURVE	RADIUS	ARC LENGTH	NON-RADIAL CURVE		
			CHORD LENGTH	CHORD BEARING	DELTA ANGLE
C1	4631.66'	125.13'	125.12'	S36°24'45"E	01°32'52"

SCHEDULE B

NOTES:
1. AREA WITHIN 30' VEPCO EASEMENT=0.354 ACRES

COMMONWEALTH LAND TITLE INSURANCE COMPANY
POLICY NO. A60-0801578
DATE OF POLICY: JUNE 02, 2006 AT 9:56AM

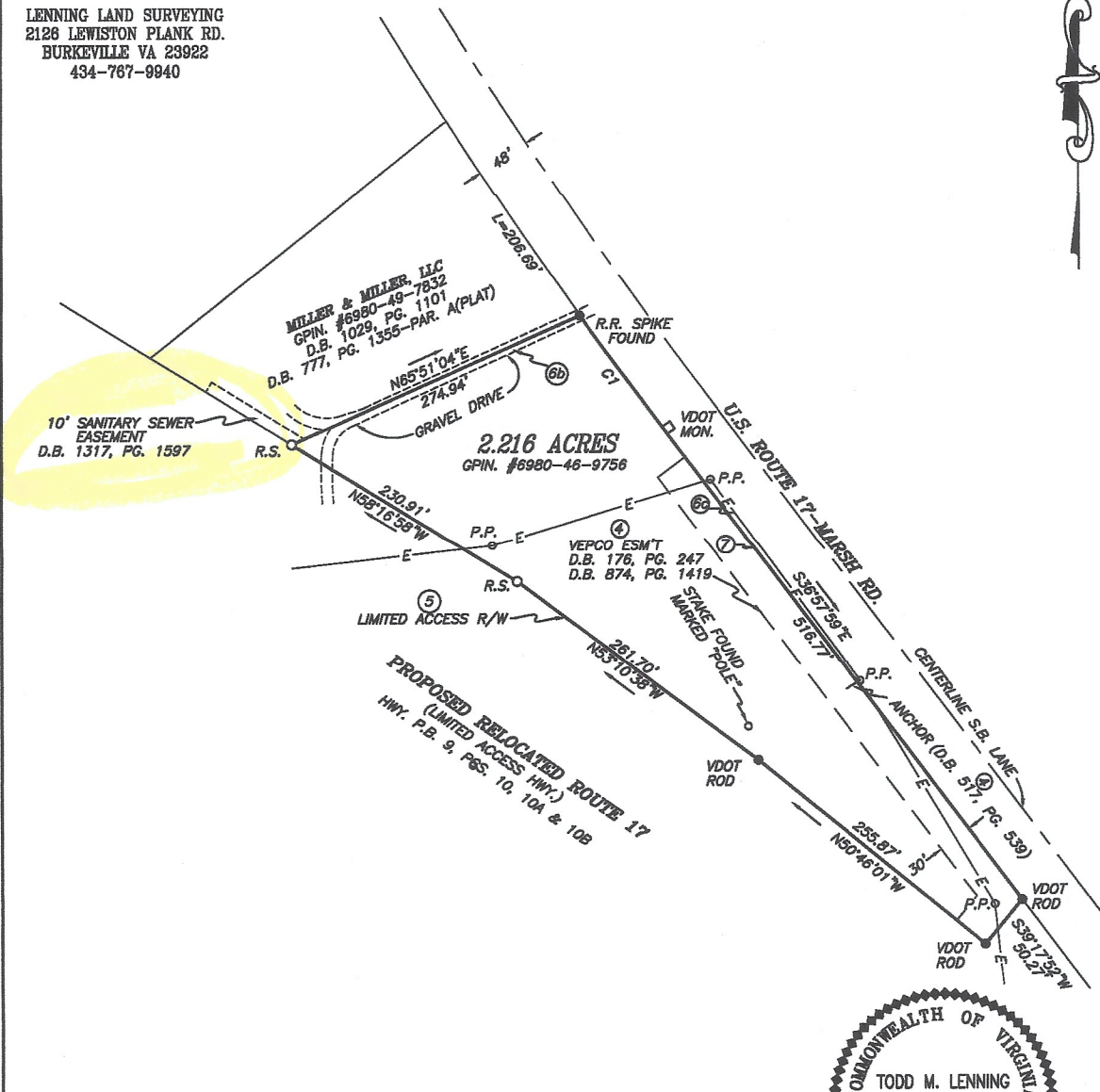
④ EASEMENT'S GRANTED VIRGINIA ELECTRIC AND POWER COMPANY;
D.B. 176, PG. 247 AND D.B. 517, PG. 539(PLOTTED HEREON).
D.B. 574, PG. 1419(PLOTTED HEREON)
D.B. 181, PG. 327(NOT PLOTTED) POLE LINE EASEMENT TO DAIRY BARN,
POWER LINE AND DAIRY BARN NO LONGER EXISTS.

⑤ EASEMENT GRANTED COMMONWEALTH OF VIRGINIA; D.B. 873, PG. 752
(PLOTTED HEREON) LIMITED ACCESS TO RELOCATED RTE. 17.

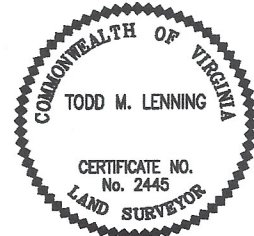
⑥ AS SHOWN ON PLAT IN D.B. 777, PG. 1355
a.) SEWER LINE(NOT PLOTTED, NONE OBSERVED)
b.) JOINT DRIVEWAY(PLOTTED HEREON)
c.) POWER LINES ALONG ROUTE 17(PLOTTED HEREON)

⑦ FRONTAGE ALONG RTE. 17 IS LIMITED ACCESS(PLOTTED HEREON)

LENNING LAND SURVEYING
2128 LEWISTON PLANK RD.
BURKEVILLE VA 23922
434-767-9940



**BOUNDARY SURVEY SHOWING 2.216 ACRES OF LAND CONVEYED
TO SOUTH COAST INVESTMENTS, LLC. IN D.B. 1218, PG. 2198**
LOCATED IN LEE MAGISTERIAL DIST.
FAUQUIER CO., VA.
1"=100' JUNE 25, 2009



JN. C-1482