

# FOR LEASE

## MEDICAL/DENTAL SUITE AVAILABLE FOR IMMEDIATE LEASE

**LEE &  
ASSOCIATES**  
COMMERCIAL REAL ESTATE SERVICES  
PASADENA



**SCAN QR CODE  
FOR VIRTUAL TOUR**

**246 W College St  
Covina, CA 91723**

**CONTACT**



**CHRIS JOHNSON**  
Senior Vice President  
chris.johnson@lee-associates.com  
626.240.2786  
License ID 01934154

All information furnished regarding property for sale, rental or financing is from sources deemed reliable, but no warranty or representation is made to the accuracy thereof and same is submitted to errors, omissions, change of price, rental or other conditions prior to sale, lease or financing or withdrawal without notice. No liability of any kind is to be imposed on the broker herein.

FOR LEASE  
**MEDICAL/DENTAL SUITE AVAILABLE  
FOR IMMEDIATE LEASE**

246  
**W COLLEGE ST**  
COVINA, CA 91723

## OFFERING INFORMATION

- + Asking Rate: \$2.00/PSF MG
- + Suite Size | 201: ±1,800 SF
- + Total Building SF: ±13,920 SF
- + Lot SF: ±20,909 SF

## PROPERTY HIGHLIGHTS

- + Medical Suite Which is Dental Ready
- + Functional Floorplan
- + Supports up to 4 Chairs



FOR LEASE  
**MEDICAL/DENTAL SUITE AVAILABLE  
FOR IMMEDIATE LEASE**

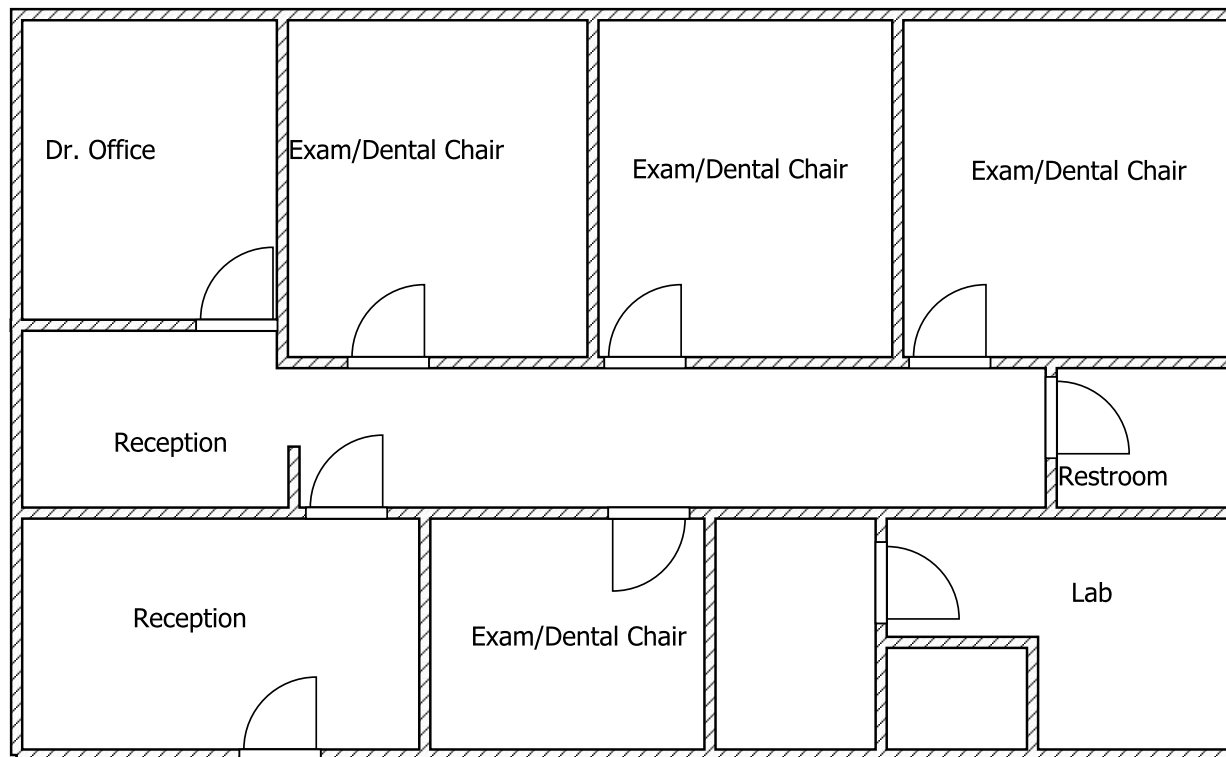
246  
**W COLLEGE ST**  
COVINA, CA 91723

**FLOOR PLAN**



**SCAN QR CODE  
FOR VIRTUAL TOUR**

**±1,800 SF**



FOR LEASE  
**MEDICAL/DENTAL SUITE AVAILABLE  
FOR IMMEDIATE LEASE**

246  
**W COLLEGE ST**  
COVINA, CA 91723

**LOCATION HIGHLIGHTS**

- + Great Access to 210 and 10 freeway
- + Located across the street from Emanant Hospital

