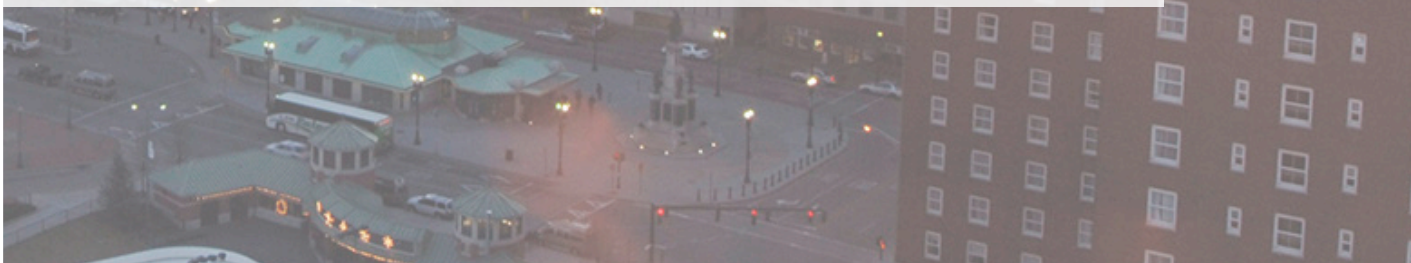


sweeney

REAL ESTATE & APPRAISAL

CONTRACTOR UNIT FOR LEASE

5800 POST ROAD WARWICK - RHODE ISLAND



One Turks Head Place, Suite 850 • Providence, Rhode Island 02903
T: 401.331.9300 • F: 401.331.9306 • www.sreari.com



EVAN STORTI | ESTORTI@SREARI.COM | 401-331-9300 | 401-585-0305

5800 POST ROAD WARWICK - RHODE ISLAND

Rental Rate: \$2,000/Month + Utilities
(Plat 214, Lot 26/02)

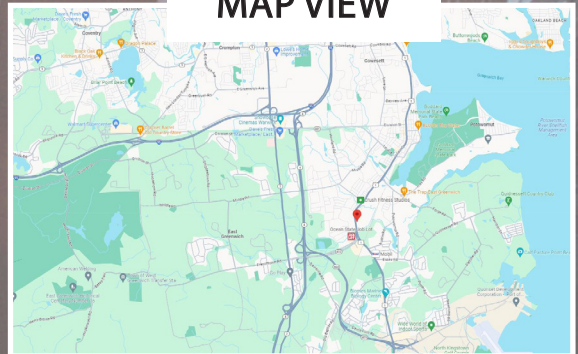
PROPERTY DETAILS

- Recently Renovated
- 1,500± SF Available
- One Overhead Door
- Private Restroom
- Small Office
- 17-20 FT Ceiling Height
- 100 AMP Service
- Zoned General Business
- Highly Traveled RT-1 Exposure
- 1 Mile from RT-4
- 5 Minutes to I-95

OFFICE SPACE



MAP VIEW



EVAN STORTI | ESTORTI@SREARI.COM | 401-331-9300 | 401-585-0305

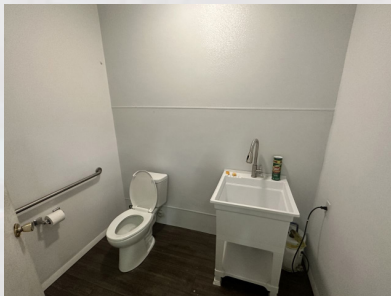
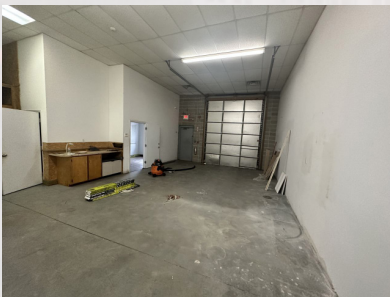
sweeney

REAL ESTATE & APPRAISAL

CONTRACTOR UNIT FOR LEASE

5800 POST ROAD WARWICK - RHODE ISLAND

ADDITIONAL PHOTOS



All information furnished regarding property for sale, rental or financing is from sources deemed reliable. But no warranty or representation is made as to the accuracy thereof and same is submitted subject to errors, omissions, change or price, rental or other conditions, prior sale lease or financing or withdrawal without notice.



One Turks Head Place, Suite 850 • Providence, Rhode Island 02903
T: 401.331.9300 • F: 401.331.9306 • www.sreari.com



EVAN STORTI | ESTORTI@SREARI.COM | 401-331-9300 | 401-585-0305