



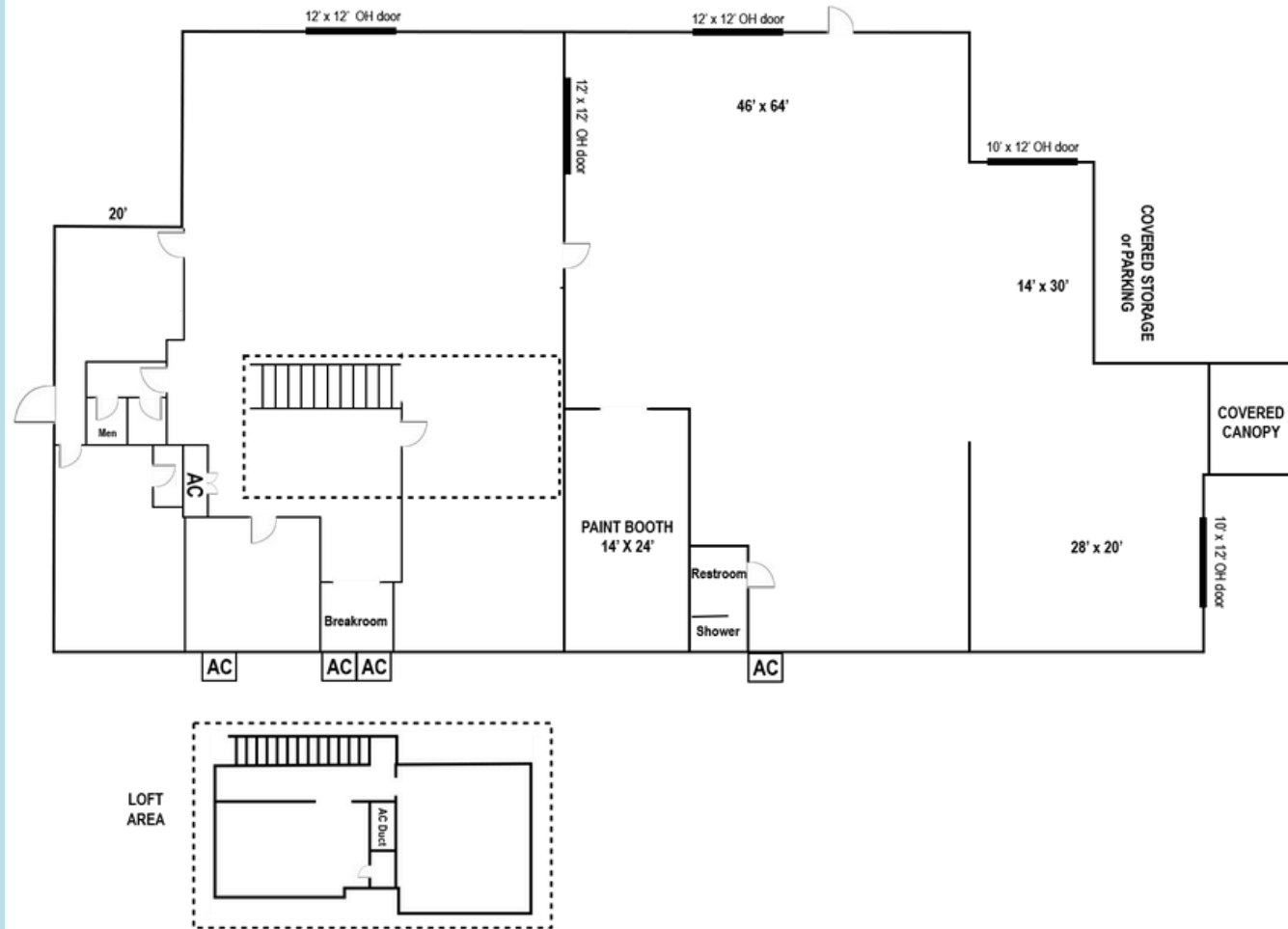
For lease

4205 St Johns Pkwy Sanford, Florida 32771
7,200 SF available

7,200 SF Industrial space for lease

Property specifications

- 7,200 SF available
- 0.47 +/- acres
- 13'6"-14'4" clear height
- 3- 12' x12' grade door
- 2- 10'x12' grade doors
- Side/rear loading
- Power - 120/240 volts, 225 amps
- Includes paint booth
- Shared fenced truck court
- Built in 1996/2004
- Zoning - RI-1 (light manufacturing)
- Call for pricing



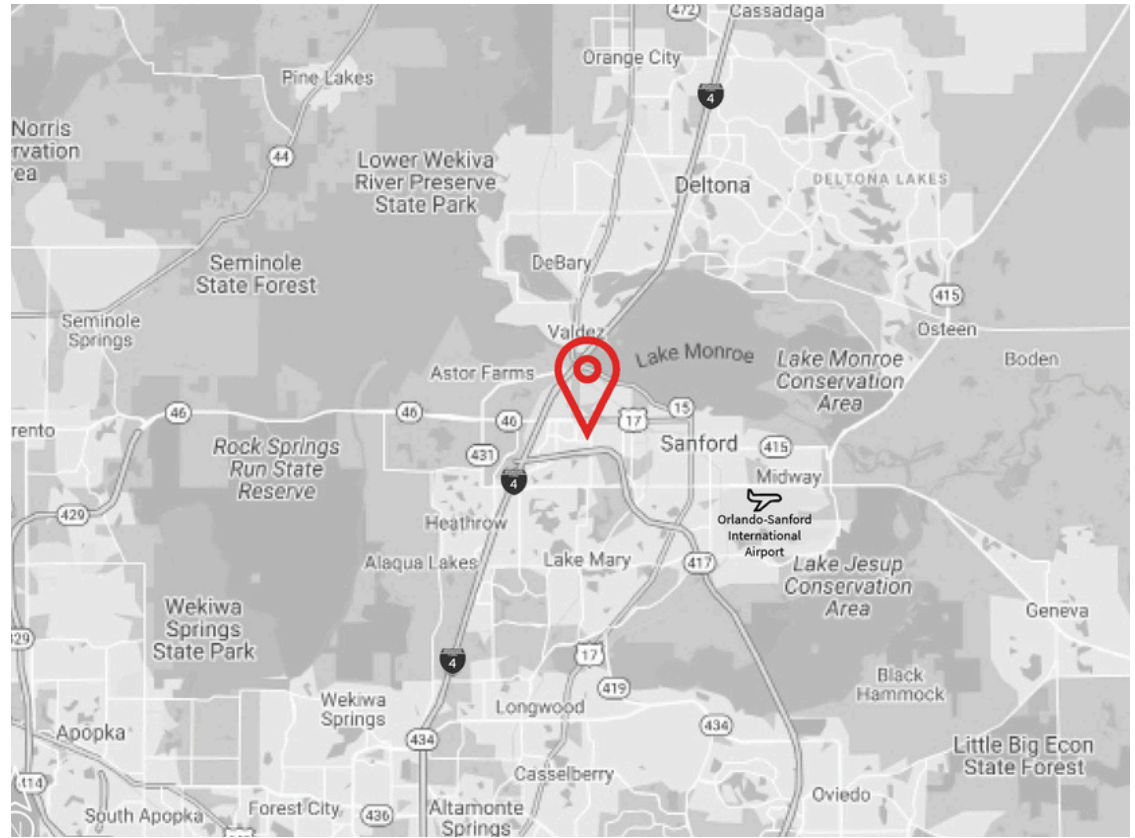
Building photos



Location

Key Distances

4205 St Johns Parkway is ideally located in the Seminole County industrial submarket approximately six minutes from State Road 417 (Central Florida Greenway), Interstate 4 and State Road 46 (W 1st St). It is five minutes to the Sanford Sunrail station and less than 15 minutes from historic downtown Sanford and the Orlando-Sanford International Airport.



Area Amenities

Area amenities include the Central Florida Zoo and Botanical Gardens, Seminole Towne Center, and numerous big box retailers and fast casual restaurants.

	30 min	60 min	90 min
Total population	1,273,913	3,466,108	5,316,544
Total households	492,813	1,325,737	2,076,622
Avg households	\$110,397	\$104,403	\$100,978
Total businesses	65,774	152,824	212,667
Total employees	702,412	212,667	2,203,267

I-4 and SR 417 access

