



Woodbranch Plaza III

12140 Wickchester Ln, Houston, TX 77079



Overview

12140 Wickchester Ln

Summary

Lease rate:	\$27.00 sf/yr (NNN)
Lot size:	7.0 acres
Building class:	A
Year built:	2014
Number of floors:	7
Parking ratio:	4.0/1,000 sf

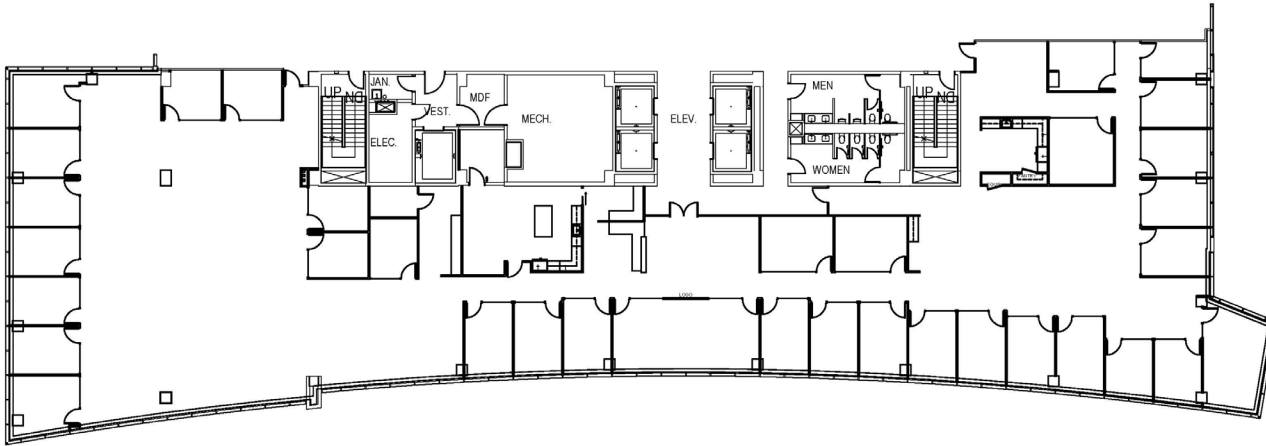
- Conveniently located in the West Houston Energy Corridor at Woodbranch and I-10
- Efficient floor plates of approximately 25,000 sf
- Accompanying 6-level garage with 700 spaces or a ratio of 4.0/1,000
- 15' ceilings in grand lobby that extend the length of the building
- Floor-to-ceiling glass
- Maple wood feature wall composed of back-lit, curved wood slats that follow the curve of the building
- Granite flooring typical throughout the lobby
- Fitness facility
- Conference facility
- On-site cafe
- Campus-like setting with outdoor seating and water features
- Designed by Kirksey, the office development is LEED Silver Certified
- Part of a four-building complex owned by Stena Realty Group



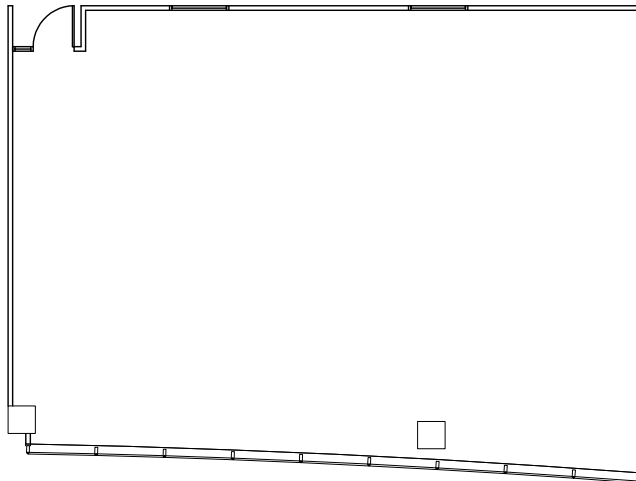
**AVISON
YOUNG**

Marti Grizzle
Vice President
+1 713 209 5809
marti.grizzle@avisonyoung.com





Suite 420
15,660 sf



Suite 550
1,744 sf



Let's talk.

Marti Grizzle
Vice President
+1 713 209 5809
marti.grizzle@avisonyoung.com

**AVISON
YOUNG**
