

# Oakmulgee Strip Center

1250-5000 SF Available

900 Meriweather, Oakmulgee, OK

For Lease Rate upon Request



## Property Description

10,000 SF new construction retail building in Okmulgee, directly across from Love's Gas Station with traffic counts of approximately 25,300 vehicles per day. Aspire Health is one of the current tenants. Up to 5,000 SF contiguous available with a 1,250 SF minimum. High-visibility, move-in-ready space suited for retail, medical, professional, or service users. TI available.

**Joanna ford**

918-381-2555

joanna@joannafordba.com

**Ryan Matthews**

918-605-2821

Ryan@Fusionpropertiesba.com





# Oakmulgee Strip Center

1250-5000 SF Available

900 Meriweather, Oakmulgee, OK

## Property Highlights

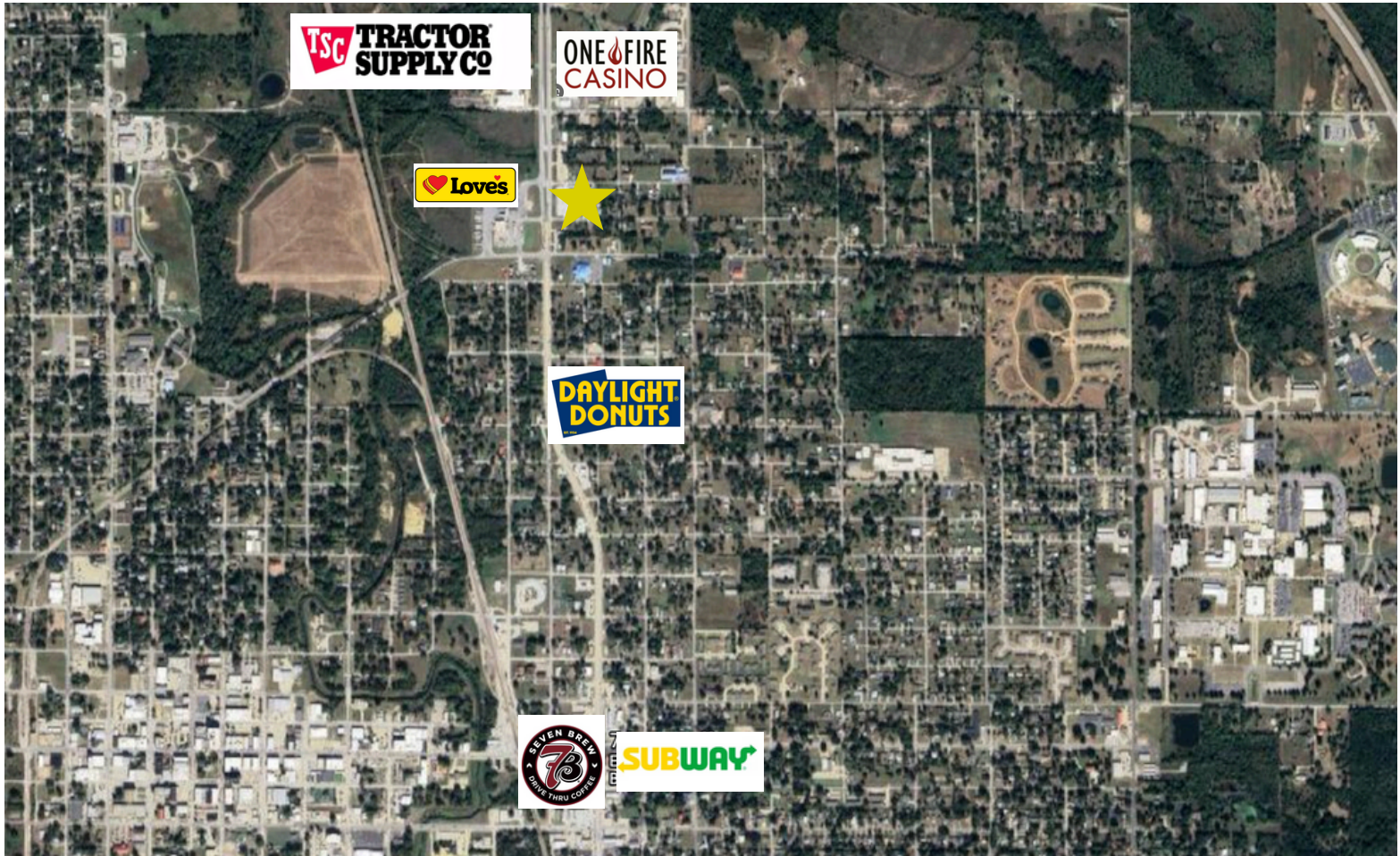
- Located Across from Loves
- 25,300 Daily Drive by's
- TI available
- Brand new Modern luxury building
- Off of HWY 75

## Suite Highlights

Delivered in Warm Shell.

14 Clear Height

Highway visible suites still available.







## Demograpics report

Okmulgee, Oklahoma is a community positioned for steady growth. With a strong local workforce, affordable cost of living, and a business-friendly environment, Okmulgee continues to attract employers and new investment. The city serves as a regional hub for surrounding rural communities and benefits from consistent traffic along major corridors serving both local residents and highway travelers. As redevelopment efforts progress and commercial activity expands, Okmulgee presents an attractive opportunity for retail, service, medical, and dining users seeking visibility, accessibility, and long-term stability.

Demographics Map Report	1 Mile	3 Miles	5 Miles
Total Population	9.3 K	15.6 K	22.4 K
Number of Employees	7.7 K	12.7 K	18 K
Average HH Income	\$ 40.6	\$ 45.9	\$ 51.4

**Joanna ford**

918-381-2555

joanna@joannafordba.com

**Ryan Matthews**

918-605-2821

Ryan@Fusionpropertiesba.com

# REALTYONEGROUP

• COMMERCIAL •