



# Professional Center Parkway Office Suite Available For Lease

24 PROFESSIONAL CENTER PARKWAY  
SAN RAFAEL, CALIFORNIA

±1,400 - 1,735 RSF      \$1.95/RSF/Month, Full Service (less PG&E)

**NEWMARK**

**Jerry Suyderhoud**  
*Senior Managing Director*  
t 415-526-7660  
CA RE Lic. #00633998  
jerry.suyderhoud@nmrk.com

**Joe McCallum**  
*Associate*  
t 415-526-7672  
CA RE Lic. #02048815  
joe.mccallum@nmrk.com



## PROFESSIONAL CENTER PARKWAY

24 Professional Center Parkway is a well maintained multi-tenant office building located in beautiful North San Rafael. The building is amidst a wonderful natural setting and its design blends indoor and outdoor features seamlessly, with parking located below the building. The building is elevator served and the zoning of Office (O) in the City of San Rafael allows for an array of potential uses including medical.

## Suite Description



### ±1,735 RSF

- \$1.95/RSF/Month, Full Service (less PG&E)
- Available 30-day notice
- Four private offices
- Large conference room
- Admin / reception area
- Kitchenette / break area



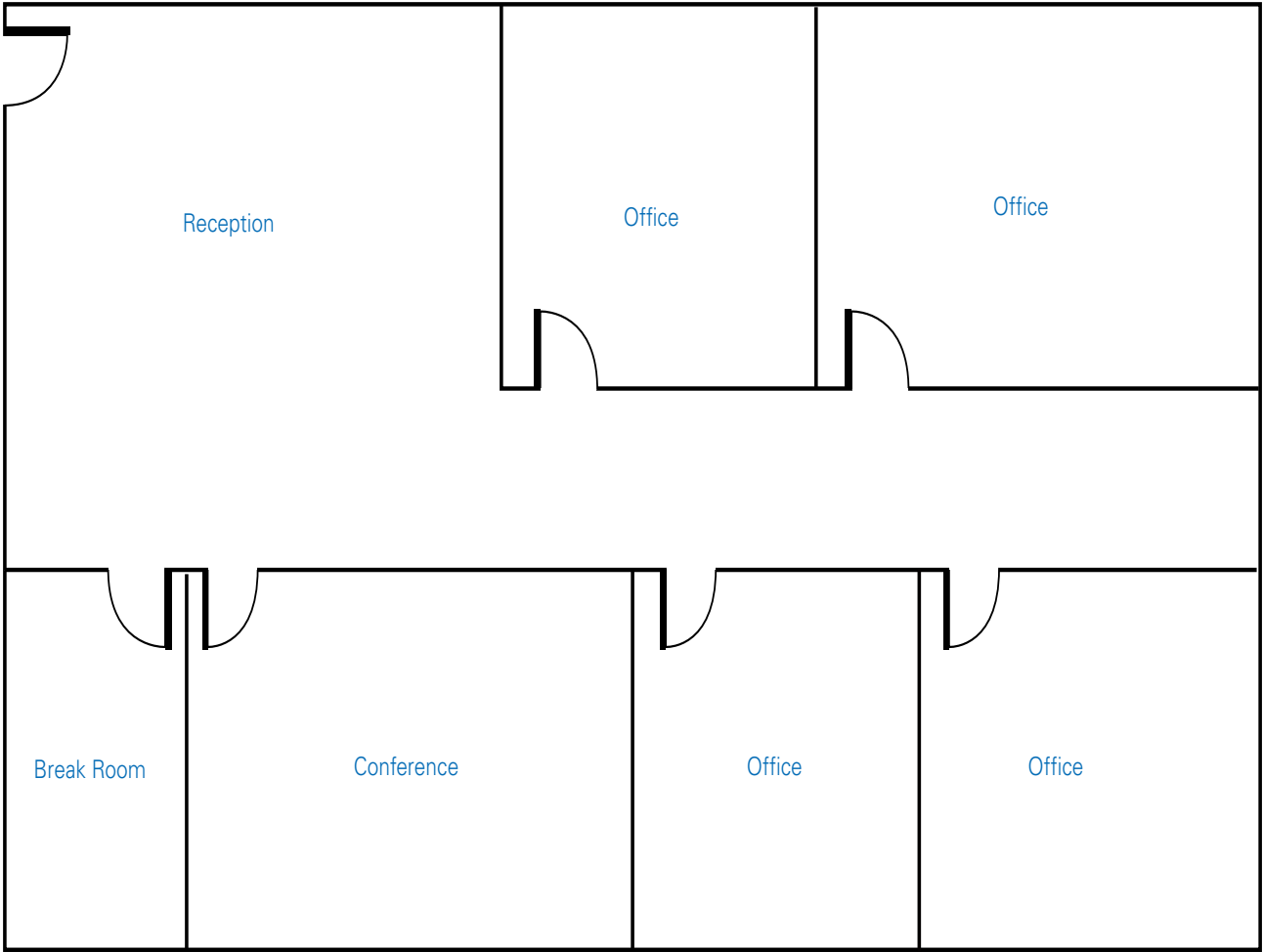
### ±1,400 RSF

- \$1.95/RSF/Month, Full Service (less PG&E)
- Available now
- Four private offices
- Open work area
- Kitchenette / storage area
- Private top floor suite



PROFESSIONAL CENTER PARKWAY

Floor Plan - Suite 150



Measurements are approximate.  
Not to scale.



PROFESSIONAL CENTER PARKWAY

Photo Gallery





PROFESSIONAL CENTER PARKWAY

Nearby Amenities



Northgate I



Walgreen's  
Big 5  
Sporting Goods  
Xfinity  
Magic Flute  
Round Table Pizza  
Calgang Thai  
Eatery

Silbermann's  
Ice Cream  
Bagel Street Cafe  
Sonoma Taco Shop  
Great Clips  
FEDEX  
Starbucks  
Safeway

Northgate Mall



Chipotle  
Mi Pueblo  
Roadside BBQ  
Panda Express  
Peet's

Macy's  
Kohl's  
HomeGoods  
Rite Aid  
LensCrafters  
RH Outlets  
Century Theatres

Northgate III



Black Bear Diner  
Pak Mail  
CVS  
Michael's  
Sourdough & Co.  
The Habit  
Bank of Marin



---

# 24 Professional Center Parkway

## San Rafael, California

---

*Prepared by:*

**Jerry Suyderhoud**  
*Senior Managing Director*  
t 415-526-7660  
CA RE Lic. #00633998  
jerry.suyderhoud@nmrk.com

**Joe McCallum**  
*Associate*  
t 415-526-7672  
CA RE Lic. #02048815  
joe.mccallum@nmrk.com

1101 Fifth Avenue  
Suite 370  
San Rafael, CA 94901  
415-526-7676

**nmrk.com**

The distributor of this communication is performing acts for which a real estate license is required. The information contained herein has been obtained from sources deemed reliable but has not been verified and no guarantee, warranty or representation, either express or implied, is made with respect to such information. Terms of sale or lease and availability are subject to change or withdrawal without notice. Last updated May 21, 2025 1:55 PM

**NEWMARK**