



**COMMERCIAL
REAL ESTATE**
the sign of a profitable property



THREE STORY PROFESSIONAL OFFICE BUILDING

7136 Haskell Ave, Van Nuys, CA 91406



**COMMERCIAL
REAL ESTATE**

ARMEN TCHAPANIAN
(818) 697-9362 | armen@illicre.com
DRE#02041876



5945 CANOGA AVENUE, WOODLAND HILLS, CA 91367 - 818.501.2212/PHONE - www.illicre.com - DRE #01834124

PROPERTY FEATURES

7136 Haskell Ave, Van Nuys, CA 91406







APPROX. 600-2,500 SF

OFFICE SPACES AVAILABLE

- ✓ On-site security
- ✓ Three-story professional office building
- ✓ Suite 3: can be modified to accommodate different space requirements
- ✓ Free parking at a ratio of 3 spaces per 1,000 USF
- ✓ Newly paved parking lot
- ✓ In-suite janitorial services are not included
- ✓ Elevator access

AREA AMENITIES

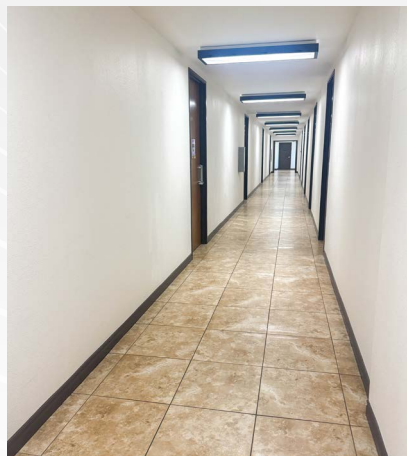
- ✓ Strategically located at Haskell Ave & Sherman Way
- ✓ Minutes to restaurants & within one mile of coffee shops
- ✓ Excellent freeway access to the 405 & 101 on/off ramps
- ✓ Prime Central Valley location

— DEMOGRAPHICS	1 MILE	3 MILE	5 MILE
 Population	41,299	304,824	728,081
 Avg. HH Income	\$78,329	\$87,727	\$100,197
 Daytime Pop	40,688	299,762	715,877
 Traffic Count	± 71,459 CPD ON HASKELL AVE & SHERMAN WAY		

OFFICE SPACES
VAN NUYS, CA

INTERIOR PHOTOS

7136 Haskell Ave, Van Nuys, CA 91406



SUITE 1

OFFICE SPACES
VAN NUYS, CA

INTERIOR PHOTOS

7136 Haskell Ave, Van Nuys, CA 91406





AERIAL MAP



COMMERCIAL
REAL ESTATE

ARMEN TCHAPANIAN
SENIOR ASSOCIATE

(818) 697-9362 | armen@illicre.com
DRE#02041876



5945 CANOGA AVENUE | WOODLAND HILLS, CA 91367 | 818.501.2212/PHONE | www.illicre.com | DRE #01834124

This information has been secured from sources we believe to be reliable, but we make no representations or warranties, expressed or implied, as to the accuracy of the information. References to square foot-age are approximate. References to neighboring retailers are subject to change, and may not be adjacent to the vacancy being marketed either prior to, during, or after leases are signed. Lessee must verify the information and bears all risk for any inaccuracies.