

3501 Hart Ave, Rosemead
CA 91770 6,000
SF Available



Elevate Crest Properties is proud to exclusively present 3501 Hart Ave, Rosemead, a 6,000 SF retail/office space strategically located in a high-traffic shopping center surrounded by major national retailers such as LA Fitness, Target, IHOP, PetSmart, and Ross. This prime location offers exceptional visibility with direct exposure to the I-10 Freeway, ensuring maximum exposure and easy accessibility for both local and commuter traffic. The space features a versatile layout with multiple private offices and a large open area, providing flexibility for a variety of business operations. Situated within a thriving retail hub, the property benefits from strong consumer foot traffic, ample on-site parking, and a dynamic commercial environment, making it a rare opportunity for businesses seeking a prominent presence in the market. For more information or to schedule a private tour, contact Elevate Crest Properties today.

3501 Hart Ave, Rosemead – 6,000 SF Retail/Office

- ✓ Prime Location – High-traffic shopping center near Target, LA Fitness, IHOP & more
- ✓ High Visibility – Direct I-10 Freeway exposure for maximum traffic
- ✓ Versatile Layout – Private offices + open area for flexible use
- ✓ Ample Parking – Convenient on-site parking
- ✓ Strong Foot Traffic – Surrounded by major national retailers

ELEVATE CREST PROPERTIES

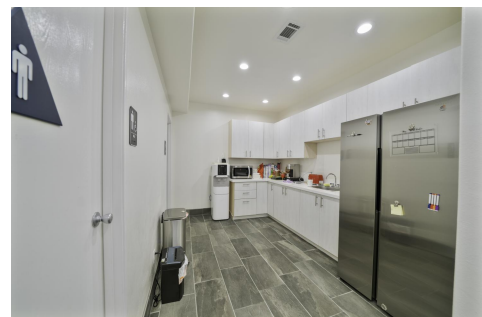
VIVIAN WANG
909 612 9988
LIC# 01953478
CORP#02247212



FOR
LEASE



PROJECT PICTURE

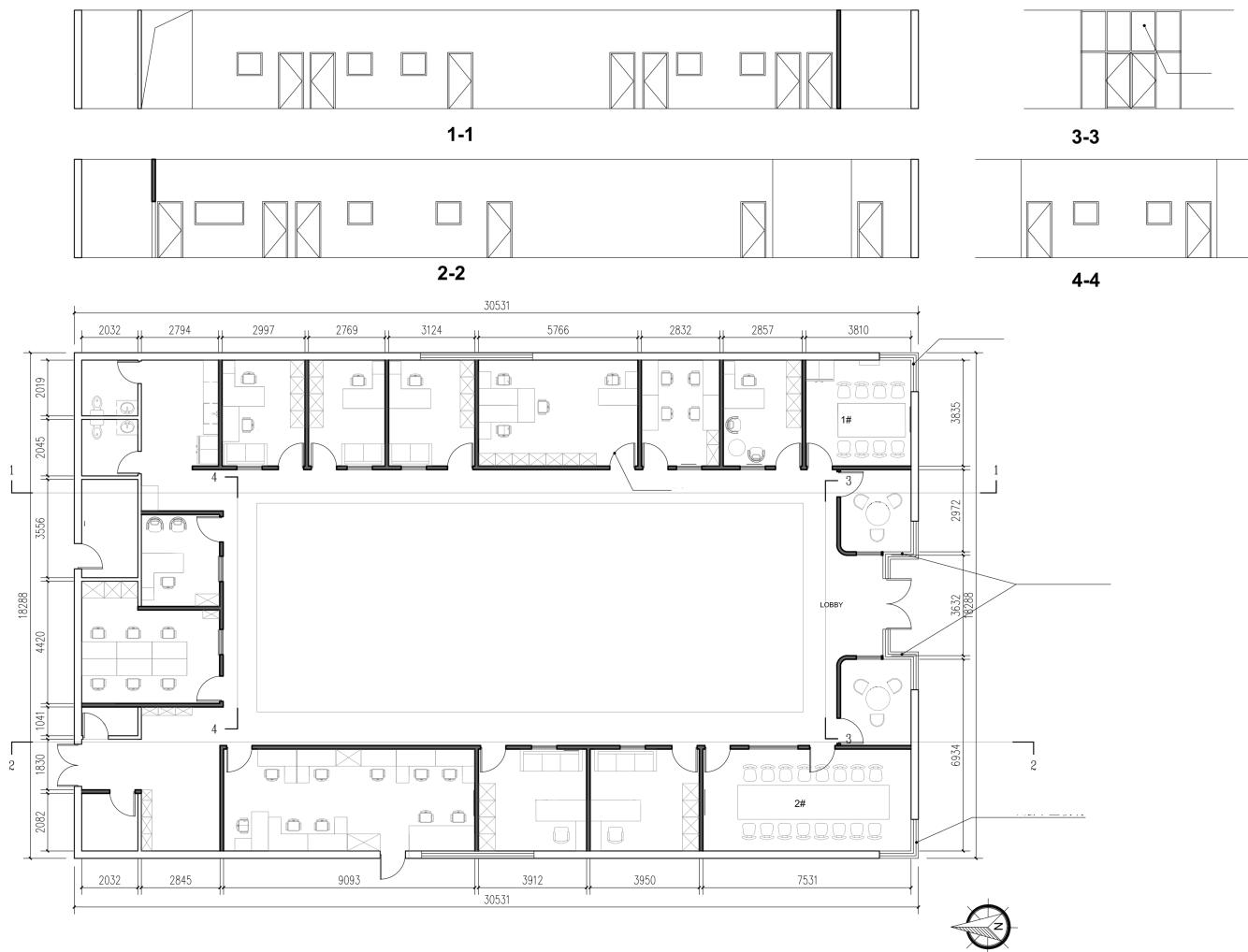


Vivian Wang
O: 909 612 9900
M: 310 990 6042
E-mail: Vivian.Wang@EC-Property.com

Elevate Crest Properties

Address: 22632 Golden Springs Dr #270,
Diamond Bar, CA 91765

FLOOR PLAN



Vivian Wang

O: 909 612 9900

M: 310 990 6042

E-mail: Vivian.Wang@EC-Property.com

Elevate Crest Properties

Address: 22632 Golden Springs Dr #270,
Diamond Bar, CA 91765