

## Vienna Courts



### Summary

#### Upper Level Suite

- Suite 9-C:
- Very large, bright office with two sides of windows 373 SF
- Lease rate \$750/month

#### Courtyard Level Suite

- Suite 7-A
- 648 SF, Two windowed offices with reception area – will lease office separately
- Lease rate: \$615-\$1230/month

### Property Highlights

- Built Out & Ready to Occupy
- Attractive Building
- Lots of Parking
- Short term leases acceptable

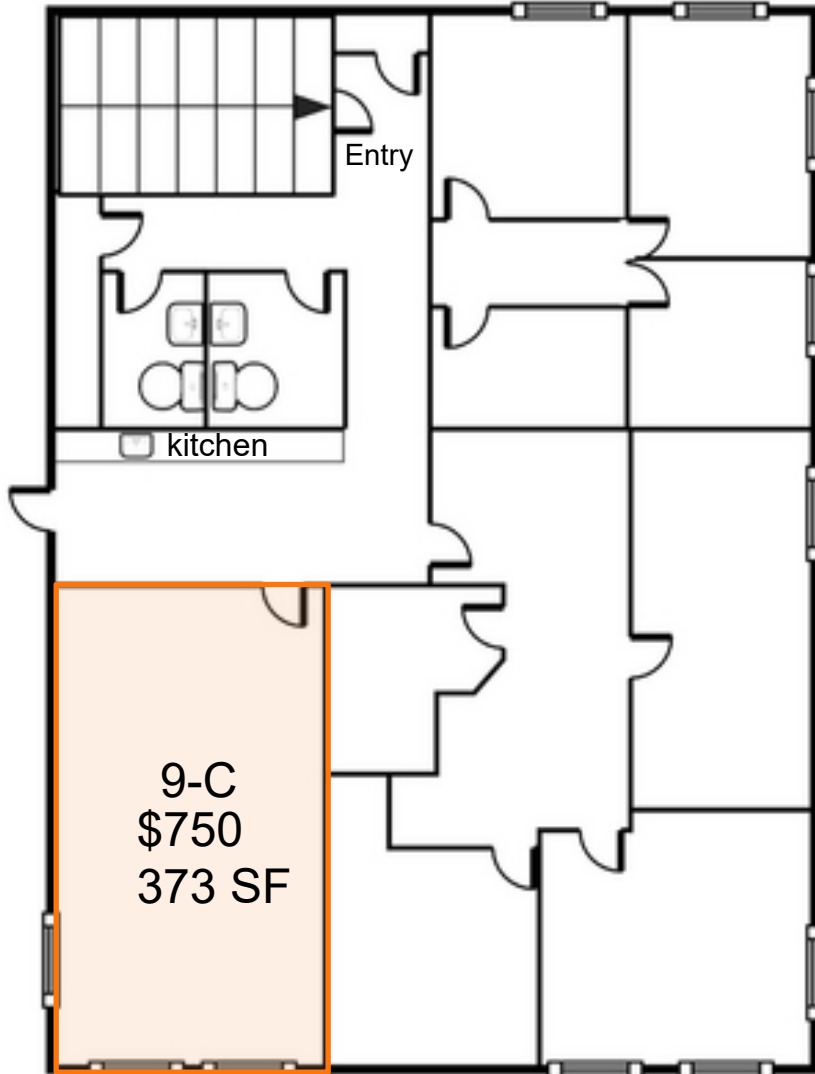


The information above was furnished to us by sources we believe to be reliable, but no warranty or representation is made to its accuracy. It is your responsibility to independently confirm its accuracy and completeness. This offering is subject to correction or errors and omissions, change of pricing, prior to sale/lease or withdrawal from the market, without notice.

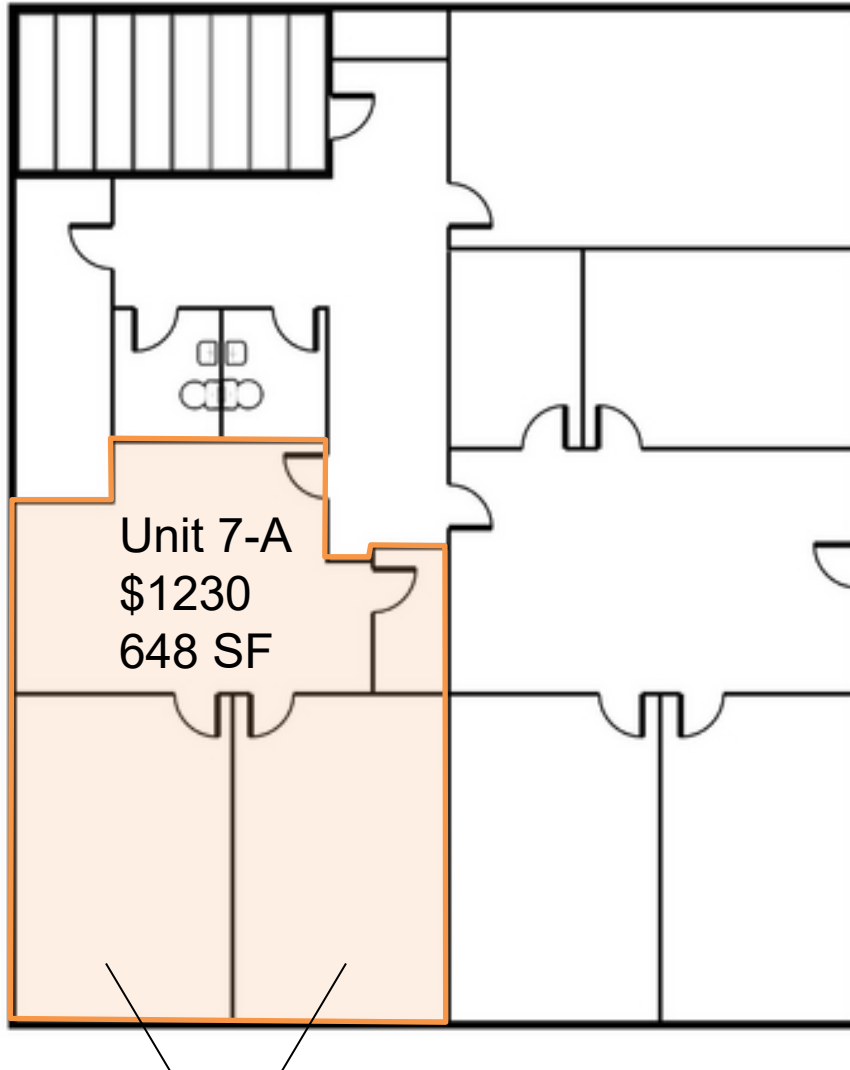
**Barbara Bechtle**  
703.435.4007 x 106  
bbechtle@veritycommercial.com

**Ellie Bechtle**  
703.435.4007 x 107  
ebechtle@veritycommercial.com

Floor Plan



Floor Plan



Will lease offices separately with shared reception for \$615 each

