

**Sublease or Direct Deal**  
1516 Jabez Run, Building A, Millersville, MD

**Available  
Immediately**



**SUMMIT**  
COMPANIES

**Suite 100 - 12,528 SF**  
**Building SF 15,868 SF**

**JLL Baltimore Industrial Team**



Dominic Digiovannantonio  
443 452 1505  
dom.digi@jll.com

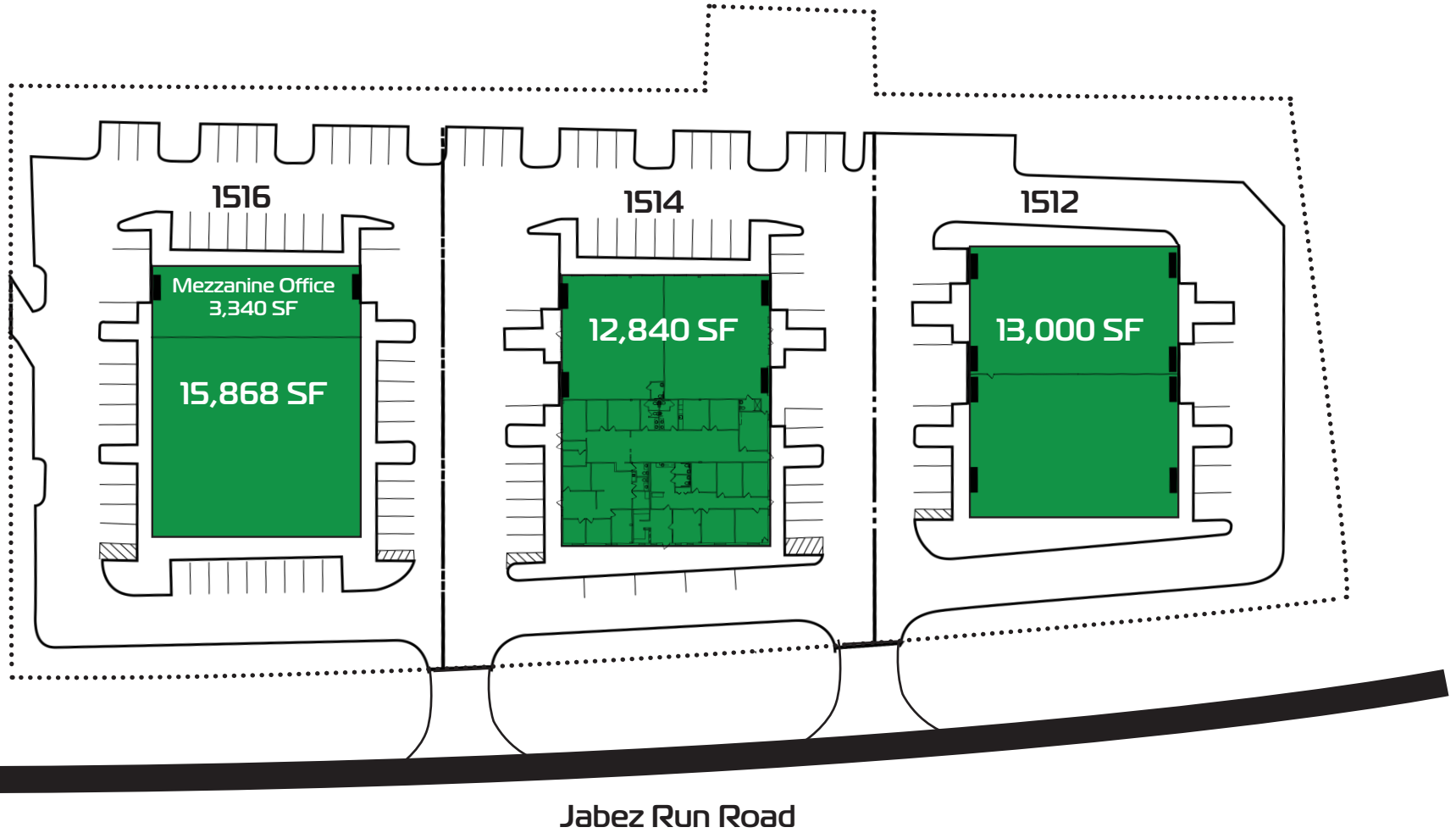
Ryan Burrows  
443 452 1514  
ryan.burrows@jll.com

# Property Highlights

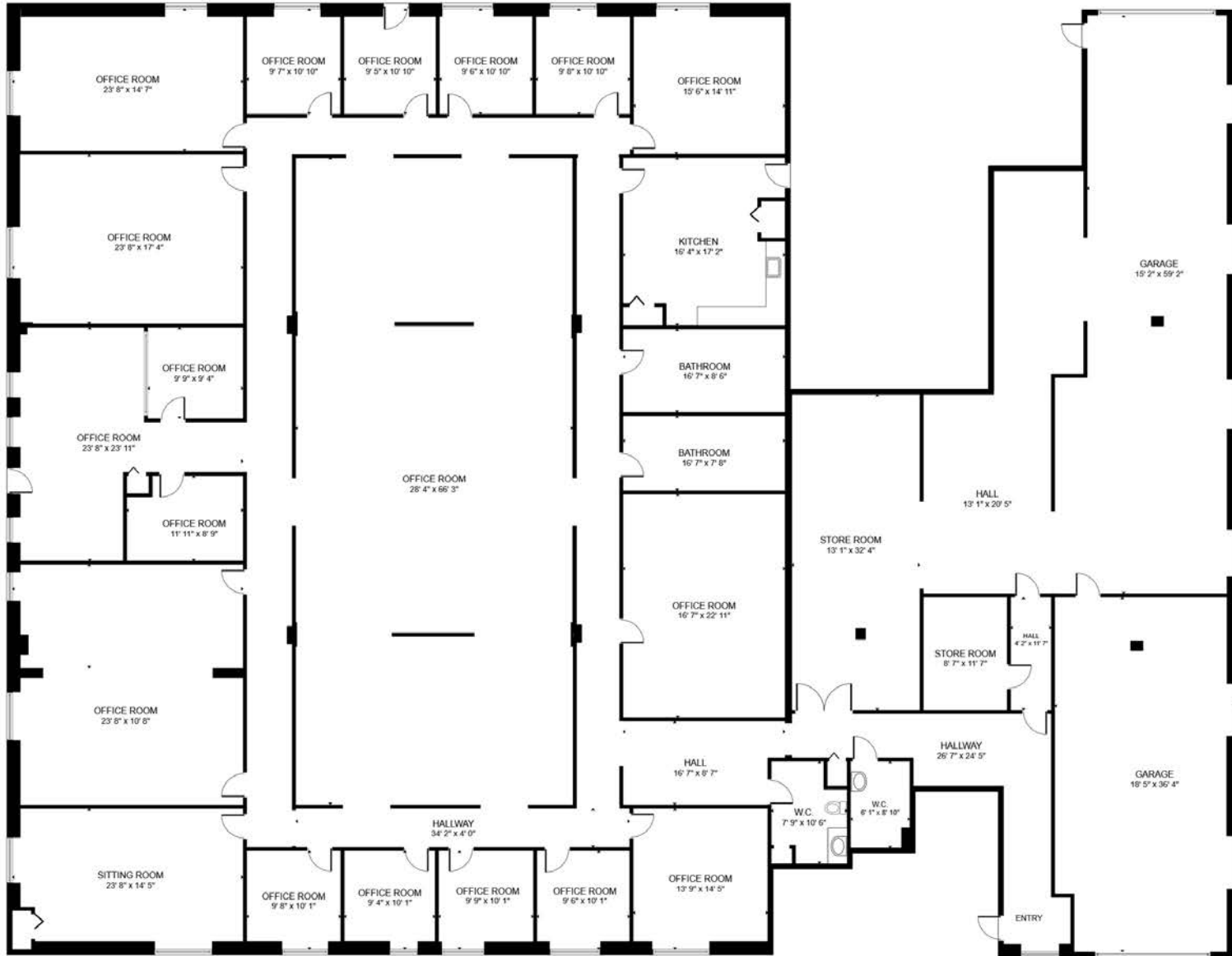
- Sublease or Direct Deal
- (Sublease runs through 3/31/2025)
- 12,528 SF
- 90% office
  - 12 private offices
  - 16 workstation bullpen
  - Break room/kitchen
  - Large divisible conference room
  - Warehouse & plenty of storage
- 2 drive-in doors
- Great access to Annapolis, D.C., and Baltimore



# Site Plan



# Floor Plan

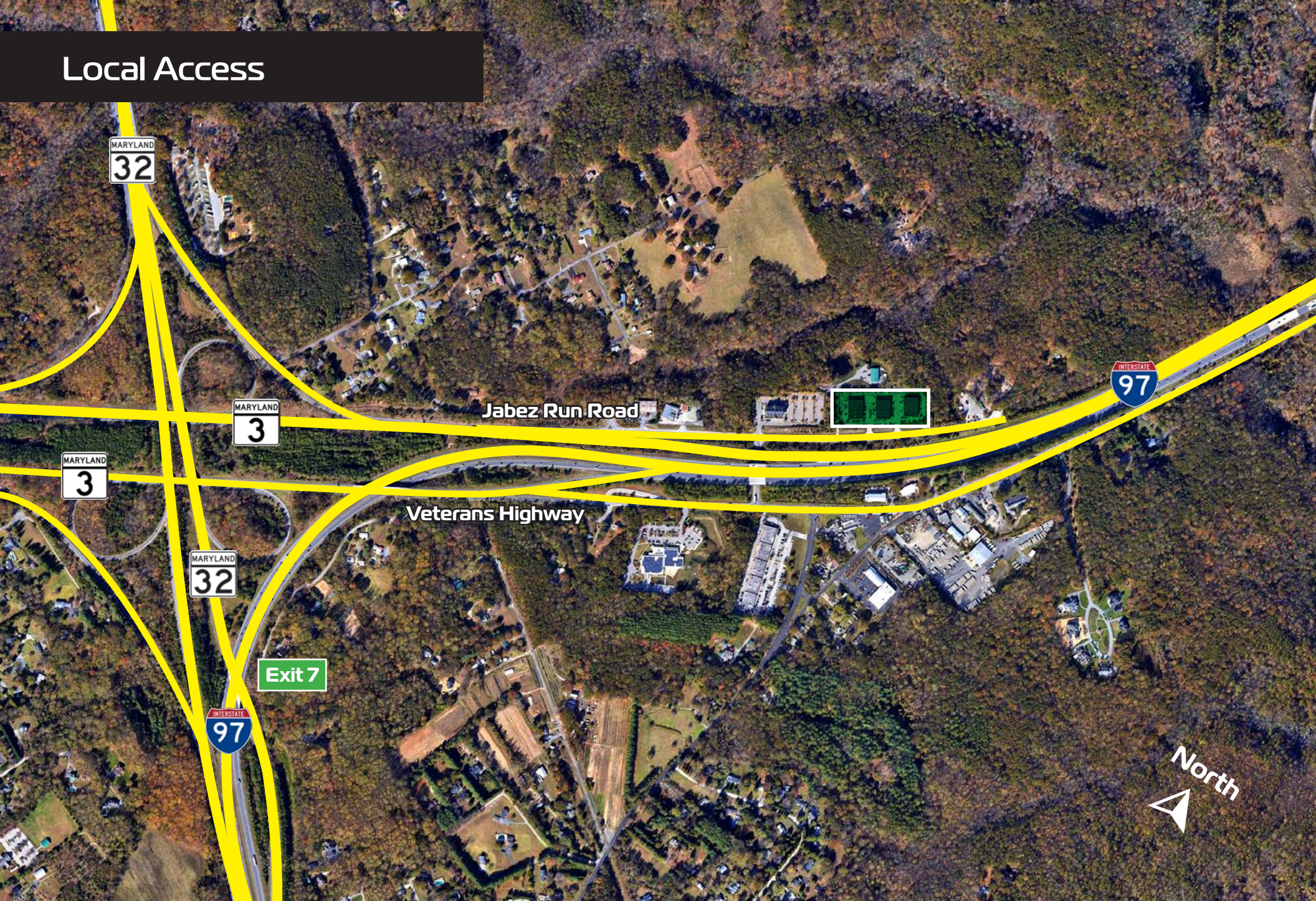


FLOOR PLAN

# Photos



# Local Access



# Regional Access



1516 Jabex Run Road





For more information, please contact:

Dominic Digiovannantonio

443 452 1505

[dom.digi@jll.com](mailto:dom.digi@jll.com)

Ryan Burrows

443 452 1514

[ryan.burrows@jll.com](mailto:ryan.burrows@jll.com)



Although information has been obtained from sources deemed reliable, neither Owner nor JLL makes any guarantees, warranties or representations, express or implied, as to the completeness or accuracy as to the information contained herein. Any projections, opinions, assumptions or estimates used are for example only. There may be differences between projected and actual results, and those differences may be material. The Property may be withdrawn without notice. Neither Owner nor JLL accepts any liability for any loss or damage suffered by any party resulting from reliance on this information. If the recipient of this information has signed a confidentiality agreement regarding this matter, this information is subject to the terms of that agreement. ©2021. Jones Lang LaSalle IP, Inc. All rights reserved.