

EXCLUSIVE LISTING 12 CROSBY STREET



12 CROSBY STREET

**BEAUTIFUL STORE ON SOHO'S
MOST ICONIC BLOCK WITH RICK OWENS,
MAISON MARGIELA, AND BDDW**

LOCATION Between Grand &
Howard Streets

AREA (approx.) Ground Floor +/- 4,100 RSF
Basement +/- 2,000 RSF

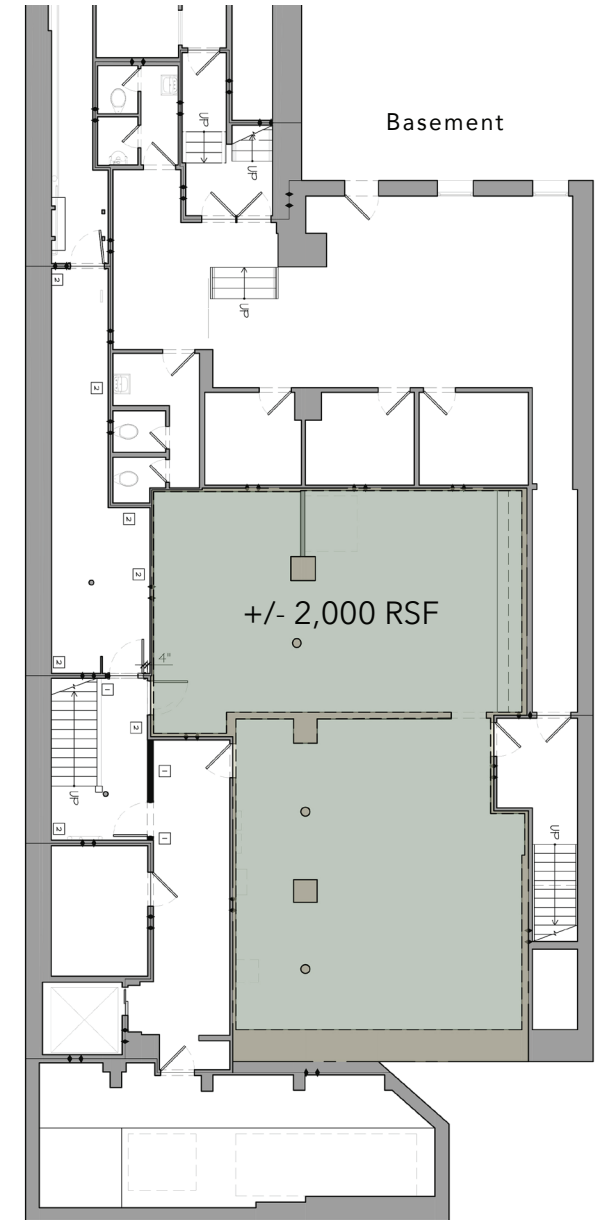
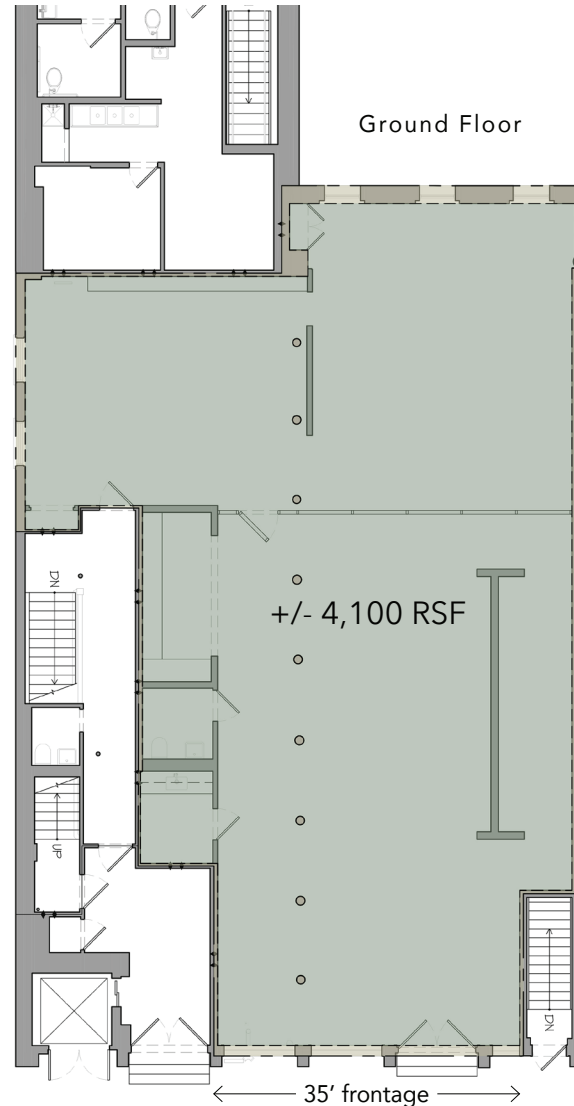
FRONTAGE 35'

CEILING HEIGHTS Ground Floor 12' finished
Basement 11'

POSSESSION September 1, 2025;
possibly sooner

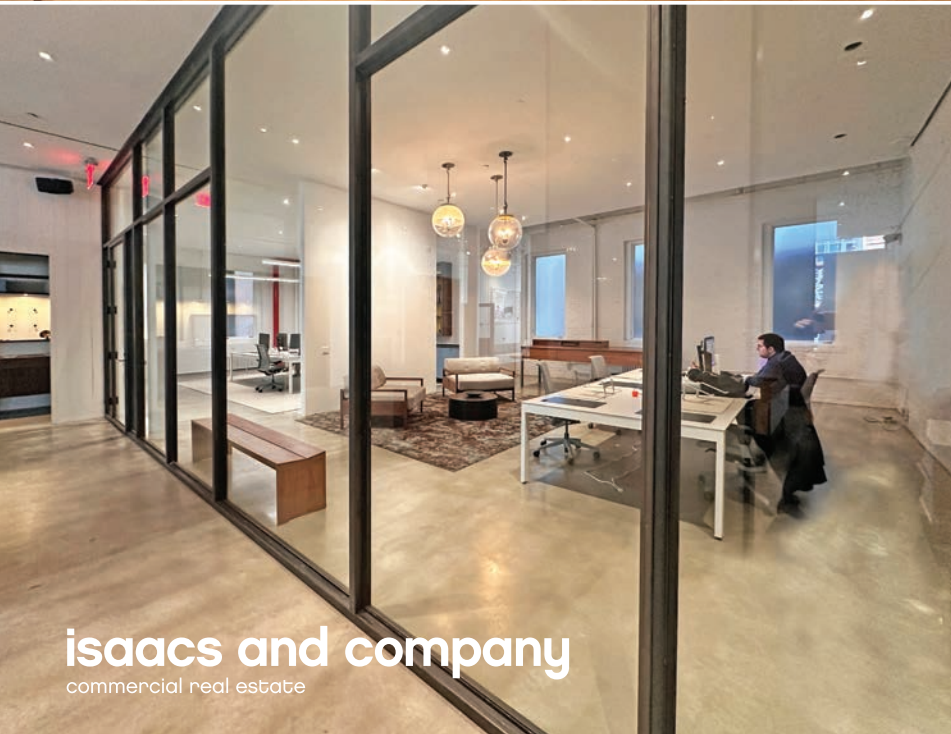
- COMMENTS**
- Institutionally owned and managed
 - Modernized building systems
 - Office/Storage/Workshop Basement
 - Less than a 10-minute walk from 15 different subway lines

A C E B D F M N Q R W J Z 1 6



12 CROSBY STREET

Ground Floor



12 CROSBY STREET



