



Industrial Property For Sale Or Lease, Available: 20,000 sq. ft.
305 Suburban Ave, Deer Park



Specifications:

Building Size: 20,000 sq. ft.
Lot Size: 1.10 Acres
Office Space: 3,500 sq. ft.
Ceiling Height: 16.0'
Loading: 1 Dock(s), 3 Drive-in(s)
Power: 2,000 + 1,600 amps
A/C: Full A/C
Parking: 48

Pricing and Timing:

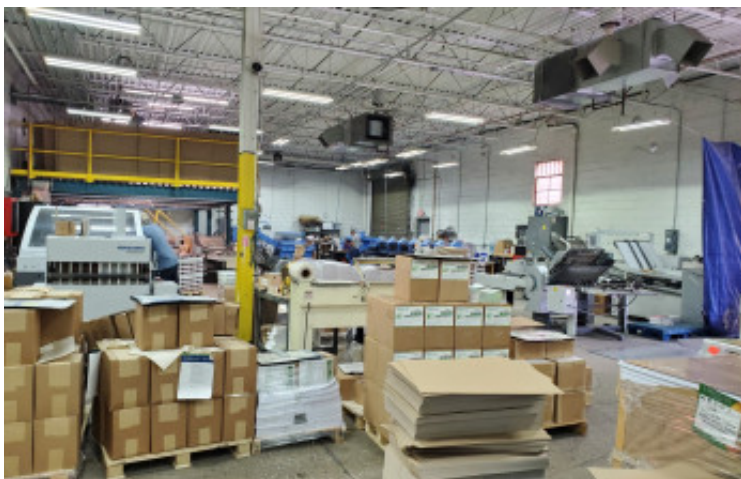
Occupancy: March 2025
Sale Price: Call for Price
Lease Price: \$12.50/sq. ft. Net
Taxes: \$49,441.00
(\$2.47/sq. ft.)

* IDA Tax Benefits Possible *

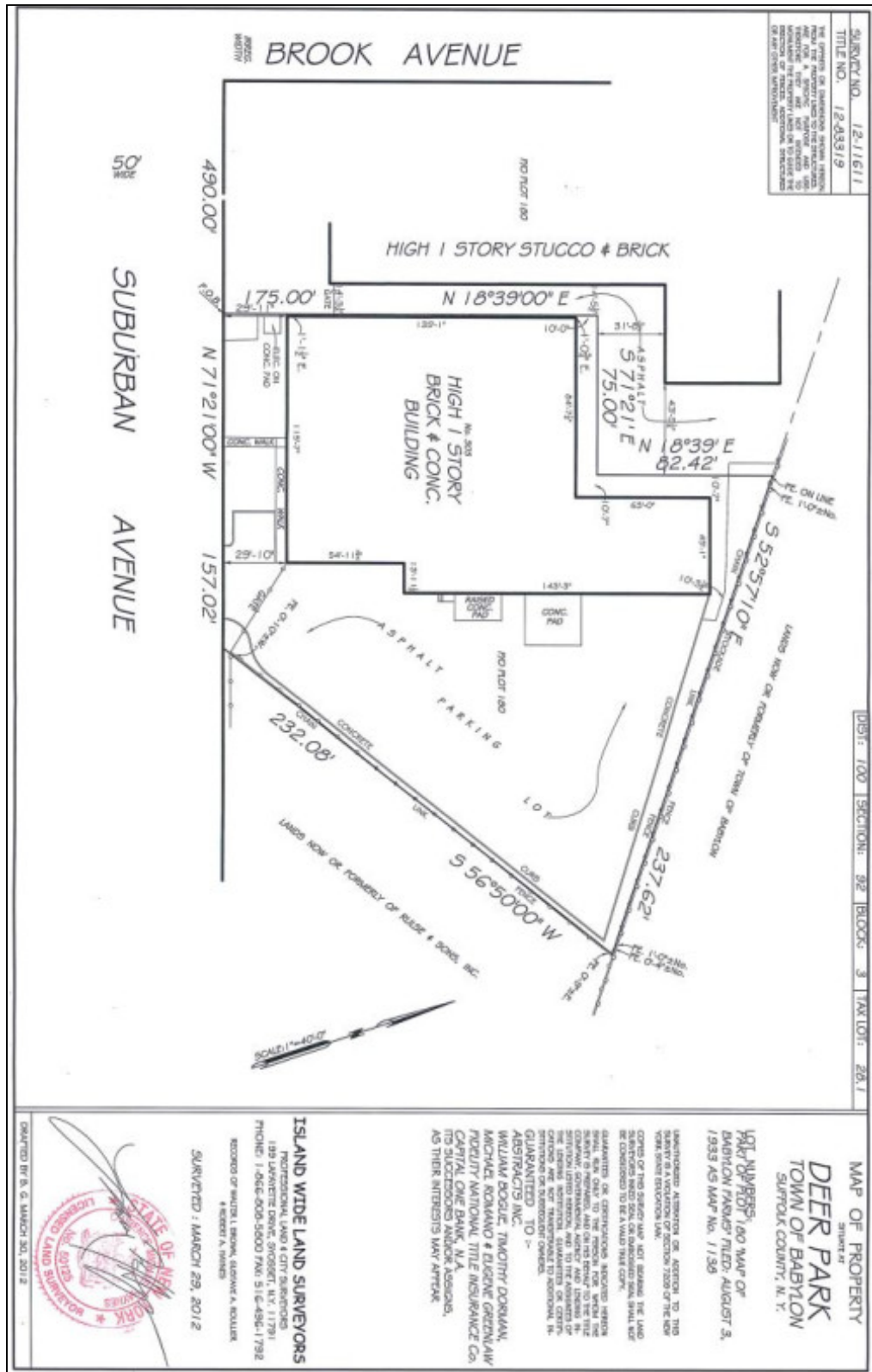
20,000sf building with over an acre of land and ample parking • Fully air conditioned • Heavy power with two electrical services at 2000 + 1600 amps

Ralph Perna, Associate RE Broker
516-524-8060 (cell)
631-293-3700 x46
rp@schackerrealty.com

Luca Perinuzzi, RE Salesperson
917-710-3236 (cell)
631-293-3700 x21
lp@schackerrealty.com



All information is subject to errors, omissions, modification, and withdrawal. Measurements may be estimates and information shown should not be relied upon without independent verification.



All information is subject to errors, omissions, modification, and withdrawal. Measurements may be estimates and information shown should not be relied upon without independent verification.