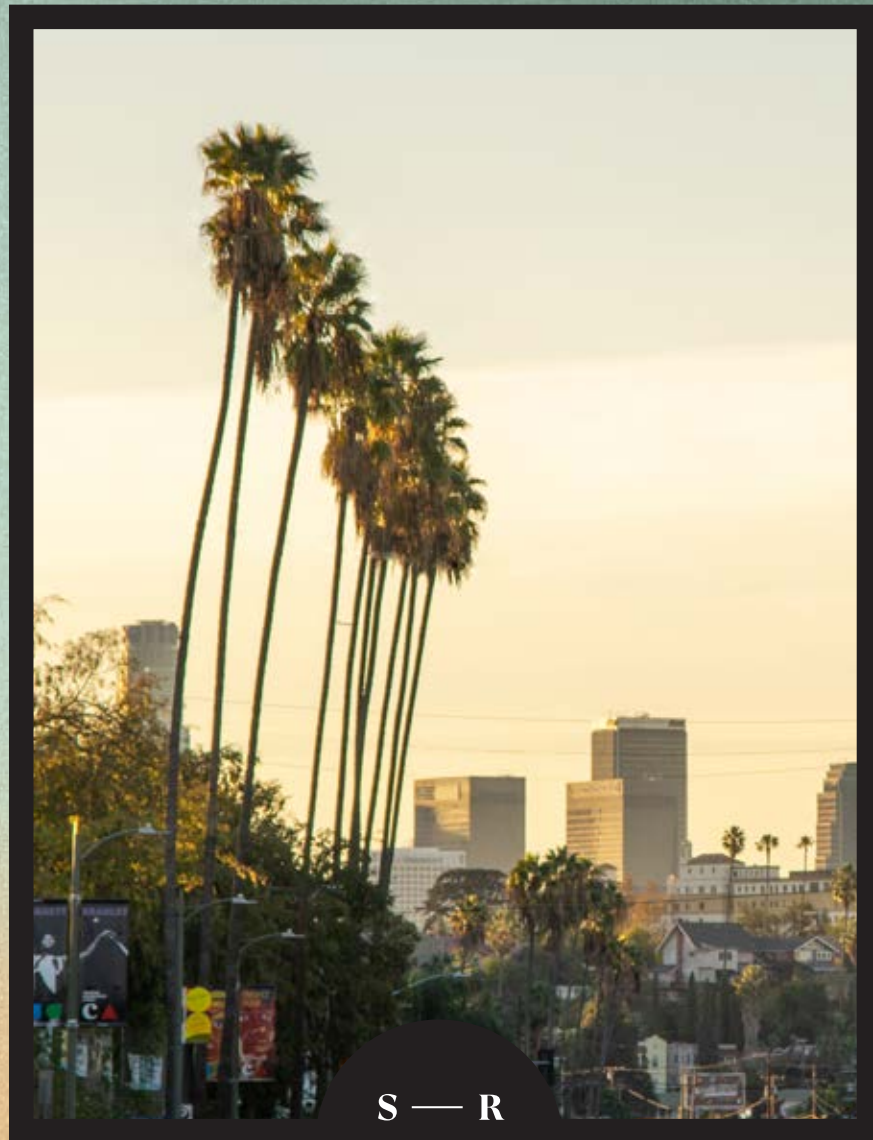


Sunset

Silver Lake



Los Angeles

Row

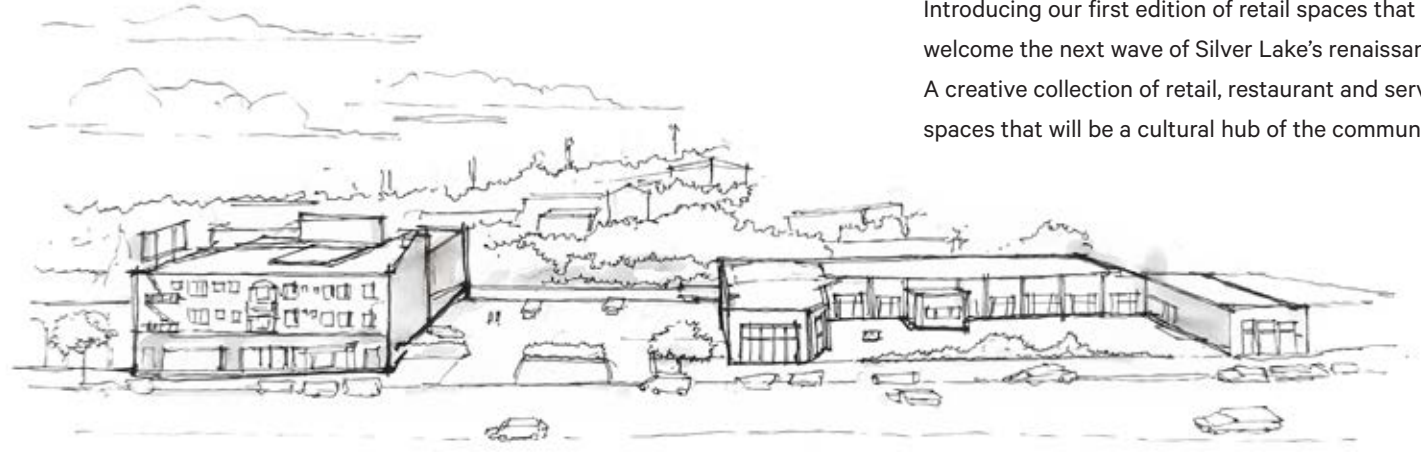
3210 – 3300 Sunset Blvd

19,000 sq. ft. of Retail and Restaurant

Now Leasing

Sunset Row honors the past while creating new spaces for the future.

A canvas for creativity and community.



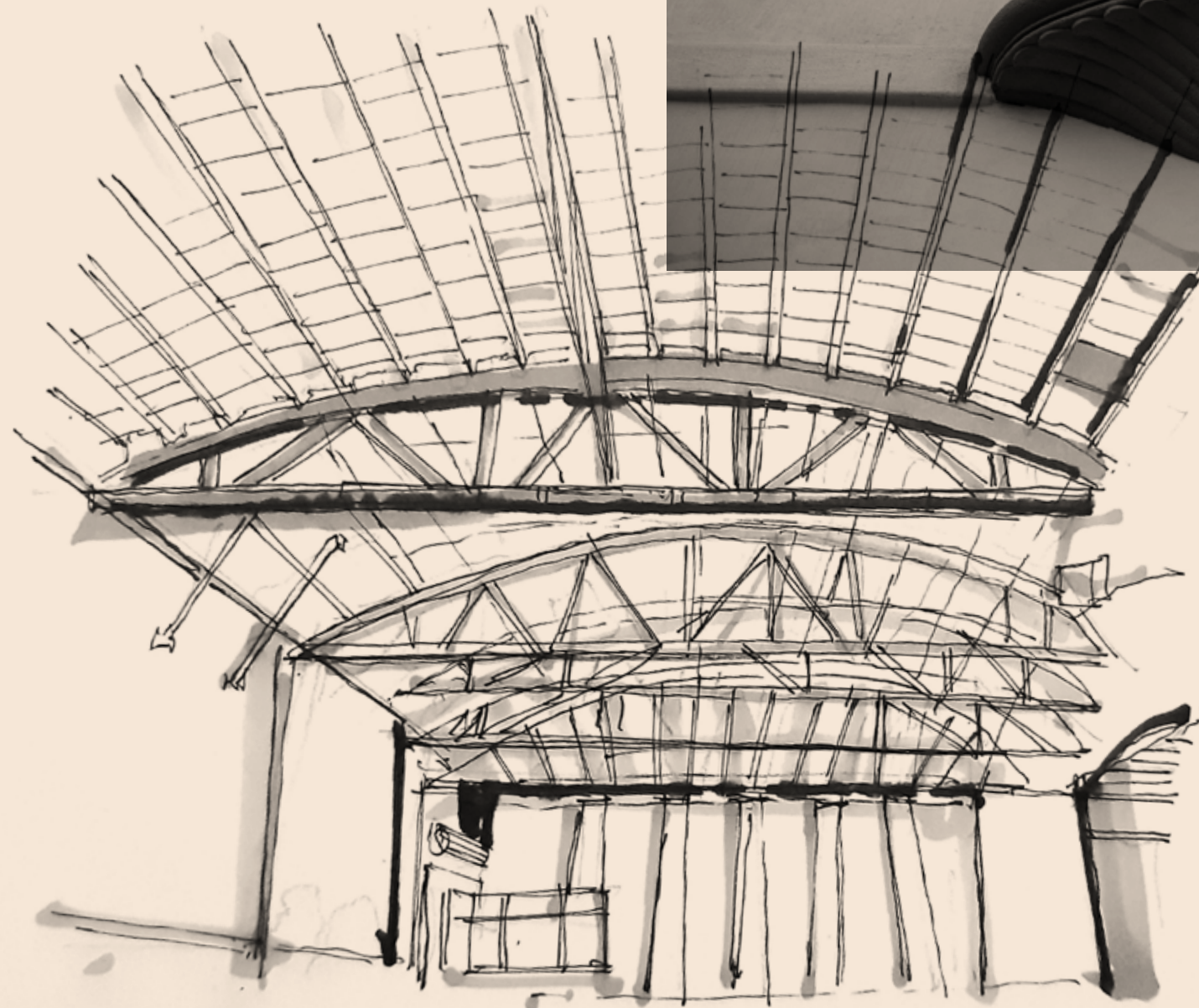
Introducing our first edition of retail spaces that will welcome the next wave of Silver Lake's renaissance. A creative collection of retail, restaurant and service spaces that will be a cultural hub of the community.



A restored architectural gem within Silver Lake.



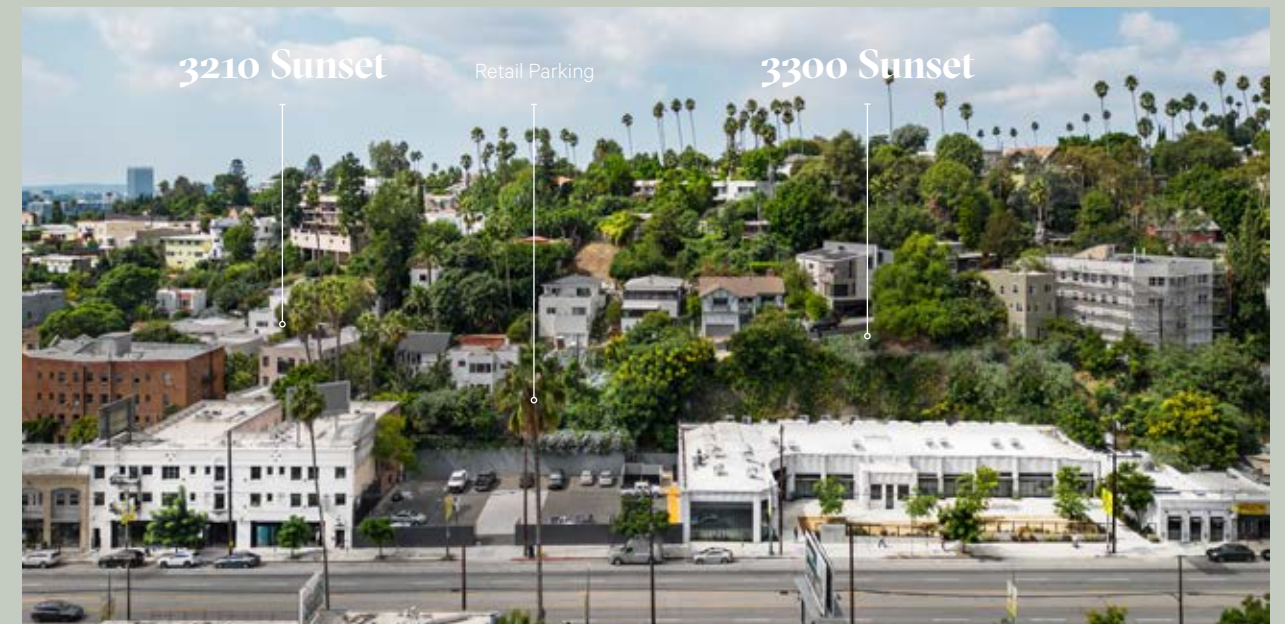
A former 1930s auto body shop, re-imagined into an intimate retail and restaurant experience.





The epicenter
of culture.

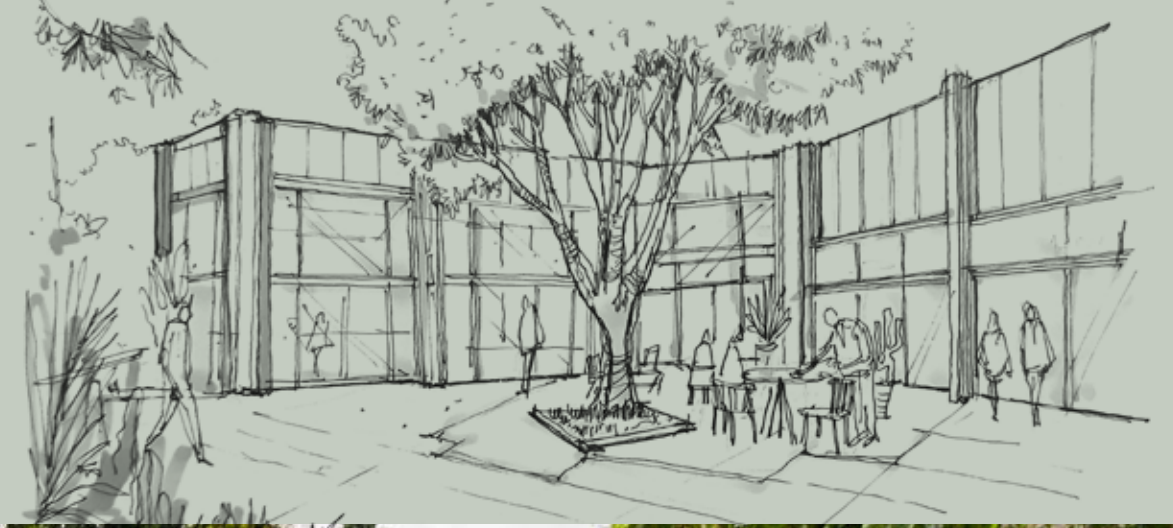
Beneath the foothills of the
architecturally significant
homes and natural landscape
of Silver Lake, Sunset Row
is the heart of the shopping
and dining experience on
Sunset Blvd.



3300 Sunset

Elevated looks. Historic character.

A fresh renovation of a 1930s auto body shop, 3300 Sunset features expansive bow truss ceilings and expertly restored original details. Its hallmark art deco design is enhanced with thoughtful architectural updates that create a sense of modern heritage. The beautiful structure of the building shines through their enhancements.





An oasis in the city.

The Courtyard

Blurring the line between public and private space, the lush 6,500 sq. ft. outdoor courtyard with social seating and natural gathering spaces creates an intimate and vibrant place for engagement, activation and events.

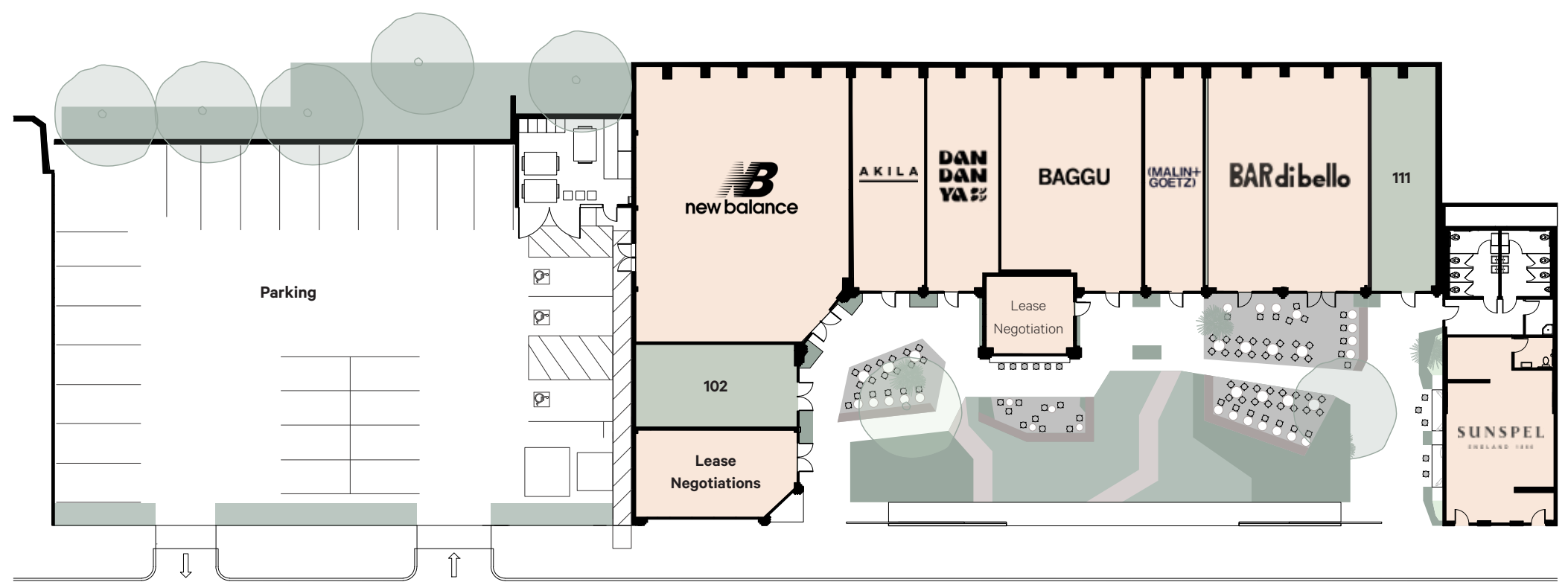
3300 Sunset

Features

- 12,624 sq. ft. of retail and restaurant spaces with patio potential
- 11 spaces from 383 to 2,978 sq. ft.
- Public and private outdoor gathering spaces
- Expansive bow truss ceilings



No. 101	No. 102	No. 103	No. 104	No. 105	No. 106	No. 107	No. 108	No. 109	No. 110	No. 111	No. 112
Retail / Rest. 779 sq. ft.	Retail / Rest. 645 sq. ft.	Retail 2,978 sq. ft.	Retail 864 sq. ft.	Restaurant 848 sq. ft.	Coffee/Bar 383 sq. ft.	Retail 1,547 sq. ft.	Retail 792 sq. ft.	Retail / Rest. 858 sq. ft.	Retail / Rest. 870 sq. ft.	Retail / Rest. 947 sq. ft.	Retail 1,083 sq. ft.



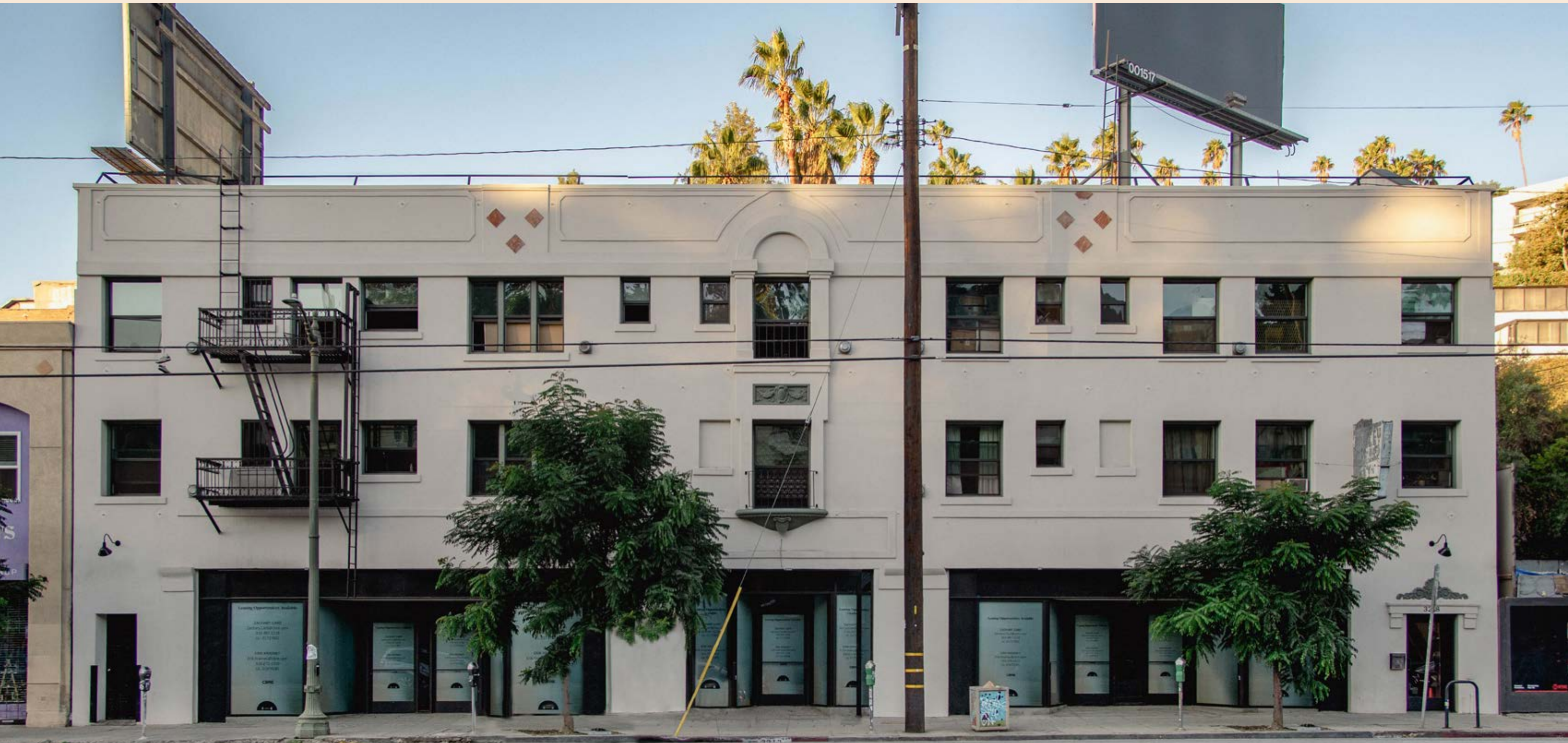
< Sunset Blvd >



3210 Sunset

Sunset Row's high street cosmopolitan.

A boutique collection of ground floor retail spaces, wrapped in the historical aesthetics of a beautiful Parisian-inspired deco building, offer incredible street presence with the convenience of adjacent parking. The restored features maintain the vintage charm while increasing functionality.



3210 Sunset



No. **01**
Retail
1,406 sq. ft.

No. **02**
Retail
1,037 sq. ft.

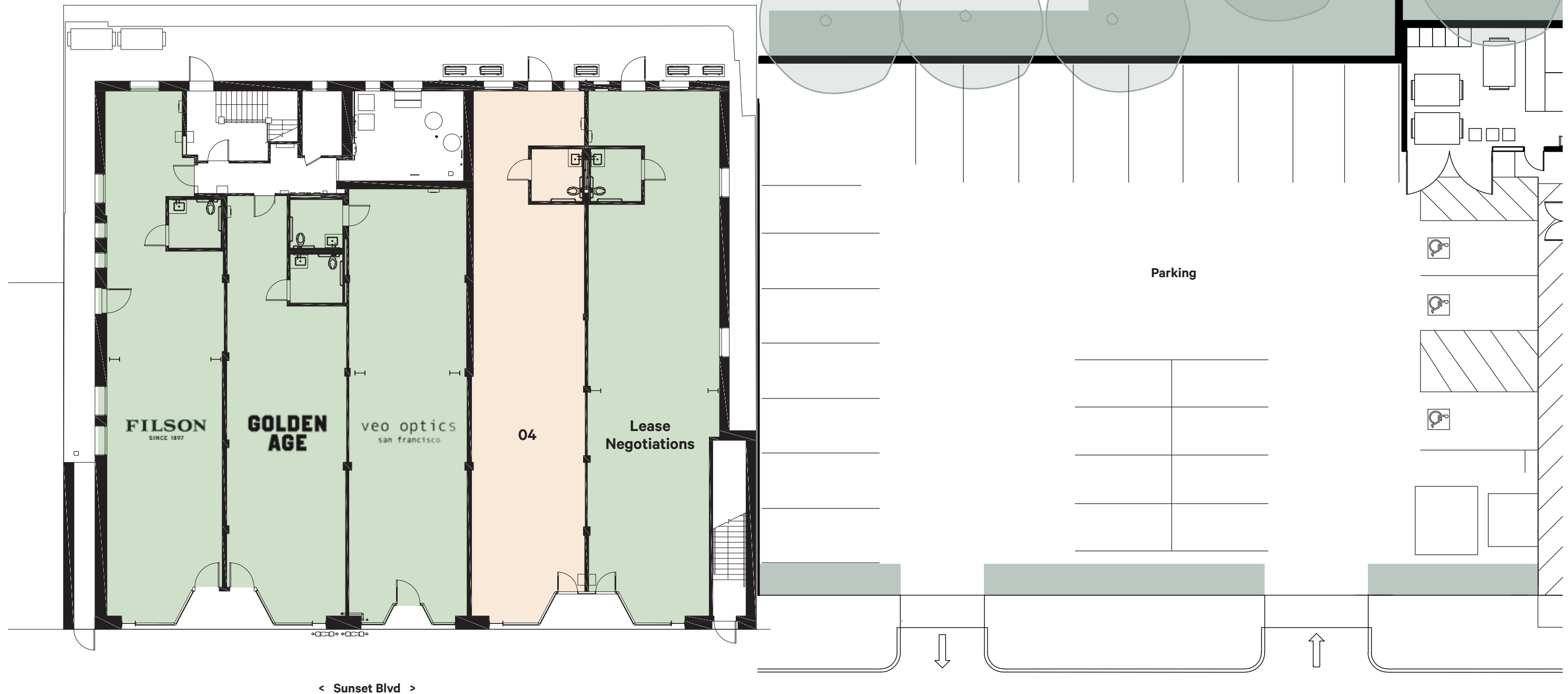
No. **03**
Retail
1,217 sq. ft.

No. **04**
Retail
1,352 sq. ft.

No. **05**
Bodega
1,554 sq. ft.
Type 20 ABC License

Features

- 6,568 sq. ft. of retail space
- 5 retail bays from 1,037 to 1,554 sq. ft.
- Beautifully renovated apartments above ground floor boutique retail



< Sunset Blvd >



 **Intelligentsia. Bowery Bungalow. Mohawk General Store.**
Salt & Straw. Millie's Café.  **Night+Market Song. Café Stella.**
Shake Shack. The Friend. Alimento. Blair's.  **Sweetgreen.**
Le Labo.  **Warby Parker. A.P.C. Aesop. Clare V. Dr. Martens.**
Omakase by Osen. Bar Moruno. All Day Baby.  **Alfred Coffee.**
Osen Izakaya. Erewhon.  **Maison Kitsuné. Silver Lake Ramen.**
Wood Pizza. La Colombe. Playita. Wildfang.  **Mashti Malone.**
Dayglow. Parachute Home. Moon Juice. Van Leeuwen. Tartine.
Byredo.  **De Buena Planta. Tenants of The Trees. Undeclared.**
Buck Mason.  **The Win-Dow. Heyday. Botanica. Bacari.**
 **Silver Lake Farmers Market. Café Tropical.**  **Pine & Crane.**

Sunset — Row

3210 - 3300 Sunset Blvd.,
Silver Lake, CA 90026

www.sunsetrow.com

Represented by

CBRE

Zachary Card

310-497-5218

zachary.card@cbre.com

Lic. 01717802

Erik Krasney

323-270-1920

erik.krasney@cbre.com

Lic. 01970585

Ryan Gurman

310-650-7545

ryan.gurman@cbre.com

Lic. 01972081

Developed by

RYDA