

For Sale | Flex office/warehouse

NEW PRICE **CBRE**

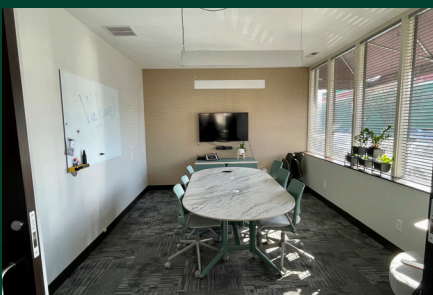
601 SE Clay Street

Portland, OR 97214



About the property

601 SE Clay is a 4,900 SF single story warehouse currently built out as a showroom office space. Beautifully appointed open work-space design with abundant natural light, conference room and large private office with a fireplace, kitchen and two ADA restrooms. The warehouse is clean with a 10-foot clear height clear span room serviced by a single grade level roll up door and two Reznor forced air gas heaters.

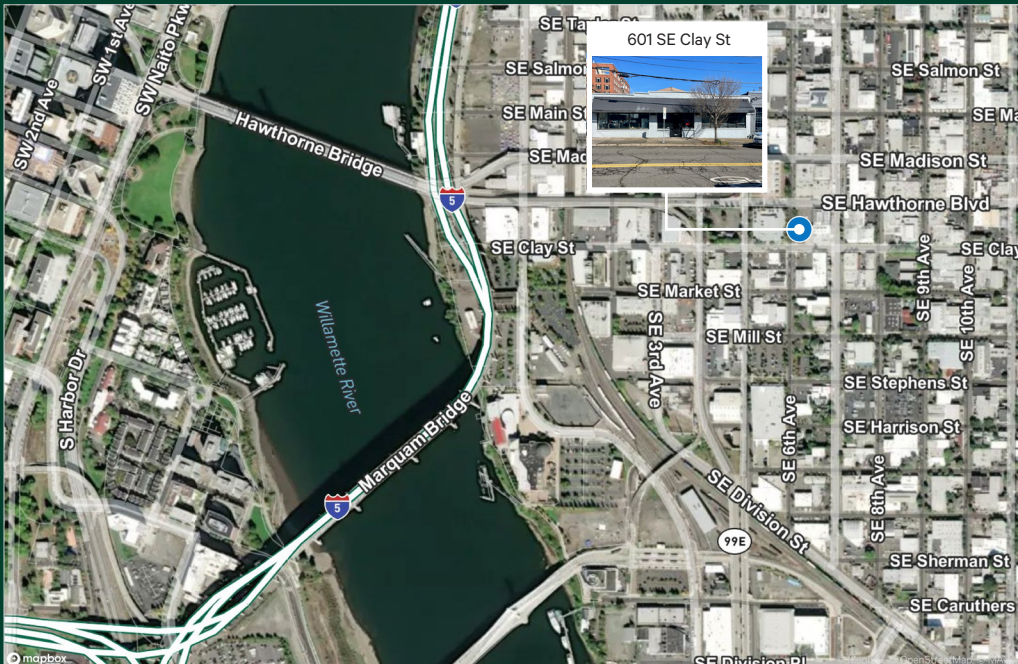
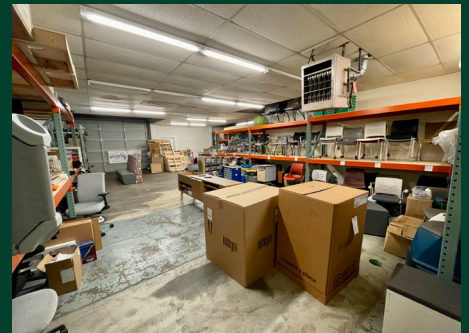


601 SE Clay St | Portland, OR 97214

NEW PRICE For Sale

Property Highlights

- + Year built: 1920
- + Building Size: 4,900 SF
- + Office: ~ 2,700 SF
- + Warehouse: ~ 2,200 SF
- + Lot size: 0.11 Acres
- + 2023 Property Taxes: \$8,947.55
- + Amenities: Currently built out as showroom/office with warehouse, restrooms and kitchenette.
- + Zoning: IG1
- + Walking distance to restaurants, shopping and public transit
- + Sale Price: **\$1,200,000.00**



Contact Us

Eleanor Aschoff

Senior Associate

+1 503 221 4868

eleanor.aschoff@cbre.com

© 2025 CBRE, Inc. All rights reserved. This information has been obtained from sources believed reliable, but has not been verified for accuracy or completeness. You should conduct a careful, independent investigation of the property and verify all information. Any reliance on this information is solely at your own risk. CBRE and the CBRE logo are service marks of CBRE, Inc. All other marks displayed on this document are the property of their respective owners, and the use of such logos does not imply any affiliation with or endorsement of CBRE. Photos herein are the property of their respective owners. Use of these images without the express written consent of the owner is prohibited.