

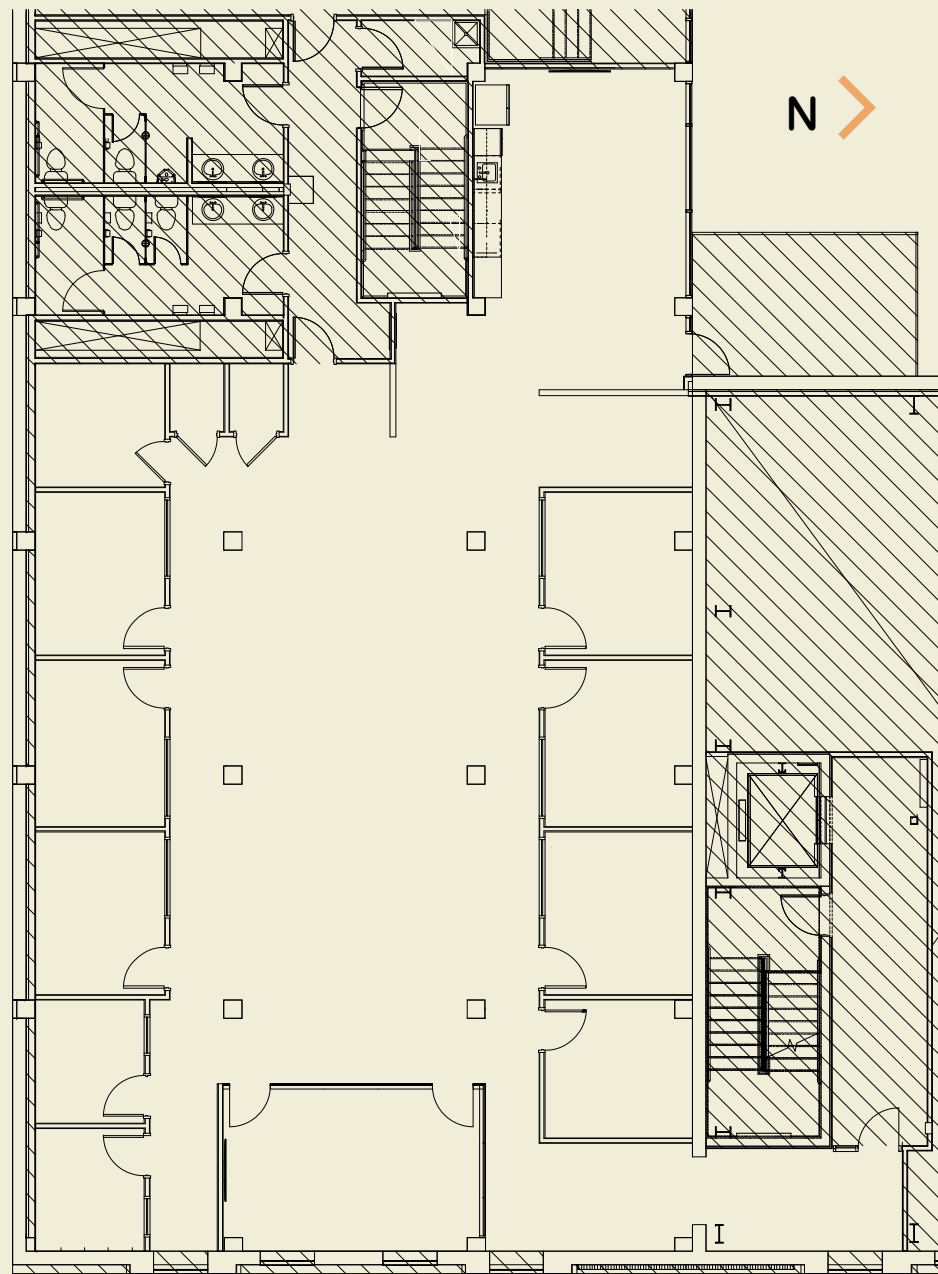
+ 1023 !
santa fe
drive+

DENVER, CO 80204

NEWMARK



SUITE 2B 4,200 Square Feet

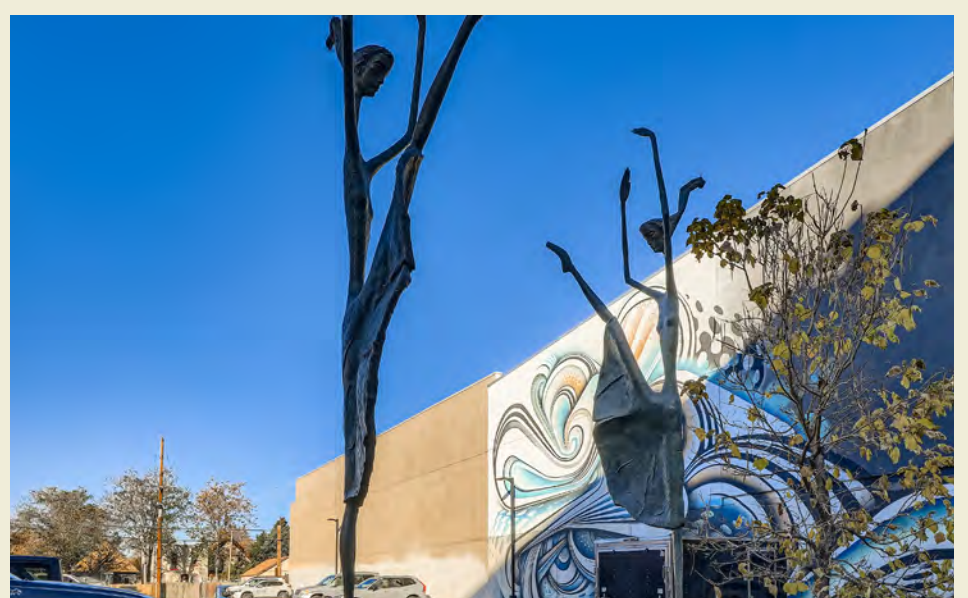
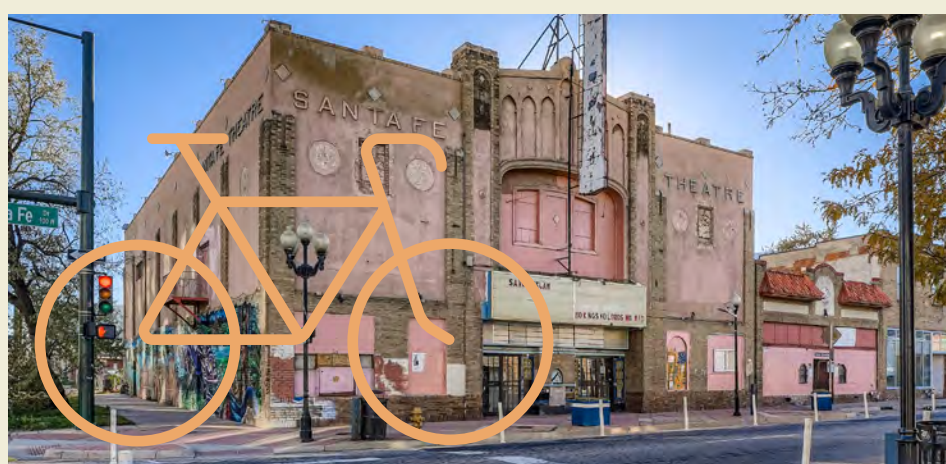


NOW LEASING

Office space in the restored Amick Building, a historic warehouse originally built for the Amick Transfer and Moving Company (founded 1896). A late-2010s restoration reinforced the structure with steel while preserving the original brick facade and introduced a new north curtain wall and raised roof for enhanced light and volume. Contemporary interiors combine character and modern performance, offering efficient layouts, natural light, and upgraded systems. Secure a distinctive address on Santa Fe Drive — contact us to schedule a tour.



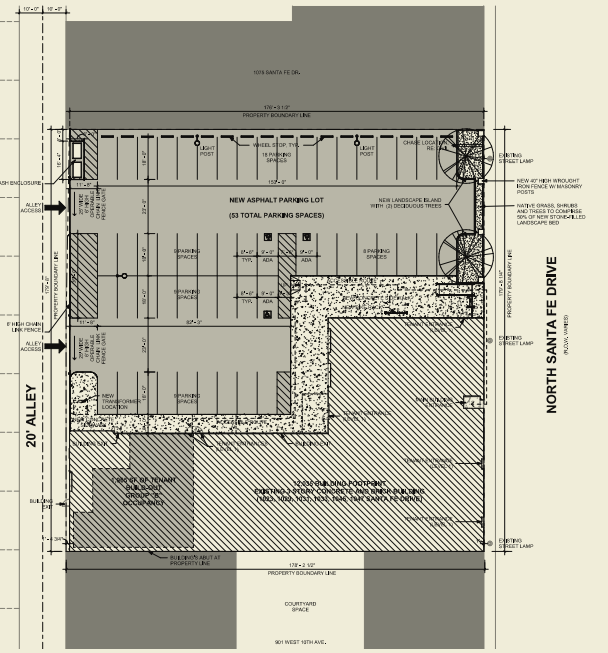
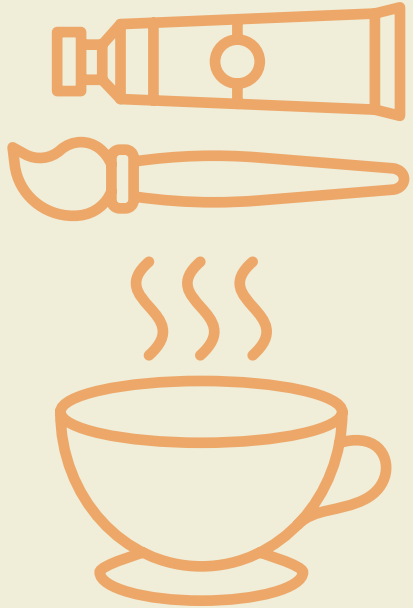
NEIGHBORHOOD CULTURE





HIGHLIGHTS

- 2025 NNN Expenses \$11.06/RSF
- Parking Ratio 1.8:1,000 (53 Spaces)
- Local Ownership
- Off-Street Parking Included In Rent
- Exposure to Over 13,101 VPD
- On Santa Fe



WHITNEY HAKE
Senior Managing Director
303-260-4202
Whitney.Hake@nmrk.com

GRACE LESSARD
Associate Director
303-260-4210
Grace.Lessard@nmrk.com