

COMMERCIAL LOT  
Mascoutah, Illinois 62258

**Brightly Senior Living**

**Future Dollar General Site**

**1.04 Acre, 180' Frontage**

PR. BUILDING  
56,153.7 S.F.  
FF=435.41

LOT 2  
ZONING R-1  
100' x 100' x 100' x 100'

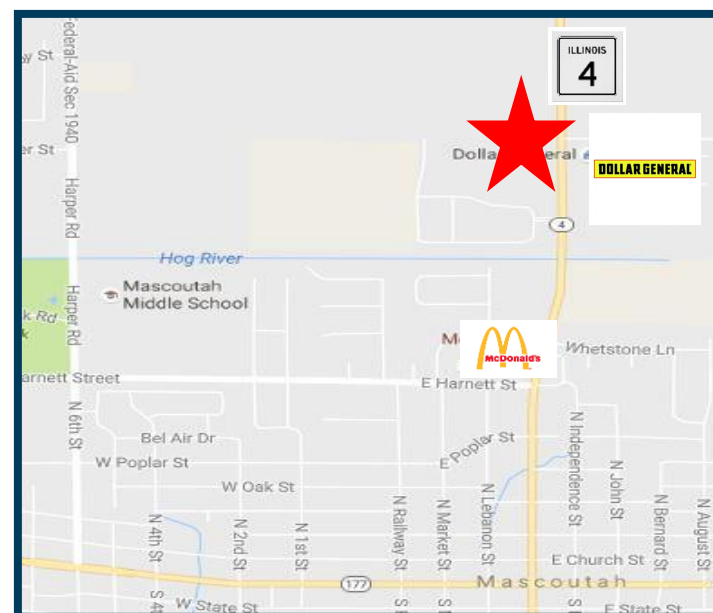
LOT 3  
ZONING R-1  
100' x 100' x 100' x 100'

Entrance

## ROUTE 4

- 1.04 Acre Level Lot, Zoned Commercial
- All utilities available
- Located near Dollar General, McDonalds, & Casey's
- Situated in front of Brightly Senior Living
- Interstate 64 less than 3 miles North
- Great visibility
- **180' Frontage, 1.04 Acres, \$235,572 (\$5.20 psf)**
- **Broker has ownership interest**

CHOOSEKWG.COM



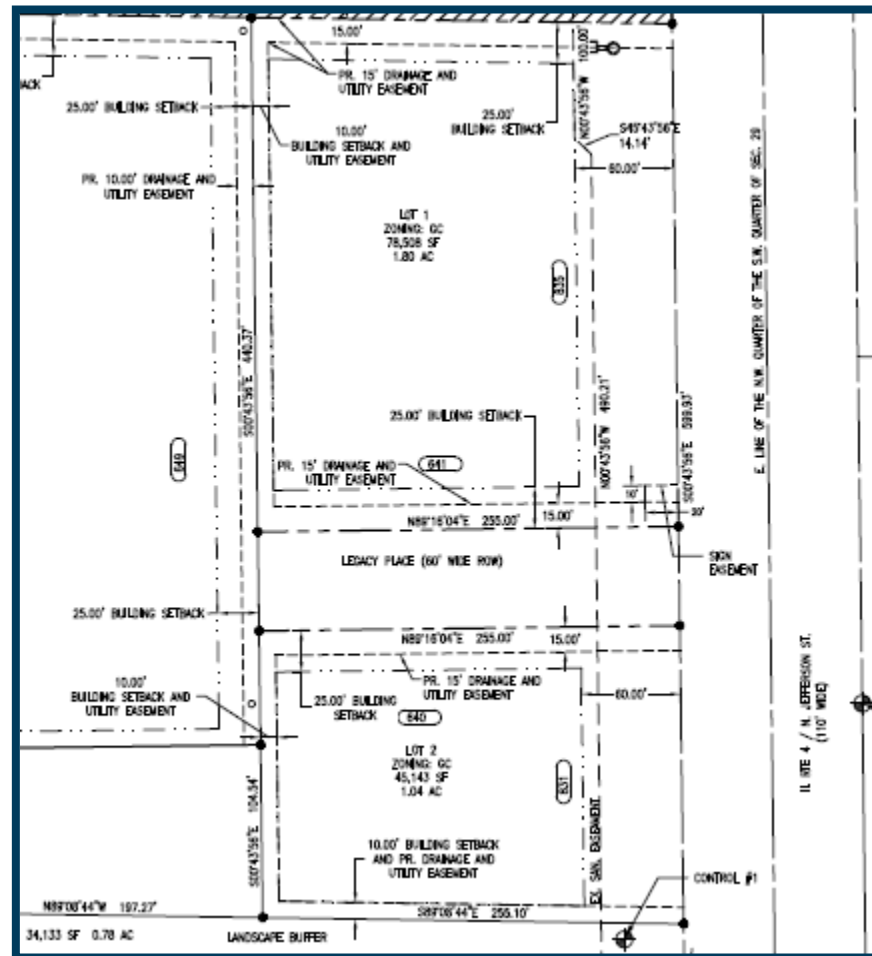
*Information herein is not warranted and subject to change without notice. We assume no liability for errors on items included in quoted price. Broker makes no representation as to the environmental condition of property and recommends Purchaser's / Tenant's independent investigation.*

# SITE PLAN



## COMMERCIAL LOT Mascoutah, Illinois 62258

■ CHOOSEKWG.COM ■ CHOOSEKWG.COM ■ CHOOSEKWG.COM ■



## 1.04 +/- Acres