

# 630

## LENOX AVENUE

HARLEM, NYC

Between 141<sup>st</sup> & 142<sup>nd</sup> Streets

RETAIL FOR LEASE

### APPROXIMATE SIZE

2,200 SF

### ASKING RENT

\$6,500/Month

### POSSESSION

Immediate

### TERM

5-15 Years

### COMMENTS

- At the base of Savoy Park, a 1,800-unit residential building in Harlem
- Entrances from both Lenox Avenue and building lobby
- Great for office and medical uses
- Steps from the 2,3 trains

### NEIGHBORS

Key Food • Subway • Metro by T-Mobile  
• McDonald's • Rent-A-Center • Boost  
Mobile • Harlem Nights • Ponty Bistro

### TRANSPORTATION

2 3 4 5



JAMES FAMULARO  
President

DANE HARLOWE  
Director  
212.468.5966  
dharlowe@meridiancapital.com



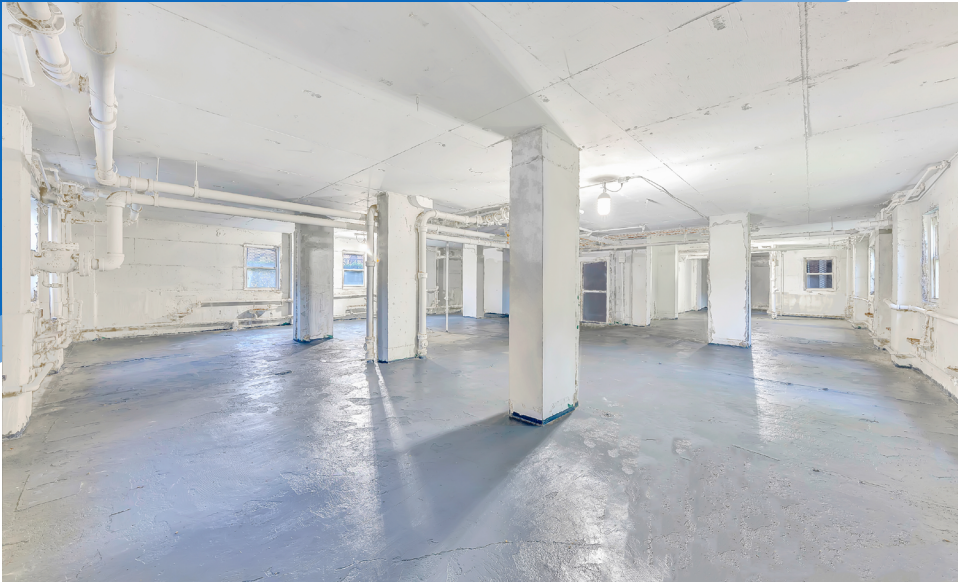
All information supplied is from sources deemed reliable and is furnished subject to errors, omissions, modifications, removal of the listing from sale or lease, and to any listing conditions, including the rates and manner of payment of commissions for particular offerings imposed by Meridian Capital Group. This information may include estimates and projections prepared by Meridian Capital Group with respect to future events, and these future events may or may not actually occur. Such estimates and projections reflect various assumptions concerning anticipated results. While Meridian Capital Group believes these assumptions are reasonable, there can be no assurance that any of these estimates and projections will be correct. Therefore, actual results may vary materially from these estimates and projections. Any square footage dimensions set forth are approximate.



## 630 LENOX AVENUE

HARLEM, NYC | Between 141<sup>st</sup> and 142<sup>nd</sup> Streets

RETAIL FOR LEASE



INTERIOR

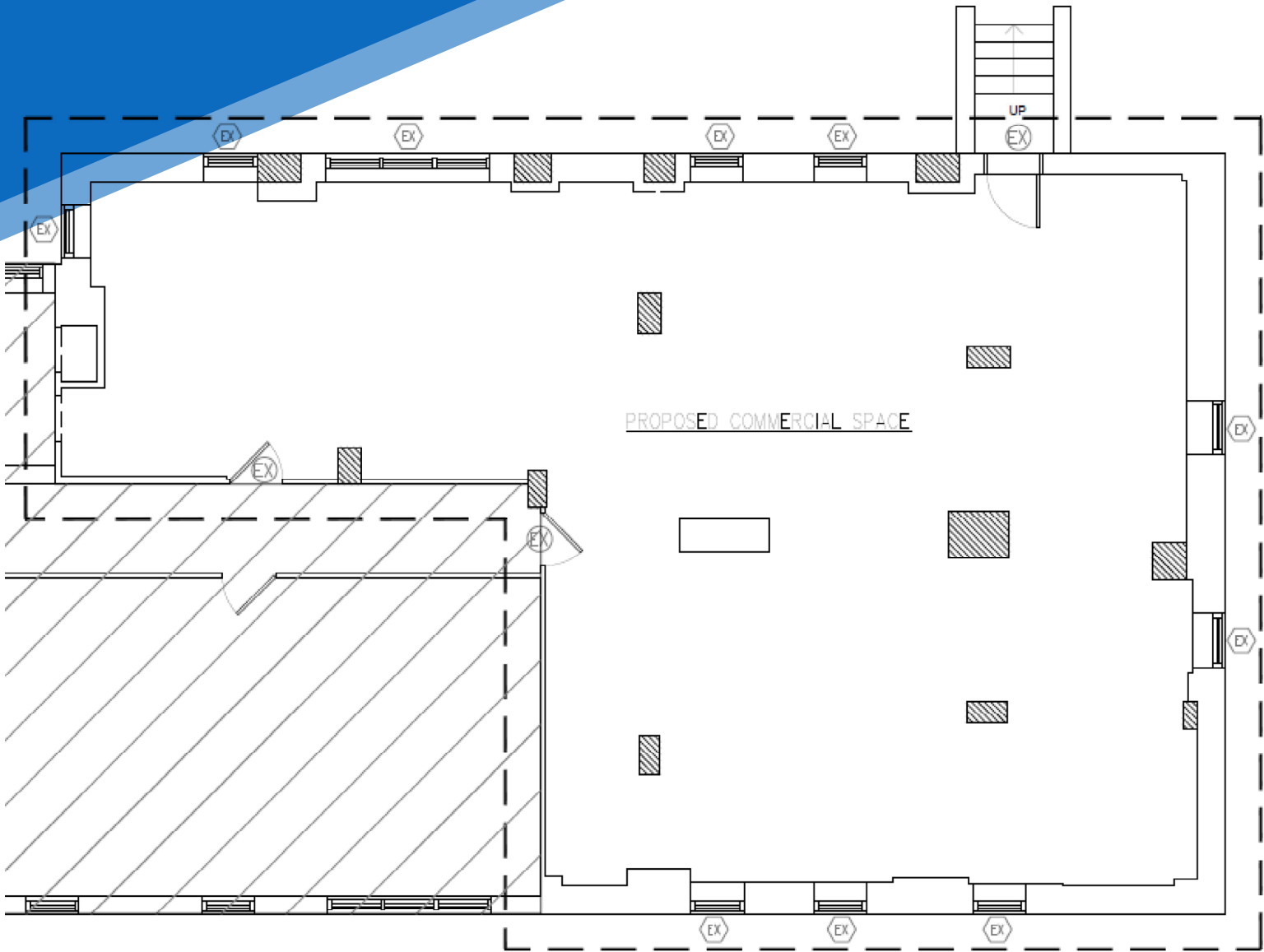
JAMES FAMULARO  
President

DANE HARLOWE  
Director  
212.468.5966  
dharlowe@meridiancapital.com



All information supplied is from sources deemed reliable and is furnished subject to errors, omissions, modifications, removal of the listing from sale or lease, and to any listing conditions, including the rates and manner of payment of commissions for particular offerings imposed by Meridian Capital Group. This information may include estimates and projections prepared by Meridian Capital Group with respect to future events, and these future events may or may not actually occur. Such estimates and projections reflect various assumptions concerning anticipated results. While Meridian Capital Group believes these assumptions are reasonable, there can be no assurance that any of these estimates and projections will be correct. Therefore, actual results may vary materially from these estimates and projections. Any square footage dimensions set forth are approximate.

FLOOR PLAN



JAMES FAMULARO  
President

DANE HARLOWE  
Director  
212.468.5966  
dharlowe@meridiancapital.com



All information supplied is from sources deemed reliable and is furnished subject to errors, omissions, modifications, removal of the listing from sale or lease, and to any listing conditions, including the rates and manner of payment of commissions for particular offerings imposed by Meridian Capital Group. This information may include estimates and projections prepared by Meridian Capital Group with respect to future events, and these future events may or may not actually occur. Such estimates and projections reflect various assumptions concerning anticipated results. While Meridian Capital Group believes these assumptions are reasonable, there can be no assurance that any of these estimates and projections will be correct. Therefore, actual results may vary materially from these estimates and projections. Any square footage dimensions set forth are approximate.



## 630 LENOX AVENUE

HARLEM, NYC | Between 141<sup>st</sup> and 142<sup>nd</sup> Streets

RETAIL FOR LEASE

NEIGHBORS

W 142ND STREET

**Empire Chinese Restaurant**



**citi bike**  
provided by **lyft**

W 141ST STREET



W 140TH STREET



**citi bike**  
provided by **lyft**

MALCOLM X BLVD



**citi bike**  
provided by **lyft**

W 139TH STREET



**HARLEM NIGHTS**



**metro**  
by T-Mobile

**Wonderschool**



**JAMES FAMULARO**  
President

**DANE HARLOWE**  
Director  
212.468.5966  
dharlowe@meridiancapital.com

**MERIDIAN**  
RETAIL LEASING

All information supplied is from sources deemed reliable and is furnished subject to errors, omissions, modifications, removal of the listing from sale or lease, and to any listing conditions, including the rates and manner of payment of commissions for particular offerings imposed by Meridian Capital Group. This information may include estimates and projections prepared by Meridian Capital Group with respect to future events, and these future events may or may not actually occur. Such estimates and projections reflect various assumptions concerning anticipated results. While Meridian Capital Group believes these assumptions are reasonable, there can be no assurance that any of these estimates and projections will be correct. Therefore, actual results may vary materially from these estimates and projections. Any square footage dimensions set forth are approximate.