

Tulsa Industrial For Sale

10012 E 46th PL
Tulsa, OK 74146

Andrew Leach
Senior Associate
918.388.6148
aleach@mcgrawcp.com

Kyle Quinn
Sales Associate
918.550.4455
kquinn@mcgrawcp.com

MCP MCGRAW
COMMERCIAL
PROPERTIES



Property Summary



Property Description

Excellent opportunity for a business requiring a combination of office and warehouse space. Approximately 40% of the building has been finished as high-quality office space, with the remaining 60% configured for warehouse use. The property is fully fenced for added security and offers ample space for trailers, parking, or outdoor storage.

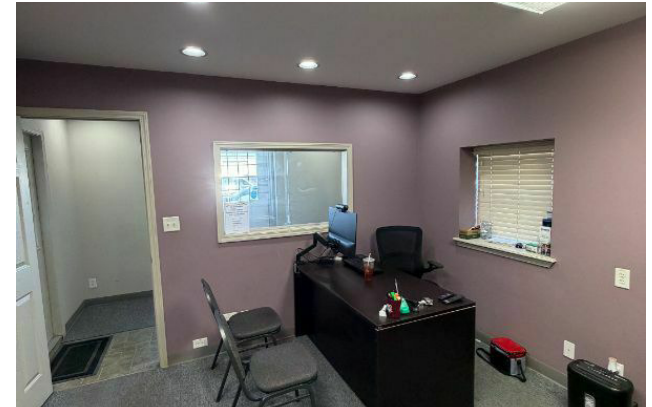
Property Highlights

- Turn Key
- Fenced Lot
- Central Location

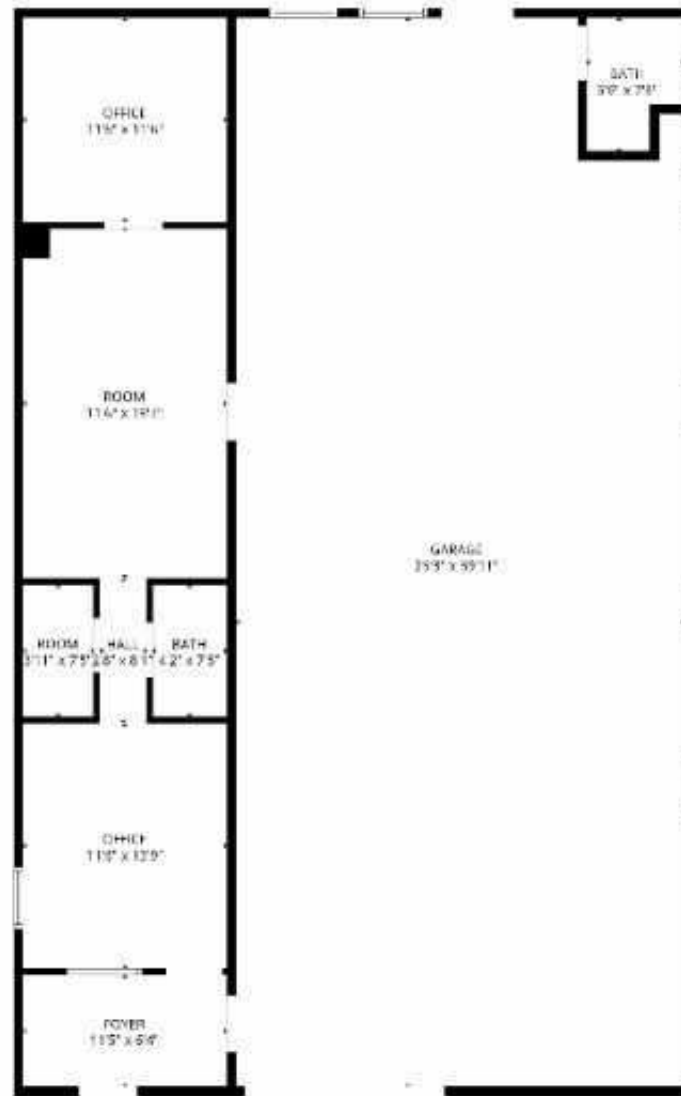
Offering Summary

Sale Price:	\$259,000
Lot Size:	0.16 Acres
Building Size:	2,480 SF

Additional Photos

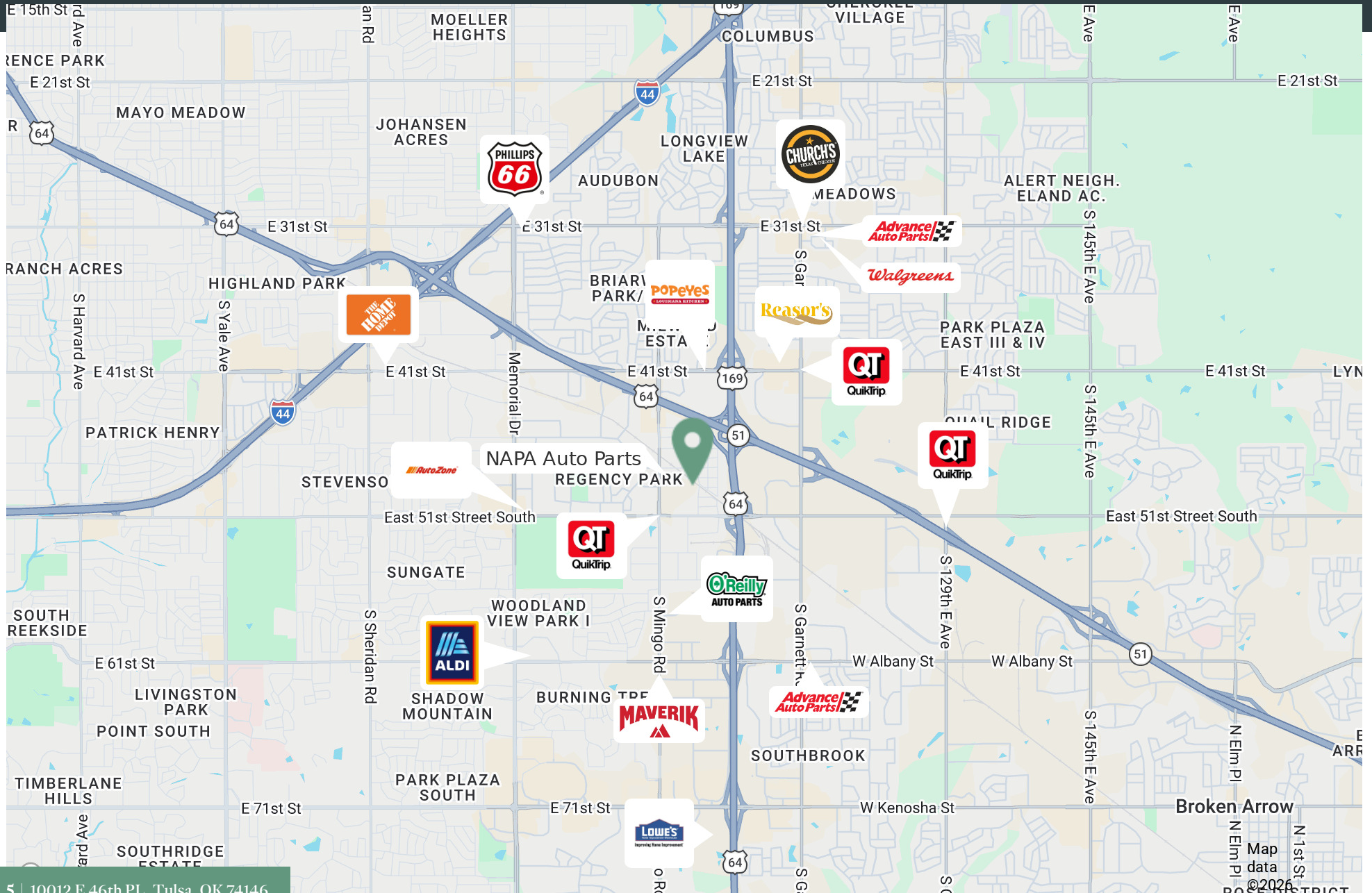


Floor Plan



FLOOR PLAN CANNOT BE USED AS A BASIS FOR CONSTRUCTION. DIMENSIONS SHOWN ARE APPROXIMATE AND NOT GUARANTEED.

Location Map

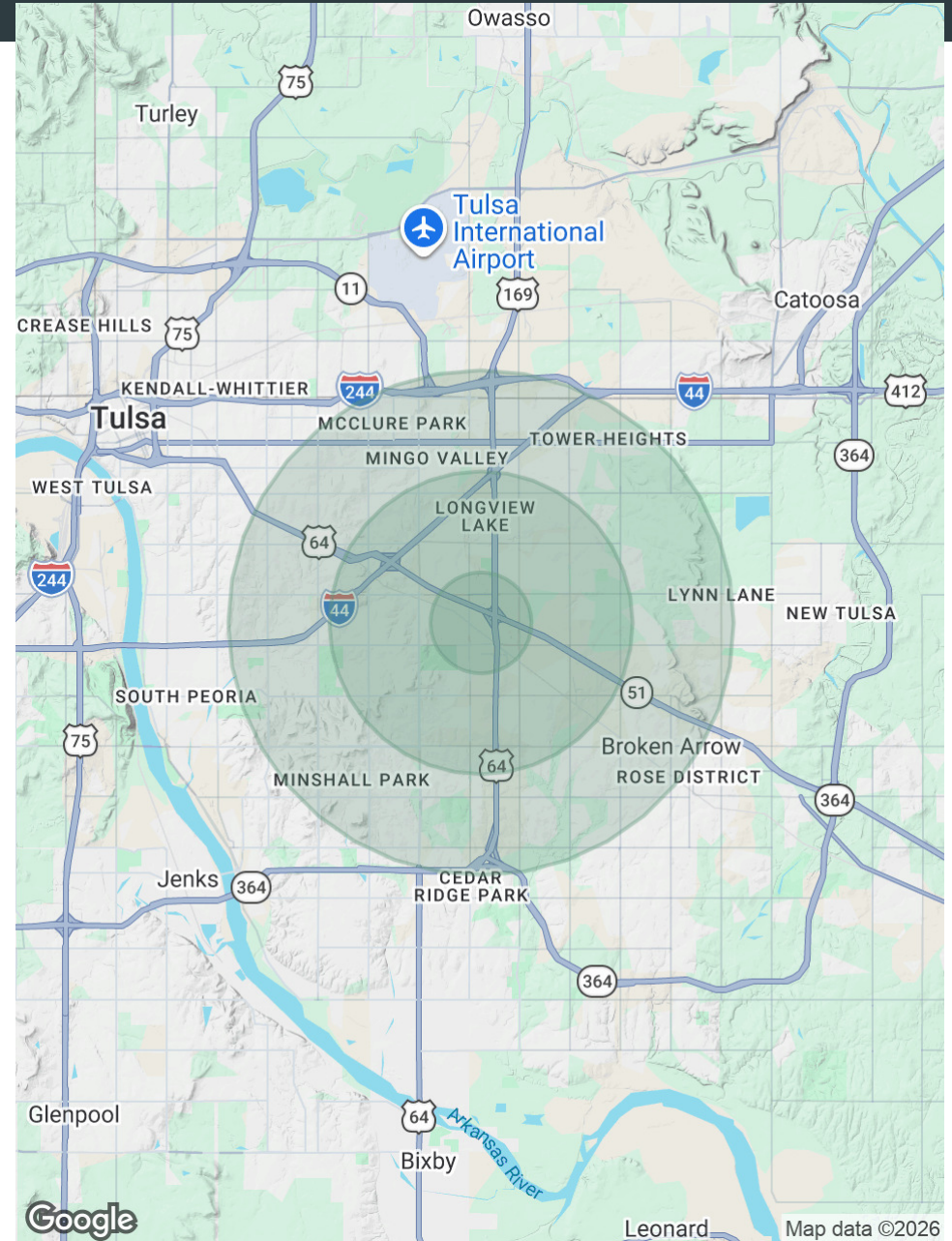


Demographics Map & Report

Population	1 Mile	3 Miles	5 Miles
Total Population	7,723	97,732	234,906
Average Age	35	37	39
Average Age (Male)	34	36	38
Average Age (Female)	36	39	40

Households & Income	1 Mile	3 Miles	5 Miles
Total Households	3,337	39,316	96,893
# of Persons per HH	2.3	2.5	2.4
Average HH Income	\$47,411	\$70,019	\$84,450
Average House Value	\$129,921	\$193,145	\$229,304

Demographics data derived from AlphaMap



Contact

Andrew Leach

Senior Associate
918.388.6148
aleach@mcgrawcp.com

Kyle Quinn

Sales Associate
918.550.4455 x8182
kquinn@mcgrawcp.com

MCP MCGRAW
COMMERCIAL
PROPERTIES

MCP - McGraw Commercial Properties
4105 S. Rockford Ave.
Tulsa, OK 74105
mcgrawcp.com

DISCLAIMER: This information has been obtained from sources deemed reliable. MCP has not verified this data for accuracy and assumes no responsibility for errors or omissions in any content. You and / or your advisors should conduct a thorough, independent investigation of the property to confirm all information and the suitability of the property for your needs.